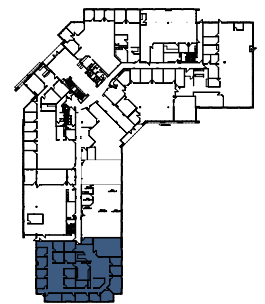
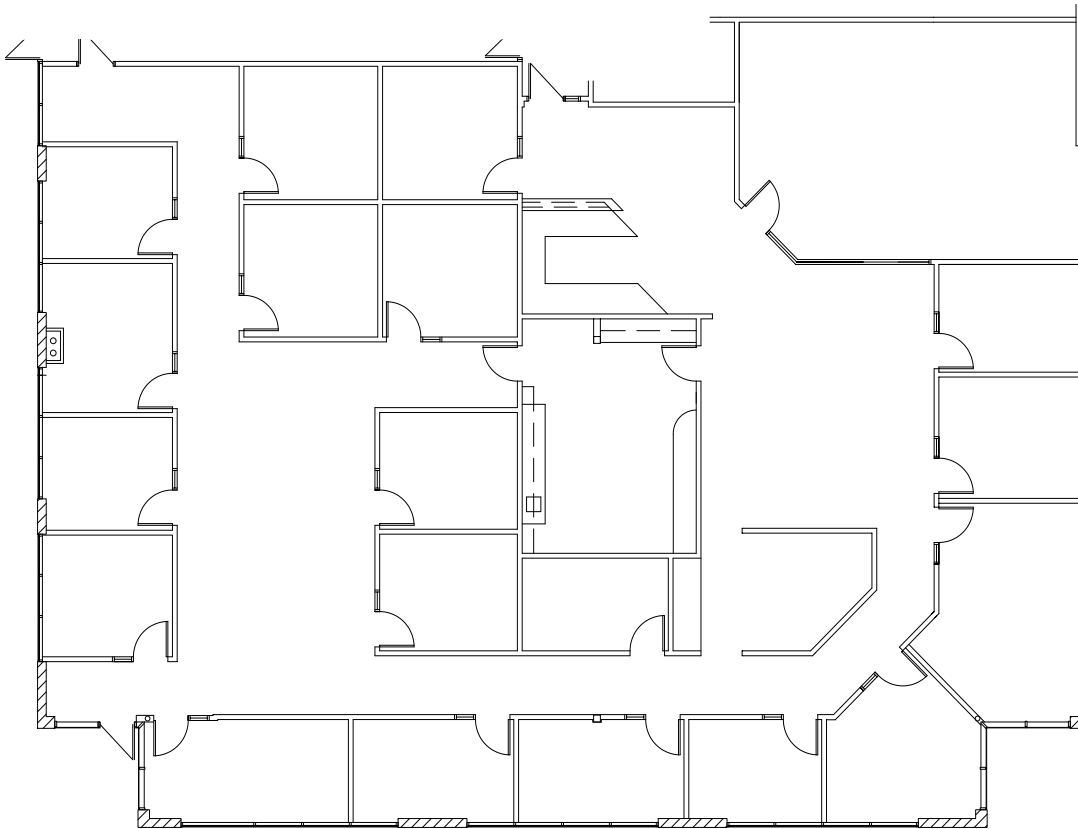




FLOORPLAN

1711 WEST GREENTREE DR. TEMPE, ARIZONA



SUITE **AVAILABLE** **DATE AVAILABLE**
Suite 117 **±6,514 RSF** **2/1/27**

Patrick Schrimsher
Director
+1 602 468 8529
patrick.schrimsher@cushwake.com

Ryan Lambeth
Associate
+1 602 468 8570
ryan.lambeth@cushwake.com



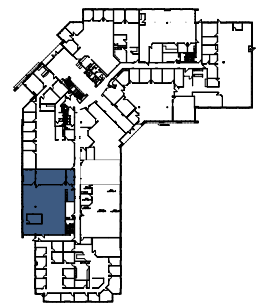
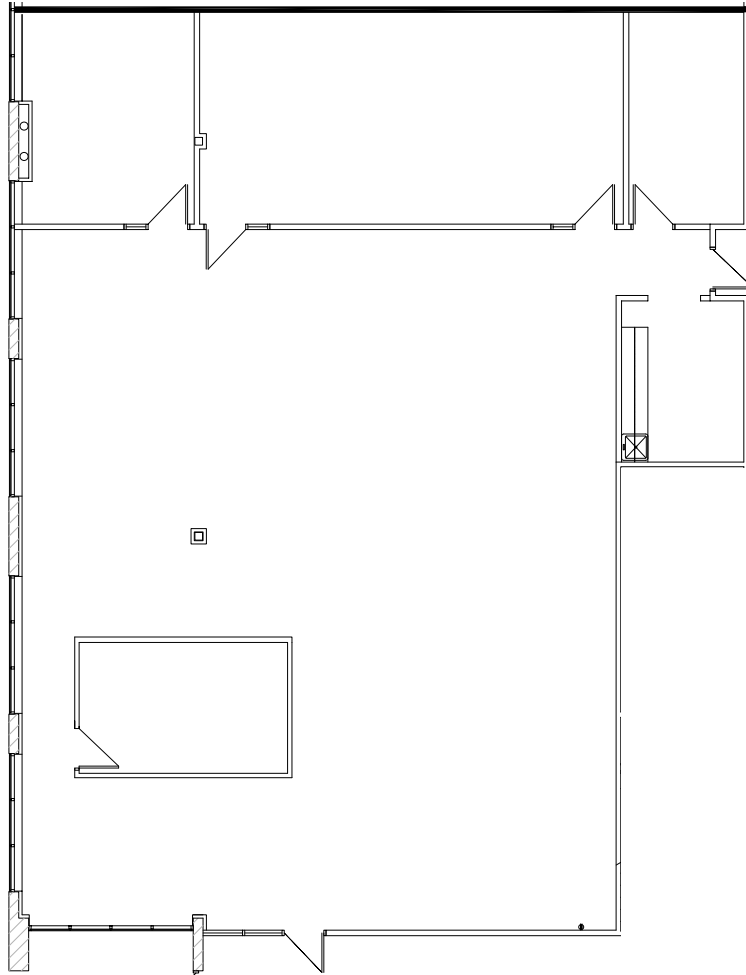
2555 E Camelback Rd, Suite 400, Phoenix, Arizona 85016 | + 602 954 9000 | www.cushmanwakefield.com

©2026 Cushman & Wakefield. All rights reserved. The information contained in this communication is strictly confidential. This information has been obtained from sources believed to be reliable but has not been verified. NO WARRANTY OR REPRESENTATION, EXPRESS OR IMPLIED, IS MADE AS TO THE CONDITION OF THE PROPERTY (OR PROPERTIES) REFERENCED HEREIN OR AS TO THE ACCURACY OR COMPLETENESS OF THE INFORMATION CONTAINED HEREIN, AND SAME IS SUBMITTED SUBJECT TO ERRORS, OMISSIONS, CHANGE OF PRICE, RENTAL OR OTHER CONDITIONS, WITHDRAWAL WITHOUT NOTICE, AND TO ANY SPECIAL LISTING CONDITIONS IMPOSED BY THE PROPERTY OWNER(S). ANY PROJECTIONS, OPINIONS OR ESTIMATES ARE SUBJECT TO UNCERTAINTY AND DO NOT SIGNIFY CURRENT OR FUTURE PROPERTY PERFORMANCE.



FLOORPLAN

1711 WEST GREENTREE DR. TEMPE, ARIZONA



SUITE AVAILABLE
Suite 123 ±3,959 RSF

Patrick Schrimsher

Director
+1 602 468 8529
patrick.schrimsher@cushwake.com

Ryan Lambeth

Associate
+1 602 468 8570
ryan.lambeth@cushwake.com



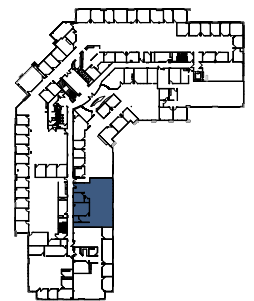
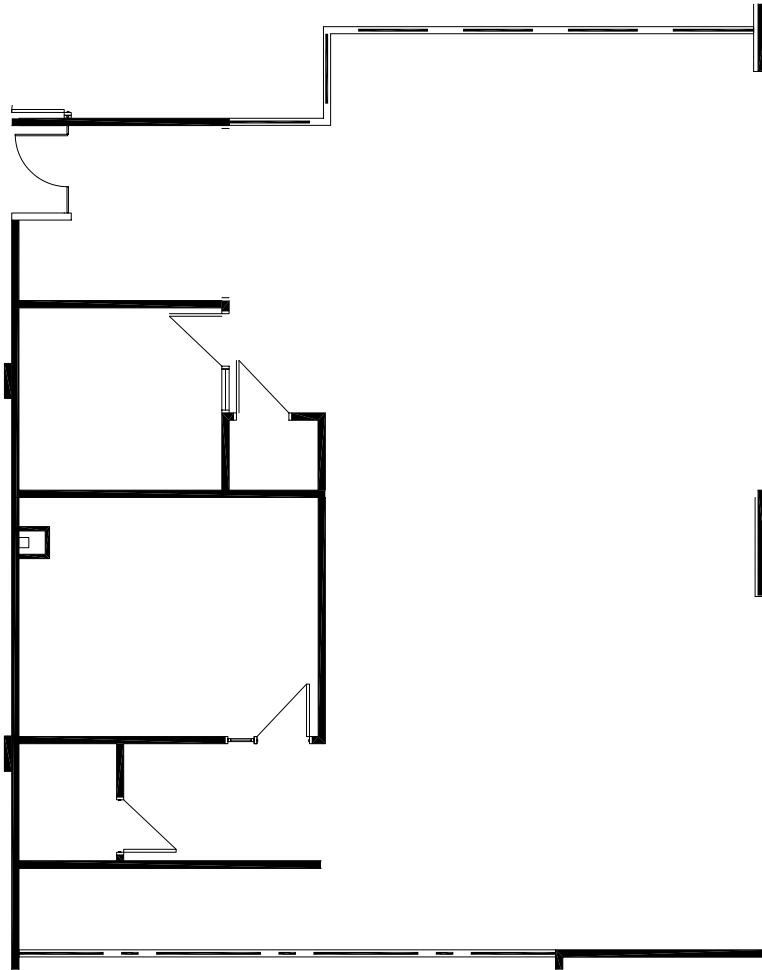
2555 E Camelback Rd, Suite 400, Phoenix, Arizona 85016 | + 602 954 9000 | www.cushmanwakefield.com

©2026 Cushman & Wakefield. All rights reserved. The information contained in this communication is strictly confidential. This information has been obtained from sources believed to be reliable but has not been verified. NO WARRANTY OR REPRESENTATION, EXPRESS OR IMPLIED, IS MADE AS TO THE CONDITION OF THE PROPERTY (OR PROPERTIES) REFERENCED HEREIN OR AS TO THE ACCURACY OR COMPLETENESS OF THE INFORMATION CONTAINED HEREIN, AND SAME IS SUBMITTED SUBJECT TO ERRORS, OMISSIONS, CHANGE OF PRICE, RENTAL OR OTHER CONDITIONS, WITHDRAWAL WITHOUT NOTICE, AND TO ANY SPECIAL LISTING CONDITIONS IMPOSED BY THE PROPERTY OWNER(S). ANY PROJECTIONS, OPINIONS OR ESTIMATES ARE SUBJECT TO UNCERTAINTY AND DO NOT SIGNIFY CURRENT OR FUTURE PROPERTY PERFORMANCE.



FLOORPLAN

1711 WEST GREENTREE DR. TEMPE, ARIZONA



SUITE AVAILABLE
Suite 216 ±2,480 RSF

Patrick Schrimsher

Director
+1 602 468 8529
patrick.schrimsher@cushwake.com

Ryan Lambeth

Associate
+1 602 468 8570
ryan.lambeth@cushwake.com



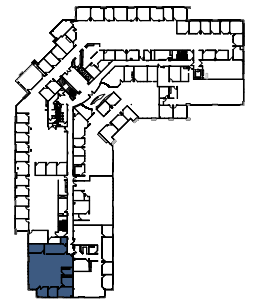
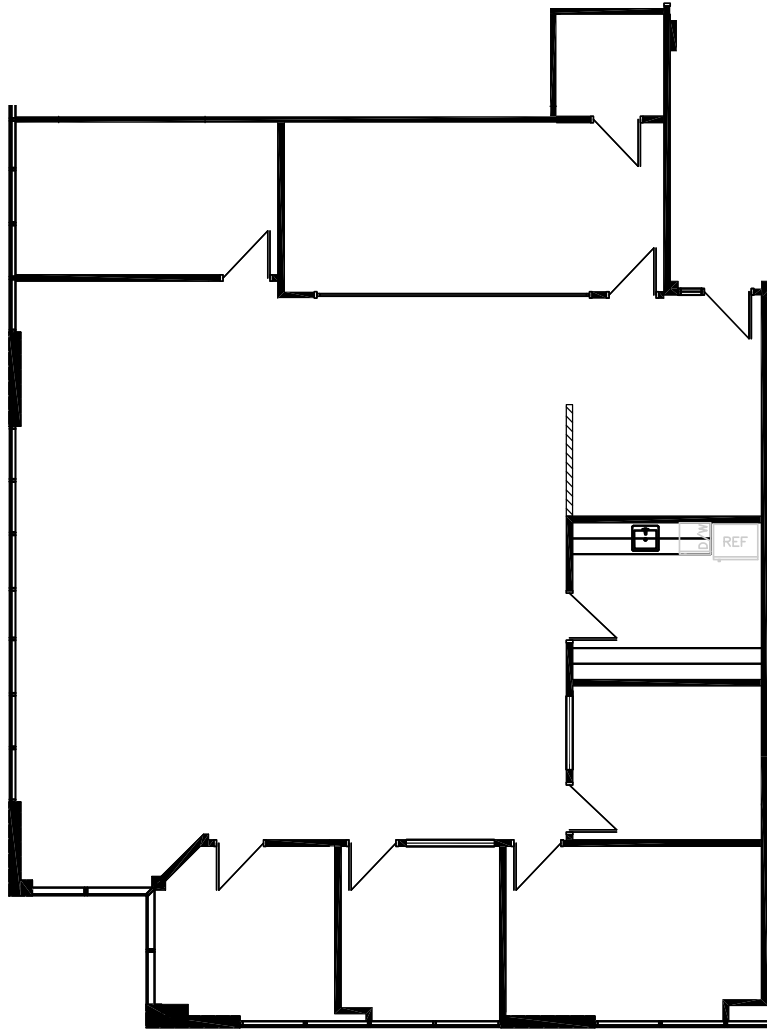
2555 E Camelback Rd, Suite 400, Phoenix, Arizona 85016 | + 602 954 9000 | www.cushmanwakefield.com

©2026 Cushman & Wakefield. All rights reserved. The information contained in this communication is strictly confidential. This information has been obtained from sources believed to be reliable but has not been verified. NO WARRANTY OR REPRESENTATION, EXPRESS OR IMPLIED, IS MADE AS TO THE CONDITION OF THE PROPERTY (OR PROPERTIES) REFERENCED HEREIN OR AS TO THE ACCURACY OR COMPLETENESS OF THE INFORMATION CONTAINED HEREIN, AND SAME IS SUBMITTED SUBJECT TO ERRORS, OMISSIONS, CHANGE OF PRICE, RENTAL OR OTHER CONDITIONS, WITHDRAWAL WITHOUT NOTICE, AND TO ANY SPECIAL LISTING CONDITIONS IMPOSED BY THE PROPERTY OWNER(S). ANY PROJECTIONS, OPINIONS OR ESTIMATES ARE SUBJECT TO UNCERTAINTY AND DO NOT SIGNIFY CURRENT OR FUTURE PROPERTY PERFORMANCE.



FLOORPLAN

1711 WEST GREENTREE DR. TEMPE, ARIZONA



SUITE AVAILABLE
Suite 221 ±3,036 RSF

Patrick Schrimsher

Director
+1 602 468 8529
patrick.schrimsher@cushwake.com

Ryan Lambeth

Associate
+1 602 468 8570
ryan.lambeth@cushwake.com



2555 E Camelback Rd, Suite 400, Phoenix, Arizona 85016 | + 602 954 9000 | www.cushmanwakefield.com

©2026 Cushman & Wakefield. All rights reserved. The information contained in this communication is strictly confidential. This information has been obtained from sources believed to be reliable but has not been verified. NO WARRANTY OR REPRESENTATION, EXPRESS OR IMPLIED, IS MADE AS TO THE CONDITION OF THE PROPERTY (OR PROPERTIES) REFERENCED HEREIN OR AS TO THE ACCURACY OR COMPLETENESS OF THE INFORMATION CONTAINED HEREIN, AND SAME IS SUBMITTED SUBJECT TO ERRORS, OMISSIONS, CHANGE OF PRICE, RENTAL OR OTHER CONDITIONS, WITHDRAWAL WITHOUT NOTICE, AND TO ANY SPECIAL LISTING CONDITIONS IMPOSED BY THE PROPERTY OWNER(S). ANY PROJECTIONS, OPINIONS OR ESTIMATES ARE SUBJECT TO UNCERTAINTY AND DO NOT SIGNIFY CURRENT OR FUTURE PROPERTY PERFORMANCE.