



WESTCHASE CORPORATE PARK

11201-11331 RICHMOND AVE



DAN MEYER

danmeyer@mcmmanagement.com

meyercarrington.com

O: 713-668-2369

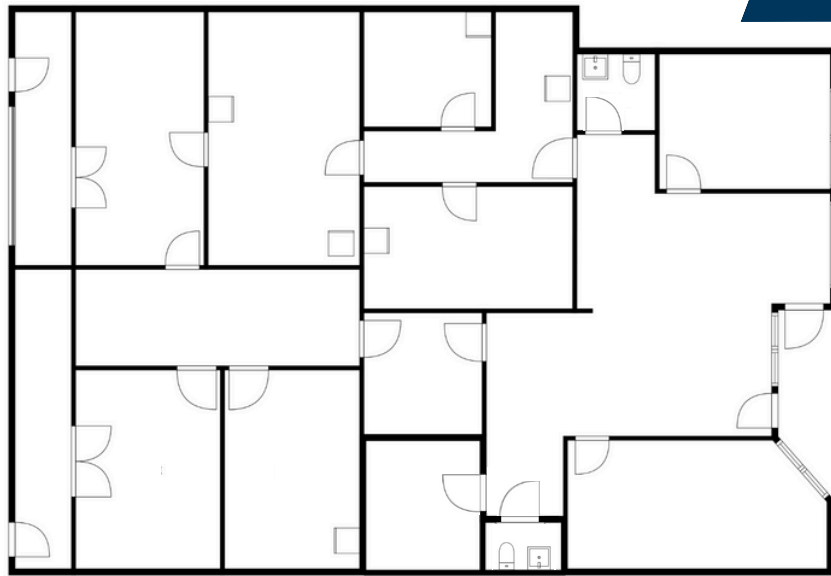
C: 713-806-8940

MEYER CARRINGTON



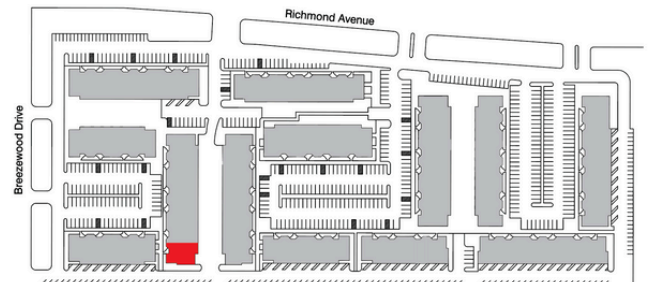
11321 RICHMOND AVE

SUITE M110-M111
2,905 SF



Suite Layout

- 2,905 SF
- Fully built-out as a lab
- Tenant controlled HVAC
- 2 restrooms
- Drive up access
- Conveniently located with direct access to Beltway 8 and Westpark Tollway



DAN MEYER

danmeyer@mcmanagement.com

meyercarrington.com

O: 713-668-2369

C: 713-806-8940

MEYER CARRINGTON