



Vacant Land Ready for Development

0 NEW PARK DRIVE
MARION, OH 43302

LAND FOR SALE

LOT SIZE

3.98 AC+/-

SALE PRICE

\$150,000

PARCEL NUMBER

200111502500

PROPERTY HIGHLIGHTS

- Land is currently vacant and ready to be developed
- Frontage on New Park Drive and Wheeler Drive
- All utilities are currently on site
- Site is adjacent to the planned EMS station at the southeast corner of US 23 and SR 309
- Adjacent to the Wheeler Lakes apartment complex with 96 units and condos

For more information, please contact:

Bruce Massa, SIOR, CRE

Associate Director

t 614-883-1330

Bruce.Massa@nmrk.com

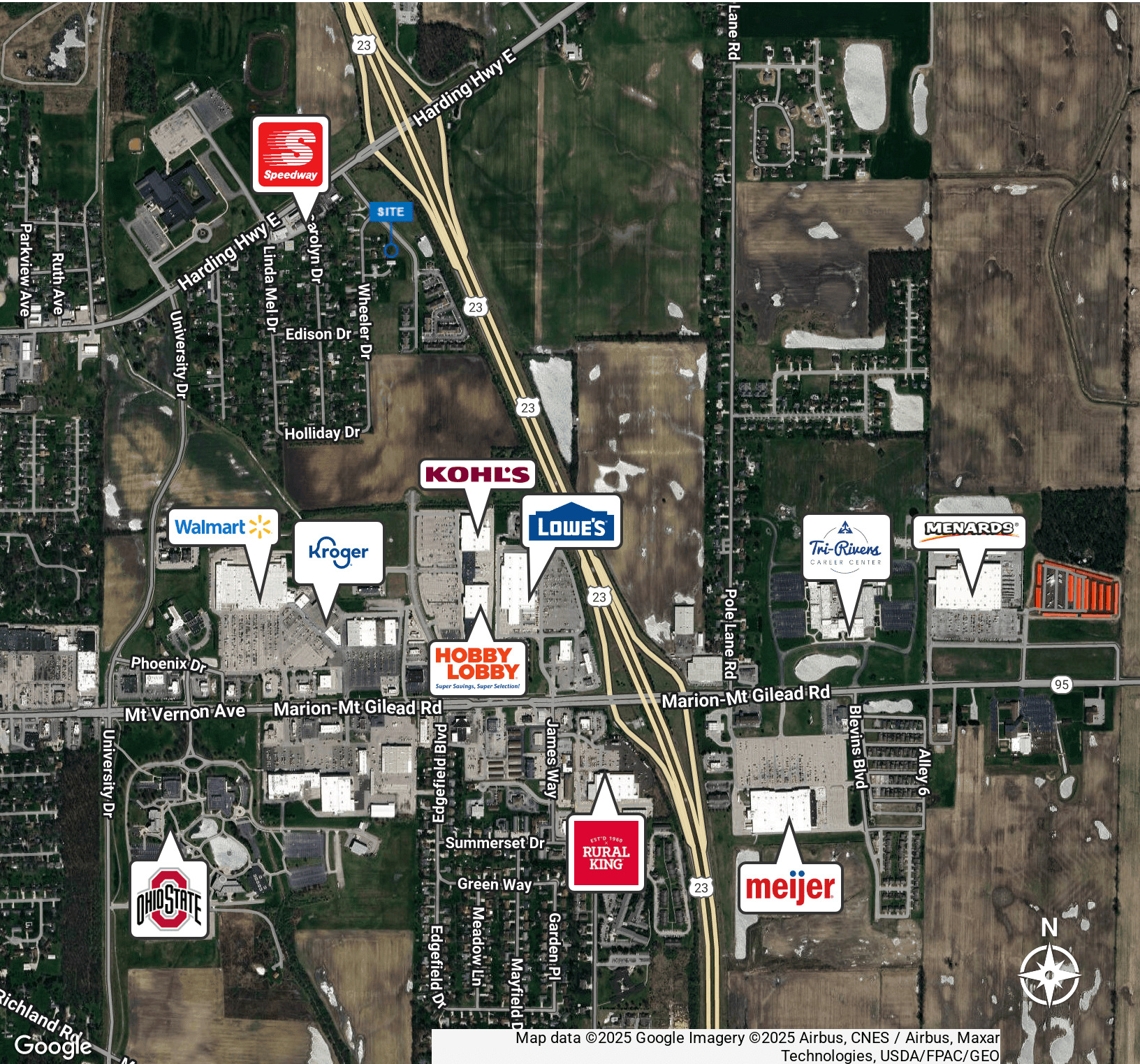
150 E. Broad Street, Suite 500
Columbus, OH 43215



NEWMARK

The information contained herein has been obtained from sources deemed reliable but has not been verified and no guarantee, warranty or representation, either express or implied, is made with respect to such information. Terms of sale or lease and availability are subject to change or withdrawal without notice.

VACANT LAND READY FOR DEVELOPMENT / NEW PARK DRIVE, MARION, OH 43302



Bruce Massa, SIOR, CRE

Associate Director

t 614-883-1330

Bruce.Massa@nmrk.com

NEWMARK