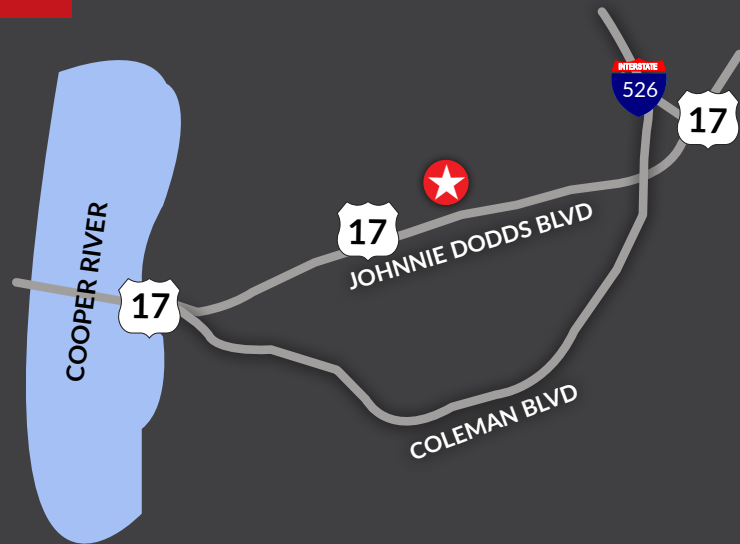


PRICE
REDUCED

OFFICE SPACE FOR SALE OR LEASE

710 Johnnie Dodds Blvd., Suite 100
Mt. Pleasant SC 29464

- Class A building located in a quiet setting with excellent access to the Ravenel Bridge and I-526
- 3,639 SF office suite with open work spaces as well as private offices and a training room
- The suite has a glass door entry immediately off main lobby on the first floor
- Includes a private patio, full-size break area, and copy area
- Common area features include slate floors and floor-to ceiling windows

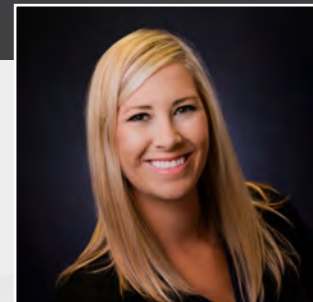


Jon Chalfie
Vice President of Brokerage
843.345.6000

**Click Here for S.C. Agency Relationships Disclosure



LANDMARK
ENTERPRISES
COMMERCIAL REAL ESTATE



Hailey Clifton
Associate
843.300.5209

www.landmark-enterprises.com

*We obtained the information above from sources we believe to be reliable. However, we have not verified its accuracy and make no guarantee, warranty or representation about it. It is submitted subject to the possibility of errors, omissions, change of price, rental or other conditions, prior sale, lease or financing, or withdrawal without notice. We include projections, opinions, assumptions or estimates for example only, and they may not represent current or future performance of the property. You and your tax and legal advisors should conduct your own investigation of the property and transaction.

OFFICE SPACE FOR SALE OR LEASE

OFFERING SUMMARY

PROPERTY
ADDRESS: 710 Johnnie Dodds Blvd.,
Suite 100
Mt. Pleasant SC 29464

TMS: 514-00-00-425

Sale Price: 1,350,000

Lease Price: \$28/SF NNN

Size: 3,639 SF



710 JOHNNIE DODDS BLVD. | SUITE 100 | MT. PLEASANT SC 29464



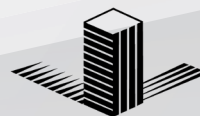
LANDMARK
ENTERPRISES
COMMERCIAL REAL ESTATE

www.landmark-enterprises.com

OFFICE SPACE FOR SALE OR LEASE



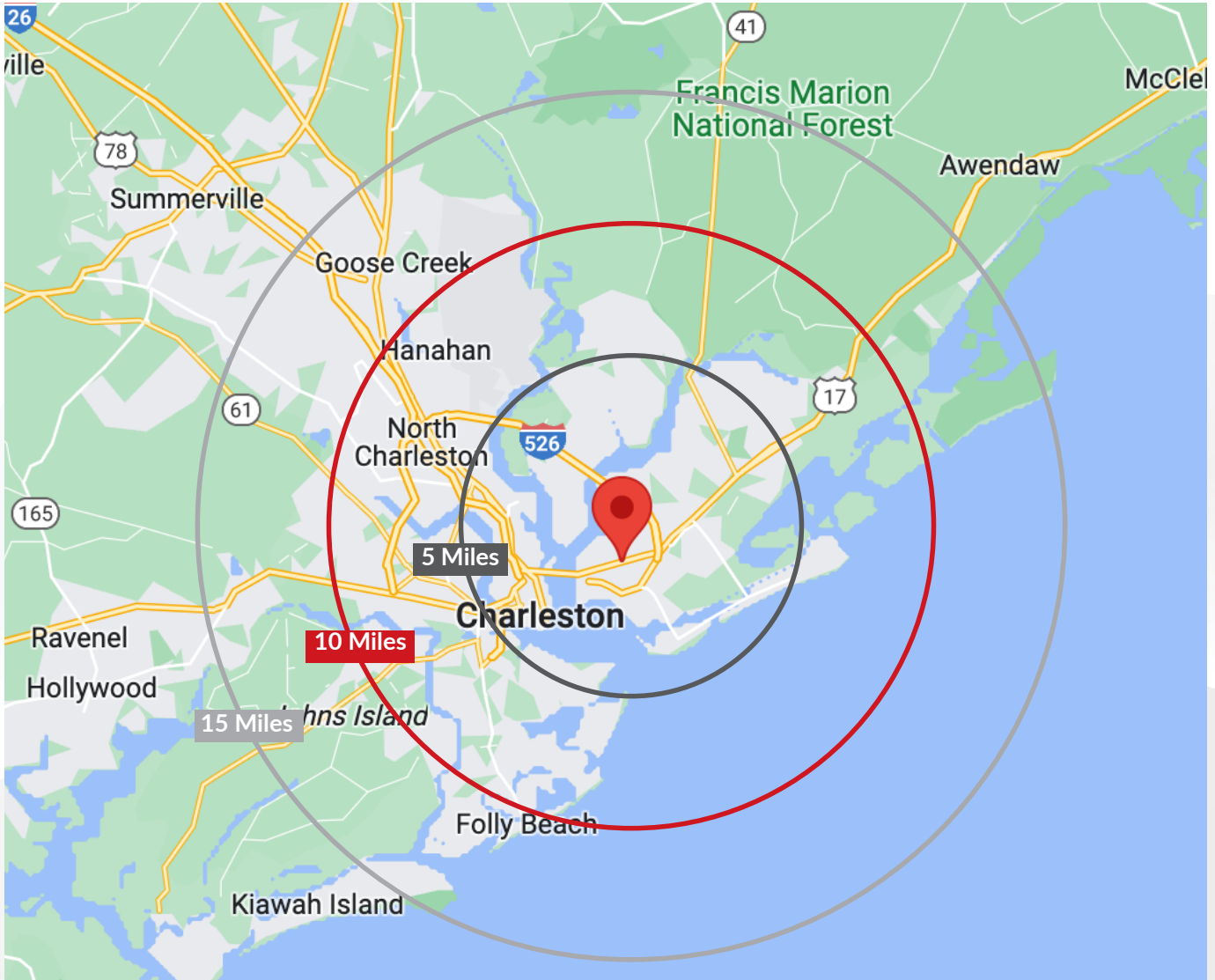
710 JOHNNIE DODDS BLVD. | SUITE 100 | MT. PLEASANT SC 29464



LANDMARK
ENTERPRISES
COMMERCIAL REAL ESTATE

OFFICE SPACE FOR SALE OR LEASE

DISTANCE MAP



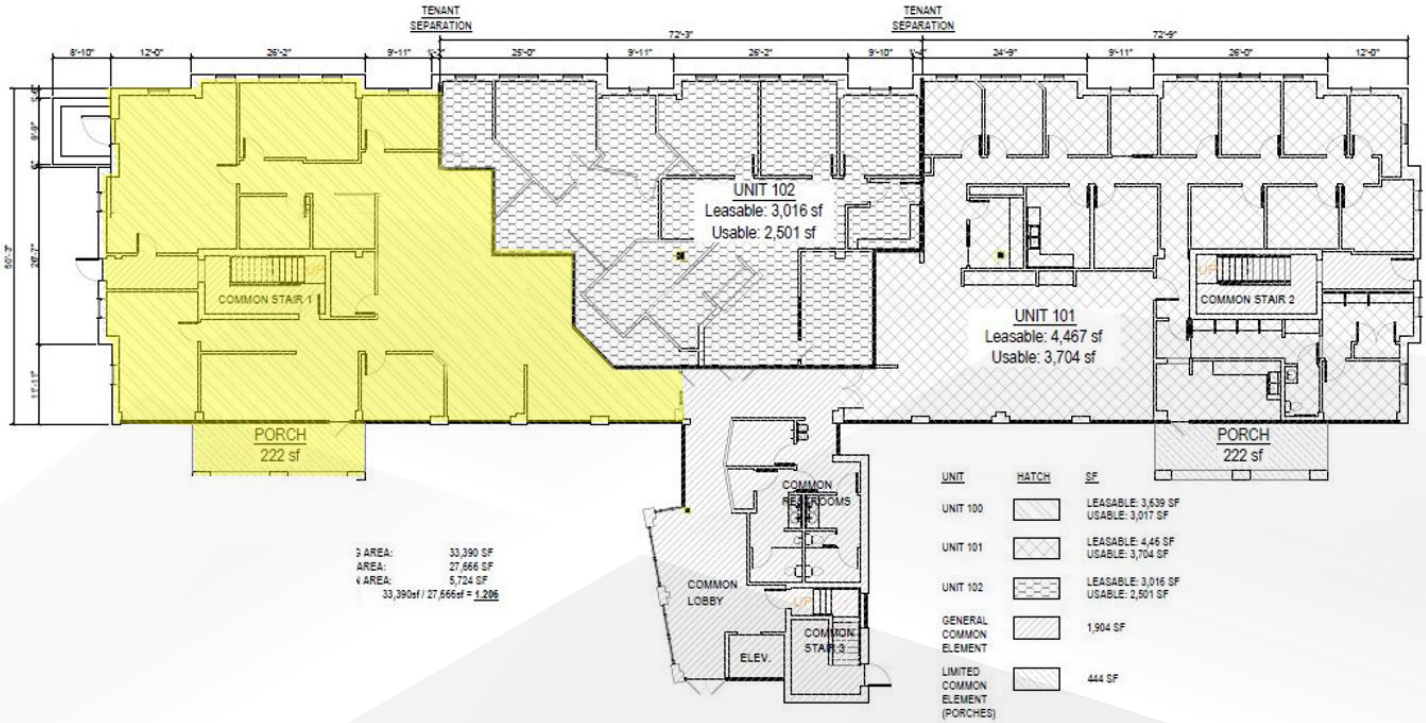
710 JOHNNIE DODDS BLVD. | SUITE 100 | MT. PLEASANT SC 29464



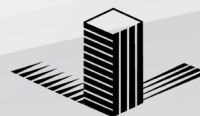
LANDMARK
ENTERPRISES
COMMERCIAL REAL ESTATE

OFFICE SPACE FOR SALE OR LEASE

FLOOR PLAN



710 JOHNNIE DODDS BLVD. | SUITE 100 | MT. PLEASANT SC 29464



LANDMARK
ENTERPRISES
COMMERCIAL REAL ESTATE

OFFICE SPACE FOR SALE OR LEASE

AERIAL MAP



710 JOHNNIE DODDS BLVD. | SUITE 100 | MT. PLEASANT SC 29464



LANDMARK
ENTERPRISES
COMMERCIAL REAL ESTATE