

UNDER LEASE



175 Thomas Johnson Drive

Frederick, MD 21702

Overview

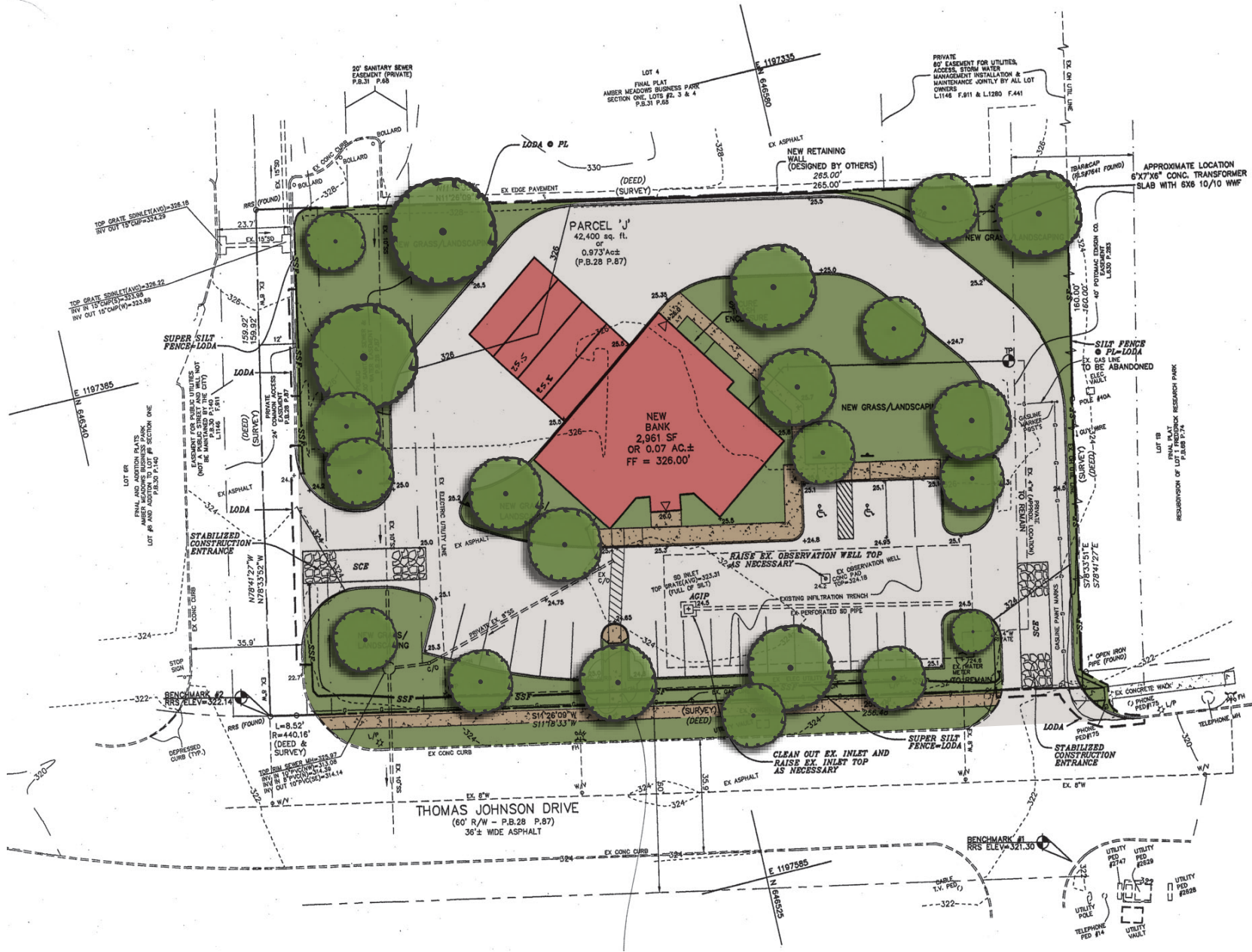
Freestanding 2,961 square foot bank branch on 0.92 acres. Four drive thru lanes with bypass and 21 parking spaces.

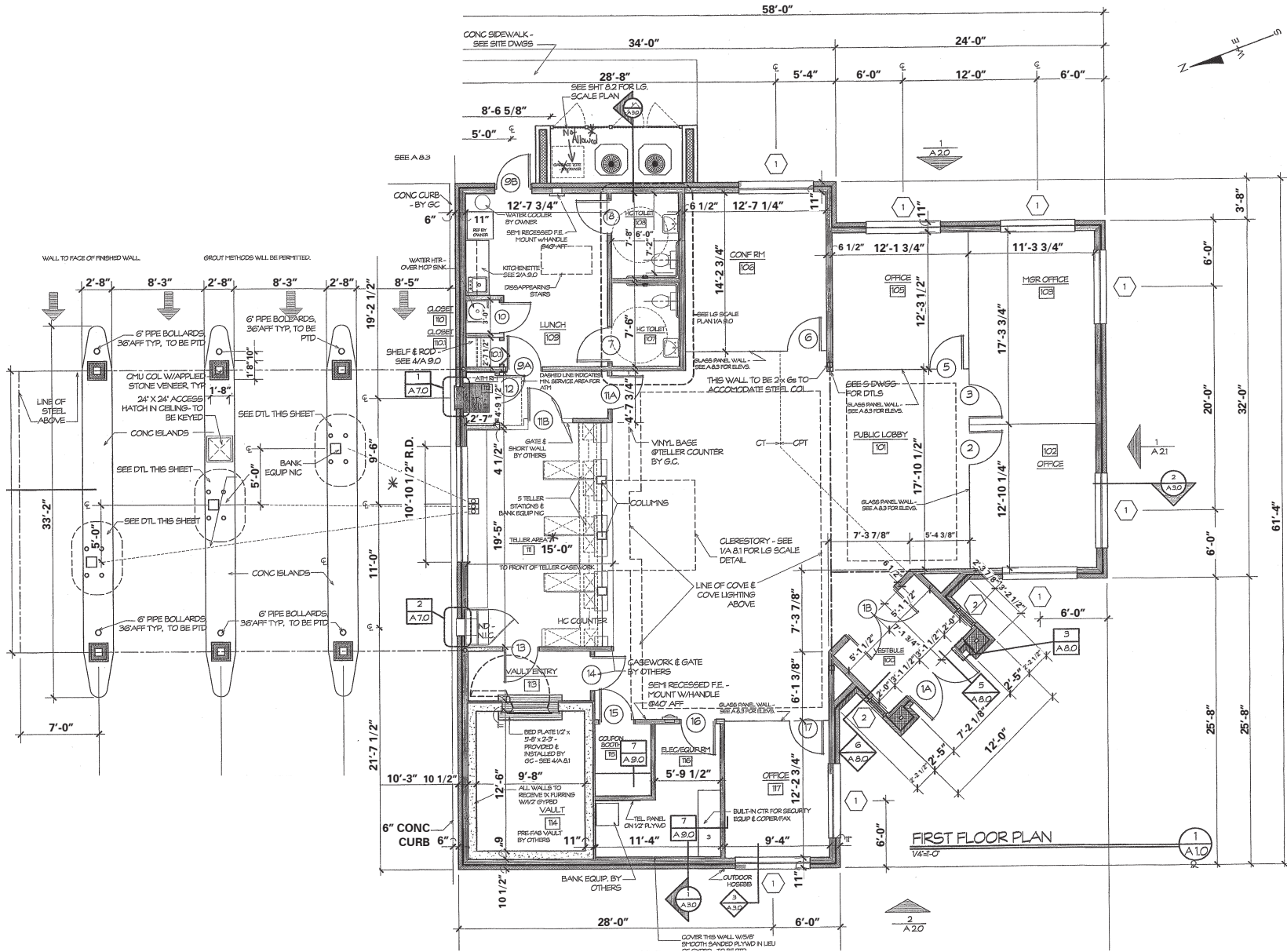
Quick Facts

- Availability** Under Lease
- Size** 2,961 Square Feet
- Rental Rate** Negotiable
- Net Charges** TBD
- Zoning** GC - General Commercial (City of Frederick)
- Nearby Tenants**

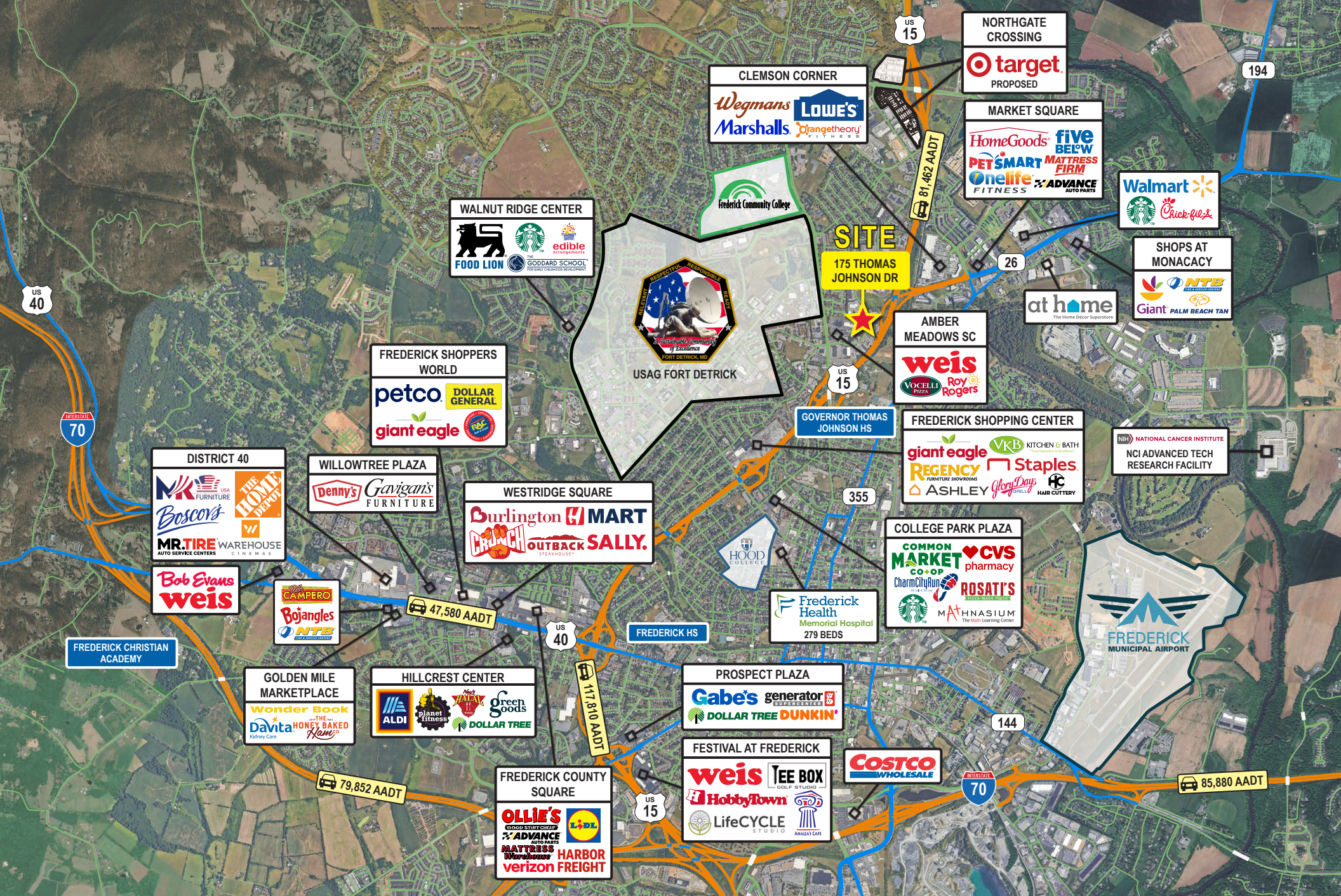


2025 Demographics	1 mile	3 miles	5 miles
POPULATION	11,065	82,719	143,977
HOUSEHOLDS	4,636	32,507	54,672
AVG. HH INCOME	\$111,229	\$137,247	\$140,284
DAYTIME POPULATION	19,575	101,382	156,977
TRAFFIC COUNT	81,462 AADT (MD-15)	8,504 AADT (Thomas Johnson Dr)	











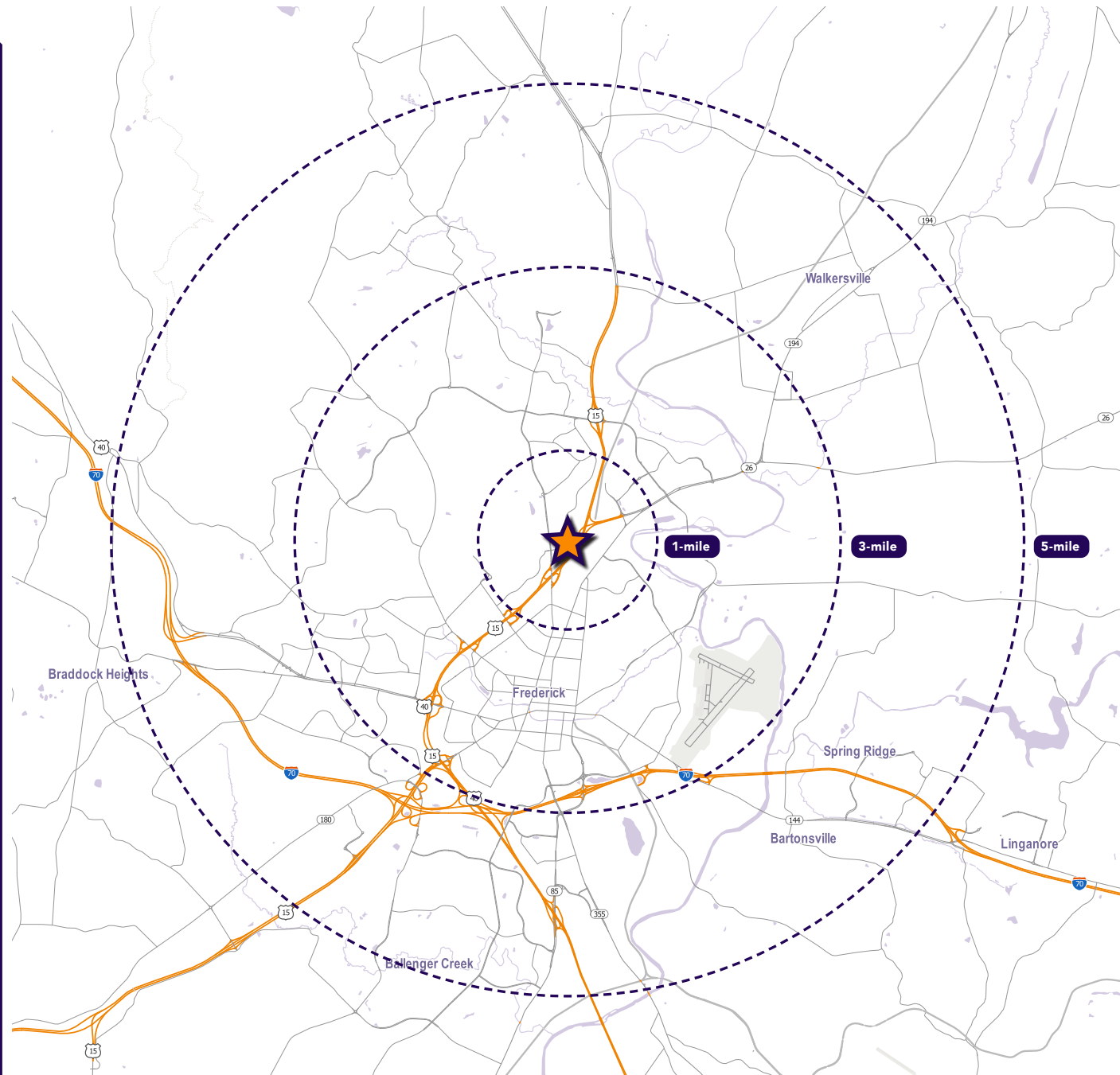
Interested? Contact:

Andrew Segall

 asegall@segallgroup.com

 410.753.3947

 443.960.0361



Maryland

605 South Eden Street
Suite 200
Baltimore, MD 21231
410.753.3000

DC • Northern VA

8245 Boone Boulevard
Suite 200
Tysons, VA 22182
202.833.3830

Richmond

4701 Cox Road
Suite 100
Glen Allen, VA 23060
804.207.4040

Online

www.segallgroup.com

Member of
**REALTY
RESOURCES**

**RETAIL
READY.**

segall
GROUP