



OFFICE/RETAIL SPACE

411 S. Frankfort Avenue, Tulsa

- The Blue Dome/East Village District of downtown Tulsa is home to some of the highest sales per square foot restaurants and retail in the Central Business District
- 400+ hotel rooms within 4 city blocks
- 40,000+ daytime population in CBD
- 2 million+ annual attendees to down-town events

PRICING

SPACES: 3,564-18,715 square feet

RENT: Call for details

NNN: Call for details

TI: Negotiable

MILE RADIUS	1	3	5
POPULATION	8,284	75,301	162,826
HOUSEHOLDS	3,300	32,328	69,707
AVE. INCOME	\$61,798	\$65,041	\$64,702

NEIGHBORS

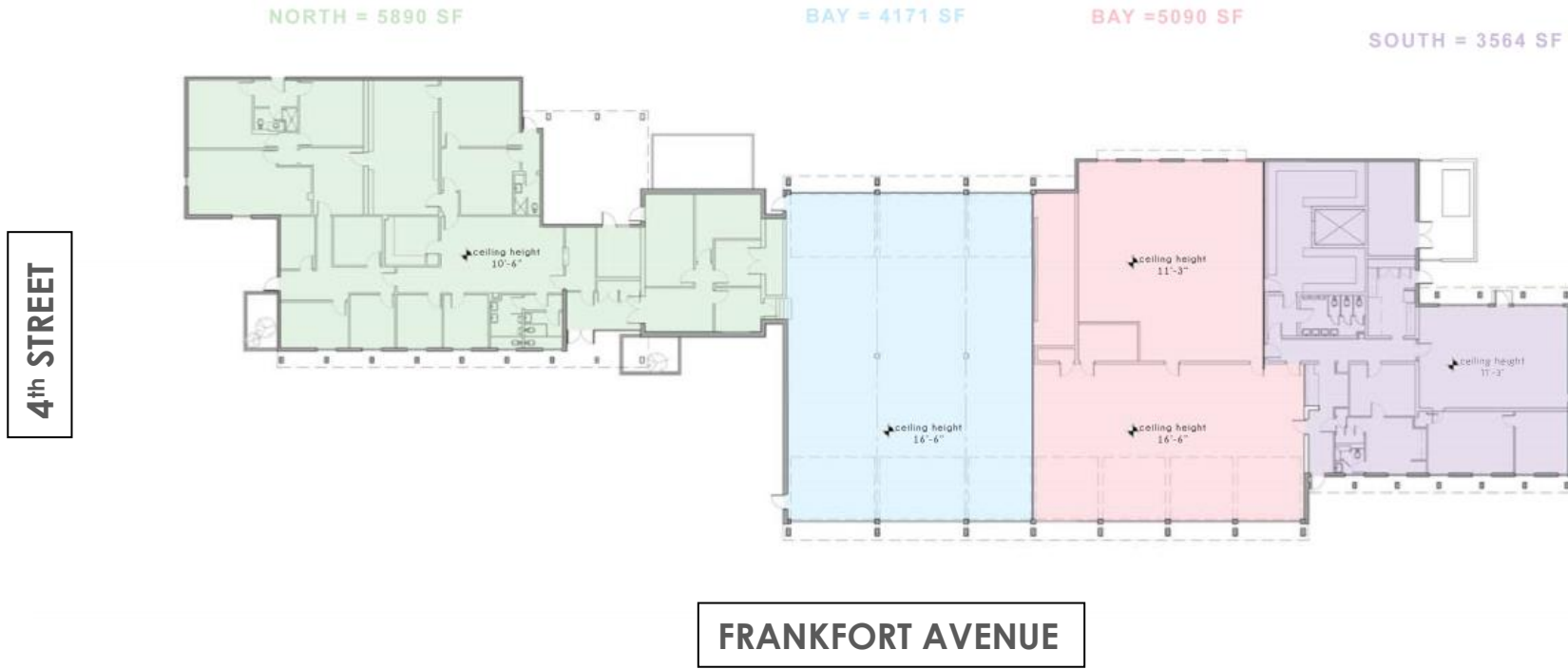


MORE INFORMATION

Bob Reppe

bob@reppropertygroup.com

918-237-6903



FIRESTATION
NO. 1

overall tenant floor plan



