



Moses Tucker
PARTNERS

Little Rock (HEADQUARTERS)
200 River Market Ave, Suite 300
Little Rock, AR 72201
501.376.6555

Bentonville (BRANCH)
805 S Walton Blvd, Suite 123
Bentonville, AR 72712
479.271.6118

OFFICE/RETAIL SPACE FOR SALE

217 W 2nd Street, Little Rock, AR



CONTACT US TODAY
501.376.6555 | [mosestucker.com](https://www.mosestucker.com)



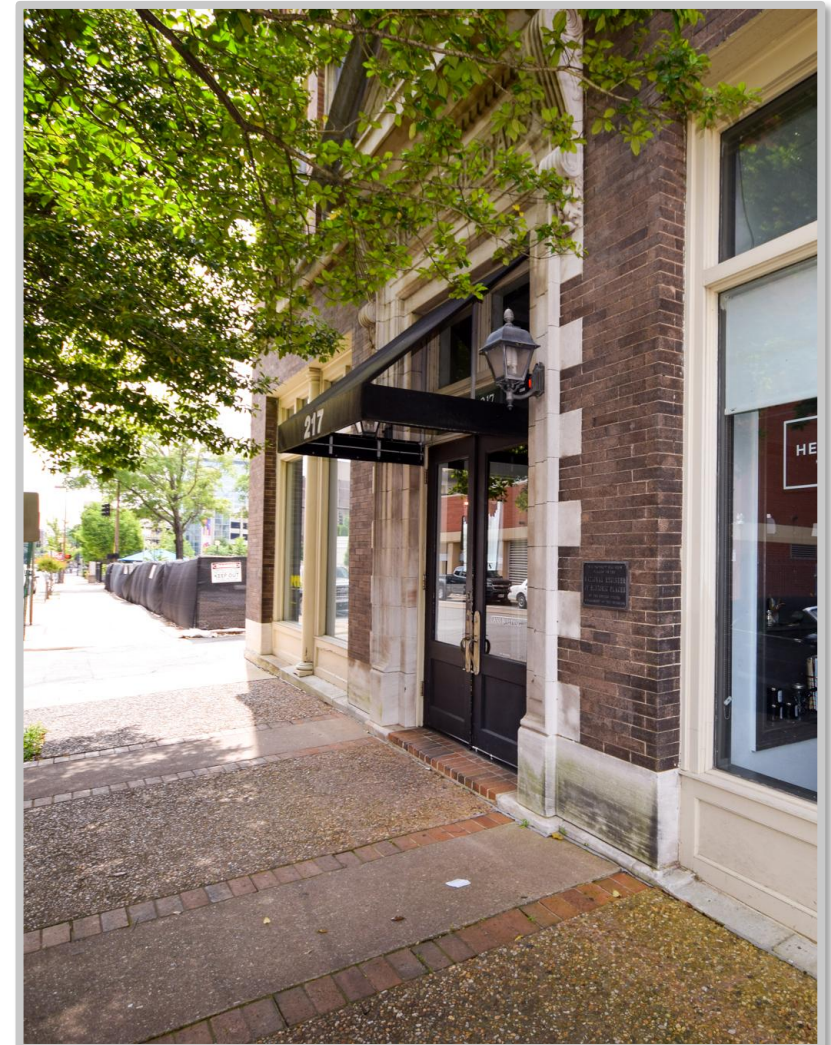
Property Understanding

OVERVIEW

Offering	For Sale
Address	217 W 2 nd St, Little Rock, AR 72201
Property Type	Office/Retail
Sale Price	\$395,000
Available Space	±3,856 SF – Entire 1 st floor
Building Size	±12,564 SF
Year Built	1902

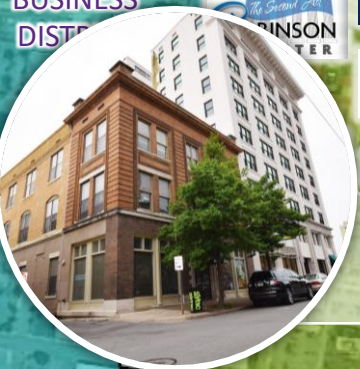
PROPERTY HIGHLIGHTS

- **Entire first floor of Gans Building for sale**
- Professional office space in downtown Little Rock with beautiful historic architecture
- Financial info available upon request
- Owner occupies 1,458 SF and will vacate upon sale or lease-back
- 24-hour access; after hours key-fob security system
- Conveniently located at 2nd Street & Center Street across from the Stephens Building in the heart of the Central Business District
- 10-minute drive to Bill & Hillary Clinton National Airport
- Ideal location near county courthouses, hotels, restaurants, and River Market District





CENTRAL BUSINESS DISTRICT



B

ARVEST BANK



Little Rock, AR



Little Rock is the capital of Arkansas and the state's largest municipality, with over 202,000 people calling it home. It is considered where "America Comes Together," boasting 40% of the nation's population and buying power within a 550-mile radius of the city center.

Notably, Little Rock is considered one of the "Top 10 Places For Young Professionals To Live" ([Forbes 2023](#)), a "Best Place for Business and Careers" ([Forbes 2019](#)), one of the "Best Travel-Worthy State Capitals" ([USA Today 2014](#)), and one of "America's 10 Great Places to Live" ([Kiplinger's Personal Finance 2013](#)).

Central Arkansas has experienced significant population growth over the past decade due to the three major universities that call the area home, a growing technology sector, and a variety of government- and business-related industries. Major corporations headquartered in the Little Rock metroplex include Dillard's, Windstream Communications, and Acxiom. One of the largest public employers in the state, with more than 10,000 employees, is the University of Arkansas for Medical Sciences and its affiliates, which have a total economic impact in Arkansas of ~\$5 billion per year. Simultaneously to the population growth, Central Arkansas's tourism industry is booming, with 10 million+ visitors flocking to the region each year.

DEMOGRAPHICS*

Population

3 MILES

43,309

5 MILES

114,036

10 MILES

300,300

Households

20,525

51,967

131,135

Average Age

40.5

39.9

39.7

Average Household Income

\$60,572

\$69,731

\$75,593

Businesses

3,970

6,627

13,040

**Demographic details based on property location*

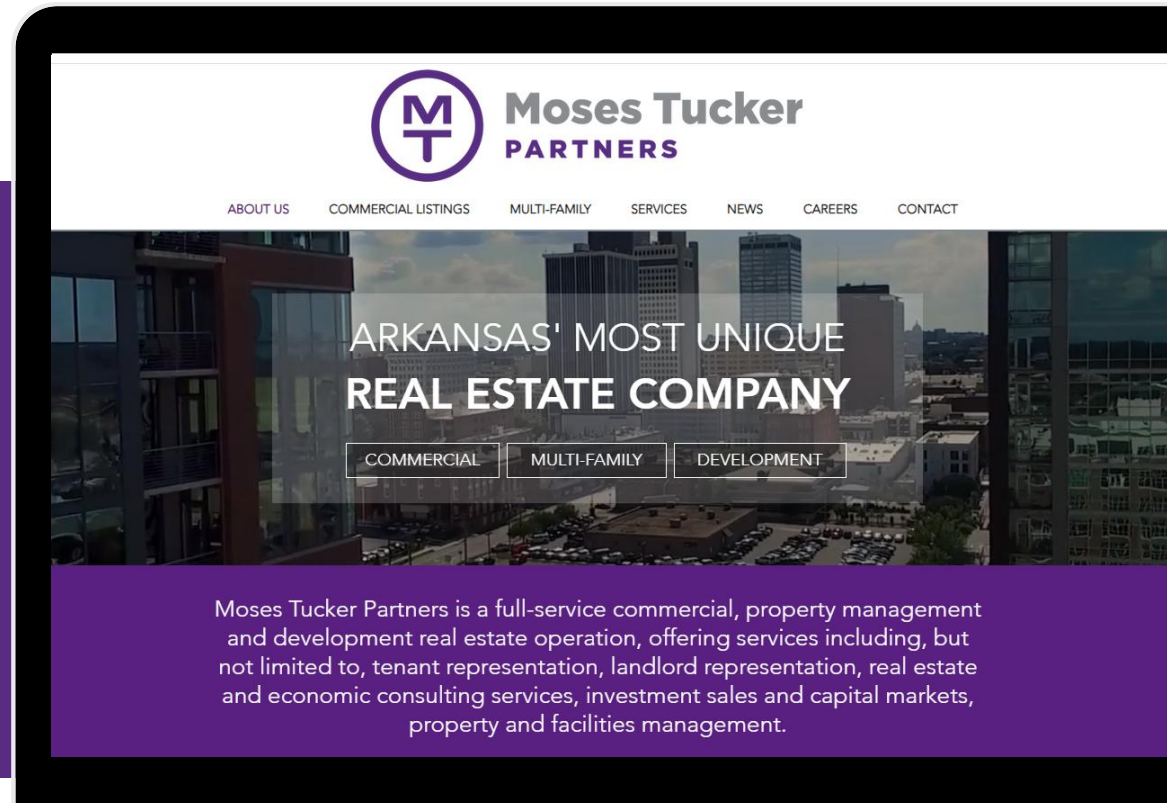
CONNECT

 (501) 376-6555

 www.mosestucker.com

 info@mosestucker.com

 200 River Market Ave, Suite 300,
Little Rock, AR 72201



Matt Beachboard
Brokerage Associate
mbeachboard@mosestucker.com

Sarah Burkhead
Brokerage Coordinator
sburkhead@mosestucker.com

DISCLAIMER

Moses Tucker Partners represents the owner of the property represented herein. Although all information furnished regarding property for sale, rental, or financing is from sources deemed reliable, such information has not been verified and no express representation is made nor is any to be implied as to the accuracy thereof and it is submitted subject to errors, omissions, change of price, rental or other conditions, prior sale, lease or financing, or withdrawal without notice and to any special conditions imposed by our principal.