

# FOR SALE

Vacant Land – Deerfield Twp.

**Insite**  
COMMERCIAL  
Established 2001

2019 Township Drive  
Suite 104  
Commerce, MI 48390



NWC & NEC M-24 and M-90  
Deerfield Twp., MI 48435

EXCLUSIVELY LISTED BY:

Randy Thomas  
CEO/President  
C: (248) 891-5050  
O: (248) 359-9000 x9  
[rthomas@insitecommercial.com](mailto:rthomas@insitecommercial.com)

(248) 359-9000  
[www.insitecommercial.com](http://www.insitecommercial.com)



## PROPERTY INFORMATION

Executive Summary

page 3

## LOCATION INFORMATION

Location Maps

page 4

Aerial Maps

page 5

Demographics

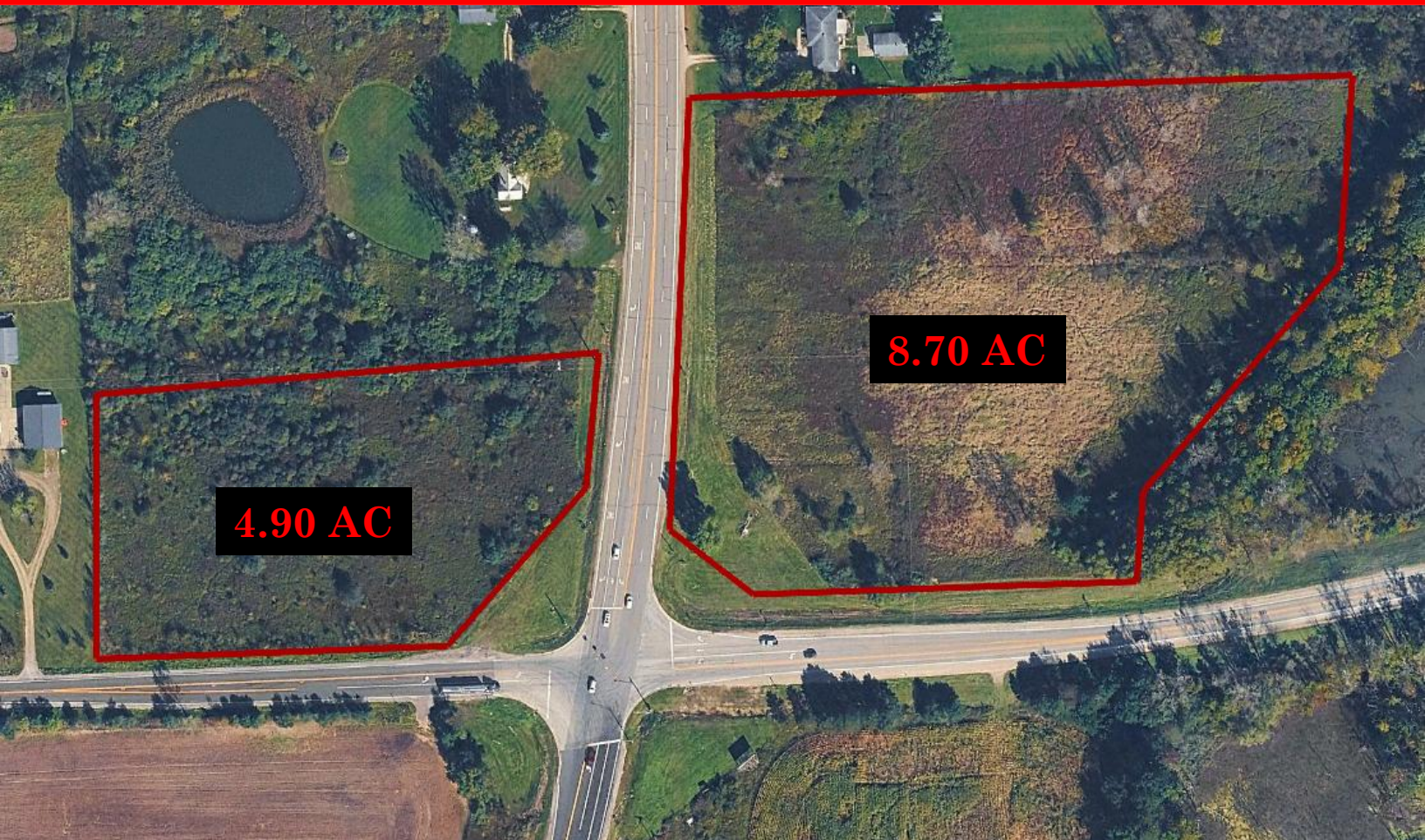
pages 6-8

Traffic Counts

page 9

## CONTACT INFORMATION

page 10



**PROPERTY OVERVIEW**

NE corner of M-24 & M-90 – Fronts both M-90 (~350 ft) and M-24 (~500 ft). Two great sites for retail-retail pad. Ideal for gas station or strip mall.

**OFFERING SUMMARY**

<b>Sale Price:</b>	<b>\$150,000 per AC</b>
<b>Land Size:</b>	<b>NWC: 4.90 AC NEC: 8.70 AC Total: 13.60 AC</b>
<b>Utilities</b>	<b>No utilities</b>
<b>Zoning:</b>	<b>NWC: R-1 NEC: C</b>

**DEMOGRAPHICS (5-Mile Radius)**

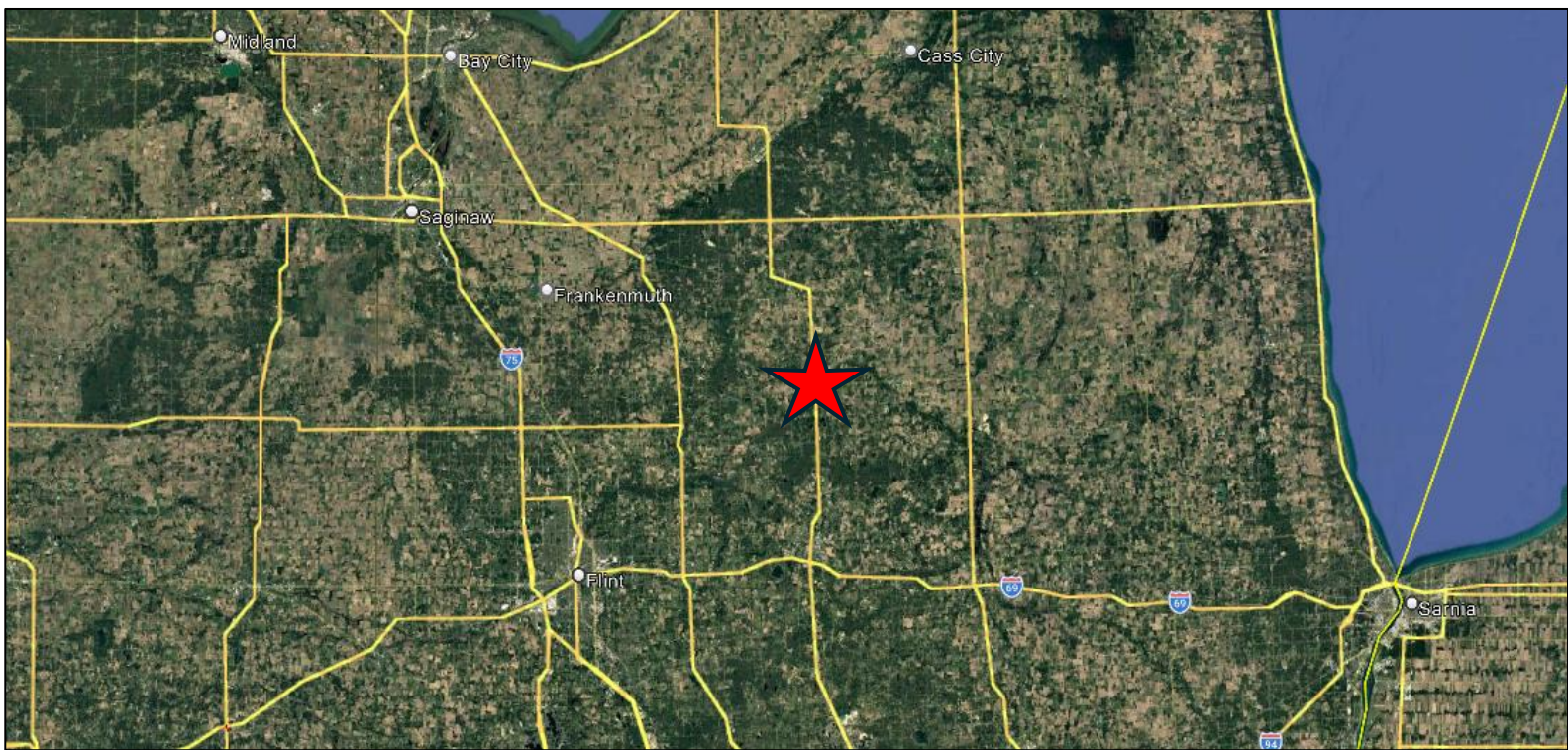
- **Population:** 9,109 people
- **Households:** 3,527 homes
- **Avg. HH Income:** \$90,590 USD
- **Traffic Counts:**
  - 8,485 VPD – M-24
  - 3,877 VPD – M-90



### LOCAL



### REGIONAL



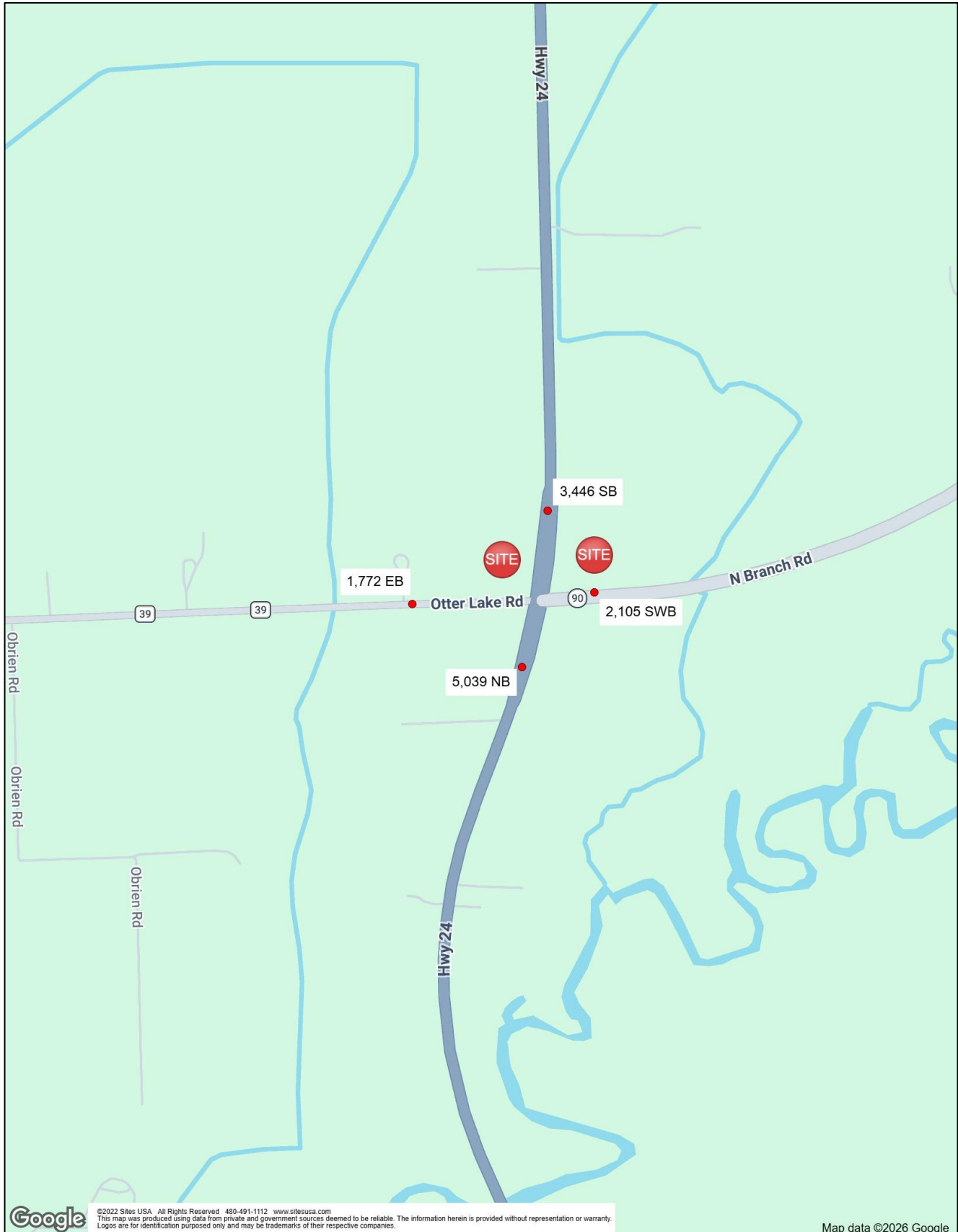
M-24 & M-90 Deerfield Twp., MI 48435	1 mi radius	3 mi radius	5 mi radius
<b>Population</b>			
2025 Estimated Population	474	3,760	9,109
2030 Projected Population	474	3,764	9,060
2020 Census Population	420	3,480	8,938
2010 Census Population	407	3,487	9,055
Projected Annual Growth 2025 to 2030	-	-	-0.1%
Historical Annual Growth 2010 to 2025	1.1%	0.5%	-
<b>Households</b>			
2025 Estimated Households	171	1,476	3,527
2030 Projected Households	173	1,503	3,564
2020 Census Households	152	1,318	3,344
2010 Census Households	142	1,269	3,253
Projected Annual Growth 2025 to 2030	0.3%	0.4%	0.2%
Historical Annual Growth 2010 to 2025	1.3%	1.1%	0.6%
<b>Age</b>			
2025 Est. Population Under 10 Years	10.4%	10.1%	10.2%
2025 Est. Population 10 to 19 Years	13.3%	11.9%	11.8%
2025 Est. Population 20 to 29 Years	11.3%	11.2%	10.7%
2025 Est. Population 30 to 44 Years	20.1%	18.6%	18.7%
2025 Est. Population 45 to 59 Years	20.8%	20.6%	20.5%
2025 Est. Population 60 to 74 Years	18.9%	20.6%	21.0%
2025 Est. Population 75 Years or Over	5.1%	7.1%	7.2%
2025 Est. Median Age	39.0	42.4	43.0
<b>Marital Status &amp; Gender</b>			
2025 Est. Male Population	48.7%	50.4%	51.2%
2025 Est. Female Population	51.3%	49.6%	48.8%
2025 Est. Never Married	21.0%	24.5%	26.5%
2025 Est. Now Married	49.5%	54.3%	55.8%
2025 Est. Separated or Divorced	26.5%	12.5%	9.8%
2025 Est. Widowed	3.0%	8.7%	7.8%
<b>Income</b>			
2025 Est. HH Income \$200,000 or More	-	0.4%	1.4%
2025 Est. HH Income \$150,000 to \$199,999	19.2%	10.0%	11.8%
2025 Est. HH Income \$100,000 to \$149,999	16.0%	21.1%	20.8%
2025 Est. HH Income \$75,000 to \$99,999	11.9%	13.5%	14.3%
2025 Est. HH Income \$50,000 to \$74,999	10.0%	21.2%	20.8%
2025 Est. HH Income \$35,000 to \$49,999	6.3%	9.2%	9.2%
2025 Est. HH Income \$25,000 to \$34,999	11.0%	6.5%	6.8%
2025 Est. HH Income \$15,000 to \$24,999	4.4%	7.1%	6.6%
2025 Est. HH Income Under \$15,000	21.2%	11.0%	8.4%
2025 Est. Average Household Income	\$88,702	\$84,818	\$90,590
2025 Est. Median Household Income	\$68,225	\$70,436	\$76,252
2025 Est. Per Capita Income	\$31,989	\$33,295	\$35,086
2025 Est. Total Businesses	14	60	120
2025 Est. Total Employees	89	384	663

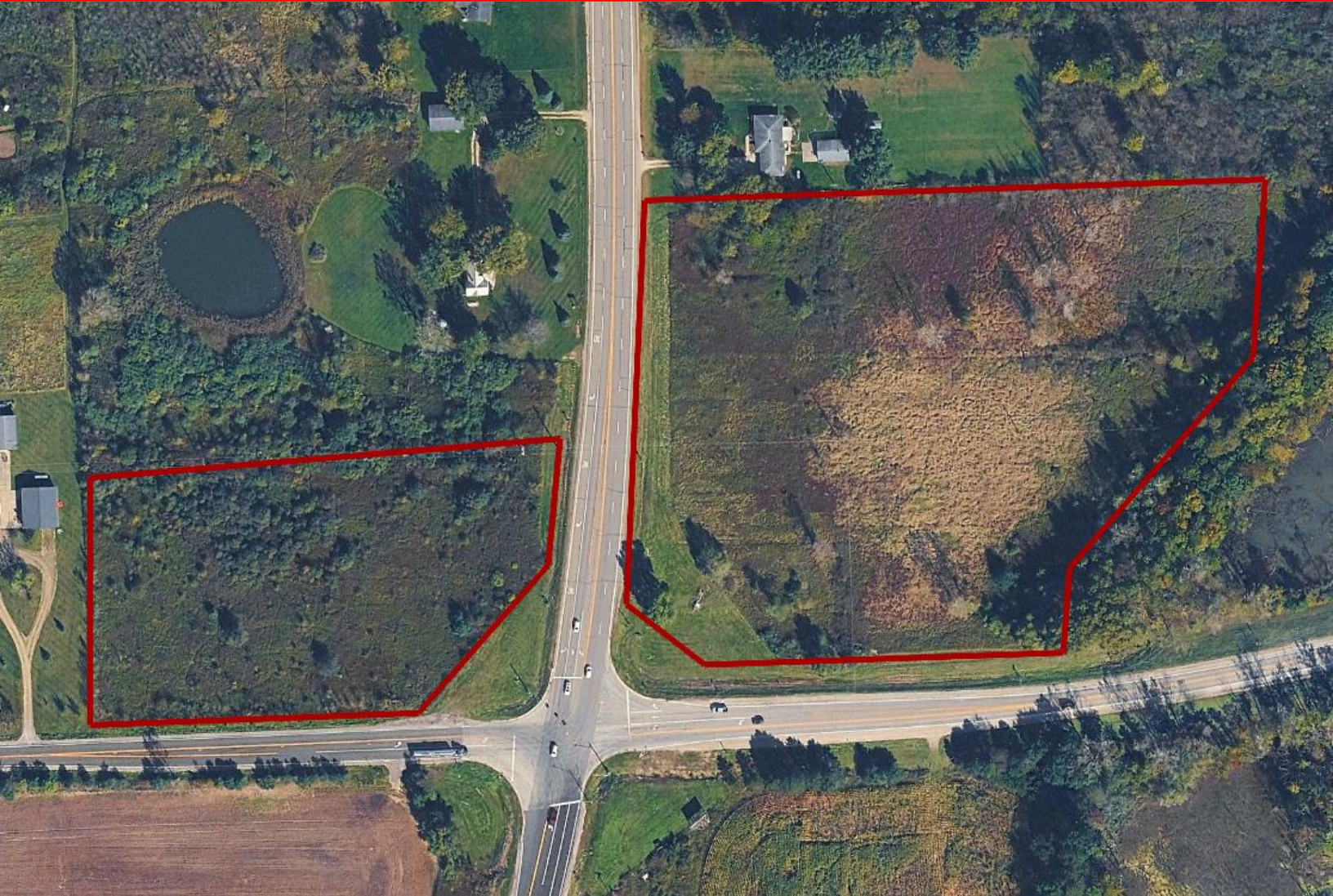
M-24 & M-90 Deerfield Twp., MI 48435	1 mi radius	3 mi radius	5 mi radius
<b>Race</b>			
2025 Est. White	92.9%	94.6%	94.8%
2025 Est. Black	1.5%	0.9%	0.8%
2025 Est. Asian or Pacific Islander	0.5%	0.3%	0.3%
2025 Est. American Indian or Alaska Native	-	0.1%	0.2%
2025 Est. Other Races	5.0%	4.0%	3.9%
<b>Hispanic</b>			
2025 Est. Hispanic Population	22	157	385
2025 Est. Hispanic Population	4.7%	4.2%	4.2%
2030 Proj. Hispanic Population	6.2%	6.0%	5.8%
2020 Hispanic Population	4.2%	3.4%	3.0%
<b>Education (Adults 25 &amp; Older)</b>			
2025 Est. Adult Population (25 Years or Over)	335	2,741	6,649
2025 Est. Elementary (Grade Level 0 to 8)	5.0%	2.6%	2.4%
2025 Est. Some High School (Grade Level 9 to 11)	5.1%	5.5%	6.1%
2025 Est. High School Graduate	51.3%	41.0%	42.3%
2025 Est. Some College	14.5%	20.2%	21.6%
2025 Est. Associate Degree Only	5.7%	9.8%	10.1%
2025 Est. Bachelor Degree Only	16.0%	17.4%	14.5%
2025 Est. Graduate Degree	2.3%	3.4%	3.0%
<b>Housing</b>			
2025 Est. Total Housing Units	179	1,596	3,785
2025 Est. Owner-Occupied	72.2%	74.4%	79.1%
2025 Est. Renter-Occupied	23.3%	18.0%	14.0%
2025 Est. Vacant Housing	4.6%	7.5%	6.8%
<b>Homes Built by Year</b>			
2025 Homes Built 2010 or later	8.0%	4.3%	2.8%
2025 Homes Built 2000 to 2009	0.8%	4.8%	7.3%
2025 Homes Built 1990 to 1999	33.6%	20.7%	18.4%
2025 Homes Built 1980 to 1989	16.5%	8.5%	7.1%
2025 Homes Built 1970 to 1979	13.9%	18.0%	18.5%
2025 Homes Built 1960 to 1969	7.8%	11.8%	11.7%
2025 Homes Built 1950 to 1959	9.9%	7.7%	7.7%
2025 Homes Built Before 1949	5.0%	16.6%	19.7%
<b>Home Values</b>			
2025 Home Value \$1,000,000 or More	0.3%	0.4%	0.6%
2025 Home Value \$500,000 to \$999,999	0.3%	3.3%	5.1%
2025 Home Value \$400,000 to \$499,999	7.7%	3.0%	2.2%
2025 Home Value \$300,000 to \$399,999	8.8%	9.0%	10.7%
2025 Home Value \$200,000 to \$299,999	23.1%	30.0%	25.5%
2025 Home Value \$150,000 to \$199,999	14.9%	17.1%	19.3%
2025 Home Value \$100,000 to \$149,999	33.1%	17.1%	16.9%
2025 Home Value \$50,000 to \$99,999	6.9%	15.8%	13.5%
2025 Home Value \$25,000 to \$49,999	4.1%	3.2%	2.8%
2025 Home Value Under \$25,000	0.8%	1.1%	3.3%
2025 Median Home Value	\$160,755	\$187,516	\$187,915
2025 Median Rent	\$849	\$830	\$816

M-24 & M-90 Deerfield Twp., MI 48435	1 mi radius	3 mi radius	5 mi radius
<b>Labor Force</b>			
2025 Est. Labor Population Age 16 Years or Over	386	3,103	7,512
2025 Est. Civilian Employed	59.9%	62.2%	57.3%
2025 Est. Civilian Unemployed	-	1.1%	3.2%
2025 Est. in Armed Forces	-	-	-
2025 Est. not in Labor Force	40.1%	36.7%	39.5%
2025 Labor Force Males	48.1%	49.6%	50.7%
2025 Labor Force Females	51.9%	50.4%	49.3%
<b>Occupation</b>			
2025 Occupation: Population Age 16 Years or Over	231	1,929	4,303
2025 Mgmt, Business, & Financial Operations	22.3%	14.4%	13.5%
2025 Professional, Related	18.2%	17.0%	14.9%
2025 Service	21.5%	19.5%	21.3%
2025 Sales, Office	14.8%	14.9%	15.2%
2025 Farming, Fishing, Forestry	0.5%	0.9%	1.2%
2025 Construction, Extraction, Maintenance	1.5%	9.8%	10.4%
2025 Production, Transport, Material Moving	21.2%	23.4%	23.6%
2025 White Collar Workers	55.2%	46.4%	43.6%
2025 Blue Collar Workers	44.8%	53.6%	56.4%
<b>Transportation to Work</b>			
2025 Drive to Work Alone	82.0%	79.8%	78.5%
2025 Drive to Work in Carpool	11.5%	8.9%	10.0%
2025 Travel to Work by Public Transportation	1.1%	6.1%	5.4%
2025 Drive to Work on Motorcycle	-	-	-
2025 Walk or Bicycle to Work	0.2%	0.2%	0.5%
2025 Other Means	0.3%	0.5%	0.6%
2025 Work at Home	4.9%	4.4%	5.1%
<b>Travel Time</b>			
2025 Travel to Work in 14 Minutes or Less	15.7%	16.4%	16.6%
2025 Travel to Work in 15 to 29 Minutes	13.8%	18.7%	24.5%
2025 Travel to Work in 30 to 59 Minutes	37.2%	35.7%	37.6%
2025 Travel to Work in 60 Minutes or More	33.3%	29.2%	21.3%
2025 Average Travel Time to Work	39.6	37.0	33.5
<b>Consumer Expenditure</b>			
2025 Est. Total Household Expenditure	\$15.97 M	\$132.58 M	\$329.13 M
2025 Est. Apparel	\$301.18 K	\$2.49 M	\$6.17 M
2025 Est. Contributions, Tax and Retirement	\$3.61 M	\$30.18 M	\$77.19 M
2025 Est. Education	\$344.07 K	\$2.91 M	\$7.28 M
2025 Est. Entertainment	\$944.1 K	\$7.77 M	\$19.18 M
2025 Est. Food, Beverages, Tobacco	\$2.14 M	\$17.27 M	\$42.22 M
2025 Est. Health Care	\$1.18 M	\$10.13 M	\$24.31 M
2025 Est. Household Furnishings and Equipment	\$424.79 K	\$3.54 M	\$8.78 M
2025 Est. Household Operations, Shelter, Utilities	\$3.81 M	\$30.66 M	\$74.34 M
2025 Est. Miscellaneous Expenses	\$276.22 K	\$2.3 M	\$5.7 M
2025 Est. Personal Care	\$231.85 K	\$1.86 M	\$4.55 M
2025 Est. Transportation	\$2.71 M	\$23.46 M	\$59.43 M

# LOCATION INFORMATION

## Traffic Counts





## **Randy Thomas**

President/CEO

C: (248) 891-5050

O: (248) 359-9000 x9

[rthomas@insitecommercial.com](mailto:rthomas@insitecommercial.com)