



FOR LEASE

PRIME OFFICE SPACES AT THE HAWAII OPERA PLAZA

**848 S. BERETANIA ST.
HONOLULU, HI 96813**

INVESTMENT SUMMARY

TMK:	1-2-1-041-002
Zoning:	BMX-3
Base Rent:	Negotiable
CAM:	\$1.53 psf/mo (Approx.)
Available Spaces:	Suite 307: 2,279 SF
	Suite 309: 542 SF
	Suite 315: 1,288 SF
	Suite 408: 1,221 SF
Area:	Honolulu

PROPERTY DESCRIPTION

- Great location!
- Close Proximity to Downtown Honolulu
- Ample Parking
- Easy access to major thoroughfares and H1 Freeway
- Multiple medical service tenants

The Hawaii Opera Plaza is a 4-story mixed use property with a ground floor performing arts studio and office floors above. Customer parking is located on the ground floor with tenant parking located on the 2nd floor. The property has been excellently maintained by the Hawaii Opera Theatre. A good portion of the tenant base is in the medical service field.



Daniel Jarrett III (S)
RS-63586
808-256-3506
dj@cbi-hawaii.com

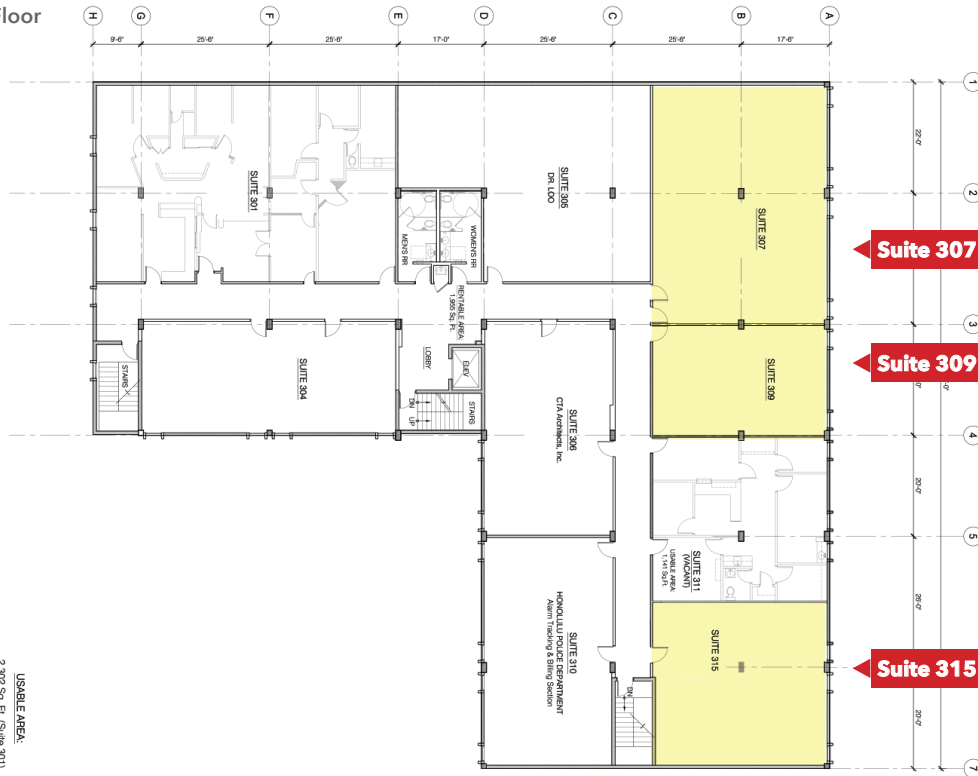
Taryn Taylor (S)
RS-85465
808-282-4583
ttaylor@cbi-hawaii.com

NAI CBI Hawaii

1712 S. King Street Suite 201
Honolulu, HI 96826
808.942.7100 | www.cbi-hawaii.com



3rd Floor



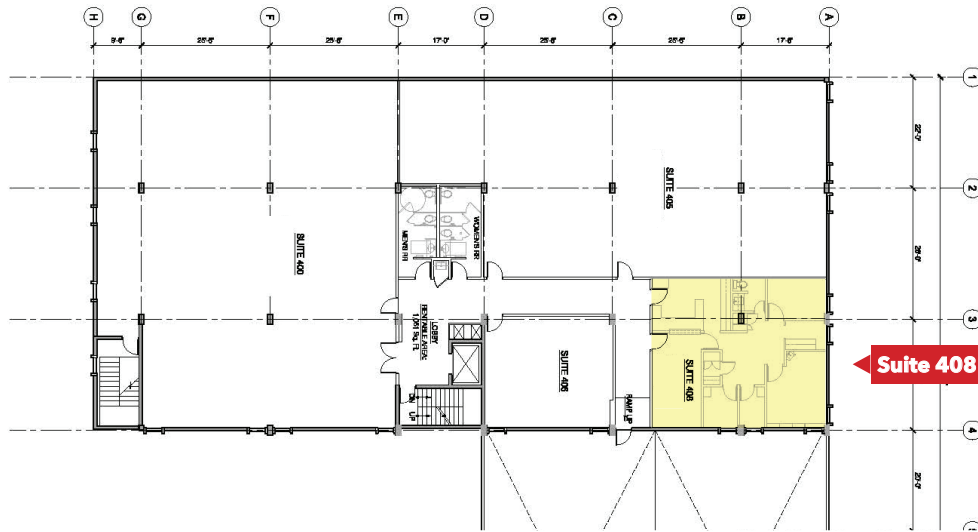
Suite 307

Suite 309

Suite 315

USABLE AREA:
2,302 Sq. Ft. (Suite 307)
1,112 Sq. Ft. (Suite 309)
+1,646 Sq. Ft. (Suite 309)

4th Floor



Suite 408

AVAILABLE UNITS

SUITE 307

Size: 2,279 SF
 Layout: Medical office space with multiple exam rooms, a triage area, reception, and private facilities.
 Can be combined with Suite 309. Private restroom

SUITE 309

Size: 542 SF
 Layout: Small office with private offices and reception.
 Suitable for small businesses, can be combined with 307

SUITE 315

Size: 1,114 SF
 Layout: Open Layout
 Multiple private offices, Private Restroom, double door entry.

SUITE 408

Size: 1,221 SF
 Layout: 2 Entries: Reception & back office entry
 3 Private offices / small conference room
 Private restroom

VIEW VIRTUAL TOURS *Scan with your smartphone*

SUITE 307



SUITE 309



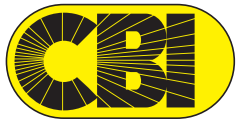
SUITE 315



NAI
CBI Hawaii
Daniel Jarrett III (S)
 RS-63586
 808-256-3506
 dj@cbi-hawaii.com

Taryn Taylor (S)
 RS-85465
 808-282-4583
 ttaylor@cbi-hawaii.com

NAI CBI Hawaii
 1712 S. King Street Suite 201
 Honolulu, HI 96826
 808.942.7100 | www.cbi-hawaii.com



SUITE 307



Daniel Jarrett III (S)
RS-63586
808-256-3506
dj@cbi-hawaii.com

Taryn Taylor (S)
RS-85465
808-282-4583
ttaylor@cbi-hawaii.com

NAI CBI Hawaii
1712 S. King Street Suite 201
Honolulu, HI 96826
808.942.7100 | www.cbi-hawaii.com



SUITE 315



Daniel Jarrett III (S)
RS-63586
808-256-3506
dj@cbi-hawaii.com

Taryn Taylor (S)
RS-85465
808-282-4583
ttaylor@cbi-hawaii.com

NAI CBI Hawaii
1712 S. King Street Suite 201
Honolulu, HI 96826
808.942.7100 | www.cbi-hawaii.com





S. King St

Vineyard Blvd.

Ward Ave.

S. Beretania St.

H1 Freeway



Daniel Jarrett III (S)
RS-63586
808-256-3506
dj@cbi-hawaii.com

Taryn Taylor (S)
RS-85465
808-282-4583
ttaylor@cbi-hawaii.com

NAI CBI Hawaii
1712 S. King Street Suite 201
Honolulu, HI 96826
808.942.7100 | www.cbi-hawaii.com

