



CORNER HIGH PROFILE A CLASS OFFICE SPACE | FOR SUBLEASE

SUITES 900 & 1001

# 150 DUFFERIN AVENUE

London, ON N6H 5L6



 **CUSHMAN & WAKEFIELD**  
Southwestern Ontario

# ABOUT THE PROPERTY

Prime Downtown London office space available for sublease situated just west of Richmond Street, near Victoria Park

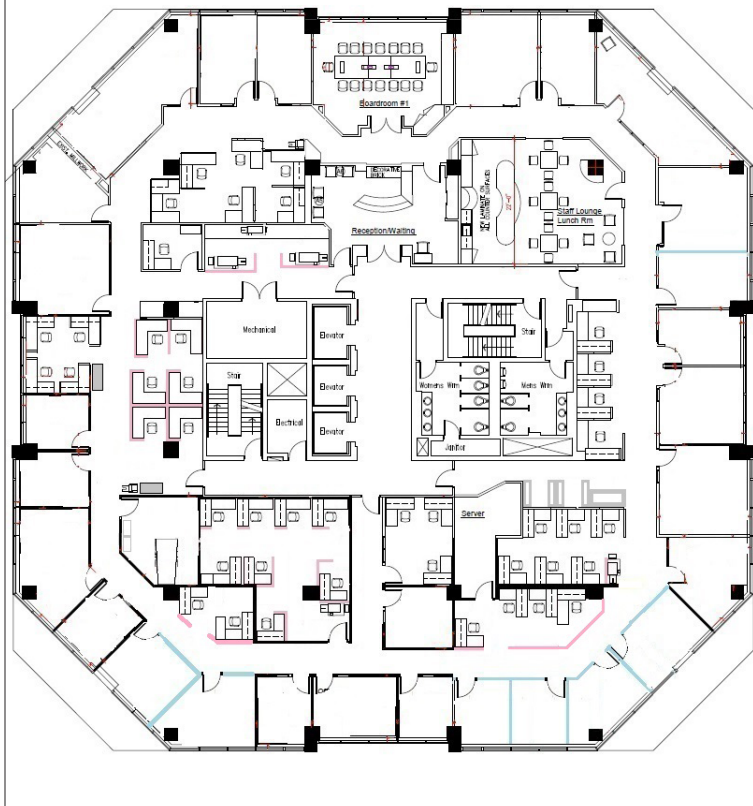
Unit	Available Space	Asking Rent	Additional Rent
Suites 900 & 1001	17,105 RSF	Head-lease restricts the marketing of an asking rate or the contract rate	\$12.77 PRSF (Est.)*

\*Inclusive of all energy, tax, janitorial and maintenance costs as per head lease

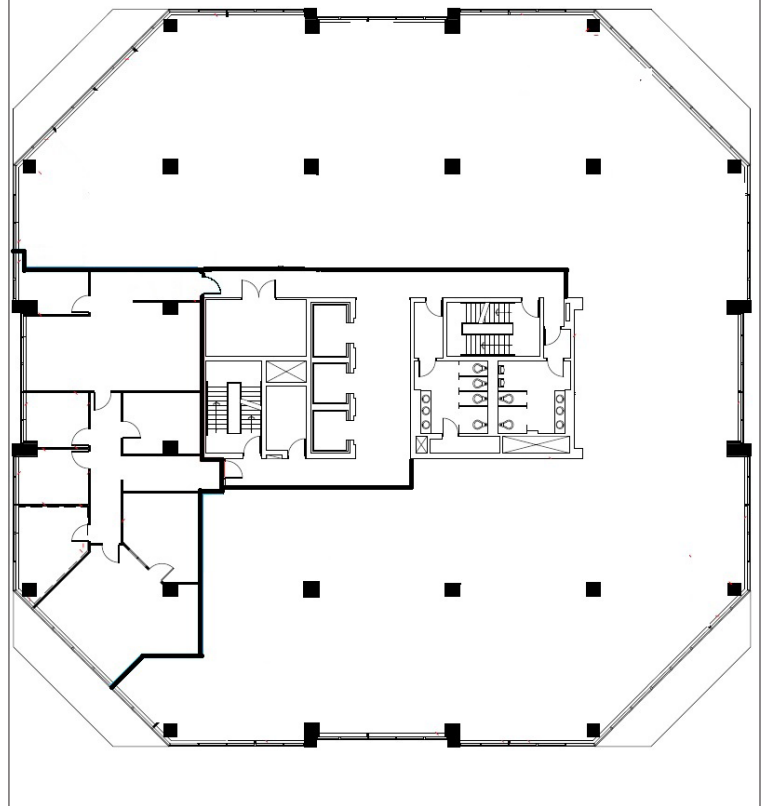
- **Zoning:** DA2 - permits a wide range of uses
- **Parking:** 54 spaces available on-site
- Head-lease expires end of March, 2026
- Quality existing improvements



FLOOR PLAN | SUITE 900



FLOOR PLAN | SUITE 1001



**GEORGE KERHOULAS**

Sales Representative

519 931 2181

george.kerhoulas@cushwakeswo.com

**CUSHMAN & WAKEFIELD**  
 SOUTHWESTERN ONTARIO  
 850 Medway Park Dr, Suite 201  
 London, Ontario N6G 5C6  
 www.cushwakeswo.com

**CUSHMAN & WAKEFIELD**  
 Southwestern Ontario