

1919 BIRCHWOOD AVENUE
TROY, MICHIGAN

INDUSTRIAL/HI-TECH/OFFICE
FOR SALE OR LEASE
9,800 Square Feet Available



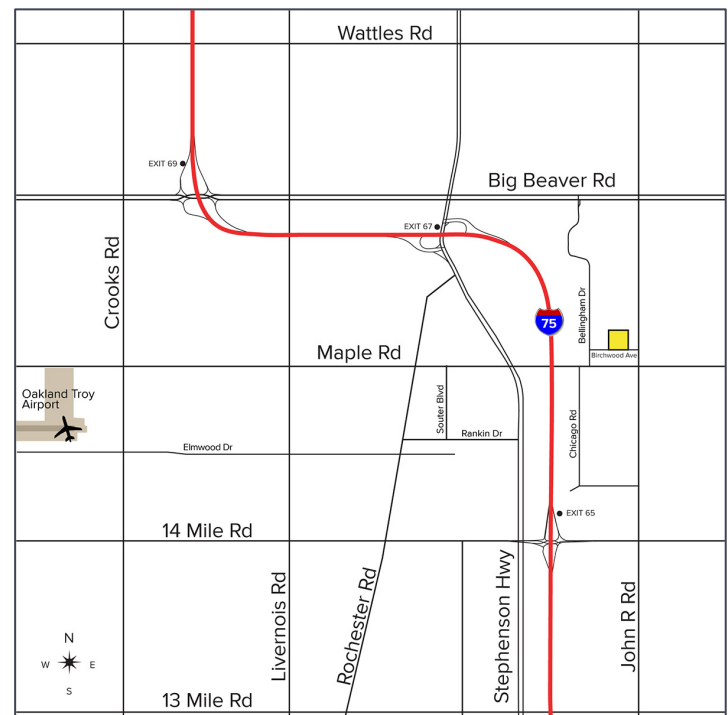
**SIGNATURE
ASSOCIATES**
KNOW SIGNATURE | KNOW RESULTS

CENTRALLY LOCATED IN SOUTH TROY



PROPERTY FEATURES

- 9,800 square feet available
- Attractive brick building with creative space, large storage or testing areas and vehicle storage capability
- First floor has private offices, conference room, kitchen/break room and open area
- Second floor with private entry, elevator access, storage area & open collaborative space
- Perfect space for creative group or even a private owner car garage/gathering place
- (1) 8' x 10' grade level door
- Easy access to all freeways
- Lease Rate: \$12.95/sq. ft. NNN
- Sale Price: \$1,225,000 (\$125.00/sq. ft.)



For more information, please contact:

KRIS PAWLOWSKI
(248) 359 3801

kpawlowski@signatureassociates.com

DAN MORROW
(248) 799 3144

dmorrow@signatureassociates.com

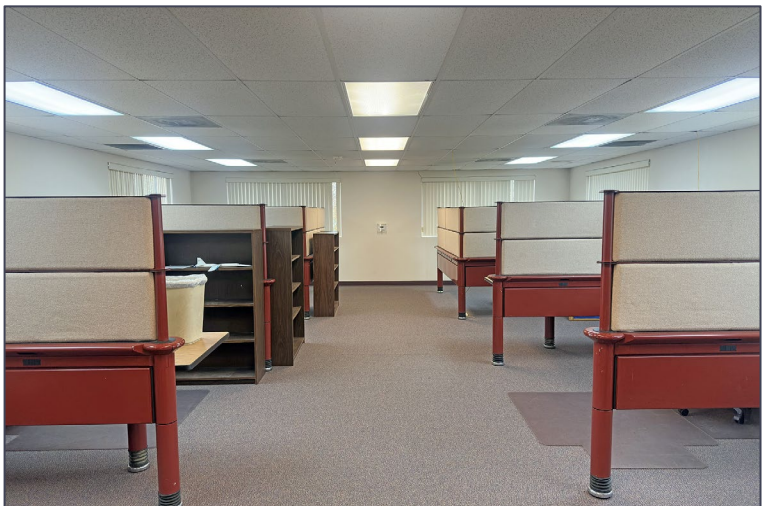
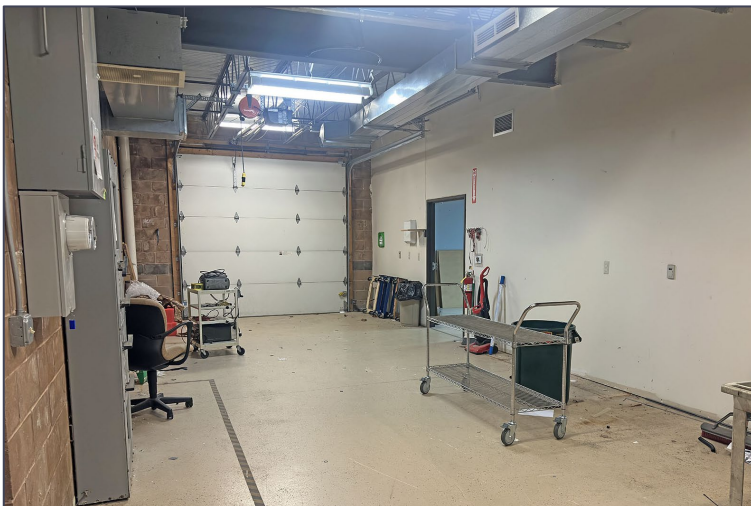
SIGNATURE ASSOCIATES
One Towne Square, Suite 1200
Southfield, MI 48076
www.signatureassociates.com

1919 Birchwood Avenue – Troy, Michigan

Industrial/Hi-Tech/Office For Sale or Lease

9,800
Square Feet
AVAILABLE

Interior Photos



For more information, please contact:

KRIS PAWLOWSKI

(248) 359 3801

kpawlowski@signatureassociates.com

DAN MORROW

(248) 799 3144

dmorrow@signatureassociates.com

SIGNATURE ASSOCIATES

One Towne Square, Suite 1200

Southfield, MI 48076

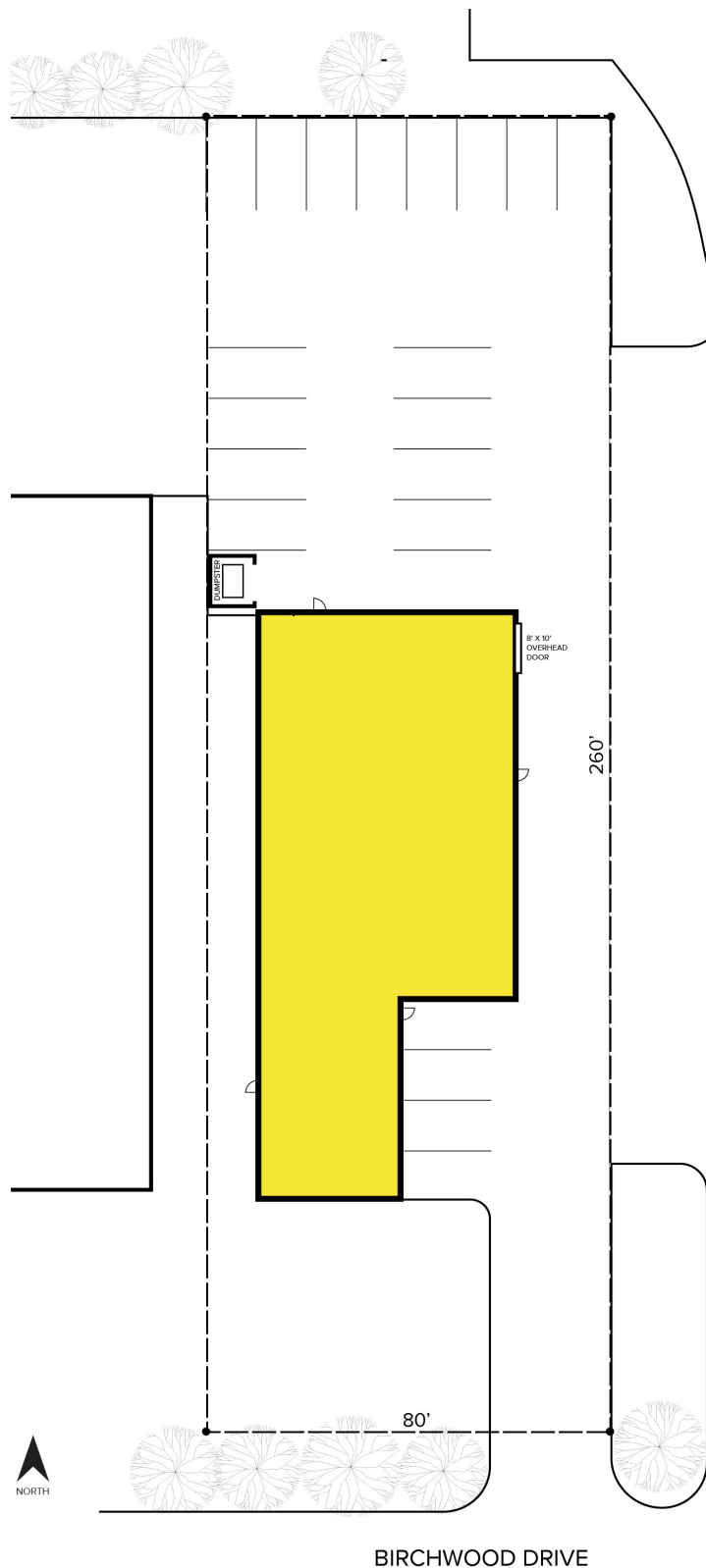
www.signatureassociates.com

1919 Birchwood Avenue – Troy, Michigan

Industrial/Hi-Tech/Office For Sale or Lease

9,800
Square Feet
AVAILABLE

Site Plan



For more information, please contact:

KRIS PAWLOWSKI

(248) 359 3801

kpawlowski@signatureassociates.com

DAN MORROW

(248) 799 3144

dmorrow@signatureassociates.com

SIGNATURE ASSOCIATES

One Towne Square, Suite 1200

Southfield, MI 48076

www.signatureassociates.com

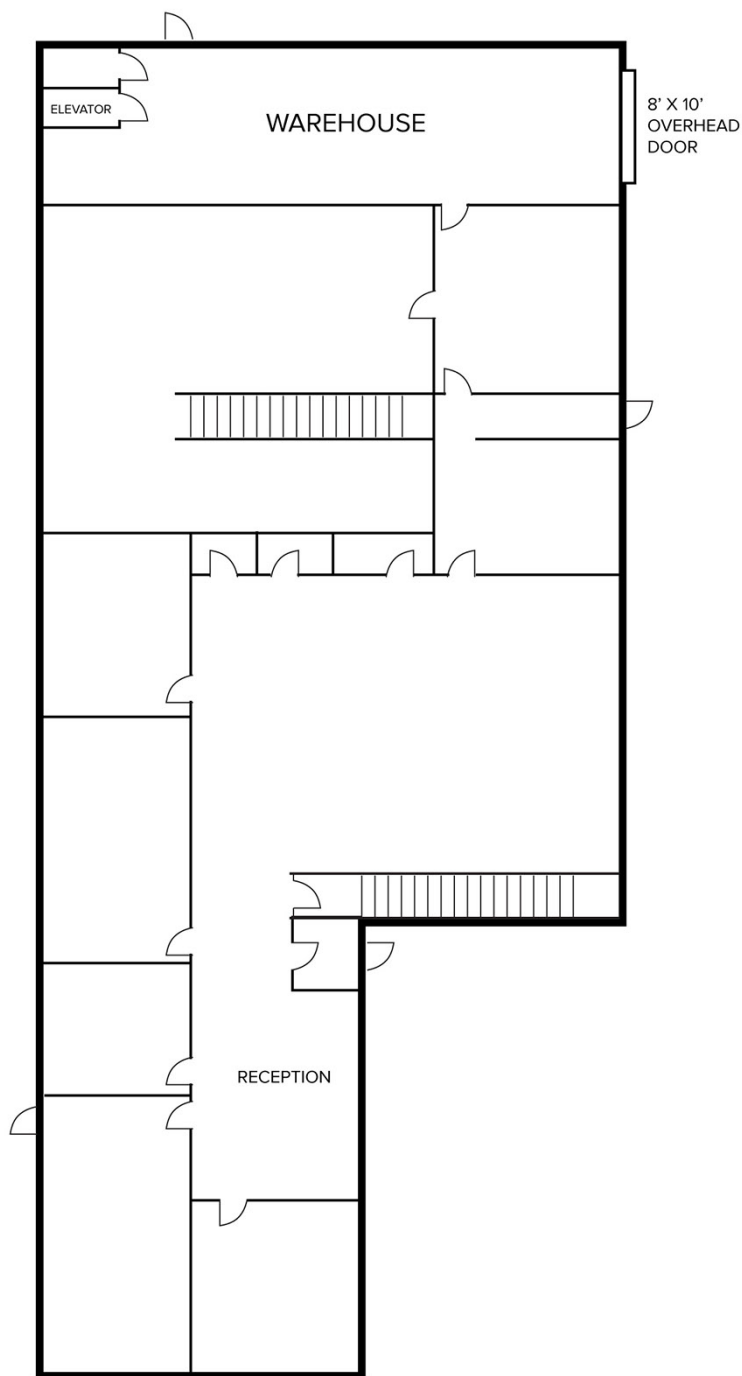
1919 Birchwood Avenue – Troy, Michigan

Industrial/Hi-Tech/Office For Sale or Lease

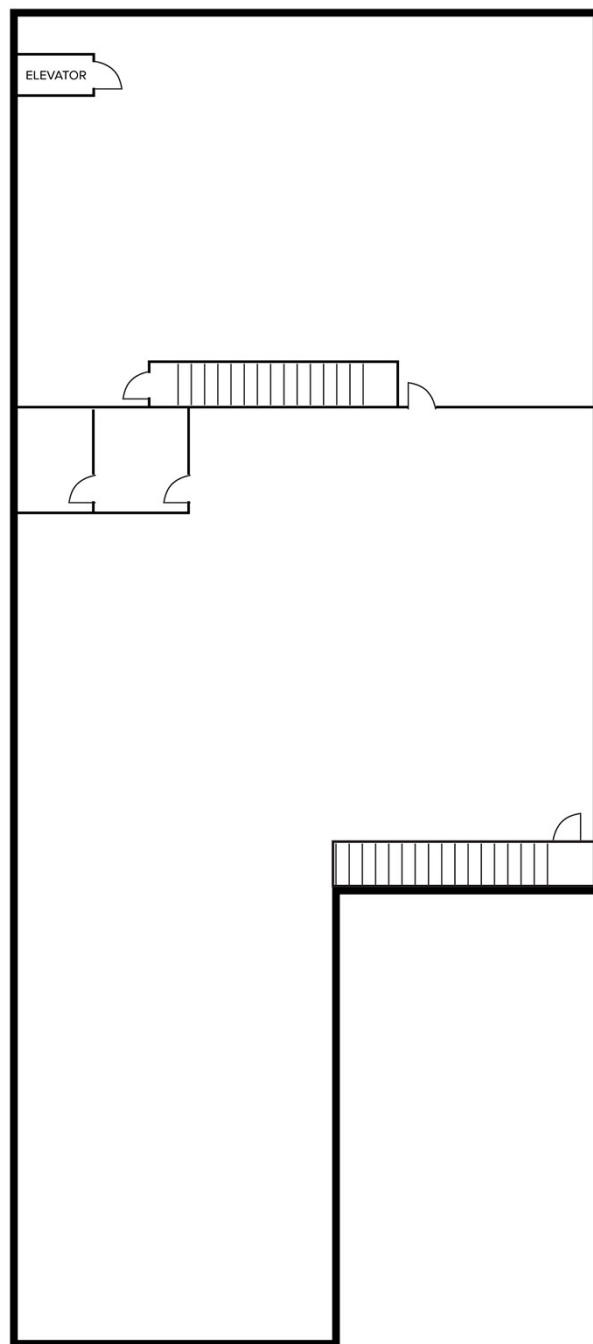
9,800
Square Feet
AVAILABLE

Floor Plan

FIRST FLOOR



SECOND FLOOR



For more information, please contact:

KRIS PAWLOWSKI

(248) 359 3801

kpawlowski@signatureassociates.com

DAN MORROW

(248) 799 3144

dmorrow@signatureassociates.com

SIGNATURE ASSOCIATES

One Towne Square, Suite 1200

Southfield, MI 48076

www.signatureassociates.com

1919 Birchwood Avenue – Troy, Michigan

Industrial/Hi-Tech/Office For Sale or Lease

9,800
Square Feet
AVAILABLE

Aerial



For more information, please contact:

KRIS PAWLOWSKI
(248) 359 3801
kpawlowski@signatureassociates.com

DAN MORROW
(248) 799 3144
dmorrow@signatureassociates.com

SIGNATURE ASSOCIATES
One Towne Square, Suite 1200
Southfield, MI 48076
www.signatureassociates.com