

For Sale | Hwy Commercial Development Site | I-95 & Hwy 327

±0.59 - ±17.89 Acres Available



135 S Dargan St. Suite 301 | Florence, SC 29506 | Phone (843) 667-4999 | www.palmettocommercial.com

No warranty or representation is made as to the accuracy of the information contained herein.



Site Details:

- **Lot Size:** ±0.61 Acres
- Additional Acreage Available
- **Utilities to Site:** Water (Bette Cir) & Sewer (Bette Cir)
- **Ingress/Egress:** N Williston Rd & Bette Cir
- Non exclusive access easement across all neighboring parcels
- **Zoning:** Florence County Commercial Mixed Use
- **Site Condition:** Rough Grade
- **Traffic:** 18,000 Estimated AADT on Hwy 327

Property Overview:

This development site is located off Interstate 95 on North Williston Road (SC Hwy 327). The available parcels offer flexibility to accommodate QSR, hospitality, office, or industrial users. The signalized intersection serves as the entrance to Pee Dee Commerce City, a 705-acre industrial park that is home to many of Florence's most recognizable companies. The location offers easy ingress and egress, along with high visibility to both local and through traffic. Property lines shown are for illustration purposes only and can be adjusted as needed. Please contact us for pricing and additional information.

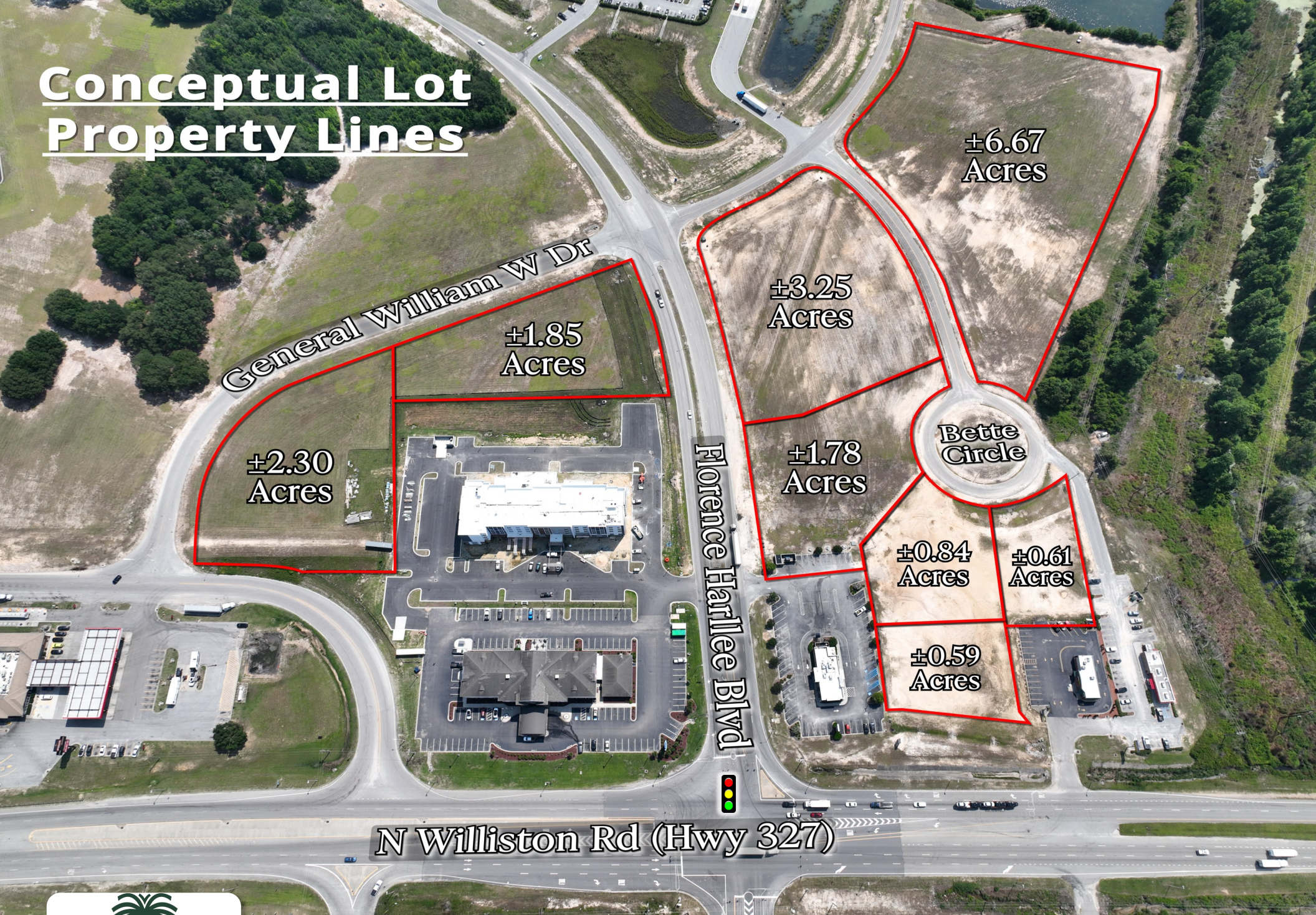
[Property Video-Click Here](#)



135 S Dargan St. Suite 301 | Florence, SC 29506 | Phone (843) 667-4999 | www.palmettocommercial.com

No warranty or representation is made as to the accuracy of the information contained herein.

Conceptual Lot Property Lines



General William W Dr

±2.30
Acres

±1.85
Acres

±3.25
Acres

±6.67
Acres

Florence Harlee Blvd

±1.78
Acres

Bette
Circle

±0.84
Acres

±0.61
Acres

±0.59
Acres

N Williston Rd (Hwy 327)



135 S Dargan St. Suite 301 | Florence, SC 29506 | Phone (843) 667-4999 | www.palmettocommercial.com

No warranty or representation is made as to the accuracy of the information contained herein.