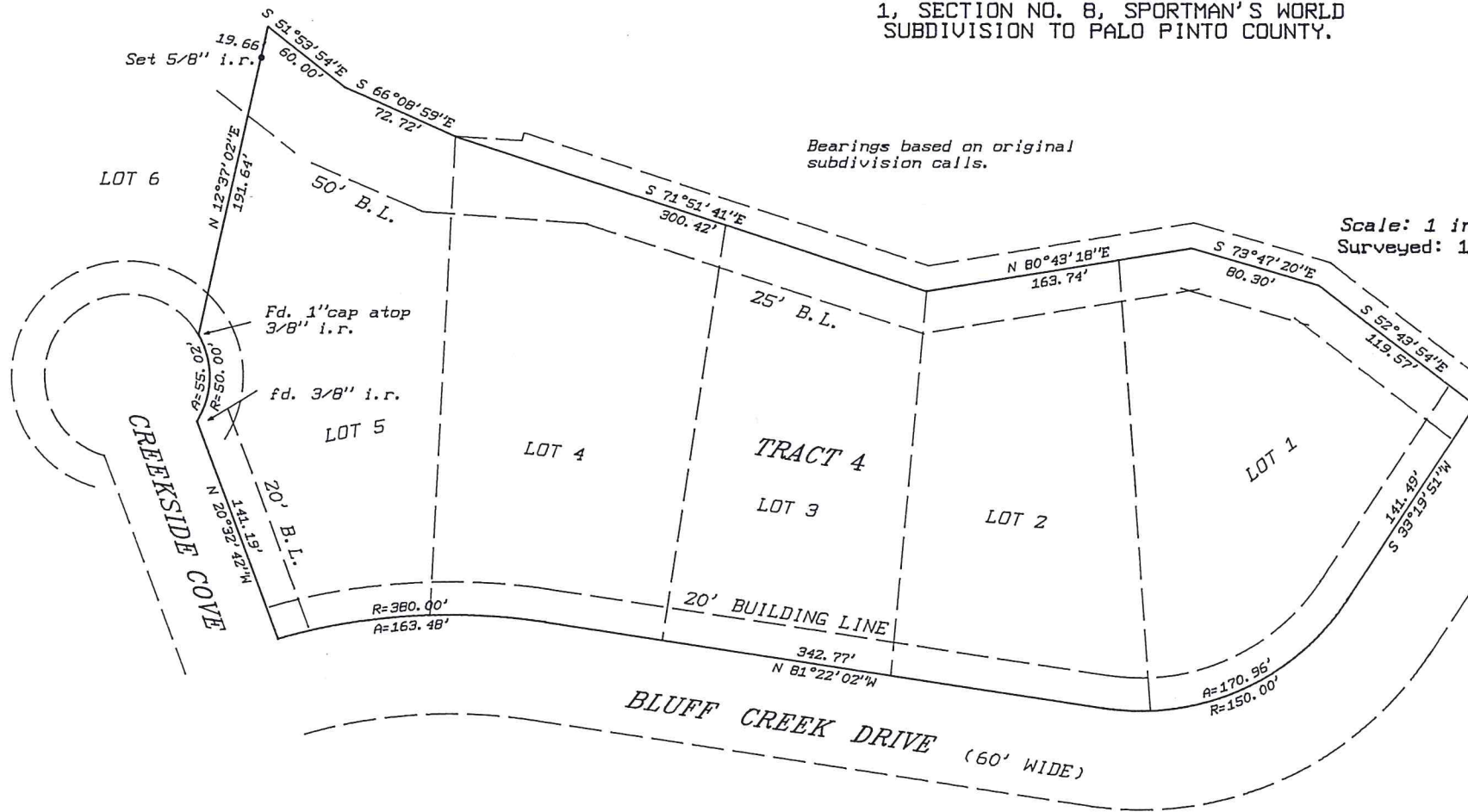


PALO PINTO COUNTY, TEXAS

BOUNDARY SURVEY OF TRACT NO. 4, BLOCK NO. 1, SECTION NO. 8, SPORTMAN'S WORLD SUBDIVISION TO PALO PINTO COUNTY.



Bearings based on original subdivision calls.

Scale: 1 inch = 100 feet
 Surveyed: 11/18/93



Clinton W. Farris