

325

SANTA BELLA
PASO ROBLES, CA

**FOR SALE
OR LEASE**

PROPERTY HIGHLIGHTS:

- +/- 23,070 SF MANUFACTURING BUILDING FOR SALE OR LEASE
- HEAVY POWER: 800 A/ 480 V
- PHOTOVOLTAIC SOLAR SYSTEM
- 3 COVERED DOCK HIGH LOADING POSITIONS WITH LOAD LEVELERS
- NEW LED SHOP LIGHTING

MARTY INDVIK
mindvik@lee-associates.com
D 805.440.6861
CalDRE: #0961882

AUSTIN CAVINESS
acaviness@lee-associates.com
D 530.680.2769
CalDRE: #02237273

 **LEE &
ASSOCIATES**
COMMERCIAL REAL ESTATE SERVICES
CENTRAL CALIFORNIA

All information furnished regarding property for sale, rental or financing is from sources deemed reliable, but no warranty or representation is made to the accuracy thereof and same is submitted to errors, omissions, change of price, rental or other conditions prior to sale, lease or financing or withdrawal without notice. No liability of any kind is to be imposed on the broker herein.

PROPERTY OVERVIEW

This property features a well-maintained metal clad building with insulated walls and ceilings, and skylights throughout to ensure ample natural light. The building is ideal for a variety of commercial and industrial uses, with functional features designed to support both manufacturing and office space needs. Built in 1992.

OFFERING PRICE

\$4,200,000 | \$182 per sq.ft.

AVAILABLE SF

±23,070 sq. ft.

LEASE RATE & TERMS

\$0.85/SF NNN | Negotiable

LEASE SPACE AVAILABLE:

±9,000 SF to ±23,070 SF

LOT SIZE

±0.99 acres (±43,186 sq. ft.)

ZONING

PM - Planned Manufacturing

APN

009-314-027

PROPERTY HIGHLIGHTS

- Clear-Span Design: Offers an open and flexible layout ideal for various business types
- Versatile Use: Perfect for manufacturing and warehousing
- User-Friendly Access: Three loading dock bays and three roll-up doors for easy access. Seven total roll up doors
- Well-Maintained: The building has been meticulously cared for, with recent upgrades like LED lighting, and energy-efficient features



MARTY INDVIK
mindvik@lee-associates.com
D 805.440.6861
CalDRE: #0961882

AUSTIN CAVINESS
acaviness@lee-associates.com
D 530.680.2769
CalDRE: #02237273

 **LEE & ASSOCIATES**
COMMERCIAL REAL ESTATE SERVICES
CENTRAL CALIFORNIA

All information furnished regarding property for sale, rental or financing is from sources deemed reliable, but no warranty or representation is made to the accuracy thereof and same is submitted to errors, omissions, change of price, rental or other conditions prior to sale, lease or financing or withdrawal without notice. No liability of any kind is to be imposed on the broker herein.

KEY FEATURES:

WAREHOUSE & MANUFACTURING SPACE:

- Total Warehouse Size: ±18,655 sq. ft.
- Manufacturing Area: ±1,530 sq. ft.
- Warehouse Ceiling Heights: 16' to 20'
- New LED Shop Lighting installed for enhanced visibility and energy efficiency
- Fully Sprinklered
- Ground-Level Loading: Accessible on three sides of the building
- Three Covered Dock-High Loading Positions with load levelers at the rear of the property
- Dry grinding/welding room

OFFICE & SHOWROOM SPACE:

- Showroom Area: ±1,595 sq. ft.
- Ground-Level Office Space: ±570 sq. ft.
- Mezzanine-Level Office & Storage:
 - Upstairs Office Space: ±570 sq. ft.
 - Large Administrative Office and Retail Showroom
- Two Restrooms for convenience
- Break Room for employees

ENERGY EFFICIENCY & SUSTAINABILITY:

- Photovoltaic Solar System: Installed by Solorponics in 2015, additional panels added in 2018 for energy savings

UTILITIES & POWER:

- Three-Phase Power
- Space Heater and conditioned office spaces
- High Power Capacity suitable for industrial uses

ADDITIONAL PROPERTY FEATURES:

- Parking & Driveway: Slurry-coated in 2020

FLOOR BREAKDOWN

First Floor:

- Warehouse: ±18,655 sq. ft.
- Office: ±570 sq. ft.
- Restroom (R/R): ±150 sq. ft.
- Showroom: ±1,595 sq. ft.
- Manufacturing: ±1,530 sq. ft.

Second Floor:

- Office Space: ±570 sq. ft.

INVESTMENT POTENTIAL:

This building is ideally located in Paso Robles' commercial manufacturing district, making it an attractive option for companies looking for a functional, well-equipped space. Its energy-efficient features and versatile design provide long-term value and can accommodate a variety of industries.

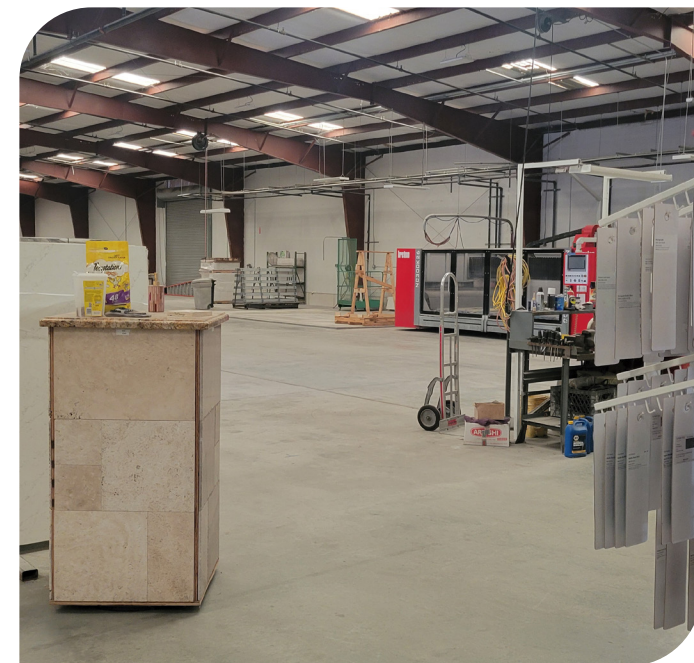
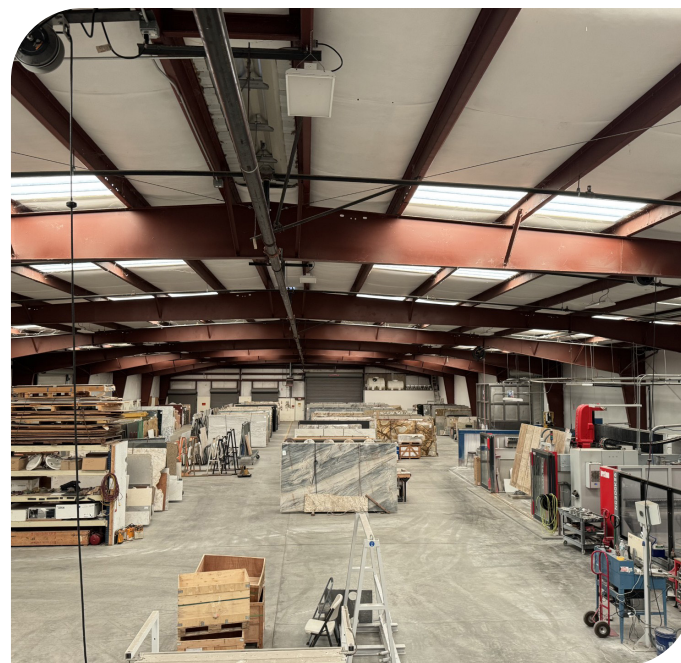
Additional Information:

- All information is deemed reliable, but buyers are encouraged to conduct their own due diligence.
- For more details on purchasing the existing business or to schedule a tour, please contact the listing agents.



All information furnished regarding property for sale, rental or financing is from sources deemed reliable, but no warranty or representation is made to the accuracy thereof and same is submitted to errors, omissions, change of price, rental or other conditions prior to sale, lease or financing or withdrawal without notice. No liability of any kind is to be imposed on the broker herein.

PROPERTY IMAGES

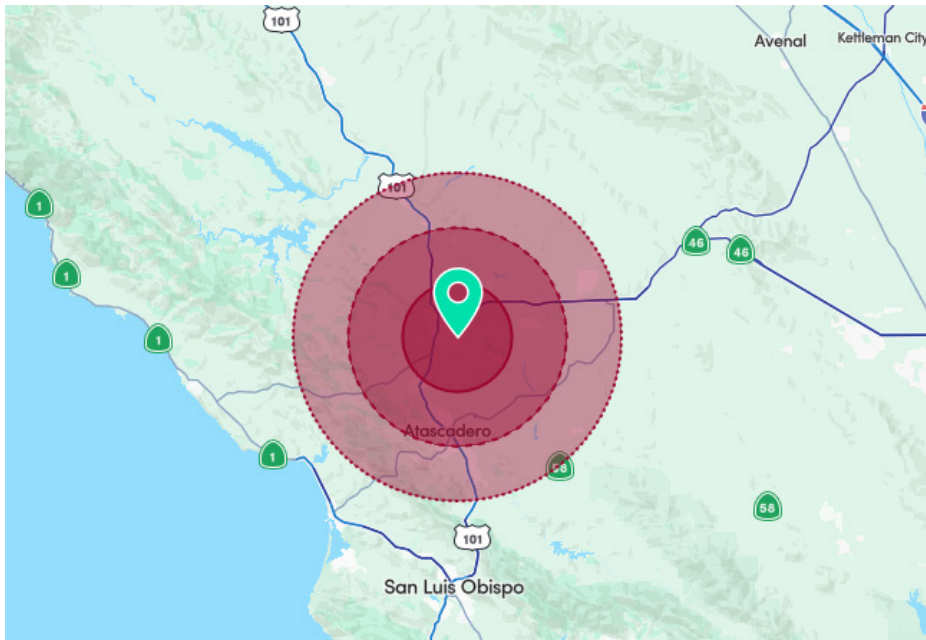


All information furnished regarding property for sale, rental or financing is from sources deemed reliable, but no warranty or representation is made to the accuracy thereof and same is submitted to errors, omissions, change of price, rental or other conditions prior to sale, lease or financing or withdrawal without notice. No liability of any kind is to be imposed on the broker herein.

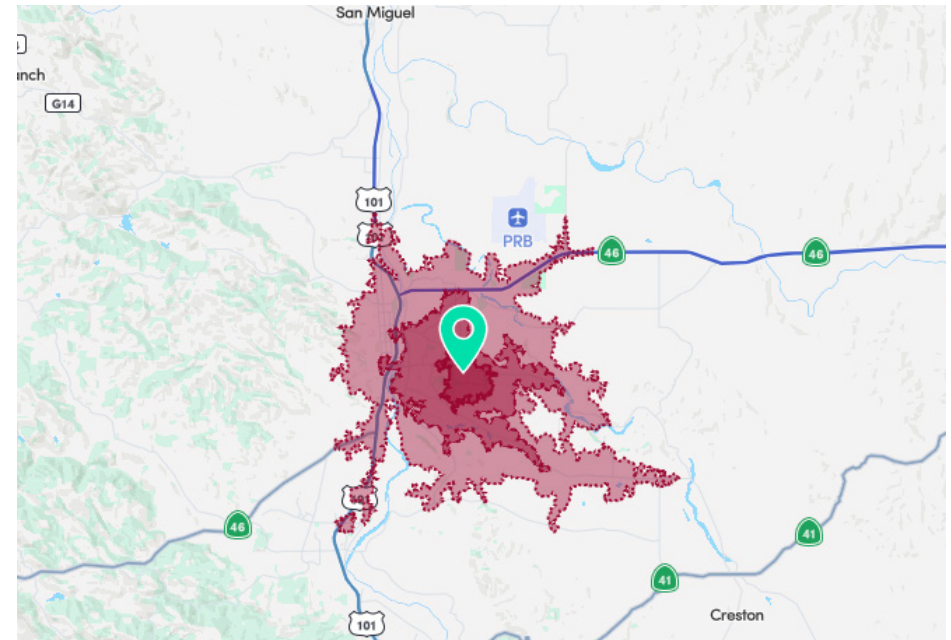
DEMOGRAPHICS

DEMOGRAPHICS	5 MILE	10 MILES	15 MILES
POPULATION			
Total Population	41,001	71,983	96,877
Average Age	42	42	42
Average Age (Male)	40	41	41
Average Age (Female)	43	43	43
HOUSEHOLDS & INCOME			
Total Households	15,208	26,919	36,298
# of Persons per HH	2.7	2.7	2.7
Average HH Income	\$117,095	\$125,652	\$123,047
Average House Value	\$777,386	\$794,828	\$788,079

RADIUS MAP



DRIVE TIME MAP



Demographic Data derived from AlphaMap

All information furnished regarding property for sale, rental or financing is from sources deemed reliable, but no warranty or representation is made to the accuracy thereof and same is submitted to errors, omissions, change of price, rental or other conditions prior to sale, lease or financing or withdrawal without notice. No liability of any kind is to be imposed on the broker herein.



COMMERCIAL REAL ESTATE SERVICES

LOCAL EXPERTISE. INTERNATIONAL REACH. WORLD CLASS.

Lee & Associates, the largest broker-owned firm in North America, has been providing seamless, consistent execution and value-driven market-to-market services for our clients since 1979.

Our real estate services are tailored to exceed the needs of our local, national, and international clients by combining the latest technology, resources, and market intelligence with over 40 years of expertise to optimize results.

MARTY INDVIK

805.440.6861

mindvik@lee-associates.com

CalDRE: #0961882

AUSTIN CAVINESS

530.680.2769

acaviness@lee-associates.com

CalDRE: #02237273

Central California, Inc. -
Lee & Associates
Corporate ID #02215506
A Member of the Lee & Associates
Group of Companies
5401 Business Park South, Suite 122 & 123
Bakersfield, CA 93309
www.lee-associates.com/centralca

All information furnished regarding property for sale, rental or financing is from sources deemed reliable, but no warranty or representation is made to the accuracy thereof and same is submitted to errors, omissions, change of price, rental or other conditions prior to sale, lease or financing or withdrawal without notice. No liability of any kind is to be imposed on the broker herein.

