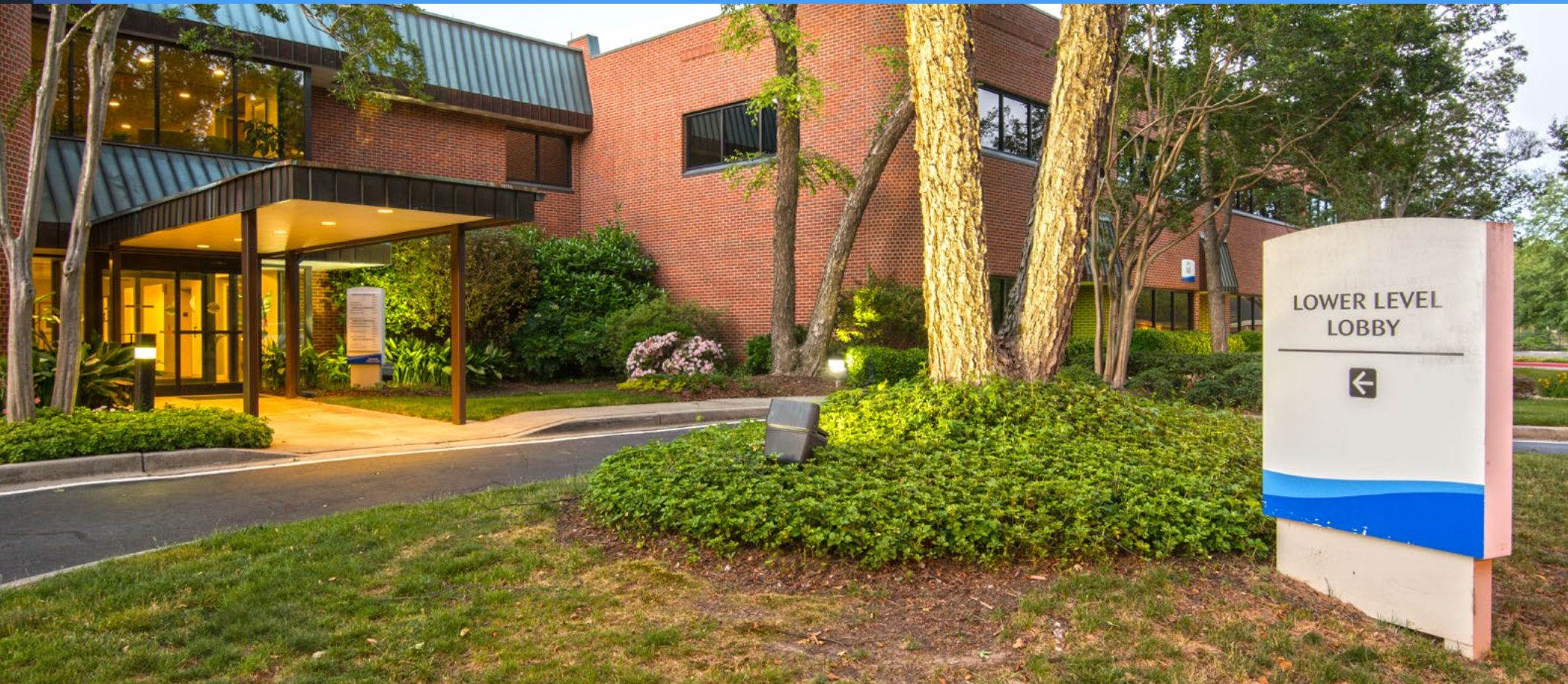


# MEDICAL & HEALTHCARE OFFICE SPACE FOR LEASE



## EASTSIDE Medical Center

10 ENTERPRISE BLVD | GREENVILLE, SOUTH CAROLINA



GRAYSON BURGESS, CCIM, SIOR  
GBURGESS@TRINITY-PARTNERS.COM  
864.770.3288



EDWARD WILSON, CCIM, SIOR, MCR  
MANAGING PARTNER  
803.528.3574  
EWILSON@TRINITY-PARTNERS.COM

TRINITY  
PARTNERS

OWNED BY

Remedy 



## AVAILABILITIES

**SUITE 108: 1,634 RSF**

**SUITE 207: 3,297 RSF**

[CLICK TO TOUR BUILDING  
COMMON AREAS](#) 

## EASTSIDE MEDICAL CENTER

One block from Prisma Health  
Patewood Campus and Bon  
Secours Francis Eastside

## CURRENT TENANTS INCLUDE

Pediatric Care, Advanced  
Eyecare of the Upstate, CCAMP  
Physical Therapy, Blue Mountain  
Diagnostics, Midtown Primary  
Care, Carolina Dermatology,  
Clemson Eye, American  
Orthopedics, Midtown Primary  
Care, Pisgah Eye Solutions, and  
Blue Cloud Surgery Center

**RENOVATED COMMON AREAS**

**EXTERIOR SIGNAGE AVAILABLE**





# LOCATION

EASTSIDE

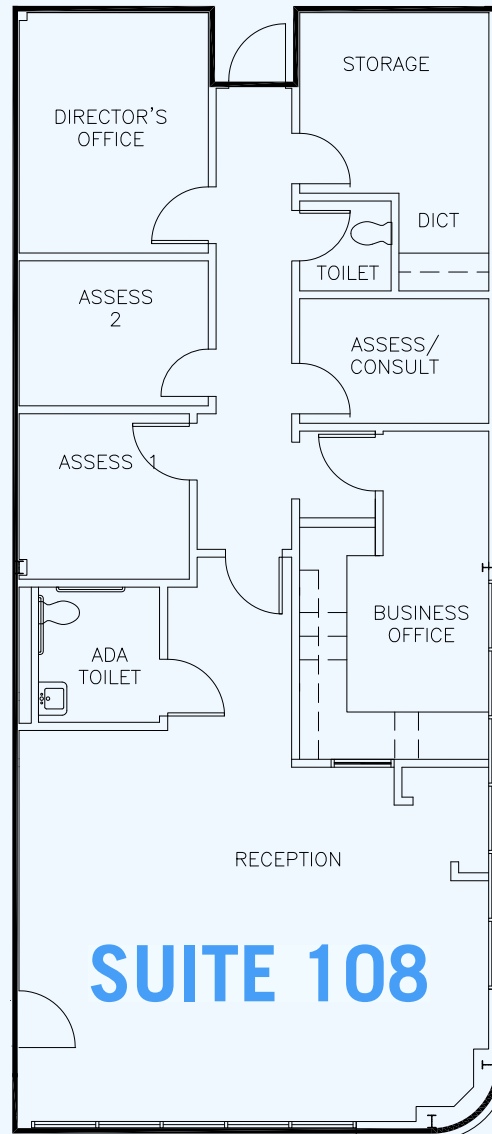
10 ENTERPRISE BLVD  
GREENVILLE, SOUTH CAROLINA

# Medical Center

SUITE 108

1,634 RSF

AVAILABLE NOW



[CLICK TO TOUR](#)

EASTSIDE

10 ENTERPRISE BLVD  
GREENVILLE, SOUTH CAROLINA

# Medical Center

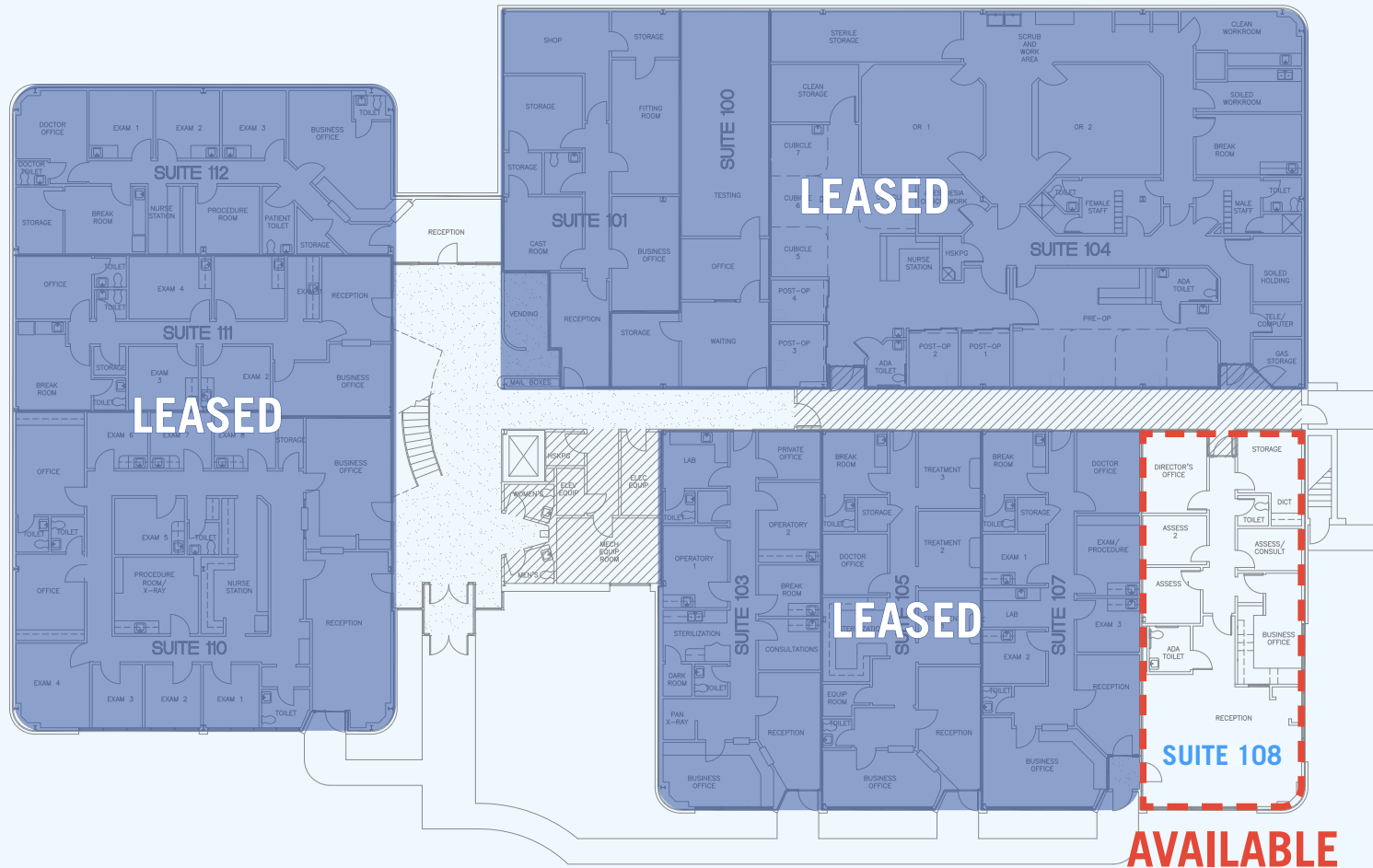
SUITE 108

1,634 RSF

AVAILABLE NOW

ENTERPRISE BLVD

BRENDAN WAY



EASTSIDE

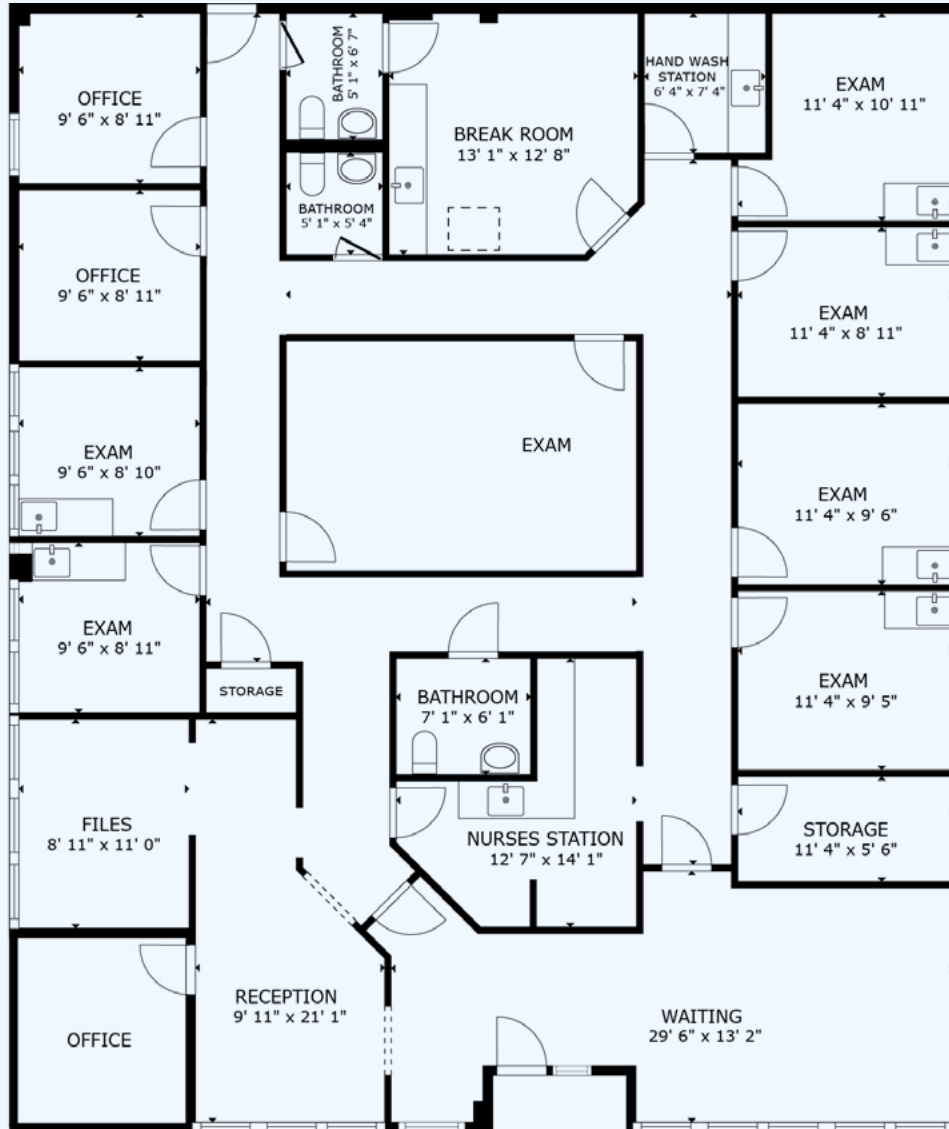
10 ENTERPRISE BLVD  
GREENVILLE, SOUTH CAROLINA

# Medical Center

SUITE 207

3,297 RSF

AVAILABLE NOW



[CLICK TO TOUR](#)

EASTSIDE

10 ENTERPRISE BLVD  
GREENVILLE, SOUTH CAROLINA

# Medical Center

SUITE 207

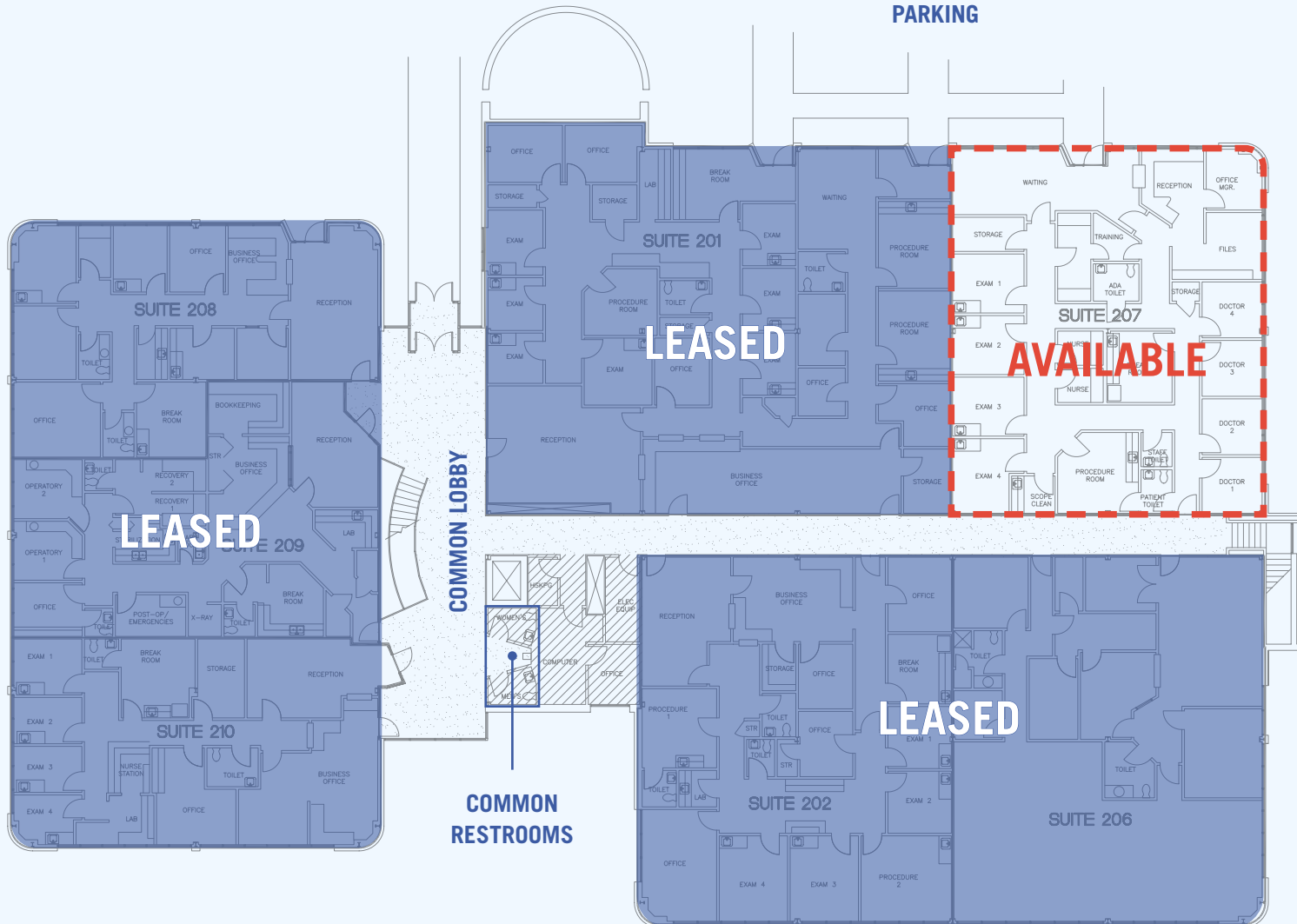
3,297 RSF

AVAILABLE NOW

ENTERPRISE BLVD

PARKING

BRENDAN WAY



EASTSIDE

# Medical Center

10 ENTERPRISE BLVD  
GREENVILLE, SOUTH CAROLINA

OWNED BY

Remedy 

FOR MORE INFORMATION CONTACT



GRAYSON BURGESS, CCIM, SIOR  
GBURGESS@TRINITY-PARTNERS.COM  
864.770.3288



EDWARD WILSON, CCIM, SIOR, MCR  
MANAGING PARTNER  
803.528.3574  
EWILSON@TRINITY-PARTNERS.COM

TRINITY  
PARTNERS