

Medical Office | For Lease

CBRE

# NCCMC - Lakewood Crossing

22485 Tomball Parkway, Houston, TX 77377

[www.cbre.com/properties](http://www.cbre.com/properties)

Full Building Available – Up to 32,270 RSF



Building owned and managed by  
**HEALTHCARE REALTY**



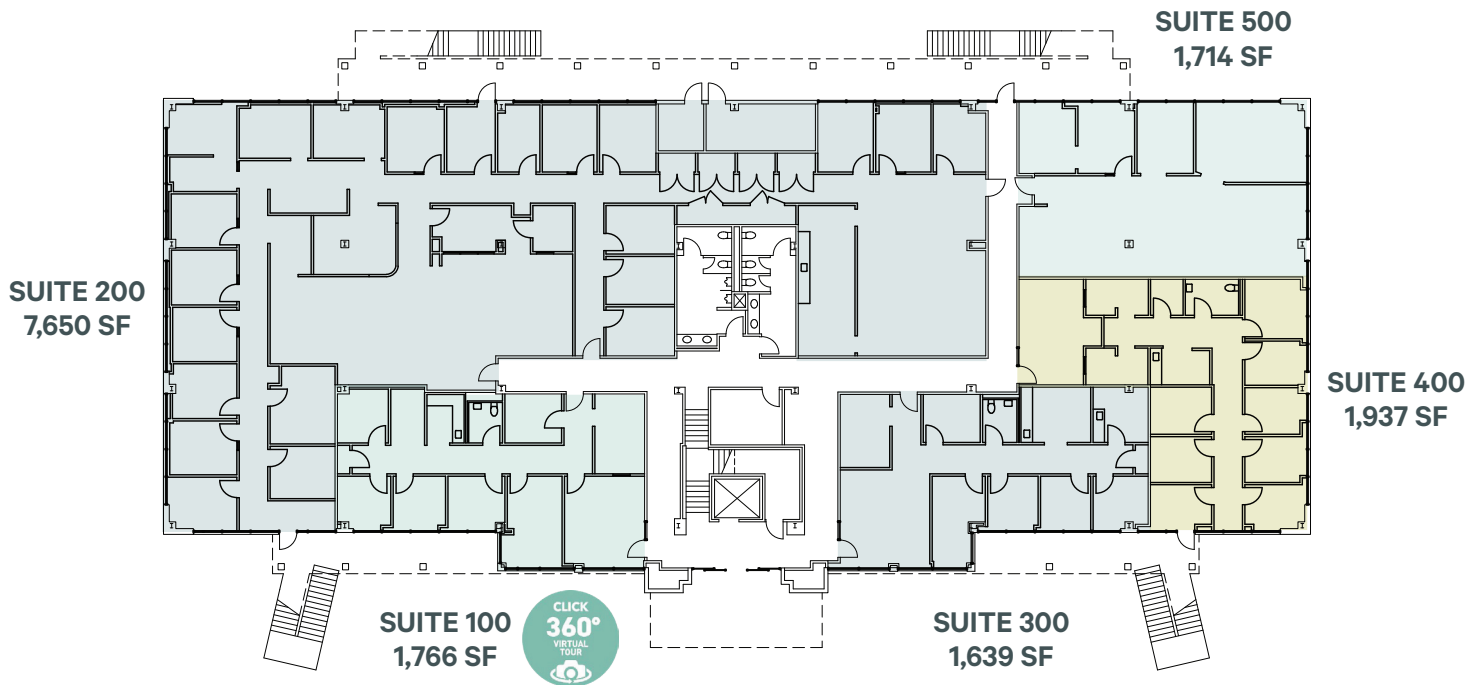
## Property Highlights

- + Easy access to State Highway 249
- + Located 2 miles from St. Luke's Health - The Vintage Hospital
- + Located 5 miles from Houston Methodist Willowbrook Hospital
- + Close proximity to numerous restaurant and retail amenities

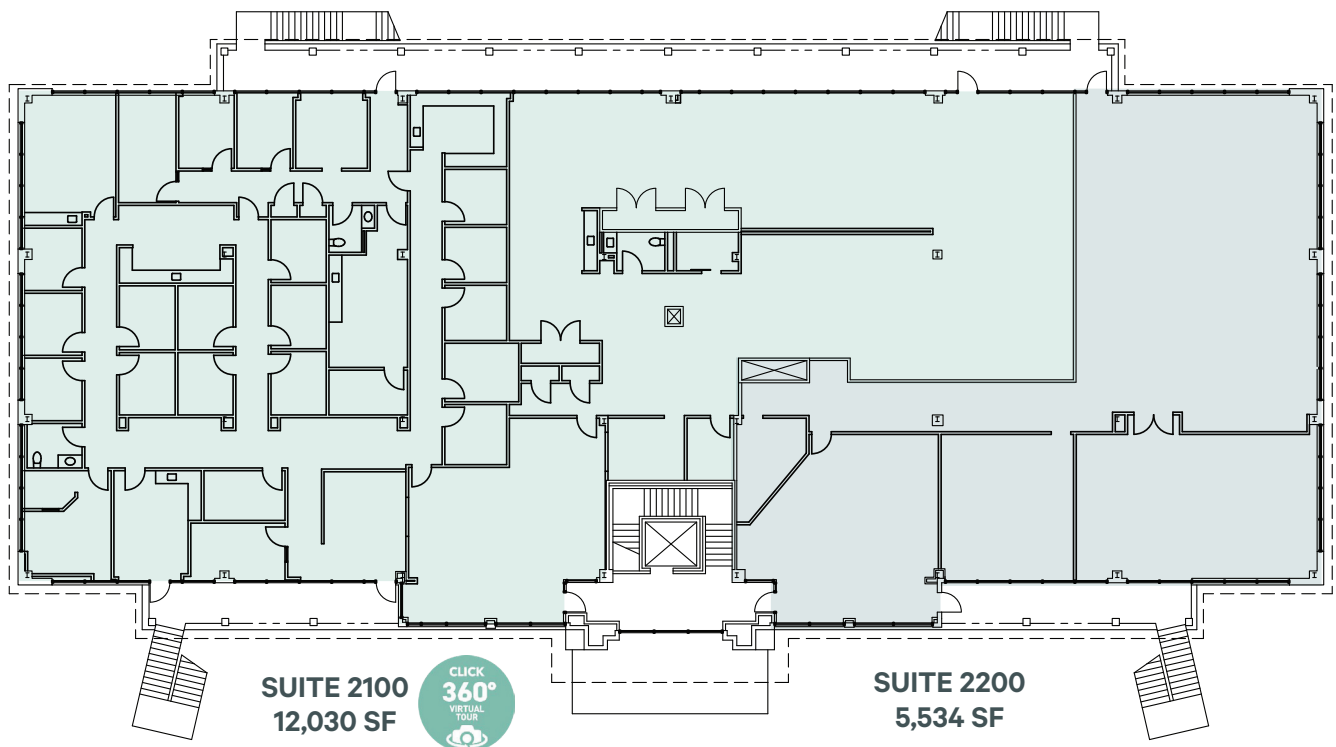
## Demographics

	1 MILE	3 MILES	5 MILES
Population - Estimated 2024	8,462	111,354	253,465
Population - 5-Year Projection	8,487	113,114	257,632
Median Age - Estimated 2024	39.2	37.8	37.5
Average Household Income - Estimated 2024	\$131,182	\$138,903	\$133,525

1st Floor - 14,706 SF



2nd Floor - 17,564 SF



# NCMC - LAKEWOOD CROSSING

22485 Tomball Parkway, Houston, TX 77377

For Lease



## Contact Us

### Angela Barber

Vice President

+1 832 455 6945

angela.barber@cbre.com

### Brandy Bellow Spinks

Executive Vice President

+1 713 726 6100

brandy.bellow@cbre.com

### Pamela Sprouse

Vice President

+1 832 335 0277

pamela.sprouse@cbre.com

Building owned and managed by

**HEALTHCARE REALTY**

© 2025 CBRE, Inc. All rights reserved. This information has been obtained from sources believed reliable, but has not been verified for accuracy or completeness. You should conduct a careful, independent investigation of the property and verify all information. Any reliance on this information is solely at your own risk. CBRE and the CBRE logo are service marks of CBRE, Inc. All other marks displayed on this document are the property of their respective owners, and the use of such logos does not imply any affiliation with or endorsement of CBRE. Photos herein are the property of their respective owners. Use of these images without the express written consent of the owner is prohibited.

[www.cbre.com/properties](http://www.cbre.com/properties)

**CBRE**