



## 1418 7th St

Santa Monica, California 90401

### Property Highlights

- 2nd generation dental office (no furniture or equipment included)
- Downtown Santa Monica
- Close proximity to 3rd Street Promenade
- Potential for prominent signage
- Within walking distance of many restaurants and other amenities
- Excellent demographics
- Ample covered parking for employees
- Easy access to the Santa Monica (10) Freeway

### Suite 102 Description

Three operatories, laboratory, reception/waiting area, kitchen, private bathroom, storage/IT room

### Offering Summary

Lease Rate:	\$4.50 SF/month (NNN)
Available SF:	872 SF
Parking:	3 Spaces @ \$175/month

Demographics	1 Mile	3 Miles	5 Miles
Total Households	21,805	88,112	205,351
Total Population	38,667	175,162	444,008
Average HH Income	\$149,036	\$172,174	\$166,395

### For More Information

**Joseph Gabbaian**

O: 310 806 6134

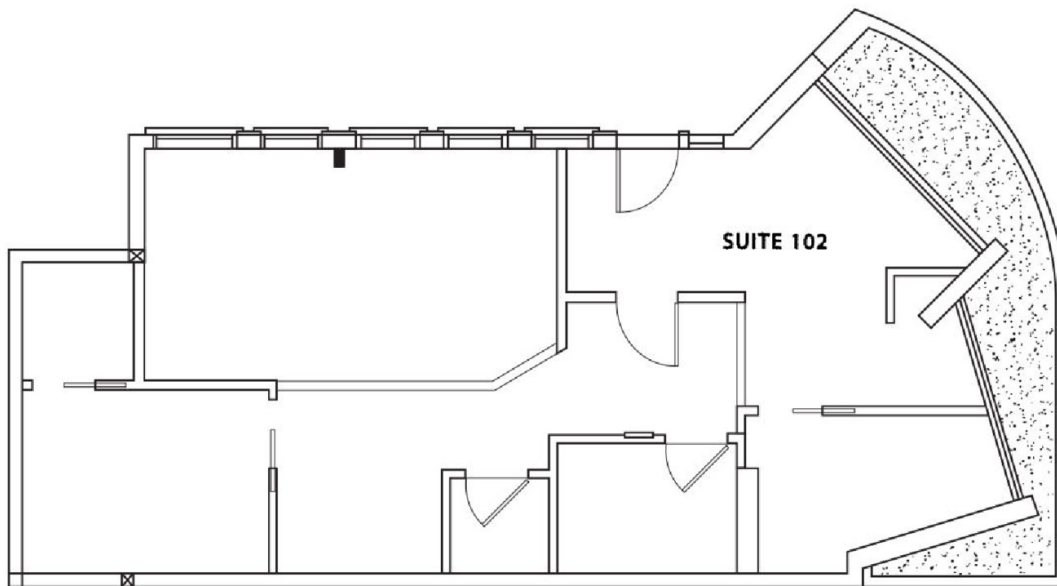
[jgabbaian@naicapital.com](mailto:jgabbaian@naicapital.com) | CalDRE #01016301

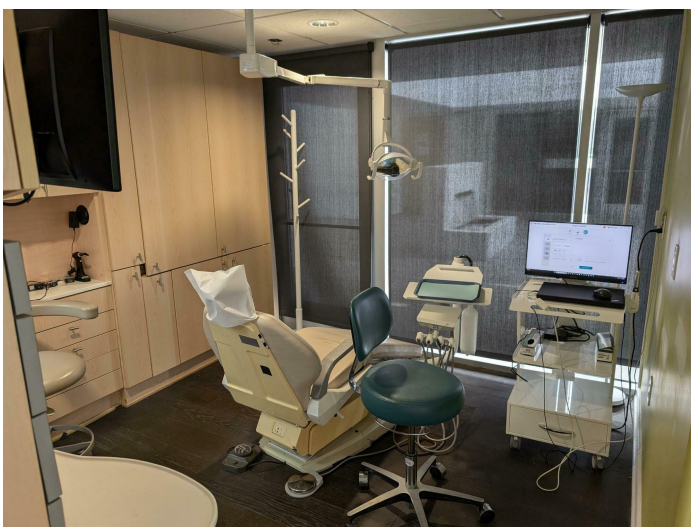
For Lease

872 SF | \$4.50 SF/month

2nd Generation Dental Office

**1418 7th Street  
Suite 102  
Floor Plan**





No warranty, express or implied, is made as to the accuracy of the information contained herein. This information is submitted subject to errors, omissions, change of price, rental or other conditions, withdrawal without notice, and is subject to any special listing conditions imposed by our principals. Cooperating brokers, buyers, tenants and other parties who receive this document should not rely on it, but should use it as a starting point of analysis, and should independently confirm the accuracy of the information contained herein through a due diligence review of the books, records, files and documents that constitute reliable sources of the information described herein. Logos are for identification purposes only and may be trademarks of their respective companies. NAI Capital Commercial, Inc. CAL DRE Lic. #02130474

11150 Santa Monica Blvd., Suite 1550  
Los Angeles, CA 90025  
310 806 6100 tel  
naicapital.com

For Lease

872 SF | \$4.50 SF/month

2nd Generation Dental Space



No warranty, express or implied, is made as to the accuracy of the information contained herein. This information is submitted subject to errors, omissions, change of price, rental or other conditions, withdrawal without notice, and is subject to any special listing conditions imposed by our principals. Cooperating brokers, buyers, tenants and other parties who receive this document should not rely on it, but should use it as a starting point of analysis, and should independently confirm the accuracy of the information contained herein through a due diligence review of the books, records, files and documents that constitute reliable sources of the information described herein. Logos are for identification purposes only and may be trademarks of their respective companies. NAI Capital Commercial, Inc. CAL DRE Lic. #02130474

11150 Santa Monica Blvd., Suite 1550  
Los Angeles, CA 90025  
310 806 6100 tel  
naicapital.com