

FOR SALE: 3121 Bailey Drive Unit 120, Fort Worth, TX 76177



GeoDwell  
COMMERCIAL REAL ESTATE SERVICES



FOR SALE

## Modern Office/Medical Condo

KELLER WILLIAMS REALTY  
2106 E. ST HWY 114 SOUTHLAKE, TEXAS 76092



VISIT [GeoDwellCommercial.com](http://GeoDwellCommercial.com)



Michelle Rawls  
(817) 715-5222  
[michelle@geoDWELL.com](mailto:michelle@geoDWELL.com)



Kevin Alexander  
(817) 899-5493  
[kevin@geoDWELL.com](mailto:kevin@geoDWELL.com)

Contact:

GeoDWELL COMMERCIAL REAL ESTATE GROUP // 2106 E State Highway 114, Suite 2240, Southlake, TX 76092 // (682) 235-4GEO // [www.geoDWELL.com](http://www.geoDWELL.com)

NOTICE & DISCLAIMER: The enclosed information is from sources believed to be reliable, but GeoDwell and Keller Williams Realty have not verified the accuracy of the information. GeoDwell and Keller Williams Realty make no guarantee, warranty or representation as to the information, and assumes no responsibility for any error, omission or inaccuracy. The information is subject to the possibility of errors, omissions, changes of condition, including price or rental, or withdrawal without notice. Any projections, assumptions or estimates are for illustrative purposes only. Recipients should conduct their own investigation.

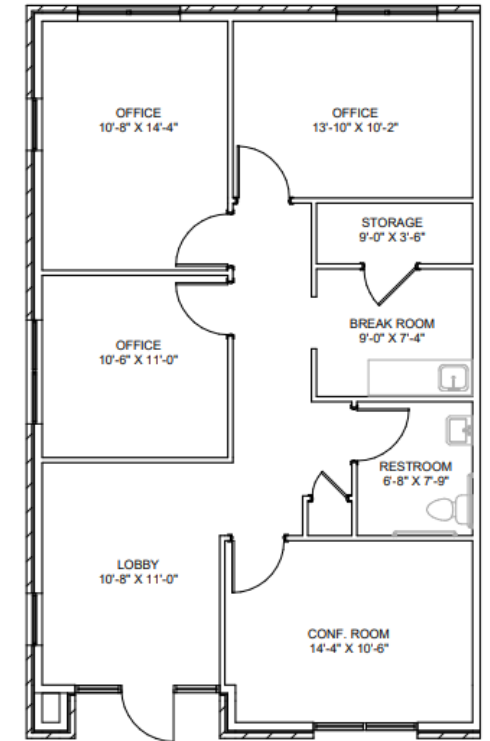


# Property Highlights:

- 1,153 SF
- 3 Offices, Reception Area, Break Room, Conference Room and Restroom
- Zoned- Intensive Commercial
- Built 2025
- Modern Finishes
- Ample Parking

## Modern Office/Medical Condo For Sale

3121 Bailey Drive Unit 120, Fort Worth, TX 76177



01 TYPICAL FLOOR PLAN TYPE A - 1,153 SF  
SCALE: 1/8" = 1'-0"

FOR BUILDINGS - 3117, 3121, 3129, 3133, 3141, 3145, 3153, 3157, 3165, 3169

### Floor Plan



**Michelle Rawls**  
Director  
817.715.5222  
[michelle@geoDWELL.com](mailto:michelle@geoDWELL.com)

**Kevin Alexander**  
Associate  
817.899.5493  
[kevin@geoDWELL.com](mailto:kevin@geoDWELL.com)



GeoDWELL COMMERCIAL REAL ESTATE GROUP // 2106 E State Highway 114, Suite 2240, Southlake, TX 76092 // (682) 235-4GEO // [www.geoDWELL.com](http://www.geoDWELL.com)

NOTICE & DISCLAIMER: The enclosed information is from sources believed to be reliable, but GeoDwell and Keller Williams Realty have not verified the accuracy of the information. GeoDwell and Keller Williams Realty make no guarantee, warranty or representation as to the information, and assumes no responsibility for any error, omission or inaccuracy. The information is subject to the possibility of errors, omissions, changes of condition, including price or rental, or withdrawal without notice. Any projections, assumptions or estimates are for illustrative purposes only. Recipients should conduct their own investigation.



# Modern Office/Medical Condo For Sale

3121 Bailey Drive Unit 120, Fort Worth, TX 76177



**Michelle Rawls**  
Director  
817.715.5222  
[michelle@geoDWELL.com](mailto:michelle@geoDWELL.com)

**Kevin Alexander**  
Associate  
817.899.5493  
[kevin@geoDWELL.com](mailto:kevin@geoDWELL.com)



GeoDWELL COMMERCIAL REAL ESTATE GROUP

//

2106 E State Highway 114, Suite 2240, Southlake, TX 76092

//

(682) 235-4GEO

//

[www.geoDWELL.com](http://www.geoDWELL.com)

NOTICE & DISCLAIMER: The enclosed information is from sources believed to be reliable, but GeoDwell and Keller Williams Realty have not verified the accuracy of the information. GeoDwell and Keller Williams Realty make no guarantee, warranty or representation as to the information, and assumes no responsibility for any error, omission or inaccuracy. The information is subject to the possibility of errors, omissions, changes of condition, including price or rental, or withdrawal without notice. Any projections, assumptions or estimates are for illustrative purposes only. Recipients should conduct their own investigation.

# Modern Office/Medical Condo For Sale

3121 Bailey Drive Unit 120, Fort Worth, TX 76177



**Michelle Rawls**  
Director  
817.715.5222  
[michelle@geoDWELL.com](mailto:michelle@geoDWELL.com)

**Kevin Alexander**  
Associate  
817.899.5493  
[kevin@geoDWELL.com](mailto:kevin@geoDWELL.com)



GeoDWELL COMMERCIAL REAL ESTATE GROUP



2106 E State Highway 114, Suite 2240, Southlake, TX 76092



(682) 235-4GEO



[www.geoDWELL.com](http://www.geoDWELL.com)

NOTICE & DISCLAIMER: The enclosed information is from sources believed to be reliable, but GeoDwell and Keller Williams Realty have not verified the accuracy of the information. GeoDwell and Keller Williams Realty make no guarantee, warranty or representation as to the information, and assumes no responsibility for any error, omission or inaccuracy. The information is subject to the possibility of errors, omissions, changes of condition, including price or rental, or withdrawal without notice. Any projections, assumptions or estimates are for illustrative purposes only. Recipients should conduct their own investigation.





# GeoDwell<sup>SM</sup>

REAL ESTATE SERVICES

CONTACT: (682) 235-4GEO  
[michelle@geoDWELL.com](mailto:michelle@geoDWELL.com)  
[www.geoDWELL.com](http://www.geoDWELL.com)