

Expand/Relocate AUTOMOTIVE SALES & SERVICE SITES FOR SALE Norfolk, VA



946 E. Little Creek | \$900k



919 E. Little Creek | \$2.1M



900 E. Little Creek | \$600K



894 E. Little Creek | \$2.63M



881 E. Little Creek | \$1.0M



E. Little Creek Rd.






N. Military Hwy.




7044 N. Military Hwy. | \$1.2M



6936-50 N. Military Hwy. | \$TBD



3550 N. Military Hwy. | Sold



3430-62 N. Military Hwy. | \$6.3M



3335 N. Military Hwy. | \$1.46M



6414-6440 E. Virginia Beach Blvd. | \$5.0M



E. Virginia Beach Blvd.



6530 E. Va Beach Blvd. | \$1.7M

International Terminals

Port Authority

Elizabeth River

Norfolk

Contact: Jeff 757-589-5881 mack1589@gmail.com
 Lawrence 757-623+1052 ext 213 Lakebarb4@aol.com
www.loopnet.com/Listing/Automotive-Highway-Properties-Portfolio/17627901/



TABLE OF CONTENTS

AUTOMOTIVE SALES & SERVICE SITES FOR SALE Norfolk, VA

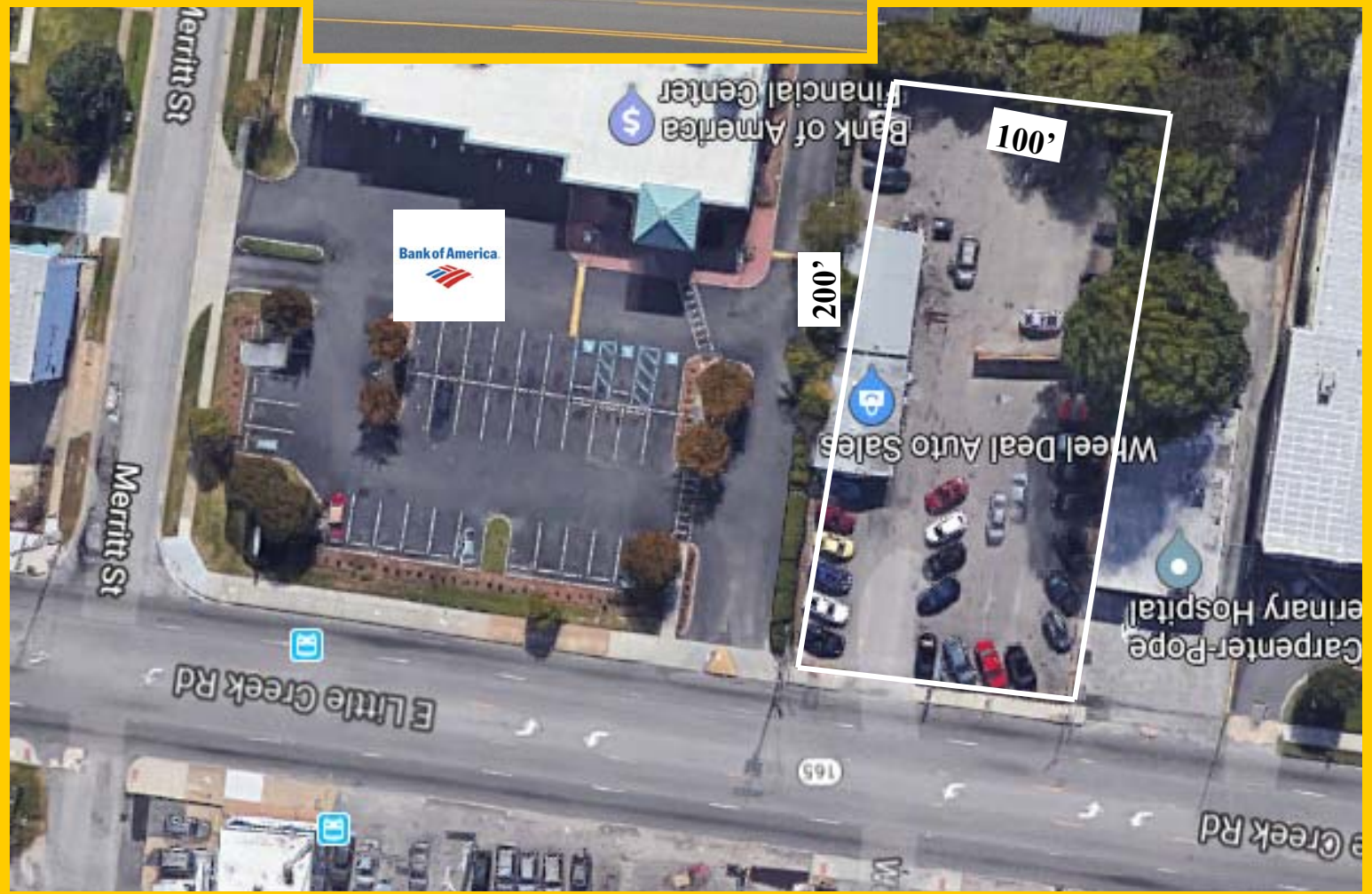
| Page | Address | Acres | Price | Notes |
|------|-------------------------------------|----------|-------------|-----------------------|
| 1 | 881 E. Little Creek Rd. | 0.45 | \$1,000,000 | |
| 2 | 894 E. Little Creek Rd. | 0.48 | \$2,630,000 | Rent income available |
| 3 | 900 E. Little Creek Rd. | 0.28 | \$600,000 | |
| 4-5 | 919 E. Little Creek Rd. | 1.92 | \$2,100,000 | Front of 918 Ave. J |
| 4-5 | 918 Avenue J (tow lot) subdividable | included | included | Rear of 919 ELCRd. |
| 6 | 946 E. Little Creek Rd. | 0.22 | \$900,000 | |
| 7 | 7044 N. Military Hwy. | 0.65 | \$1,200,000 | |
| 8 | 6936-6950 N. Military Hwy. | 3.87 | TBD | |
| 9 | 3530 N. Military Hwy. | 0.80 | SOLD | |
| 10 | 3430-3462 N. Military Hwy. | 2.87 | \$6,300,000 | |
| 11 | 3335 N. Military Hwy. | 0.76 | \$1,460,000 | |
| 12 | 6414-6440 E. Virginia Beach Blvd. | 2.07 | \$5,000,000 | |
| 13 | 6530 E. Virginia Beach Blvd. | 1.16 | \$1,700,000 | |

For updated pricing and availability contact:

Jeff 757-589-5881 mack1589@gmail.com

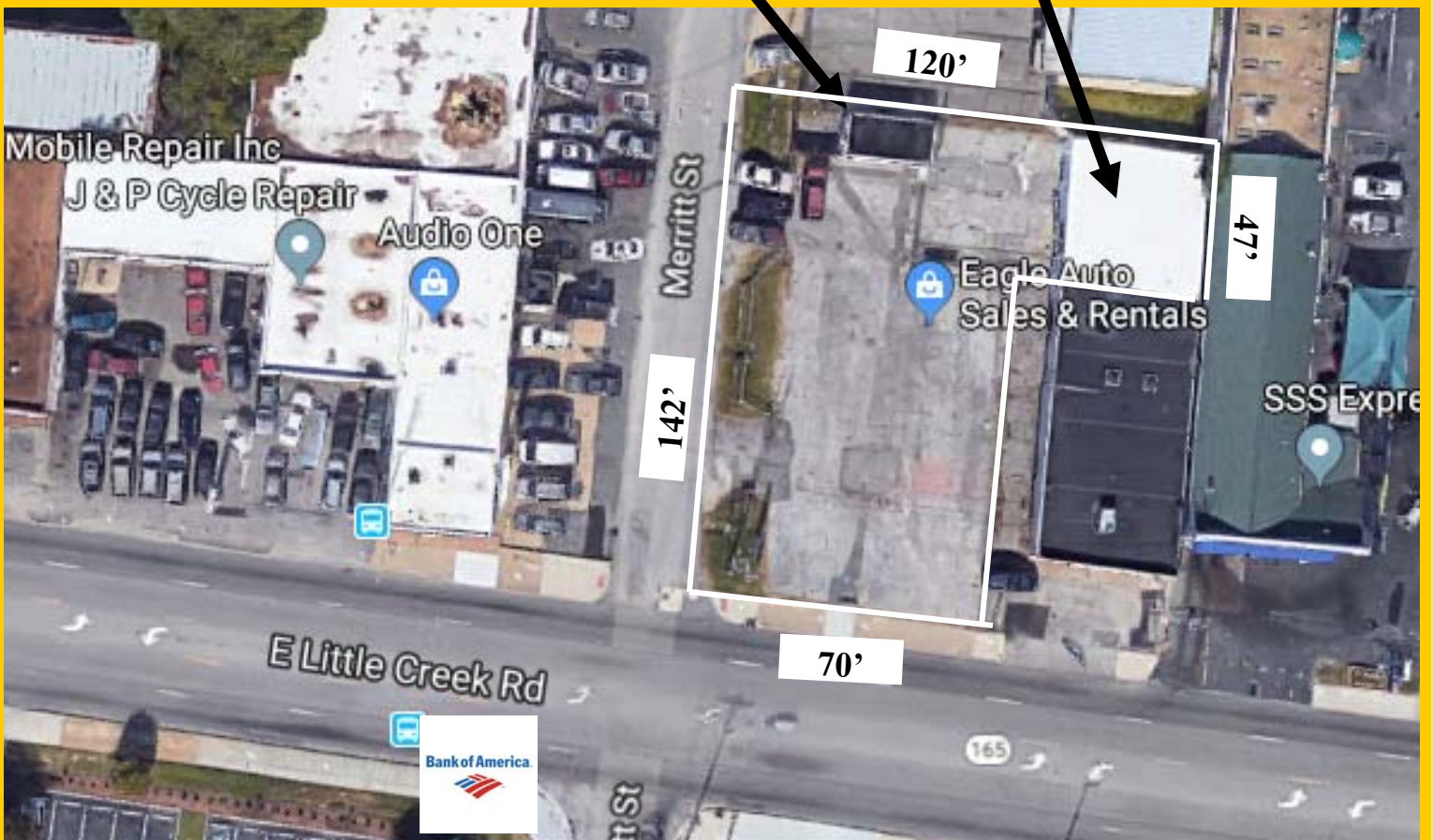
Lawrence 757-623-1062 ext 213 Lakebarb4@aol.com

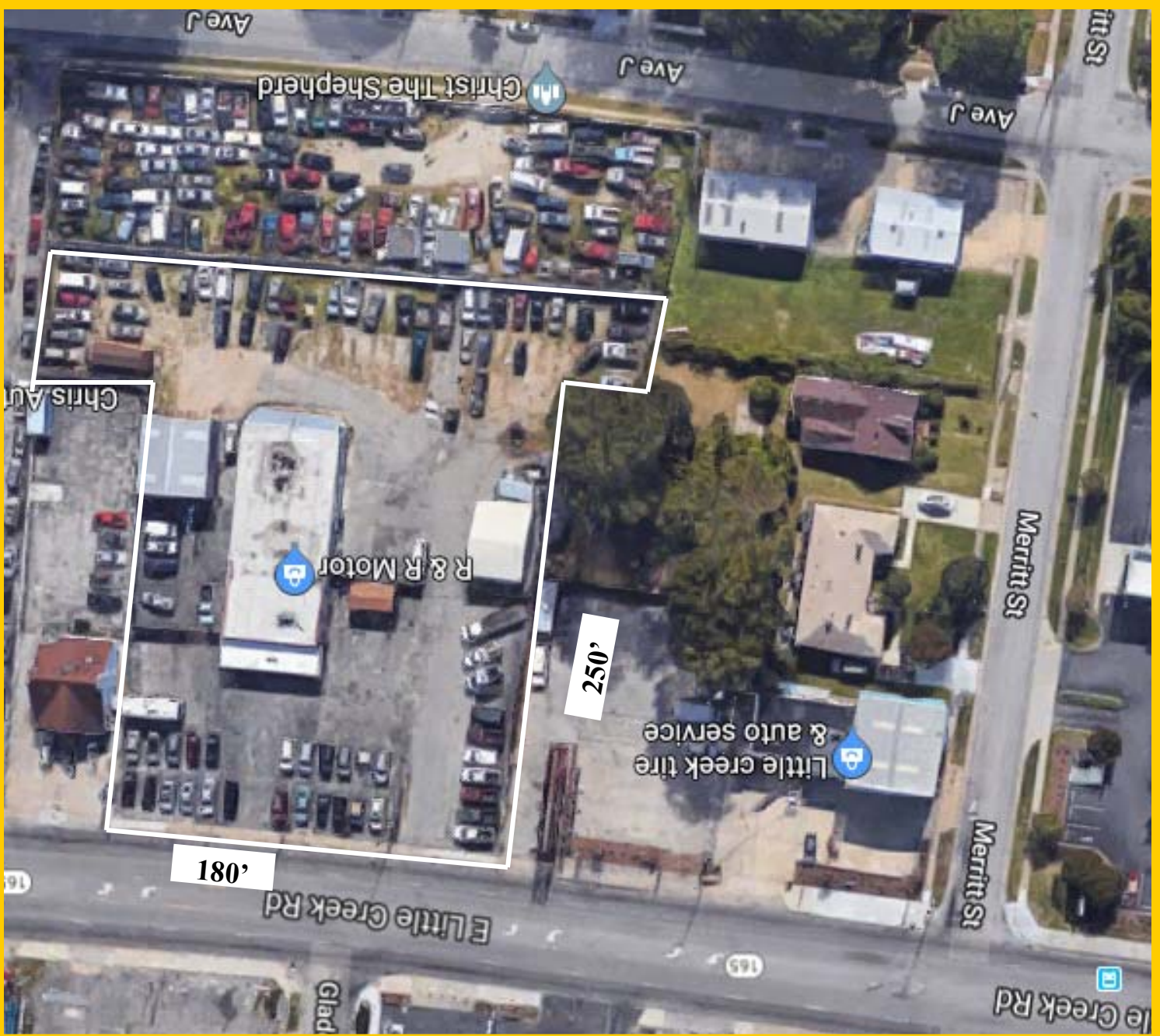
www.loopnet.com/Listing/Automotive-Highway-Properties-Portfolio/17627901/



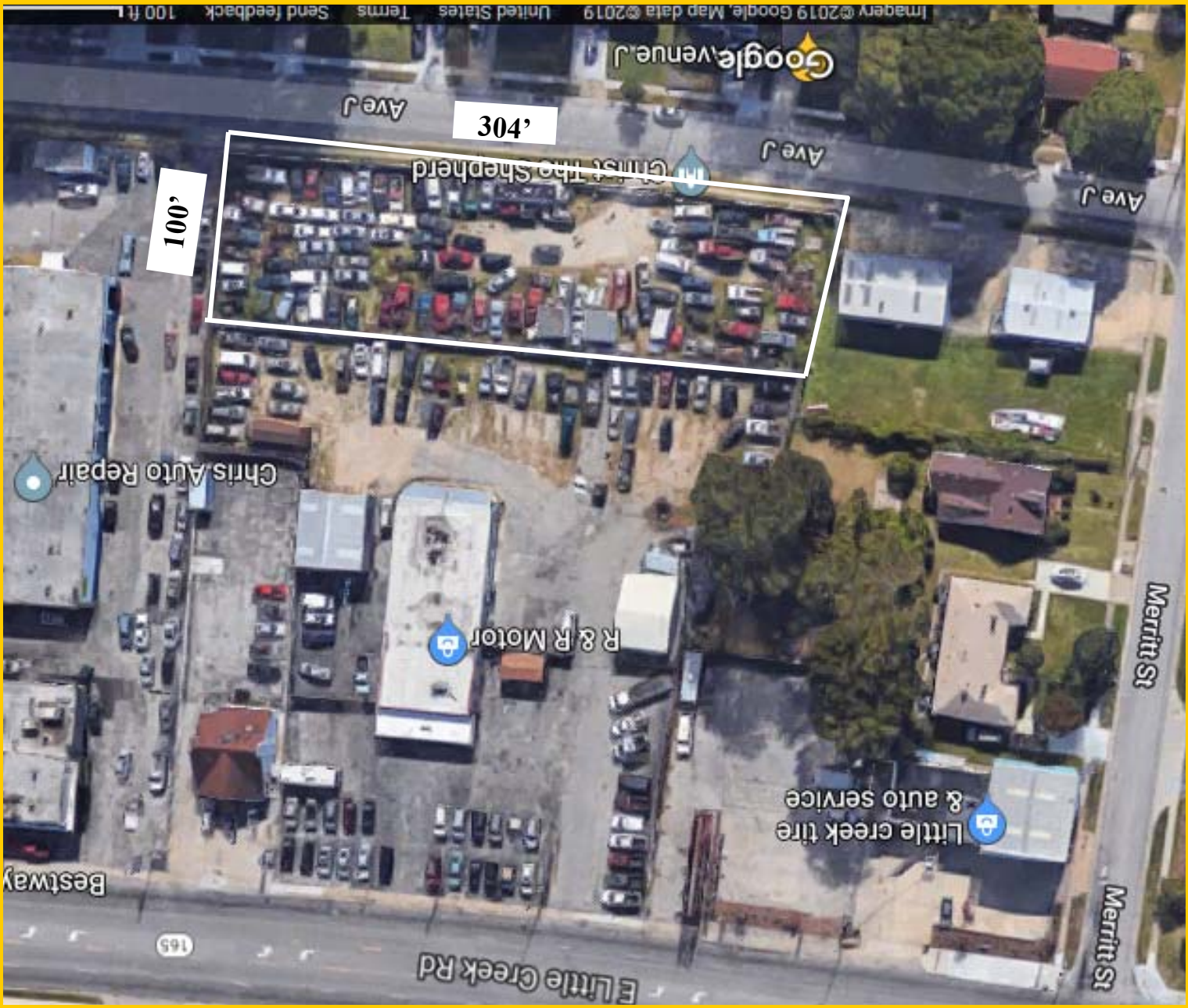


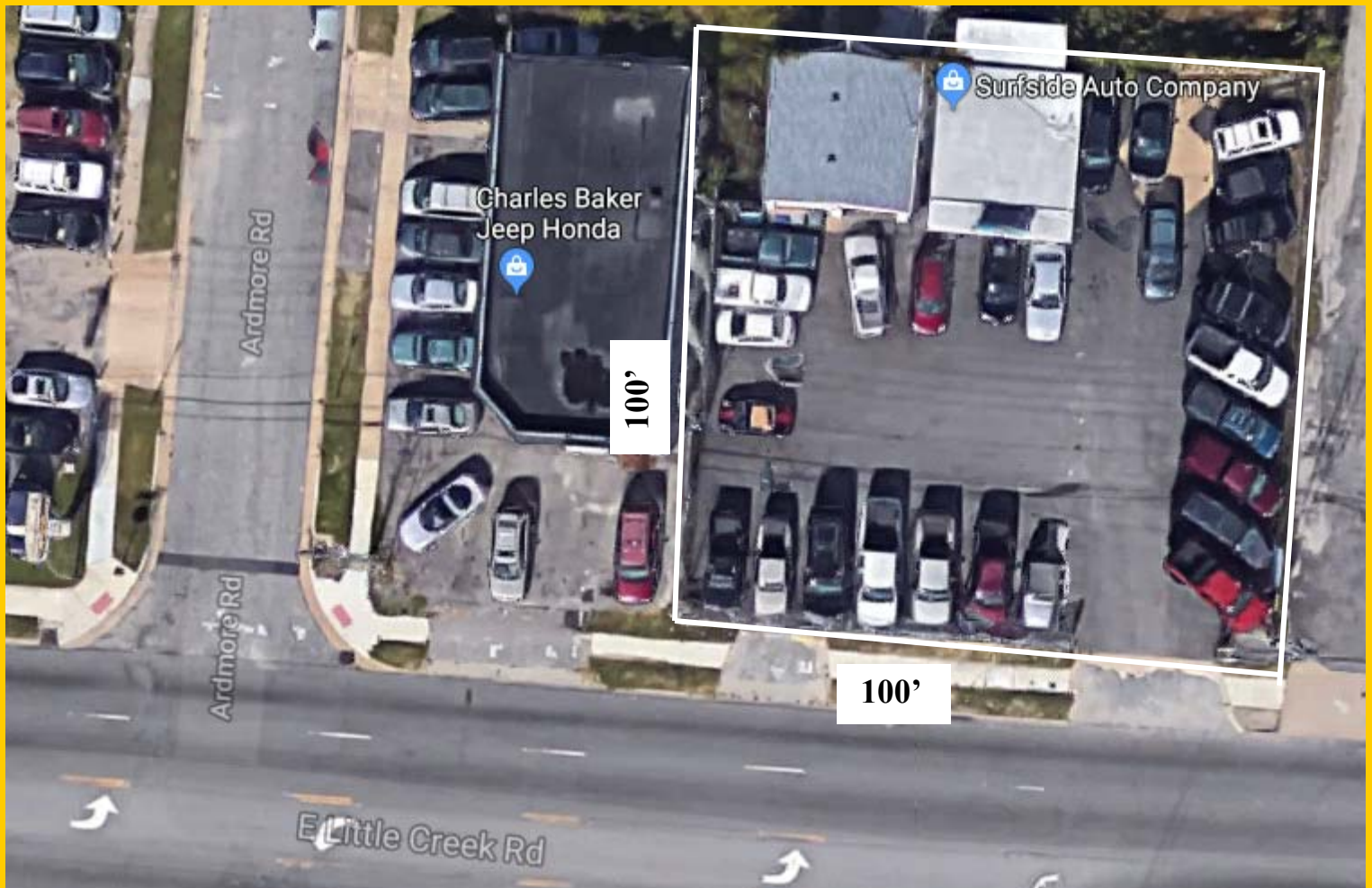
| | | | | |
|---------------------|----------|----------|----------|---------|
| Vehicles p/day | 24,543 | 1 Mile | 3 Miles | 5 Miles |
| Population | 16,634 | 114,378 | 221,227 | |
| Avg. Household Inc. | \$74,685 | \$80,304 | \$81,005 | |





918 Avenue J (rear tow lot), Norfolk, VA 23518
919 E. Little Creek Rd. (front sales lot) (prior page)













AVIS[®]
Budget[®]

326'

PRIORITY
FORD

© 2018 Google E 470'

N. Military Highway

Google E







Expand/Relocate AUTOMOTIVE SALES & SERVICE SITES FOR SALE Norfolk, VA



946 E. Little Creek | \$900k



919 E. Little Creek | \$2.1M



900 E. Little Creek | \$600K



894 E. Little Creek | \$2.63M



881 E. Little Creek | \$1.0M



E. Little Creek Rd.






N. Military Hwy.



7044 N. Military Hwy. | \$1.2M



6936-50 N. Military Hwy. | \$TBD



3550 N. Military Hwy. | Sold



3430-62 N. Military Hwy. | \$6.3M



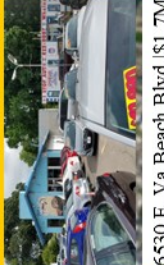
3335 N. Military Hwy. | \$1.46M



6414-6440 E. Virginia Beach Blvd. | \$5.0M



E. Virginia Beach Blvd.



6530 E. Va Beach Blvd. | \$1.7M

International Terminals

Port Authority

Elizabeth River

Norfolk

Contact: Jeff 757-589-5881 mack1589@gmail.com
 Lawrence 757-623+1052 ext 213 Lakebarb4@aol.com
www.loopnet.com/Listing/Automotive-Highway-Properties-Portfolio/17627901/

