

Newly built school available for sublease

501 Gerard Avenue Bronx, NY



Space profile

- Entire 1st Floor - 11,986 RSF
- Entire 2nd Floor - 12,432 RSF
- Entire 3rd Floor - 12,432 RSF
- Entire 4th Floor - 12,432 RSF
- Entire 5th Floor - 12,432 RSF
- Entire 6th Floor - 12,432 RSE

Total - 74,146 RSF

Key highlights

- Newly built school available for sublease
- 33 full size classrooms, 2 science labs, 10 offices/small instruction rooms
- Extracurricular spaces: cafetorium, full commercial kitchen, dance studio, sound attenuated music room and full size gymnasium across the street
- ADA access including large passenger elevators
- Drive-in truck loading dock and significant basement storage space
- 10 dedicated parking spots and shared outdoor play space
- Community school district 7
- Direct Proximity to 149 St - Grand Concourse Station (2, 4, 5)

Andrew Dzenis
Managing Director
andrew.dzenis@jll.com
212-376-5447

Lauren Calandriello
Vice President
lauren.calandriello@jll.com
732-433-8386

Natalie Sachmechi
Associate
natalie.sachmechi@jll.com
516-417-7976

David Carlos
Vice Chairman
david.carlos@jll.com
917-541-5888

Space photos



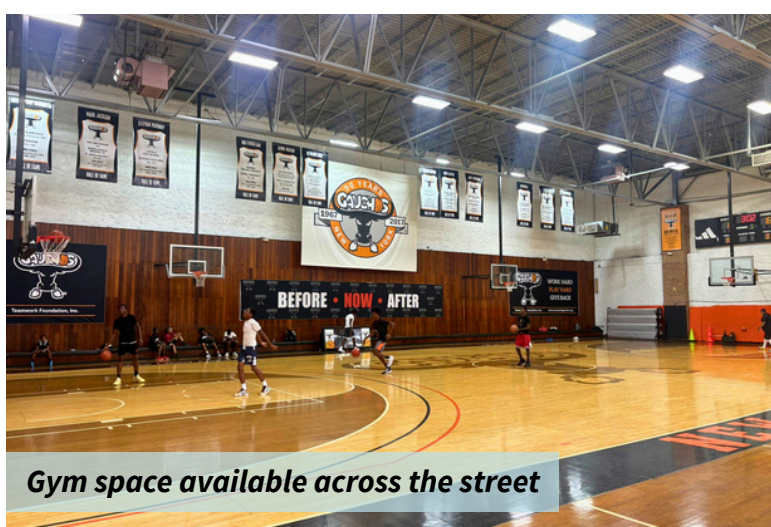
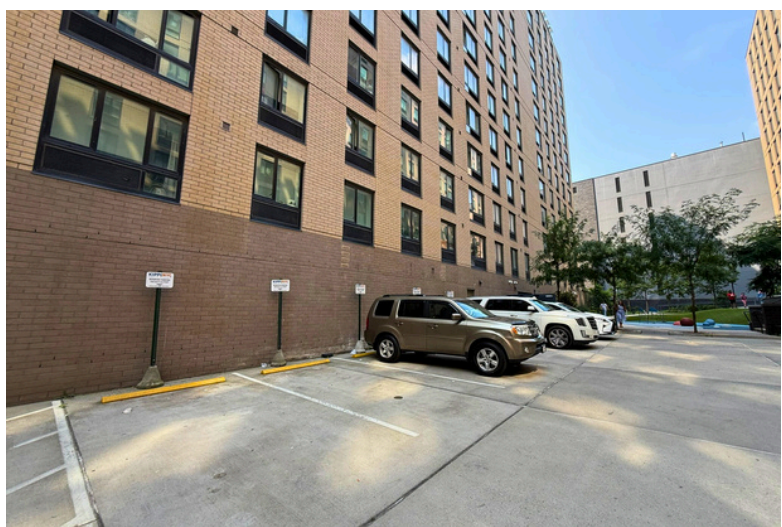
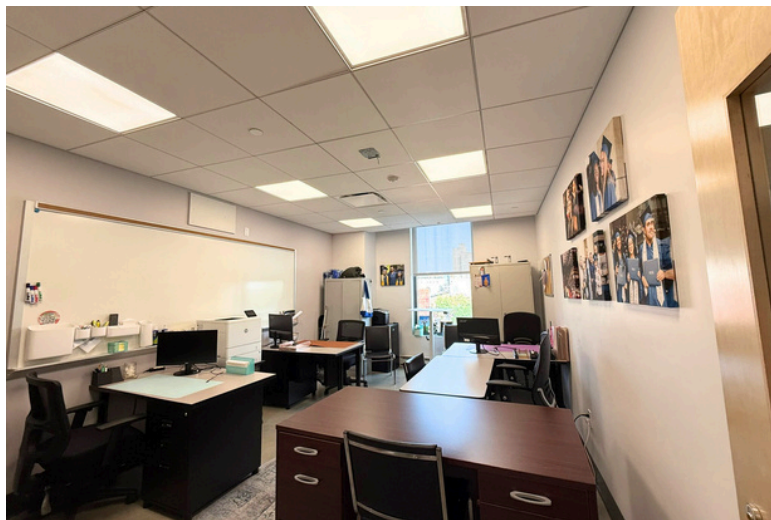
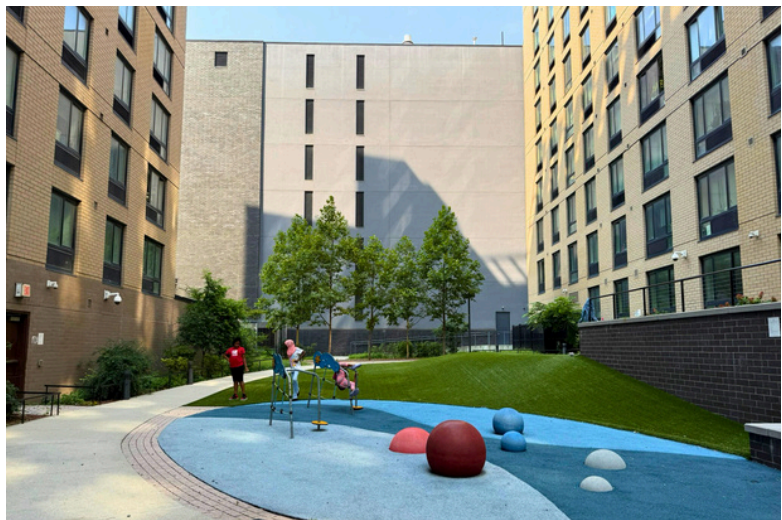
Andrew Dzenis
 Managing Director
 andrew.dzenis@jll.com
 212-376-5447

Lauren Calandriello
 Vice President
 lauren.calandriello@jll.com
 732-433-8386

Natalie Sachmechi
 Associate
 natalie.sachmechi@jll.com
 516-417-7976

David Carlos
 Vice Chairman
 david.carlos@jll.com
 917-541-5888

Space photos



Gym space available across the street

Andrew Dzenis
 Managing Director
 andrew.dzenis@jll.com
 212-376-5447

Lauren Calandriello
 Vice President
 lauren.calandriello@jll.com
 732-433-8386

Natalie Sachmechi
 Associate
 natalie.sachmechi@jll.com
 516-417-7976

David Carlos
 Vice Chairman
 david.carlos@jll.com
 917-541-5888

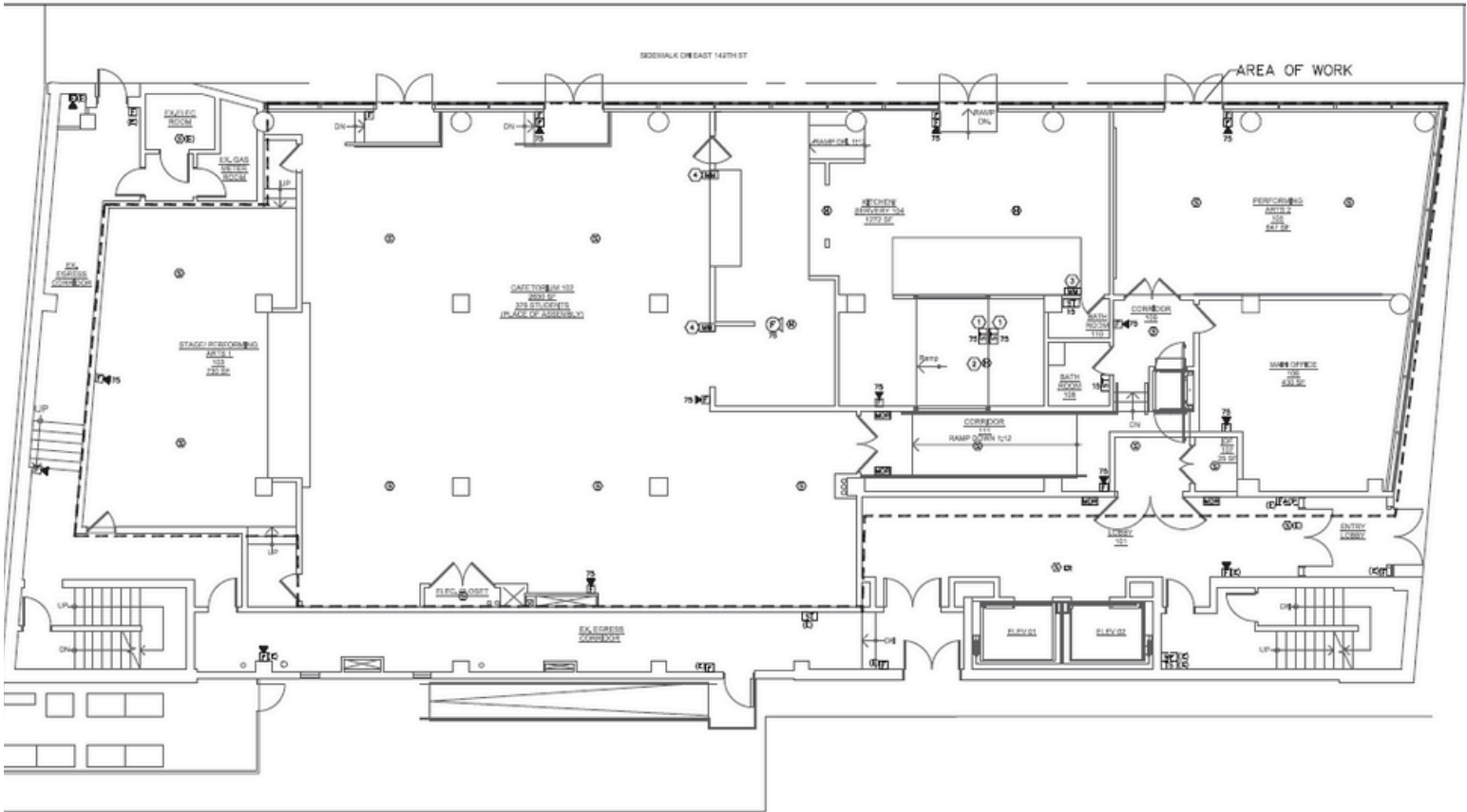
Bronx neighborhood map



<p>Andrew Dzenis Managing Director andrew.dzenis@jll.com 212-376-5447</p>	<p>Lauren Calandriello Vice President lauren.calandriello@jll.com 732-433-8386</p>	<p>Natalie Sachmechi Associate natalie.sachmechi@jll.com 516-417-7976</p>	<p>David Carlos Vice Chairman david.carlos@jll.com 917-541-5888</p>
---	--	---	---

For sublease

Entire 1st Floor 11,986 RSF



1ST FLOOR FIRE ALARM PLAN

3/16" = 1'-0"

KEY NOTES:

- ① FIRE ALARM DEVICE SHALL BE RATED FOR DUMP AND COLD LOCATION.
- ② FIRE ALARM DEVICE MOUNTED ABOVE WALK-ARE.
- ③ RELAY FOR CONNECTION TO FIRE SUPPRESSION SYSTEM.
- ④ RELAY FOR CONNECTION TO COUNTER DOOR CONTROL.



2 MECHANICAL DECK FIRE ALARM PLAN

3/16" = 1'-0"

Andrew Dzenis
 Managing Director
 andrew.dzenis@jll.com
 212-376-5447

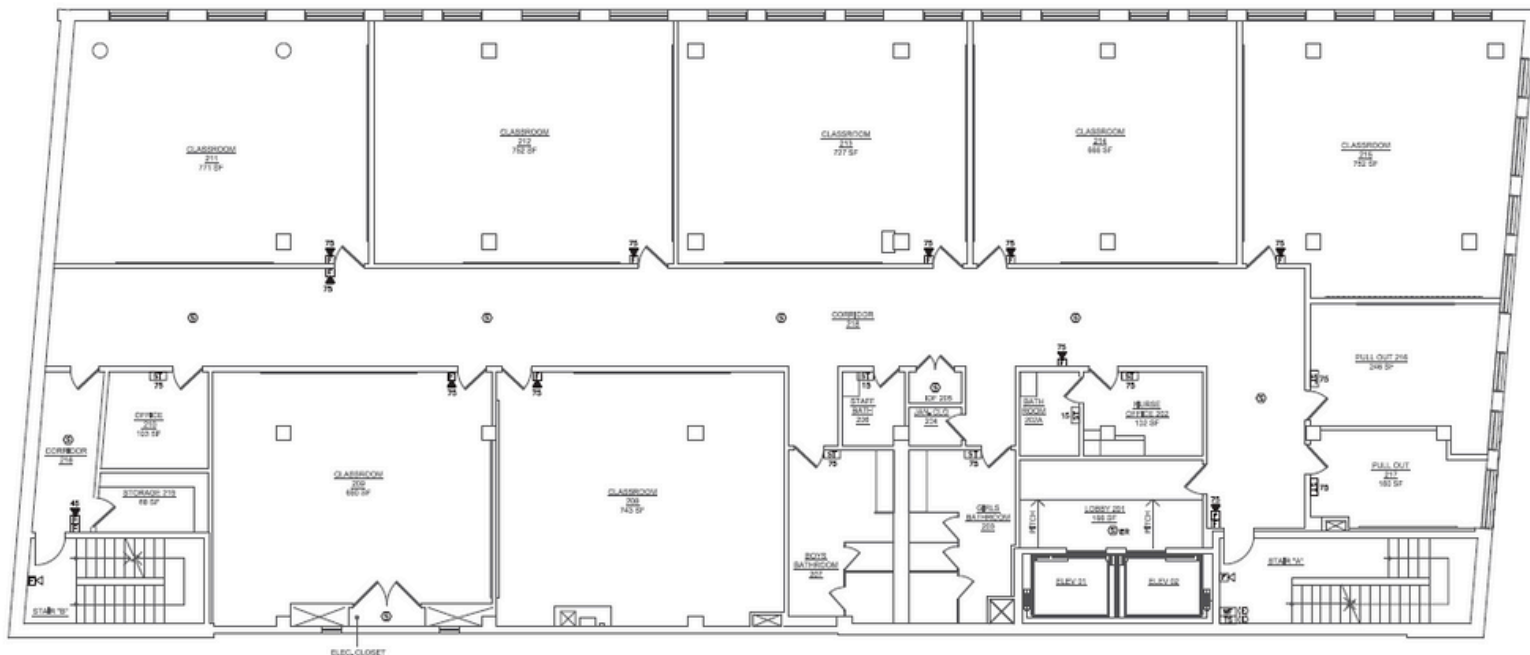
Lauren Calandriello
 Vice President
 lauren.calandriello@jll.com
 732-433-8386

Natalie Sachmechi
 Associate
 natalie.sachmechi@jll.com
 516-417-7976

David Carlos
 Vice Chairman
 david.carlos@jll.com
 917-541-5888

For sublease

Entire 2nd Floor 12,432 RSF



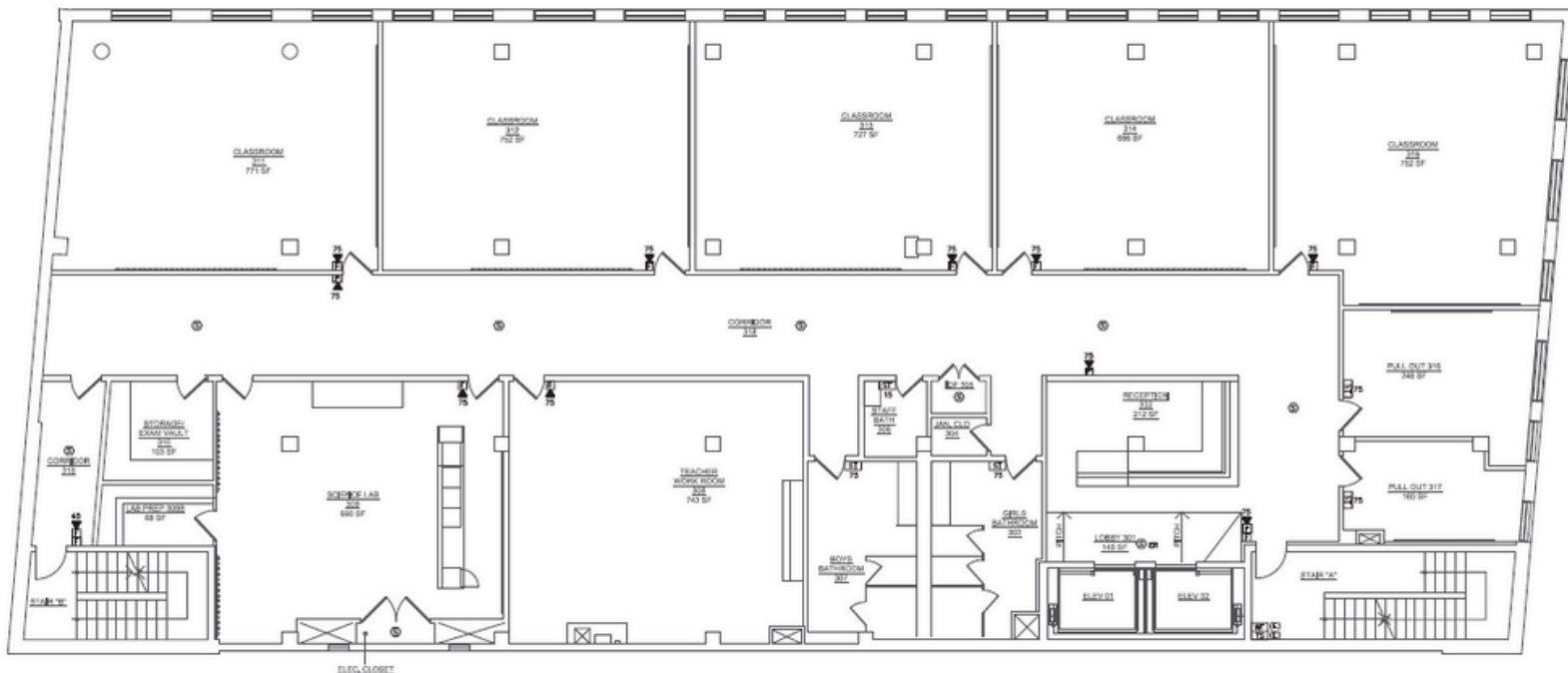
1 2ND FLOOR FIRE ALARM PLAN 318' x 140'

<p>Andrew Dzenis Managing Director andrew.dzenis@jll.com 212-376-5447</p>	<p>Lauren Calandriello Vice President lauren.calandriello@jll.com 732-433-8386</p>	<p>Natalie Sachmechi Associate natalie.sachmechi@jll.com 516-417-7976</p>	<p>David Carlos Vice Chairman david.carlos@jll.com 917-541-5888</p>
---	--	---	---

DISCLAIMER: Although information has been obtained from sources deemed reliable, neither Owner nor JLL makes any guarantees, warranties or representations, express or implied, as to the completeness or accuracy as to the information contained herein. Any projections, opinions, assumptions or estimates used are for example only. There may be differences between projected and actual results, and those differences may be material. The Property may be withdrawn without notice. Neither Owner nor JLL accepts any liability for any loss or damage suffered by any party resulting from reliance on this information. If the recipient of this information has signed a confidentiality agreement regarding this matter, this information is subject to the terms of that agreement. ©2025 Jones Lang LaSalle IP, Inc. All rights reserved.

For sublease

Entire 3rd Floor 12,432 RSF



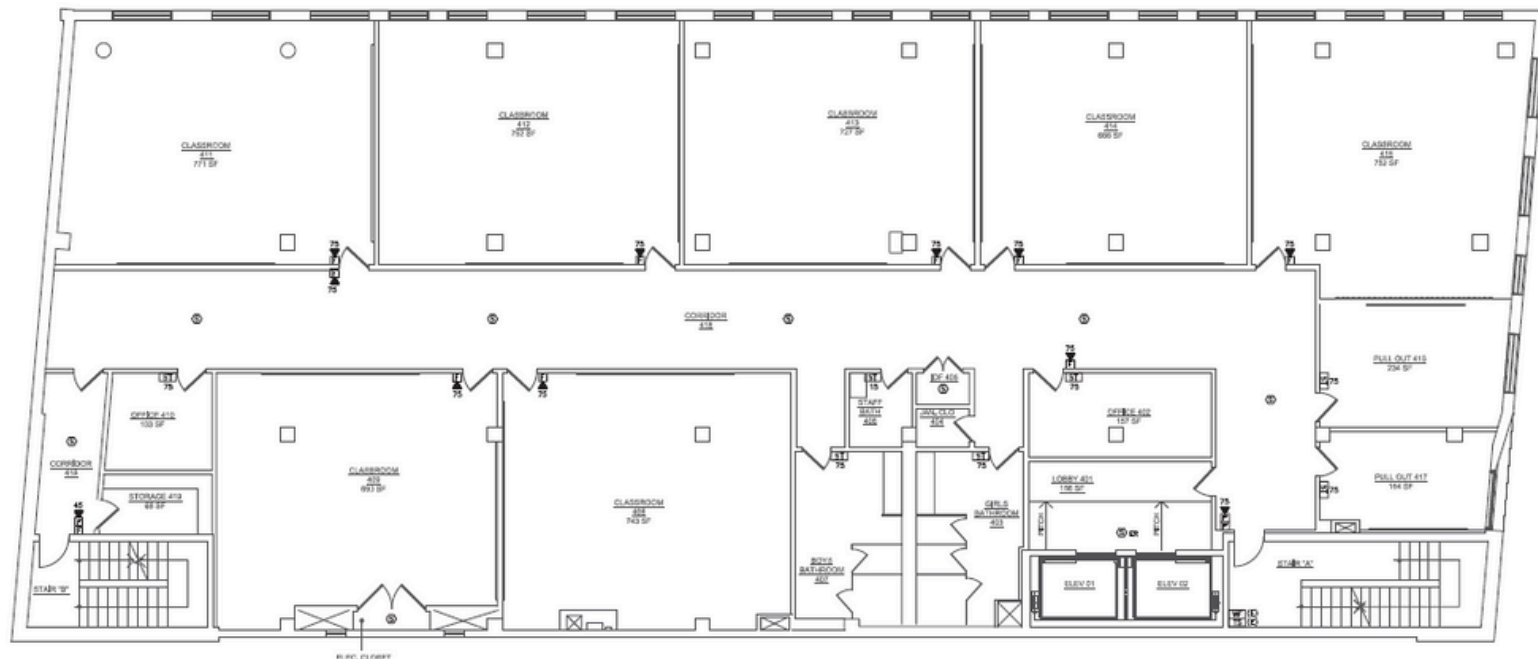
1 3RD FLOOR FIRE ALARM PLAN
3/16" = 1'-0"

<p>Andrew Dzenis Managing Director andrew.dzenis@jll.com 212-376-5447</p>	<p>Lauren Calandriello Vice President lauren.calandriello@jll.com 732-433-8386</p>	<p>Natalie Sachmechi Associate natalie.sachmechi@jll.com 516-417-7976</p>	<p>David Carlos Vice Chairman david.carlos@jll.com 917-541-5888</p>
---	--	---	---

DISCLAIMER
 Although information has been obtained from sources deemed reliable, neither Owner nor JLL makes any guarantees, warranties or representations, express or implied, as to the completeness or accuracy as to the information contained herein. Any projections, opinions, assumptions or estimates used are for example only. There may be differences between projected and actual results, and those differences may be material. The Property may be withdrawn without notice. Neither Owner nor JLL accepts any liability for any loss or damage suffered by any party resulting from reliance on this information. If the recipient of this information has signed a confidentiality agreement regarding this matter, this information is subject to the terms of that agreement. ©2025 Jones Lang LaSalle IP, Inc. All rights reserved.

For sublease

Entire 4th Floor 12,432 RSF



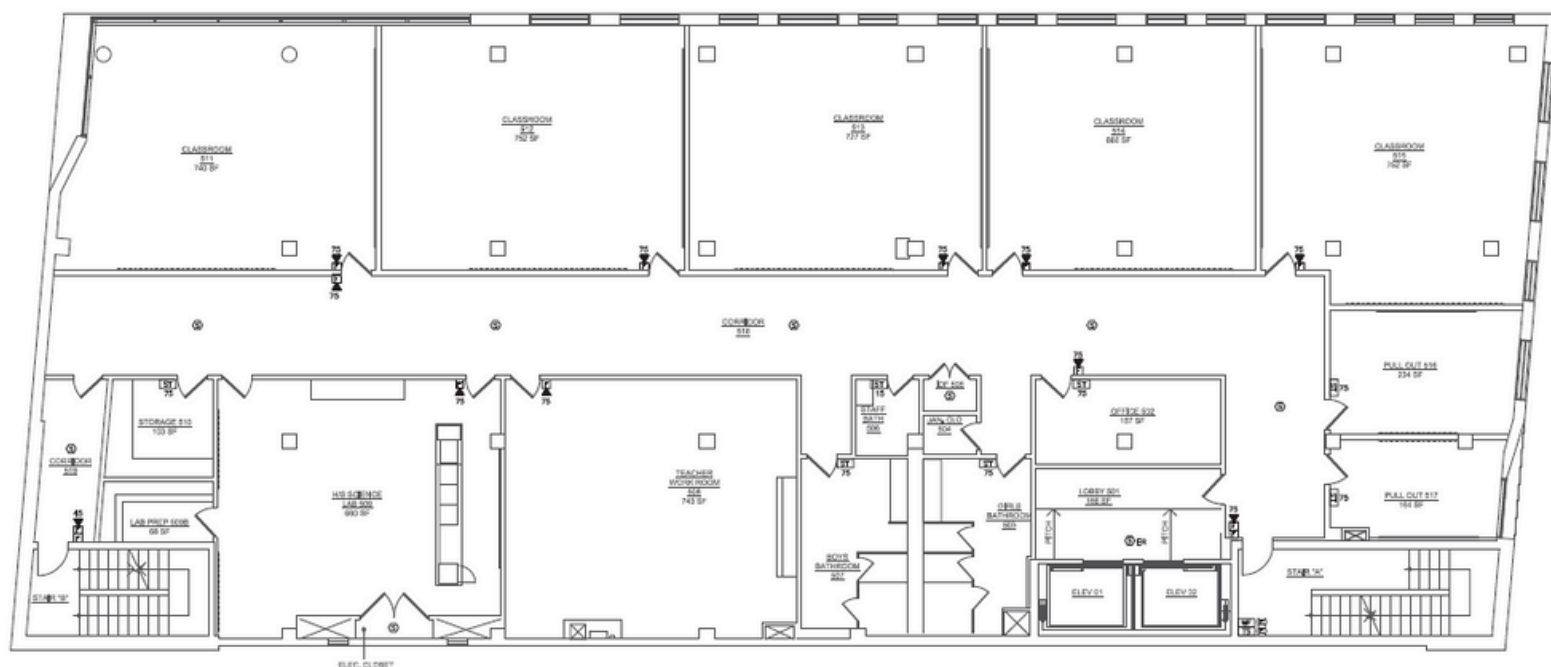
1 4TH FLOOR FIRE ALARM PLAN
3/16" = 1'-0"

<p>Andrew Dzenis Managing Director andrew.dzenis@jll.com 212-376-5447</p>	<p>Lauren Calandriello Vice President lauren.calandriello@jll.com 732-433-8386</p>	<p>Natalie Sachmechi Associate natalie.sachmechi@jll.com 516-417-7976</p>	<p>David Carlos Vice Chairman david.carlos@jll.com 917-541-5888</p>
--	---	--	--

DISCLAIMER
Although information has been obtained from sources deemed reliable, neither Owner nor JLL makes any guarantees, warranties or representations, express or implied, as to the completeness or accuracy as to the information contained herein. Any projections, opinions, assumptions or estimates used are for example only. There may be differences between projected and actual results, and those differences may be material. The Property may be withdrawn without notice. Neither Owner nor JLL accepts any liability for any loss or damage suffered by any party resulting from reliance on this information. If the recipient of this information has signed a confidentiality agreement regarding this matter, this information is subject to the terms of that agreement. ©2025 Jones Lang LaSalle IP, Inc. All rights reserved.

For sublease

Entire 5th Floor 12,432 RSF



1 5TH FLOOR FIRE ALARM PLAN
1/8" = 1'-0"

<p>Andrew Dzenis Managing Director andrew.dzenis@jll.com 212-376-5447</p>	<p>Lauren Calandriello Vice President lauren.calandriello@jll.com 732-433-8386</p>	<p>Natalie Sachmechi Associate natalie.sachmechi@jll.com 516-417-7976</p>	<p>David Carlos Vice Chairman david.carlos@jll.com 917-541-5888</p>
---	--	---	---

DISCLAIMER
 Although information has been obtained from sources deemed reliable, neither Owner nor JLL makes any guarantees, warranties or representations, express or implied, as to the completeness or accuracy as to the information contained herein. Any projections, opinions, assumptions or estimates used are for example only. There may be differences between projected and actual results, and those differences may be material. The Property may be withdrawn without notice. Neither Owner nor JLL accepts any liability for any loss or damage suffered by any party resulting from reliance on this information. If the recipient of this information has signed a confidentiality agreement regarding this matter, this information is subject to the terms of that agreement. ©2025 Jones Lang LaSalle IP, Inc. All rights reserved.

