

REBY
ORNER
IN THE KING
25.

REBY
ORNER
IN THE KING
25.

REBY
ORNER
IN THE KING
25.

REBY
ORNER
IN THE KING
25.

REBY
ORNER
IN THE KING
25.

REBY
ORNER
IN THE KING
25.

REBY
ORNER
IN THE KING
25.

REBY
ORNER
IN THE KING
25.

REBY
ORNER
IN THE KING
25.

REBY
ORNER
IN THE KING
25.

OF RECORD

OF RECORD

OF RECORD

OF RECORD

OF RECORD

OF RECORD

OF RECORD

OF RECORD

OF RECORD

OF RECORD

OF RECORD

OF RECORD

OF RECORD

OF RECORD

OF RECORD

OF RECORD

OF RECORD

OF RECORD

OF RECORD

OF RECORD

OF RECORD

OF RECORD

OF RECORD

OF RECORD

OF RECORD

OF RECORD

OF RECORD

OF RECORD

OF RECORD

OF RECORD

OF RECORD

OF RECORD

OF RECORD

OF RECORD

OF RECORD

OF RECORD

OF RECORD

OF RECORD

OF RECORD

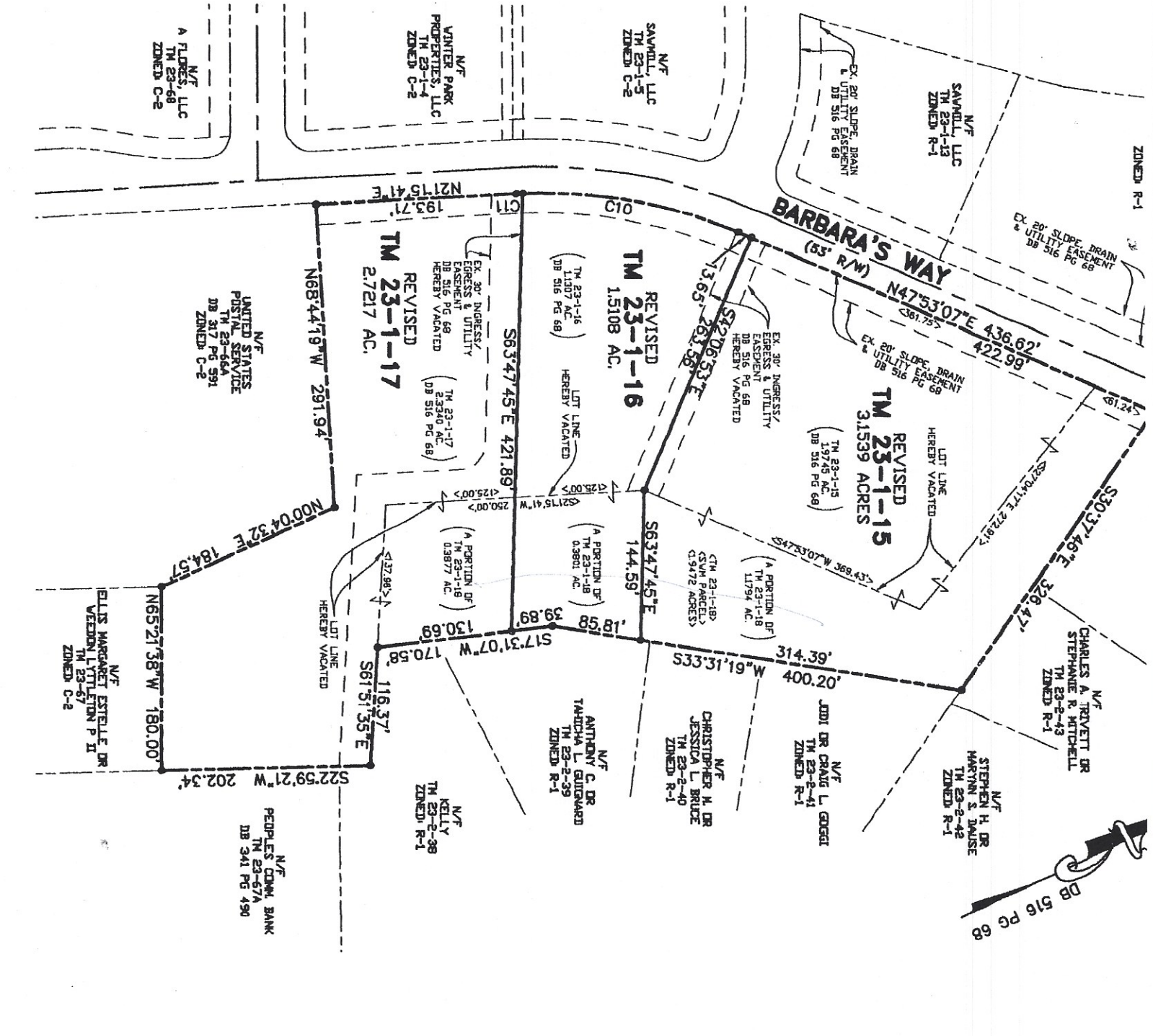
OF RECORD

OF RECORD

OF RECORD

OF RECORD

OF RECORD



CERTIFICATE OF SURVEY

THIS BOUNDARY LINE AT 23-1-15, TM 23-1-16, TM 23-1-17, TM 23-1-18, TM 23-1-19, TM 23-1-20, TM 23-1-21, TM 23-1-22, TM 23-1-23, TM 23-1-24, TM 23-1-25, TM 23-1-26, TM 23-1-27, TM 23-1-28, TM 23-1-29, TM 23-1-30, TM 23-1-31, TM 23-1-32, TM 23-1-33, TM 23-1-34, TM 23-1-35, TM 23-1-36, TM 23-1-37, TM 23-1-38, TM 23-1-39, TM 23-1-40, TM 23-1-41, TM 23-1-42, TM 23-1-43, TM 23-1-44, TM 23-1-45, TM 23-1-46, TM 23-1-47, TM 23-1-48, TM 23-1-49, TM 23-1-50, TM 23-1-51, TM 23-1-52, TM 23-1-53, TM 23-1-54, TM 23-1-55, TM 23-1-56, TM 23-1-57, TM 23-1-58, TM 23-1-59, TM 23-1-60, TM 23-1-61, TM 23-1-62, TM 23-1-63, TM 23-1-64, TM 23-1-65, TM 23-1-66, TM 23-1-67, TM 23-1-68, TM 23-1-69, TM 23-1-70, TM 23-1-71, TM 23-1-72, TM 23-1-73, TM 23-1-74, TM 23-1-75, TM 23-1-76, TM 23-1-77, TM 23-1-78, TM 23-1-79, TM 23-1-80, TM 23-1-81, TM 23-1-82, TM 23-1-83, TM 23-1-84, TM 23-1-85, TM 23-1-86, TM 23-1-87, TM 23-1-88, TM 23-1-89, TM 23-1-90, TM 23-1-91, TM 23-1-92, TM 23-1-93, TM 23-1-94, TM 23-1-95, TM 23-1-96, TM 23-1-97, TM 23-1-98, TM 23-1-99, TM 23-1-100.

APPROVED BY THE UNDERSIG EXISTING REGULATIONS AND 1 RECORD.

AGENT FOR KING GEORGE COUNTY GOVERNING BODY

SURVEYOR'S CERTIFICATE

I HEREBY CERTIFY, TO THE BEST OF MY KNOWLEDGE AND BELIEF, THAT ALL OF THE INFORMATION CONTAINED HEREIN IS TRUE AND CORRECT, AND THAT I AM A LICENSED SURVEYOR IN THE STATE OF VIRGINIA, REGISTRATION NO. 123456789.

THE RECORD OWNER OF TAX I 23-1-17 & 23-1-18 SHOWN SAWMILL, LLC WHO OBTAINED MARCH 29, 2006 AND RECORD COUNTY CIRCUIT COURT CLERK 585 PAGE 625.

GIVEN UNDER MY HAND THIS

