



Colliers

For Lease

**Talor Okada**

Executive Vice President  
425 492 5145  
talor.okada@colliers.com

**Rich Sander**

Associate Vice President  
360 981 2543  
rich.sander@colliers.com

**Jack Dennis**

Associate  
425 453 3144  
jack.dennis@colliers.com

**Jack Heed**

Associate  
425 453 3147  
jack.heed@colliers.com

**Colliers Bellevue**

11225 SE 6th Street, Suite 240  
Bellevue, WA, 98004  
colliers.com

# 10910 Holly Drive

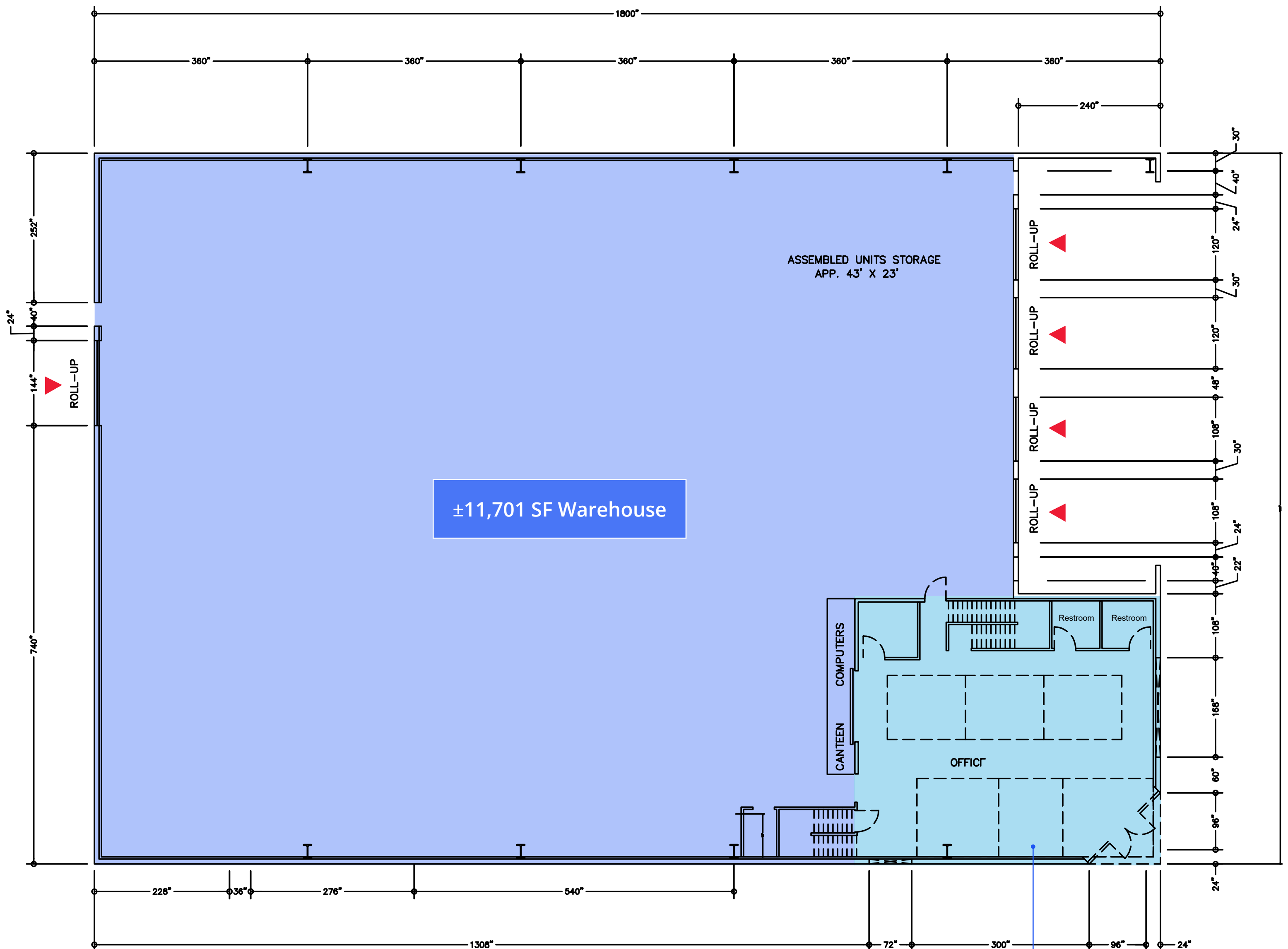
Everett, WA 98204

- Building A: ±14,674 SF Total Available
  - » ±11,701 SF warehouse
  - » ±2,973 SF office
- Fully fenced and secured site with two points of ingress/egress
- Five (5) grade level loading doors and dock high loading platform
- Clear Height: 22' in warehouse, fully insulated
- Clear span warehouse, fully sprinklered space with power and air drops throughout
- Zoning: LI-1 (Light Industrial, City of Everett jurisdiction)
- Heavy 3-phase power service
- High image building with easy access to I-5, Hwy-99, and SR-525
- Asking Rent: \$21,750.00 per month + NNN Expenses
  - » (2026 NNN Est. = \$3,753.43/Mo.)
- Available Immediately



## Building A Highlights

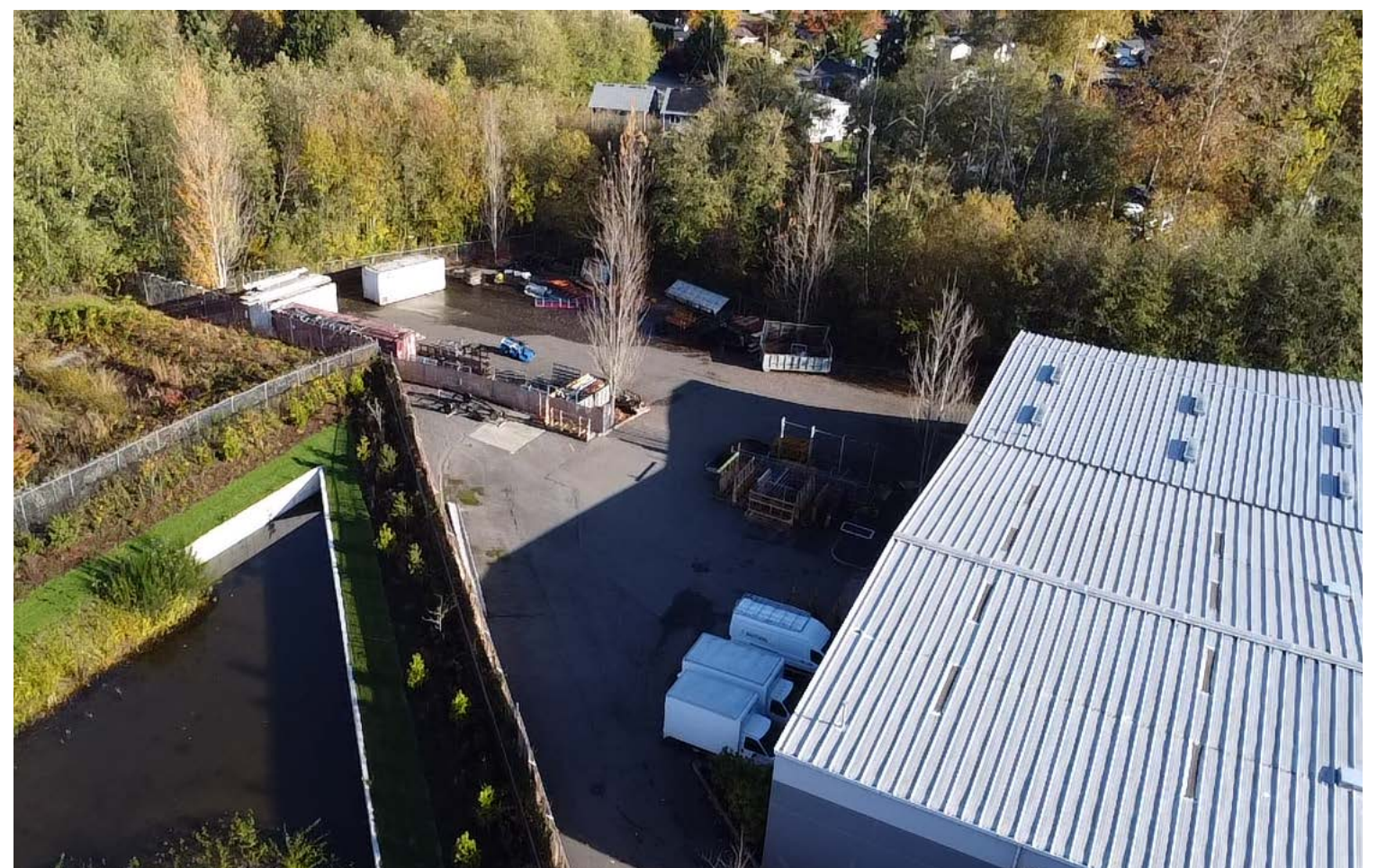
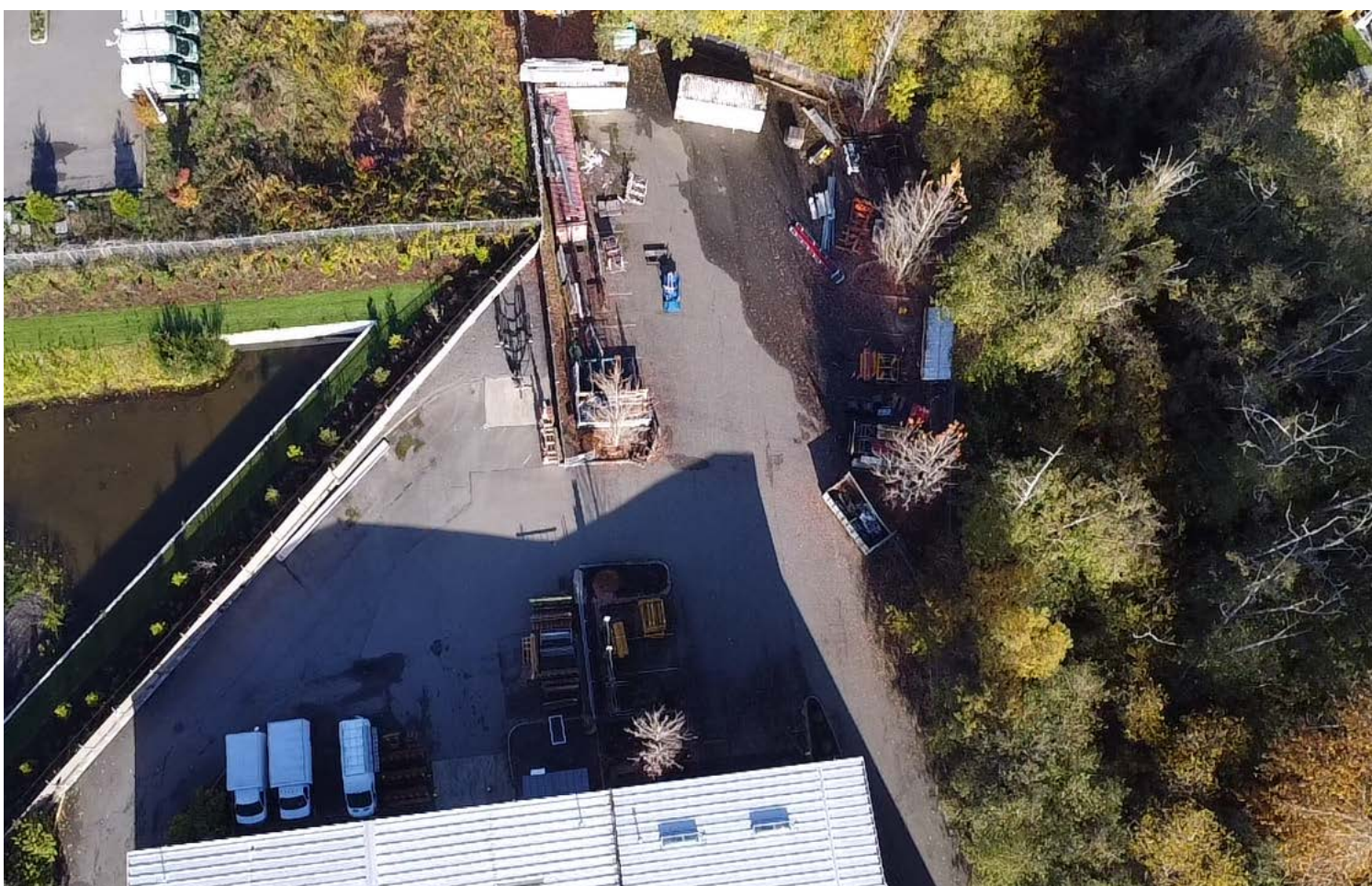
- ±14,674 SF Total (±11,701 SF warehouse / ±2,973 SF office)
- Five (5) grade-level loading doors (two 10' x 12', two 10' x 14', one 12' x 14') and dock-high loading platform
- Clear height: 22', fully insulated
- Power: 400amps 240v 3-phase
- Clear span with power and compressed air drops throughout
- Available immediately
- Asking Rent: \$21,750.00 per month + NNN expenses (2026 NNN Est = \$3,753.43/Mo.)



Office: 1,486.5 SF (x2 stories) = ±2,973 SF

For Lease

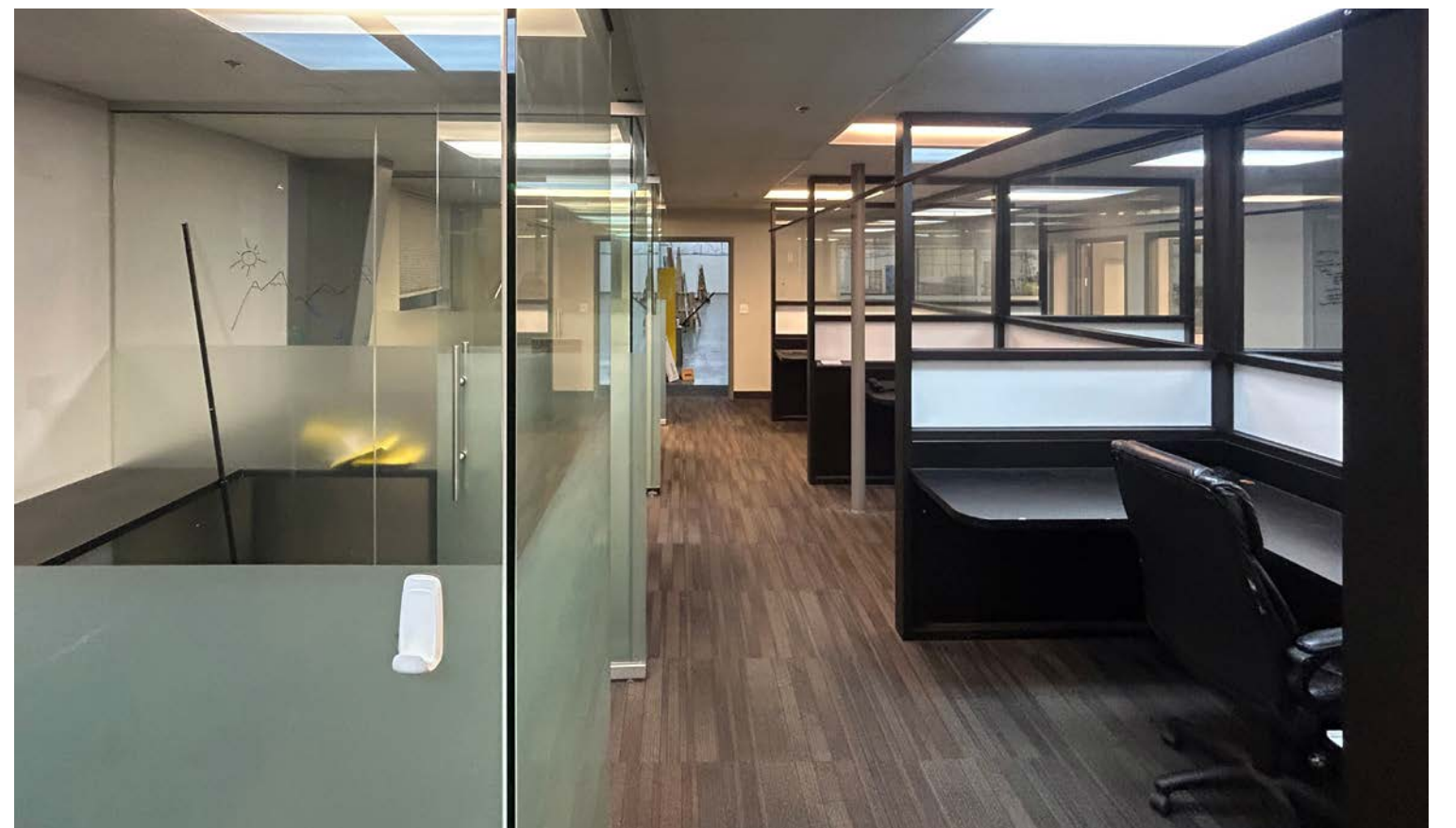
10910 Holly Drive, Everett, WA 98204



For Lease

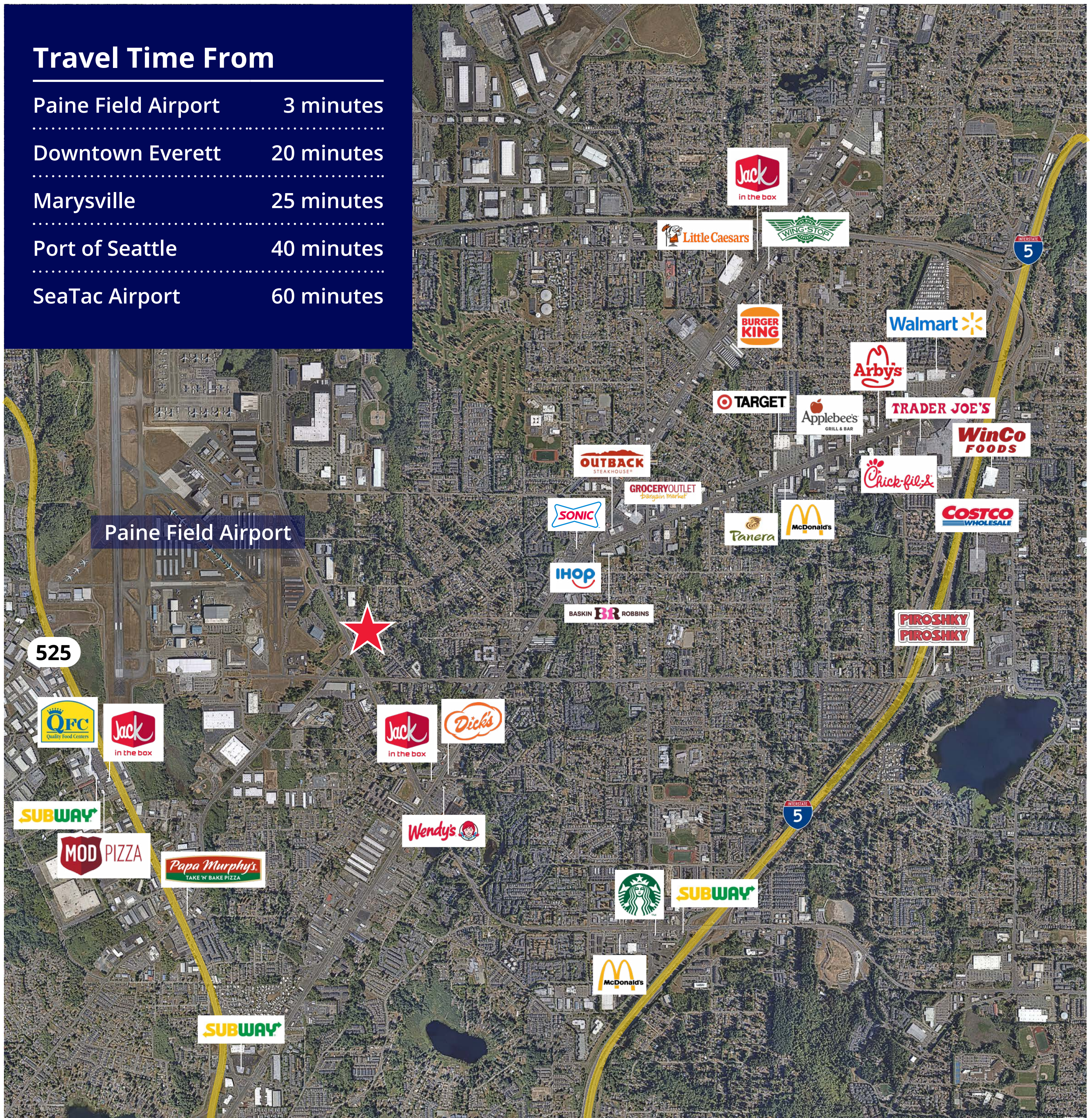
10910 Holly Drive, Everett, WA 98204

## Building A Photos



### Travel Time From

Paine Field Airport	3 minutes
Downtown Everett	20 minutes
Marysville	25 minutes
Port of Seattle	40 minutes
SeaTac Airport	60 minutes



**Talor Okada**  
Executive Vice President  
425 492 5145  
talor.okada@colliers.com

**Rich Sander**  
Associate Vice President  
360 981 2543  
rich.sander@colliers.com

**Jack Dennis**  
Associate  
425 453 3144  
jack.dennis@colliers.com

**Jack Heed**  
Associate  
425 453 3147  
jack.heed@colliers.com