

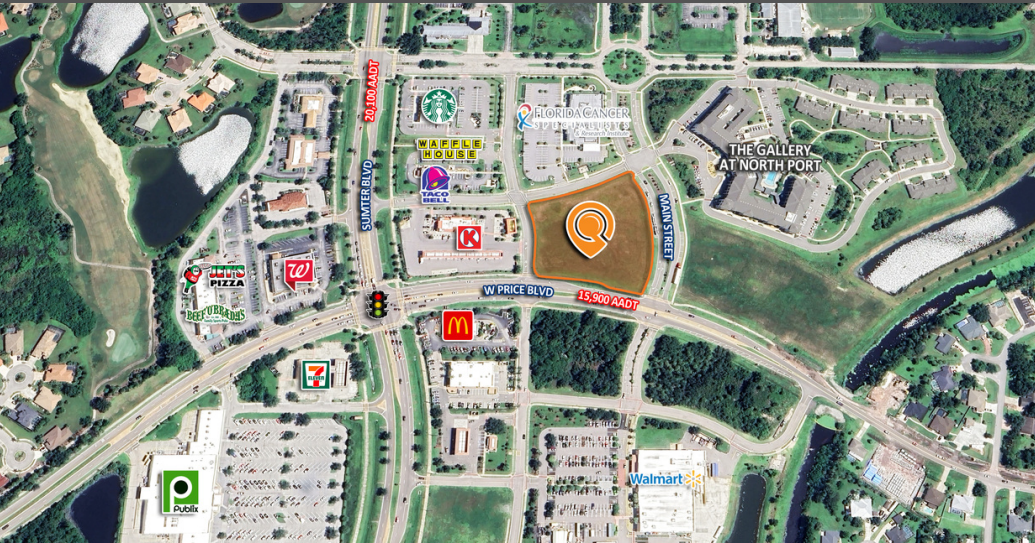
HERON CREEK TOWNE CENTER RETAIL PADS

1090 Grand Venture Dr | North Port, FL 34286
Retail Pads for Ground Lease or Build-to-Suit

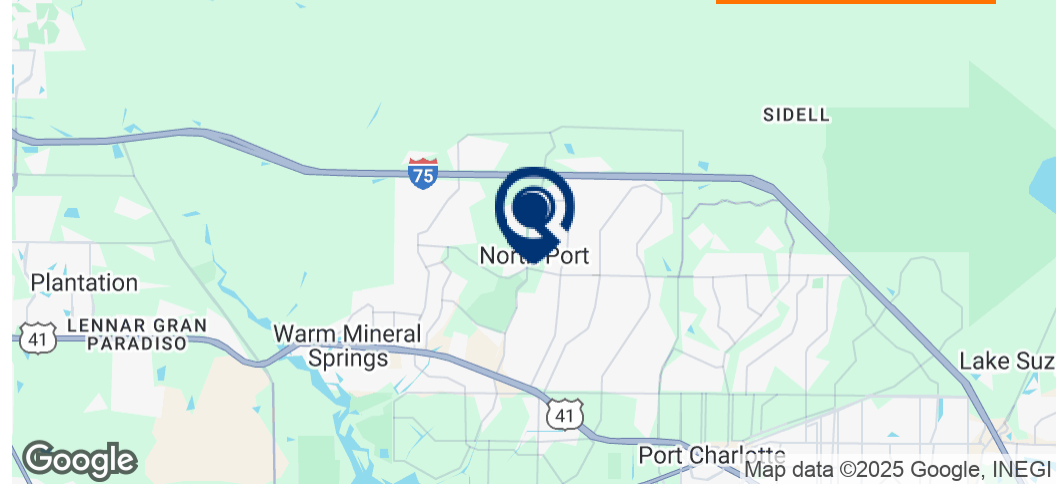


LQ Commercial
REAL ESTATE SERVICES

LQCRE.COM



GOOGLE TOUR



CALL FOR
RATES



1-3 ACRES
LOT SIZE

- 1 - 3 AC retail pads for ground lease or build-to-suit in North Port, FL
- Heron Creek Towne Center sees approximately 4.4M annual visits
- Surrounding traffic generators include Publix, Walmart, Walgreens, Cancer Specialists, medical/professional offices, banks, restaurants, and lodging.
- Located in a dense residential area (32,917 homes within 5-miles!)
- Potential Uses: QSR, retail, restaurant, professional services or medical



5-MILE POPULATION

80,822



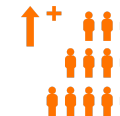
5-MILE MEDIAN AGE

47.9



5-MILE HH INCOME

\$102,191



5-MILE EMPLOYEES

15,281

[PROPERTIES.LQCRE.COM/1566590-LEASE](https://properties.lqcre.com/1566590-LEASE)



1614 Colonial Blvd #101
Fort Myers, FL 33907
LQCRE.COM

Bob Pekol
Senior Associate
D: 239.275.4922 x230
C: 239.872.7777
bpekol@lqcre.com

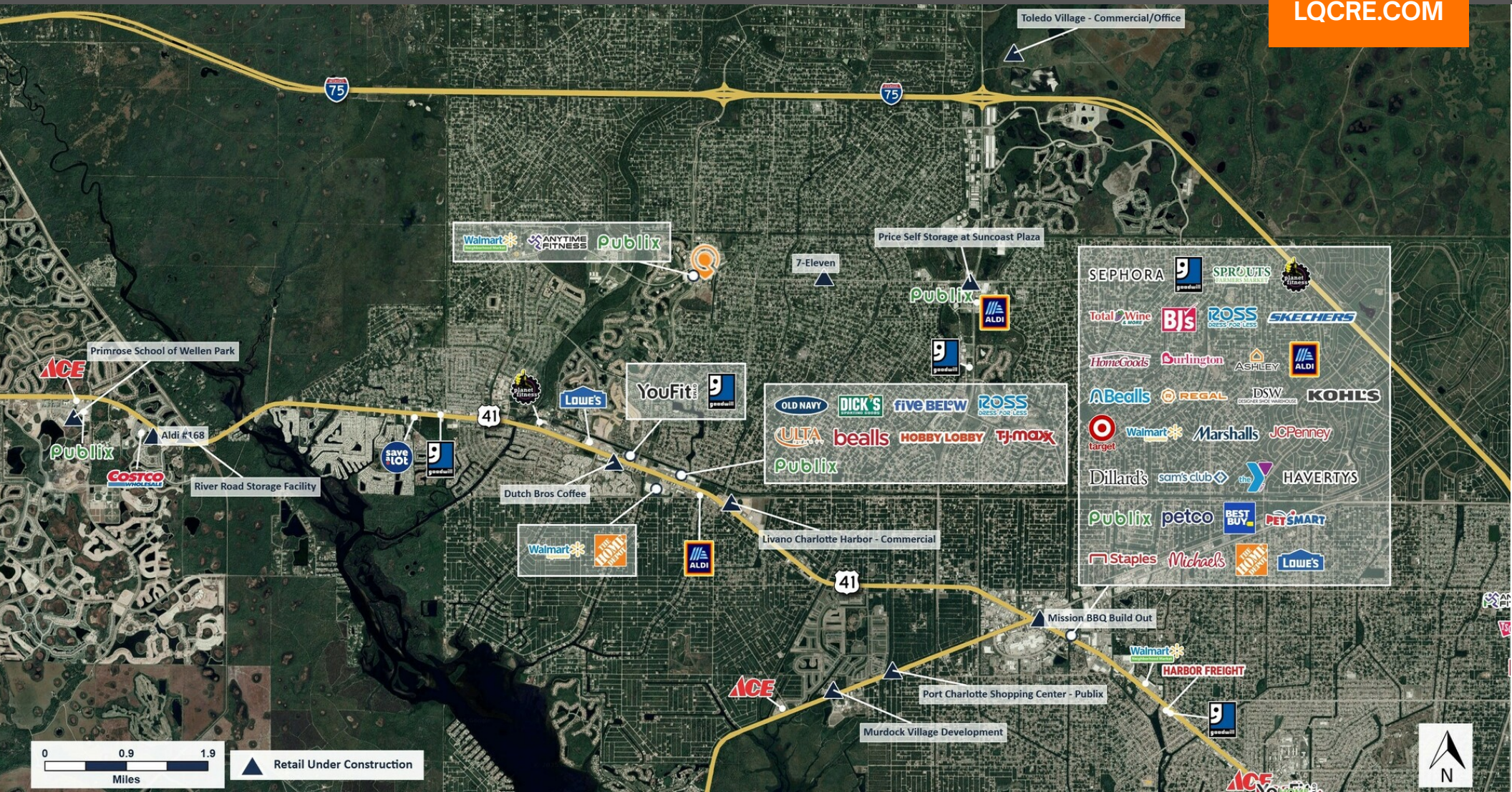
HERON CREEK TOWNE CENTER RETAIL PADS

1090 Grand Venture Dr | North Port, FL 34286
Retail Pads for Ground Lease or Build-to-Suit



LQ Commercial
REAL ESTATE SERVICES

LQCRE.COM



LQ Commercial
REAL ESTATE SERVICES

1614 Colonial Blvd #101
Fort Myers, FL 33907
LQCRE.COM

Bob Pekol

Senior Associate

D: 239.275.4922 x230

C: 239.872.7777

bpekol@lqcre.com

Information obtained from owner(s) or other sources deemed reliable. We have no reason to doubt its accuracy, but cannot guarantee it. All properties subject to change or withdrawal without notice.