



Crown Pointe Business Park

15851 S Old US 27

Lansing, Michigan 48906

Property Highlights

- 1,250 to 2,500 SF office space available in May 2026
- 8 building Business Campus
- Minutes from downtown Lansing
- Great high traffic location
- Close proximity to the I-69/US-27 interchange

Offering Summary

Available SF: 1,250 - 2,500 SF

| Spaces | Lease Rate | Space Size |
|--------|---------------|------------------|
| 30-315 | \$13.00 SF/yr | 1,250 - 2,500 SF |

For More Information



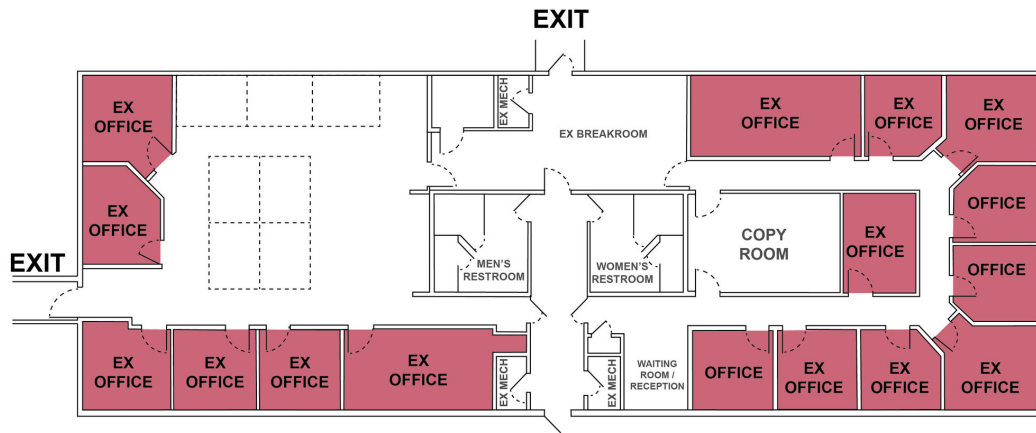
Jeffrey Branch

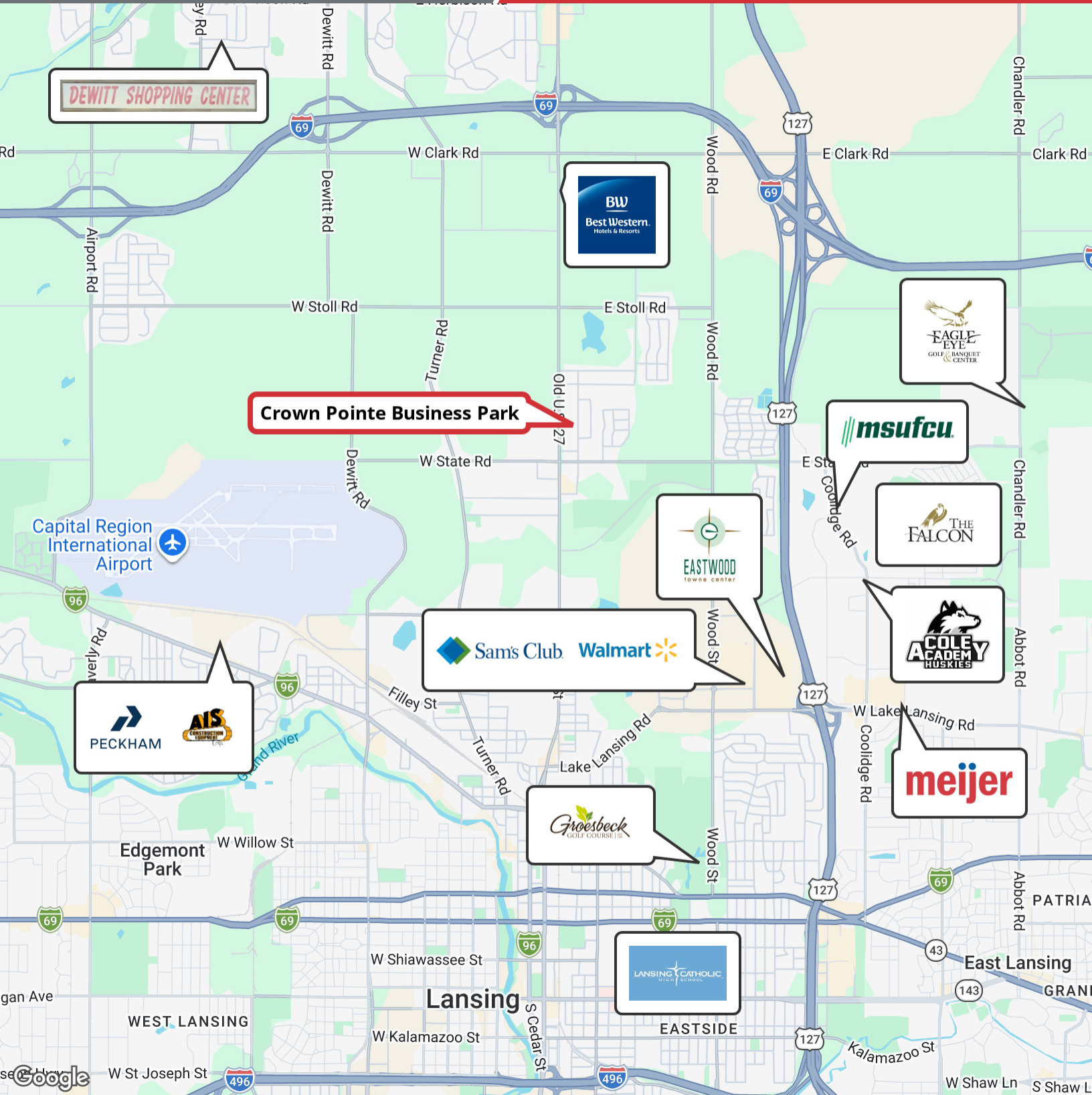
Associate Broker

O: 517 487 9222 | C: 517 899 6368

jbranch@naimidmichigan.com

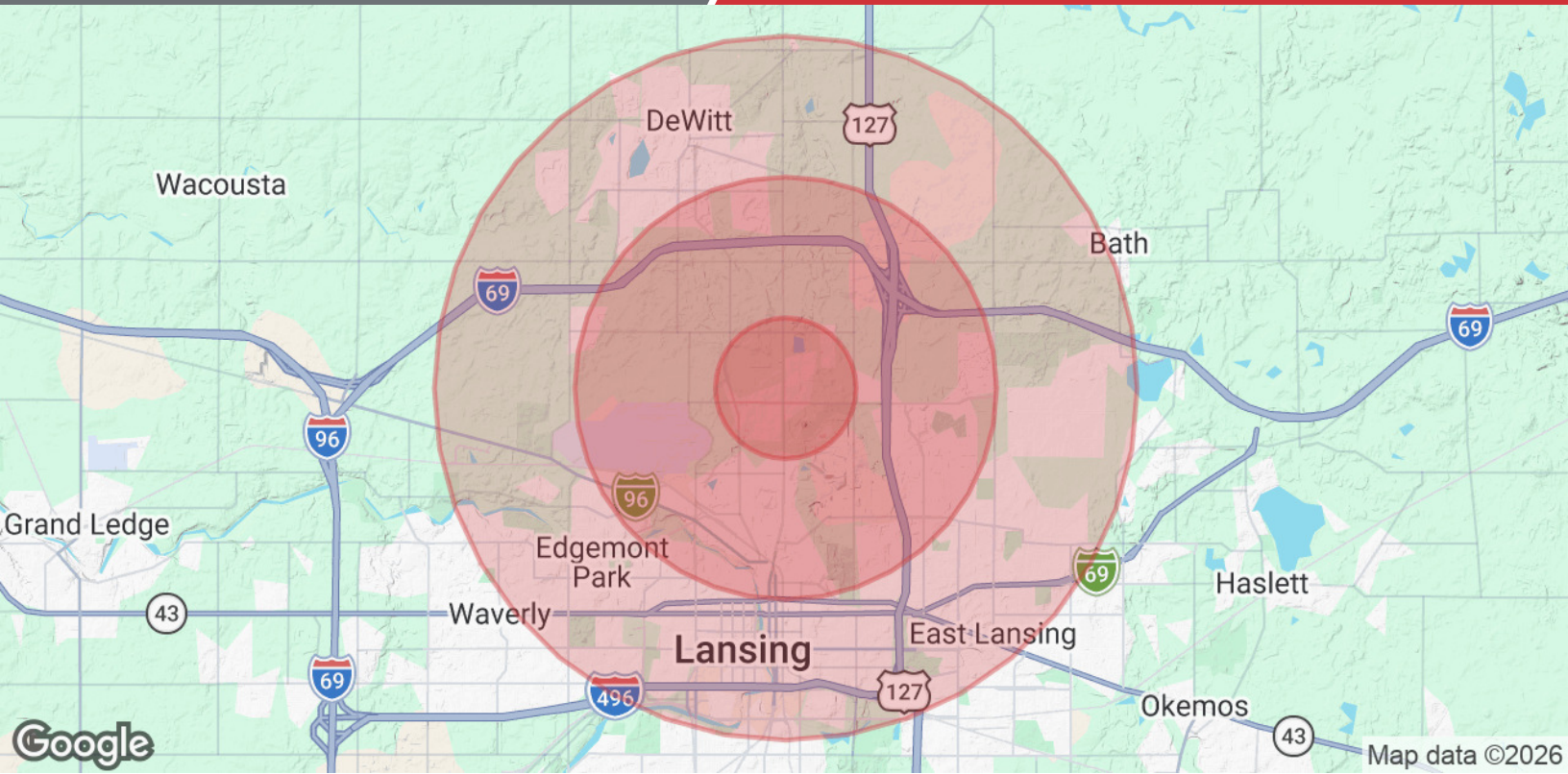
BUILDING 50





NO WARRANTY OR REPRESENTATION, EXPRESS OR IMPLIED, IS MADE AS TO THE ACCURACY OF THE INFORMATION CONTAINED HEREIN, AND THE SAME IS SUBMITTED SUBJECT TO ERRORS, OMISSIONS, CHANGE OF PRICE, RENTAL OR OTHER CONDITIONS. PRIOR SALE, LEASE OR FINANCING, OR WITHDRAWAL WITHOUT NOTICE, AND OF ANY SPECIAL LISTING CONDITIONS IMPOSED BY OUR PRINCIPALS NO WARRANTIES OR REPRESENTATIONS ARE MADE AS TO THE CONDITION OF THE PROPERTY OR ANY HAZARDS CONTAINED THEREIN ARE INTENDED TO BE IMPLIED

2149 Jolly Road, Suite 200
 Okemos, MI 48864
 517 487 9222 tel
 naimidmichigan.com



| Population | 1 Mile | 3 Miles | 5 Miles |
|--------------------------------|---------------|----------------|----------------|
| Total Population | 2,230 | 31,384 | 118,898 |
| Average Age | 48.0 | 36.3 | 34.9 |
| Average Age (Male) | 47.6 | 34.7 | 33.7 |
| Average Age (Female) | 47.8 | 37.6 | 35.6 |
| Households & Income | 1 Mile | 3 Miles | 5 Miles |
| Total Households | 1,082 | 13,989 | 52,363 |
| # of Persons per HH | 2.1 | 2.2 | 2.3 |
| Average HH Income | \$52,918 | \$60,155 | \$65,177 |
| Average House Value | \$122,496 | \$130,037 | \$137,024 |

2020 American Community Survey (ACS)