

2055 LUNA DRIVE

2055 Luna Road
Carrollton, TX 75006

Office/Warehouse For Lease

41,909 SF



Leasing Information:
214.740.3300

Tom Kuhlmann
214.740.3363
tkuhlmann@lpc.com

Michael Peinado
214.740.3356
mpeinado@lpc.com

Gil Stroube
214.740.3427
gstroube@lpc.com

Lincoln

Lincoln Property Company
8111 Douglas Avenue Suite 600
Dallas, TX 75225

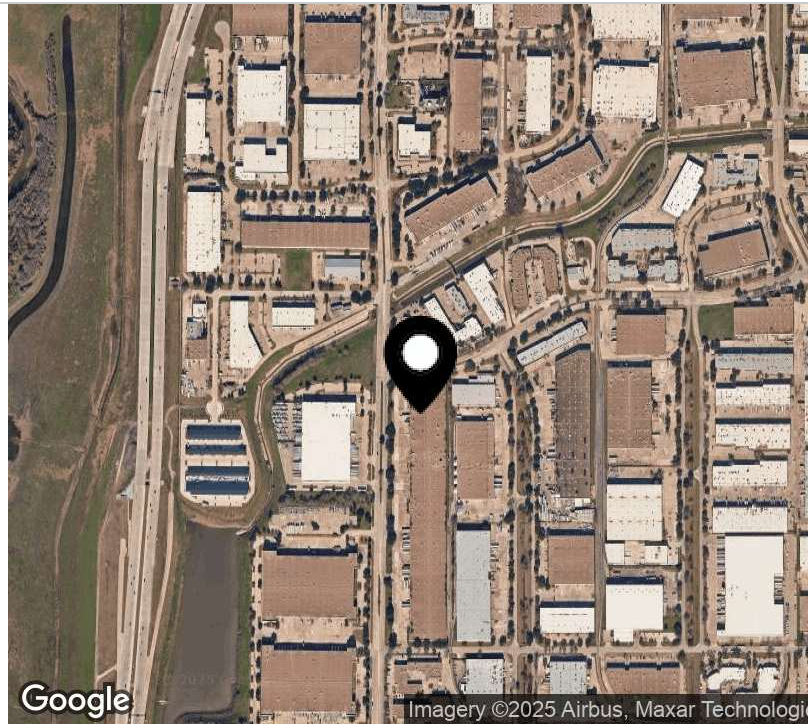
www.lpc.com

2055 LUNA DRIVE

2055 Luna Road | Carrollton, TX 75006

Office/Warehouse For Lease

41,909 SF



Property Highlights

- 24' CH
- Fully Sprinklered
- Existing ramp for grade level accessibility
- Easy access to major thoroughfares
- DART bus stop nearby

Tom Kuhlmann

214.740.3363
tkuhlmann@lpc.com

Michael Peinado

214.740.3356
mpeinado@lpc.com

Gil Stroube

214.740.3427
gstroube@lpc.com

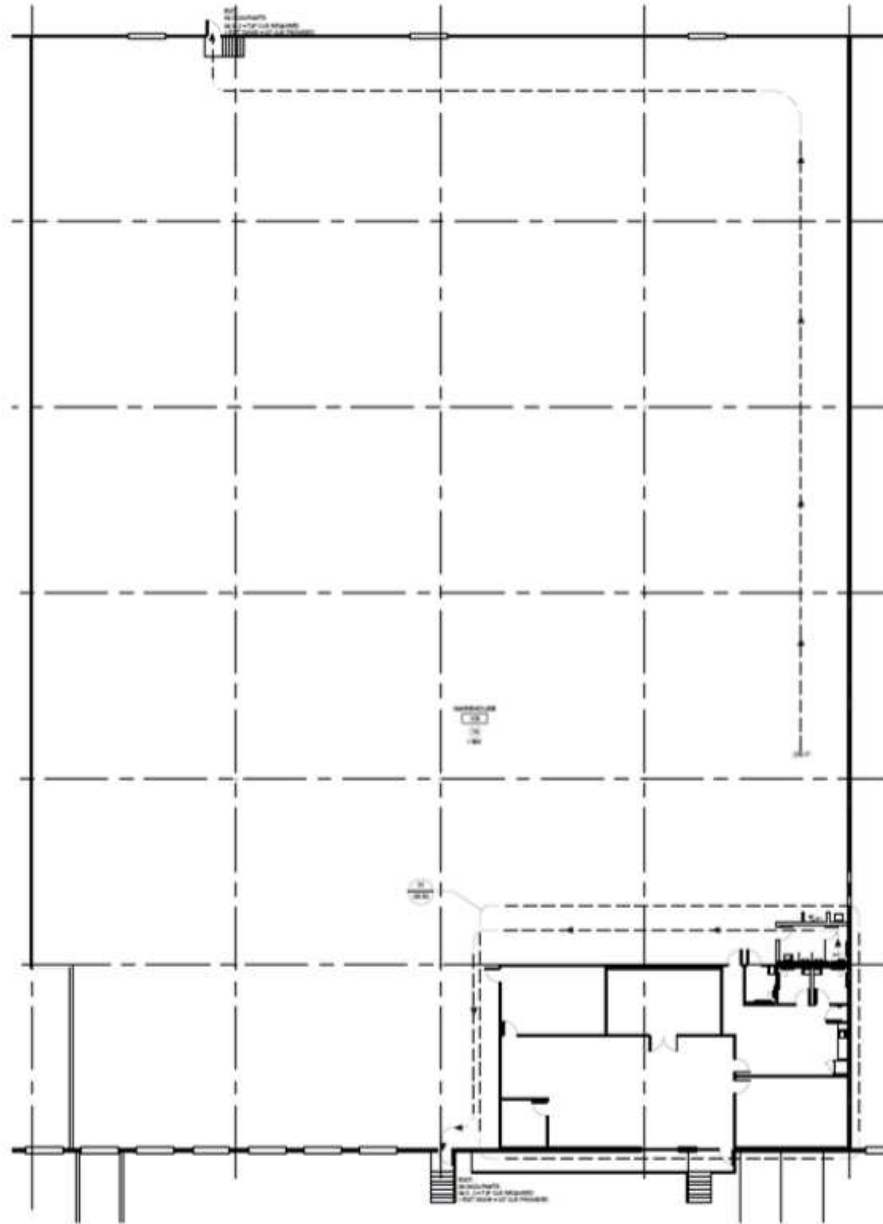
Lincoln

2055 LUNA DRIVE

2055 Luna Road | Carrollton, TX 75006

Suite 156

41,909 SF



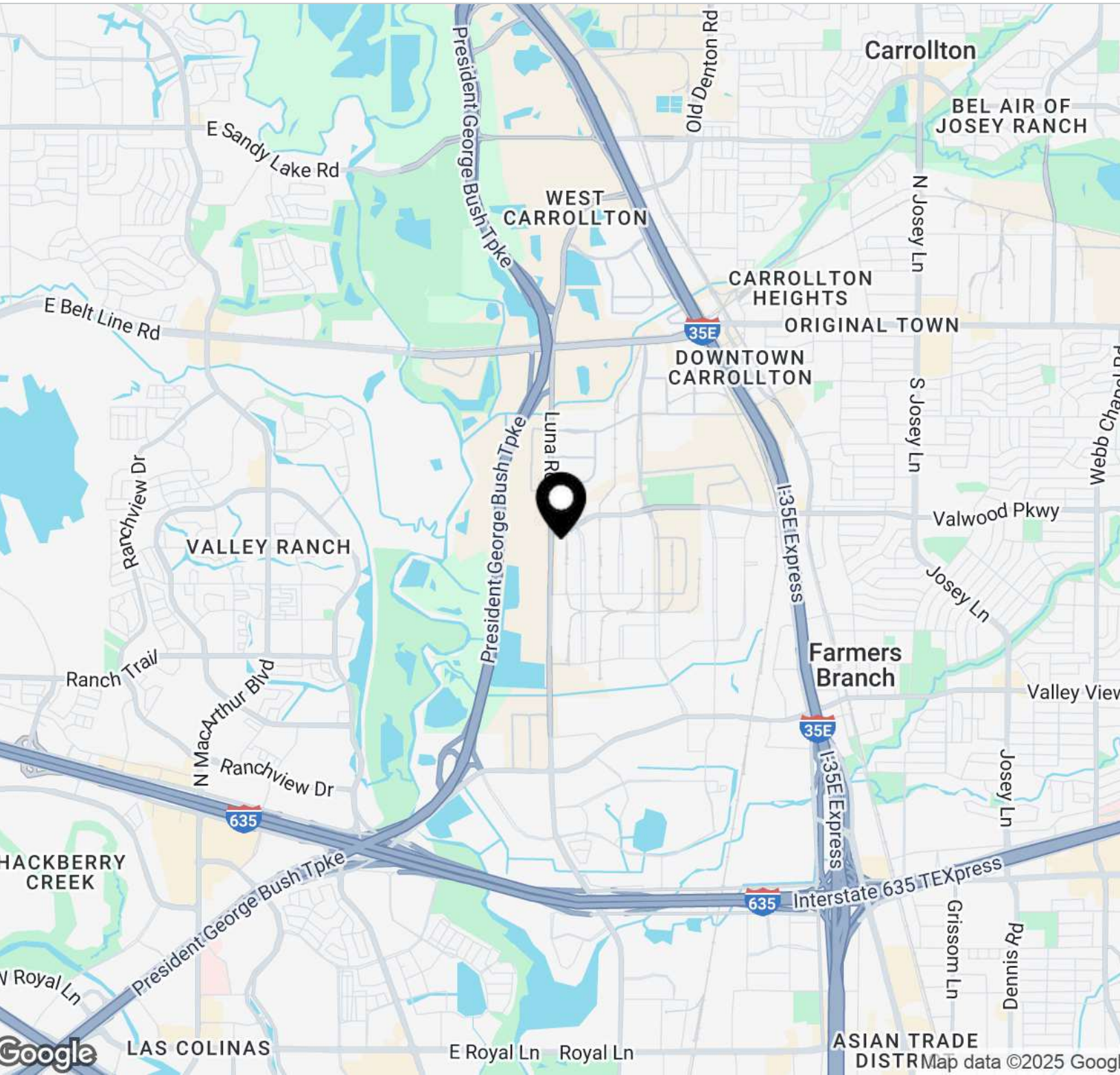
Suite	Size	Lease Rate	Description
Suite 156	41,909 SF	Negotiable	Approximately 3,171 SF office Seven (7) Dock High Doors One (1) Ramp 277/480V 200A 3ph

Tom Kuhlmann **Michael Peinado** **Gil Stroube**
214.740.3363 214.740.3356 214.740.3427
tkuhlmann@lpc.com mpeinado@lpc.com gstroube@lpc.com



2055 LUNA DRIVE

2055 Luna Road | Carrollton, TX 75006



Tom Kuhlmann

214.740.3363
tkuhlmann@lpc.com

Michael Peinado

214.740.3356
mpeinado@lpc.com

Gil Stroube

214.740.3427
gstroube@lpc.com

Lincoln



2055 LUNA DRIVE

2055 Luna Road
Carrollton, TX 75006

Leasing Information:
214.740.3300

Tom Kuhlmann
214.740.3363
tkuhlmann@lpc.com

Michael Peinado
214.740.3356
mpeinado@lpc.com

Gil Stroube
214.740.3427
gstroube@lpc.com

Lincoln

Lincoln Property Company
8111 Douglas Avenue Suite 600
Dallas, TX 75225

www.lpc.com