

# 1101

PASO ROBLES ST.  
PASO ROBLES, CA

**FOR SALE  
OR LEASE**



**MARTY INDVIK**

mindvik@lee-associates.com  
D 805.440.6861  
CalDRE: #0961882

**ALEX OLSEN**

aolsen@lee-associates.com  
D 805.218.5766  
CalDRE: #01126609

**AUSTIN CAVINESS**

acaviness@lee-associates.com  
D 530.680.2769  
CalDRE: #02237273



All information furnished regarding property for sale, rental or financing is from sources deemed reliable, but no warranty or representation is made to the accuracy thereof and same is submitted to errors, omissions, change of price, rental or other conditions prior to sale, lease or financing or withdrawal without notice. No liability of any kind is to be imposed on the broker herein.

## PROPERTY OVERVIEW

Position your business in a freshly renovated flex/industrial property offering good visibility and convenient access to Highway 101.

The property offers  $\pm 2,500$  SF to  $\pm 10,350$  SF of versatile space suitable for a wide range of industrial, service, or flex users. The building features four roll-up doors, functional office space, and direct Paso Robles Street frontage, providing strong exposure and signage opportunities.

A fenced and newly paved yard enhances functionality for storage, fleet vehicles, or outdoor operations. The site also offers excellent Paso Robles Street signage opportunity.

**Sale Price:**  
\$3,260,250 (\$315/SF)

**Lease Rate:**  
\$1.49/SF NNN (\$0.30/SF)

## Highlights:

- $\pm 2,500$  SF to  $\pm 10,350$  SF available
- Freshly renovated
- Four (4) roll-up doors
- Fenced, newly paved yard & parking
- Paso Robles Street frontage
- Strong signage opportunity
- Brand new LED lighting in each unit



Ideal for owner-users, contractors, distributors, or service businesses seeking a highly functional space in a prime Paso Robles location.

### MARTY INDVIK

mindvik@lee-associates.com  
D 805.440.6861  
CalDRE: #0961882

### ALEX OLSEN

aolsen@lee-associates.com  
D 805.218.5766  
CalDRE: #01126609

### AUSTIN CAVINESS

acaviness@lee-associates.com  
D 530.680.2769  
CalDRE: #02237273



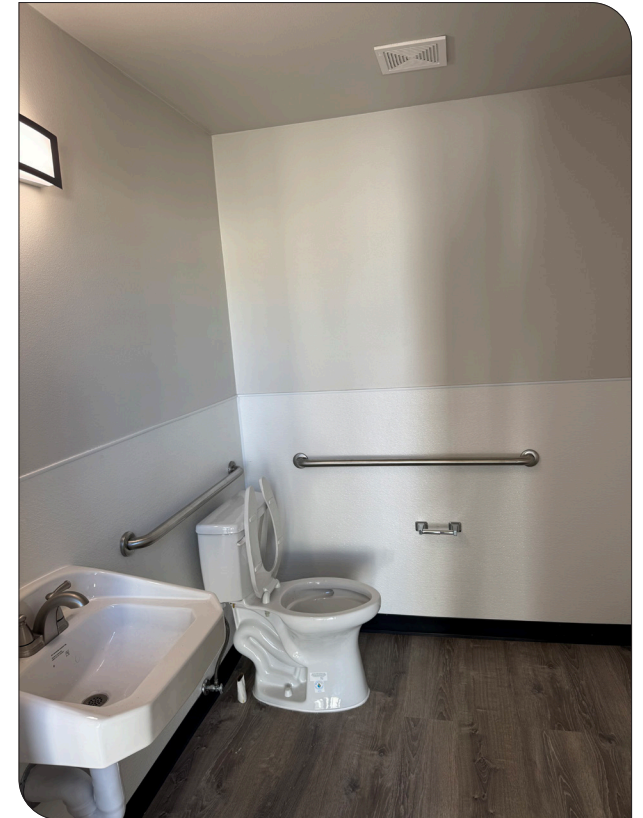
All information furnished regarding property for sale, rental or financing is from sources deemed reliable, but no warranty or representation is made to the accuracy thereof and same is submitted to errors, omissions, change of price, rental or other conditions prior to sale, lease or financing or withdrawal without notice. No liability of any kind is to be imposed on the broker herein.

## INTERIOR PHOTOS



All information furnished regarding property for sale, rental or financing is from sources deemed reliable, but no warranty or representation is made to the accuracy thereof and same is submitted to errors, omissions, change of price, rental or other conditions prior to sale, lease or financing or withdrawal without notice. No liability of any kind is to be imposed on the broker herein.

## INTERIOR PHOTOS



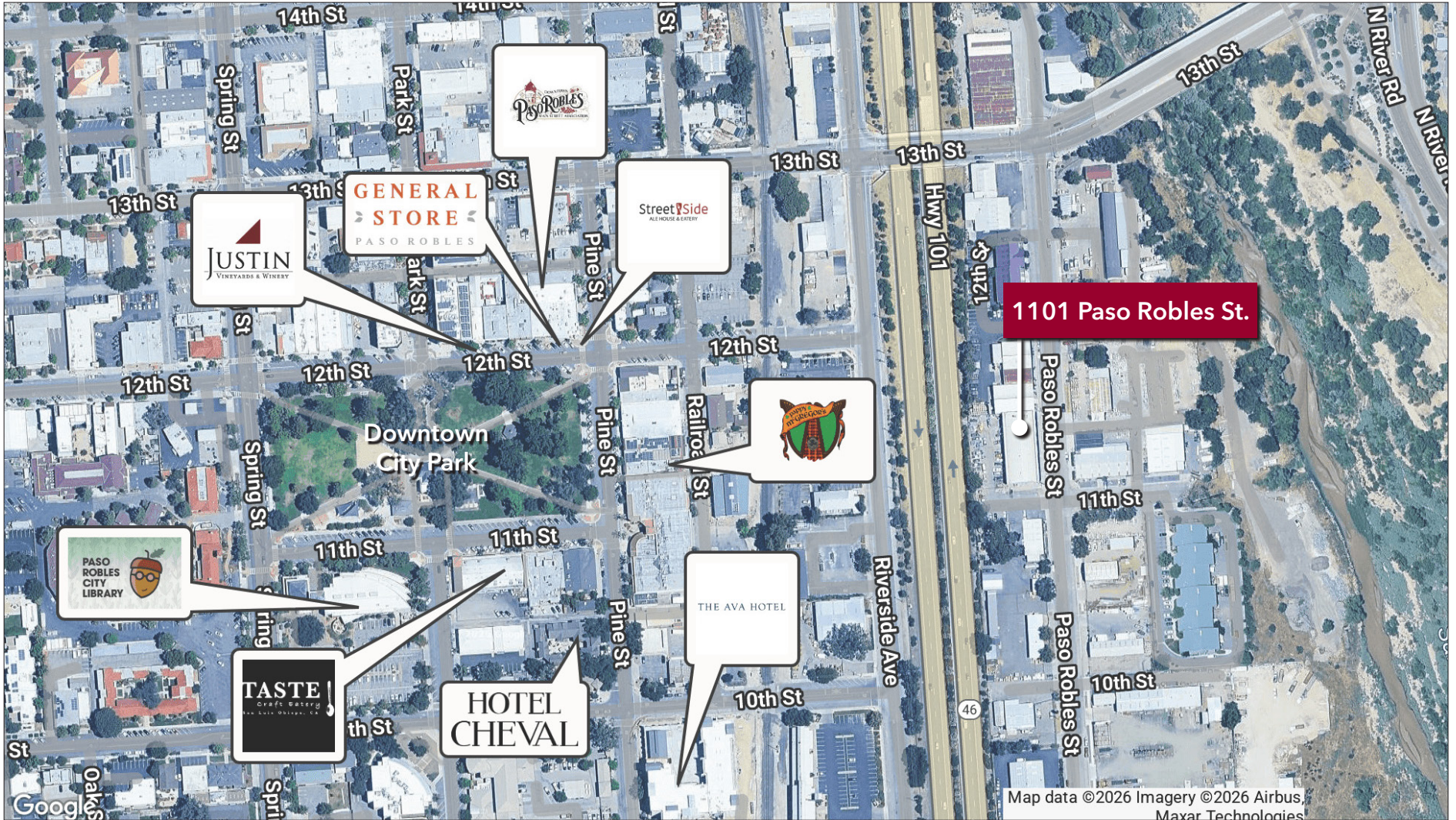
All information furnished regarding property for sale, rental or financing is from sources deemed reliable, but no warranty or representation is made to the accuracy thereof and same is submitted to errors, omissions, change of price, rental or other conditions prior to sale, lease or financing or withdrawal without notice. No liability of any kind is to be imposed on the broker herein.

AERIAL



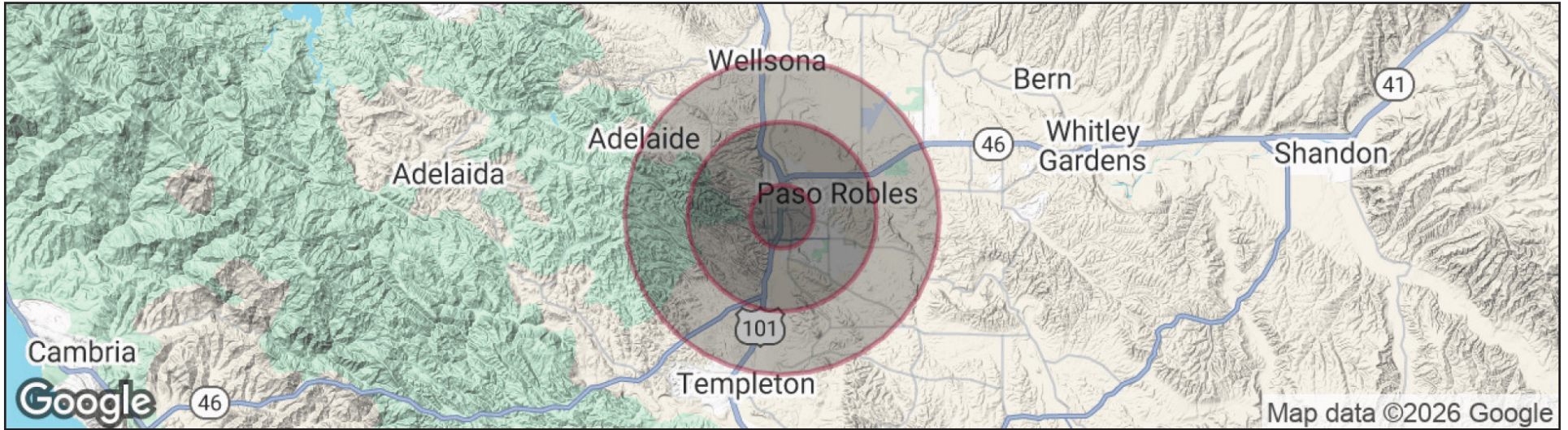
All information furnished regarding property for sale, rental or financing is from sources deemed reliable, but no warranty or representation is made to the accuracy thereof and same is submitted to errors, omissions, change of price, rental or other conditions prior to sale, lease or financing or withdrawal without notice. No liability of any kind is to be imposed on the broker herein.

## RETAIL MAP



All information furnished regarding property for sale, rental or financing is from sources deemed reliable, but no warranty or representation is made to the accuracy thereof and same is submitted to errors, omissions, change of price, rental or other conditions prior to sale, lease or financing or withdrawal without notice. No liability of any kind is to be imposed on the broker herein.

## DEMOGRAPHICS



RADIUS DEMOGRAPHICS	1 MILE	3 MILES	5 MILES
<b>POPULATION</b>			
Total Population	8,874	32,816	39,905
Average Age	41	41	42
Average Age (Male)	39	40	40
Average Age (Female)	42	42	43
<b>HOUSEHOLDS &amp; INCOME</b>			
Total Households	3,455	12,119	14,817
# of Persons per HH	2.6	2.7	2.7
Average HH Income	\$108,369	\$109,868	\$113,666
Average House Value	\$768,545	\$752,063	\$774,713

*Demographics data derived from AlphaMap*

All information furnished regarding property for sale, rental or financing is from sources deemed reliable, but no warranty or representation is made to the accuracy thereof and same is submitted to errors, omissions, change of price, rental or other conditions prior to sale, lease or financing or withdrawal without notice. No liability of any kind is to be imposed on the broker herein.



COMMERCIAL REAL ESTATE SERVICES

**LOCAL EXPERTISE. INTERNATIONAL REACH. WORLD CLASS.**

Lee & Associates, the largest broker-owned firm in North America, has been providing seamless, consistent execution and value-driven market-to-market services for our clients since 1979.

Our real estate services are tailored to exceed the needs of our local, national, and international clients by combining the latest technology, resources, and market intelligence with over 40 years of expertise to optimize results.

**MARTY INDVIK**

805.440.6861

[mindvik@lee-associates.com](mailto:mindvik@lee-associates.com)

License ID# 0961882

**ALEX OLSEN**

805.218.5766

[aolsen@lee-associates.com](mailto:aolsen@lee-associates.com)

License ID# 011226609

**AUSTIN CAVINESS**

530.680.2769

[acaviness@lee-associates.com](mailto:acaviness@lee-associates.com)

License ID# 02237273

Central California, Inc. -  
Lee & Associates  
Corporate ID #02215506  
A Member of the Lee & Associates  
Group of Companies  
5401 Business Park South, Suite 122 & 123  
Bakersfield, CA 93309

All information furnished regarding property for sale, rental or financing is from sources deemed reliable, but no warranty or representation is made to the accuracy thereof and same is submitted to errors, omissions, change of price, rental or other conditions prior to sale, lease or financing or withdrawal without notice. No liability of any kind is to be imposed on the broker herein.

668 Marsh St, Unit 3 | San Luis Obispo, CA 93401 | 805.962.6700 | [lee-associates.com/centralca](http://lee-associates.com/centralca)

