

FOR LEASE

17,936 sq ft

495 March Road, Suite 200
Kanata, ON

More than just space.



KRP Properties
555 Legget Drive, Suite 300
Ottawa, ON K2K 2X3

Linda Sprung, Vice President, Leasing & Marketing
613.591.0594 x3280
lsprung@krpproperties.com

TURNKEY
READY

17,936 sq ft

495 March Road, Suite 200
Kanata, ON



GREAT
LOCATION

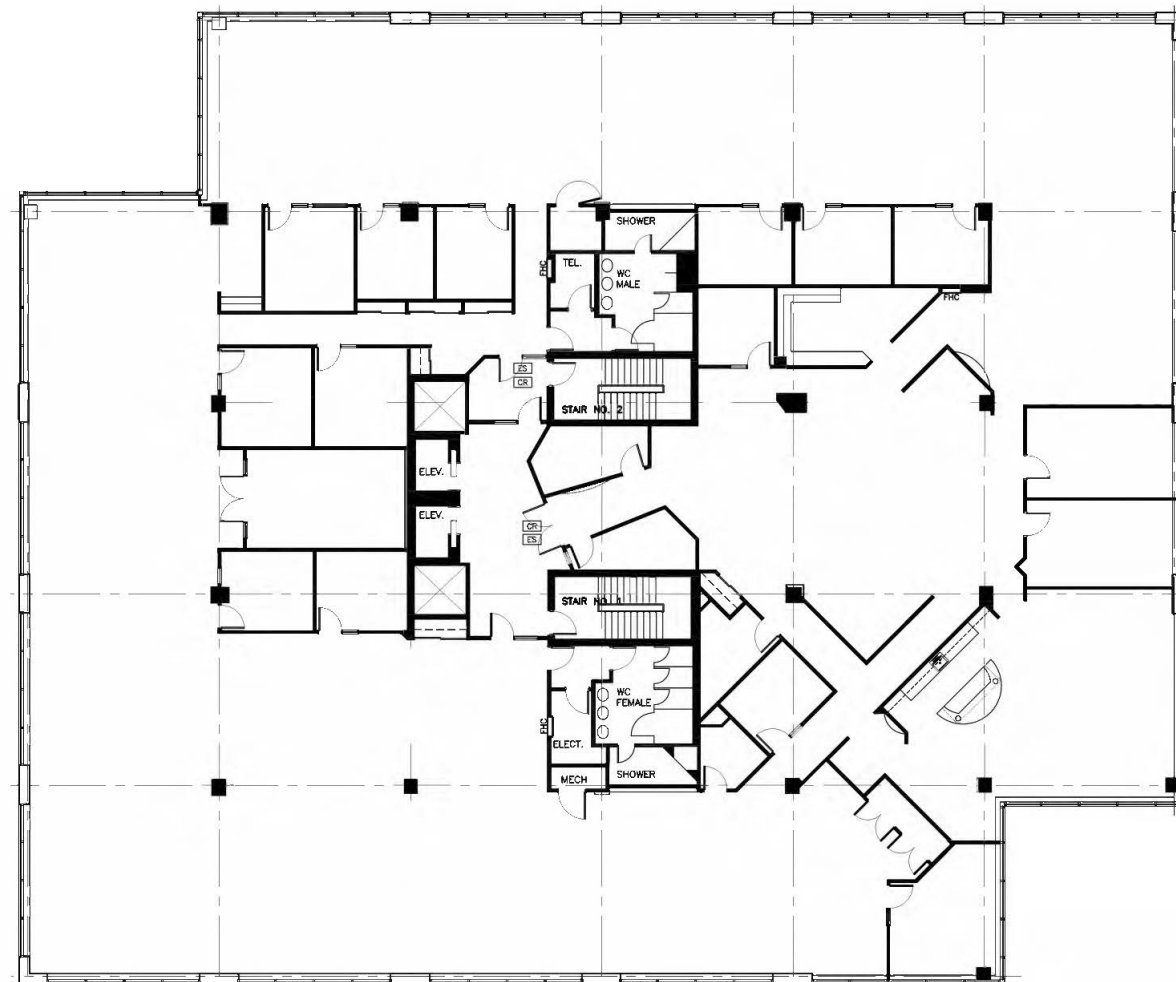
17,936 sq ft

495 March Road, Suite 200
Kanata, ON



PROPERTY FEATURES

Full Floor Available	EV Charging Station Onsite
Spacious Kitchen and Dining Area	IT Room
Bright Inviting Space with Great Views	Ample Onsite Free Parking
Private Washrooms and Showers	Pylon Signage Opportunities Available
Secured 24/7 Building and Suite Access	Local Discounts with KRP Advantage Card



*Operating costs and taxes: \$16.39 / sq ft (estimate for 2025)



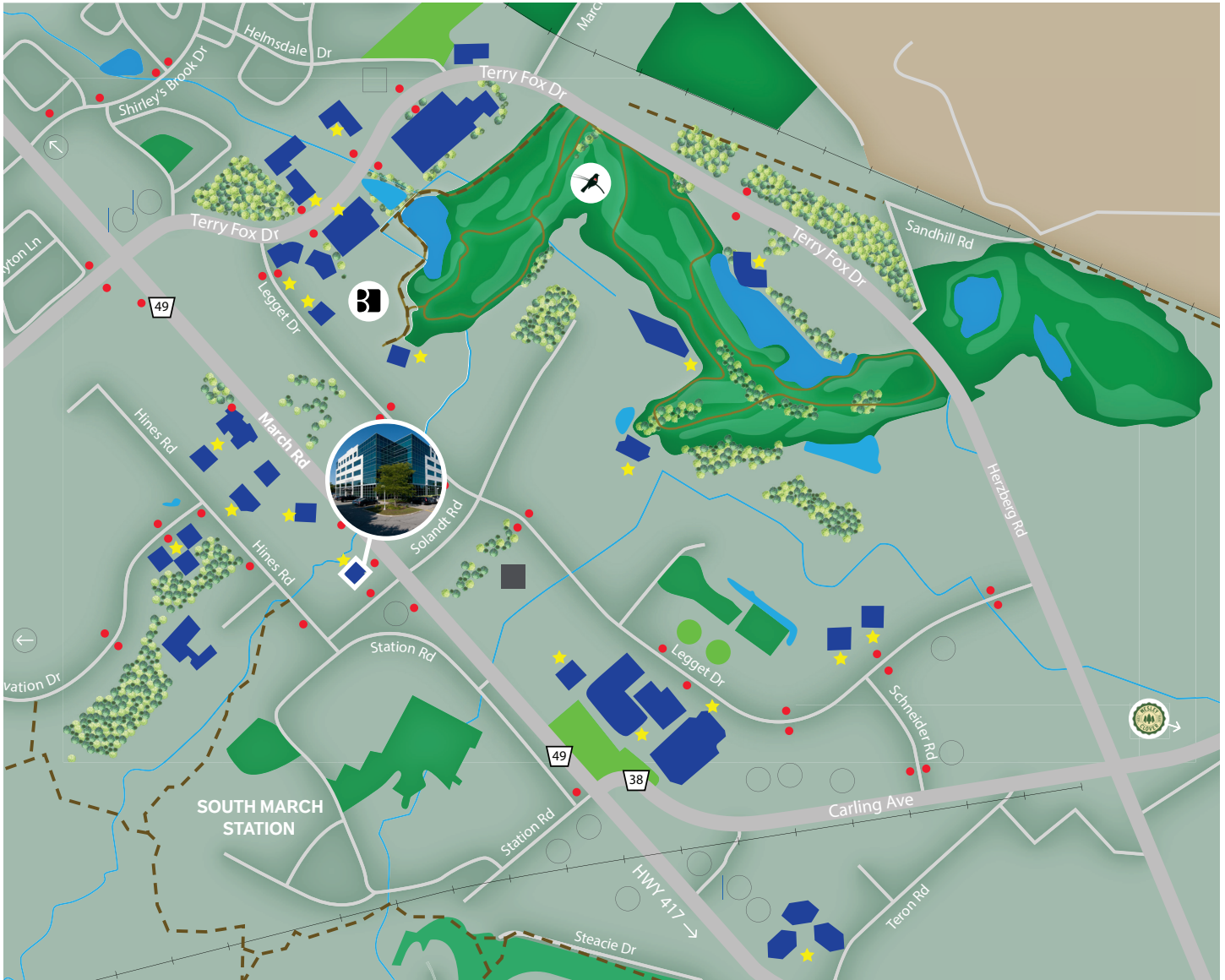
“ Large second floor of beautiful office tower in desirable Kanata North. This inviting suite boasts a spacious kitchen, and private washrooms and showers. Move in ready!





SURROUNDING AMENITIES

17,936 sq ft

495 March Road, Suite 200
Kanata, ON



AMENITIES

- | | | |
|--------------------------------------------------------------------------------------------------------------------------|-------------------------------------------------------------------------------------------------------------|------------------------------------------------------------------------------------------------------------------|
|  KRP Buildings |  KRP Family Centre |  EV Charging Stations |
|  The Marshes Golf Club |  KRP Soccer Fields |  OC Transpo Stops |
|  Brookstreet Hotel and Au Naturel Spa |  KRP Volleyball Courts |  Walking and Cycling Trails |
|  Wesley Clover Parks |  The Hub Community Space |  Local Restaurants |