

# For Sale

**NAIDESCO**

## King's House Retreat Center

700 N 66th St, Belleville, IL 62223



### Property Highlights



**For Sale**  
34,500 SF on 47 AC



**Former King's House**  
Retreat Center



**Located 20 Minutes from**  
Downtown St. Louis



**NEW Sale Price:**  
\$2,950,000

For more information, please contact:



**Tony Salerno**

d (314) 994 - 2322

c (314) 703 - 6400

tsalerno@naidesco.com

**NAIDESCO**

8112 Maryland Ave, Suite 300

St. Louis, MO 63105

(314) 994 - 4800

[naidesco.com](http://naidesco.com)

## Property Features

### First Time Available in Nearly 90 Years | 47± Acres & 34,500 SF Retreat Center

- 47± wooded acres featuring the King's House Retreat Center
- Adjacent to a county-owned conservation area
- Just 20 minutes from Downtown St. Louis
- Currently zoned RR-1 Residential in St. Clair County
- Ideal for a retreat center, senior living, rehabilitation facility, group home, or residential redevelopment

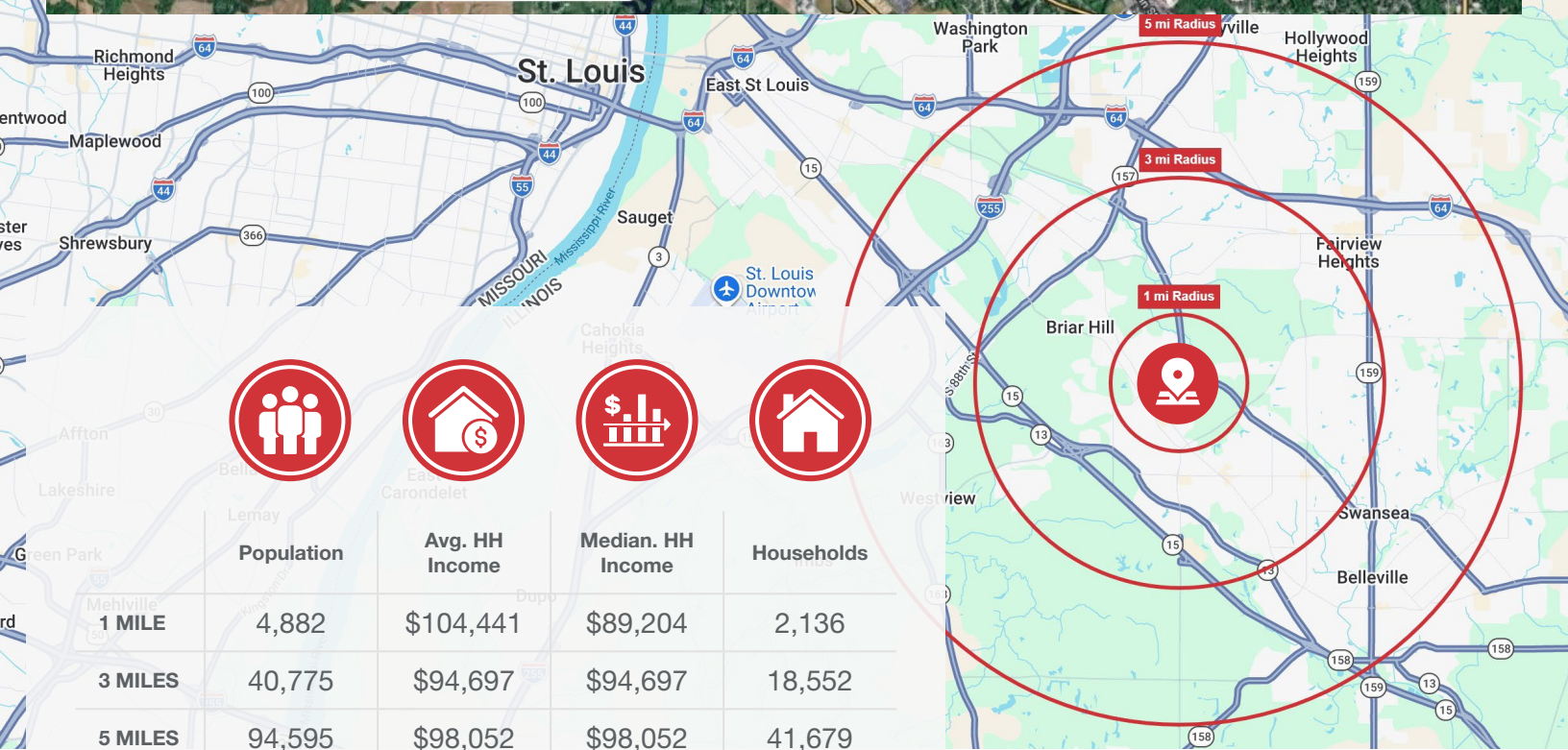
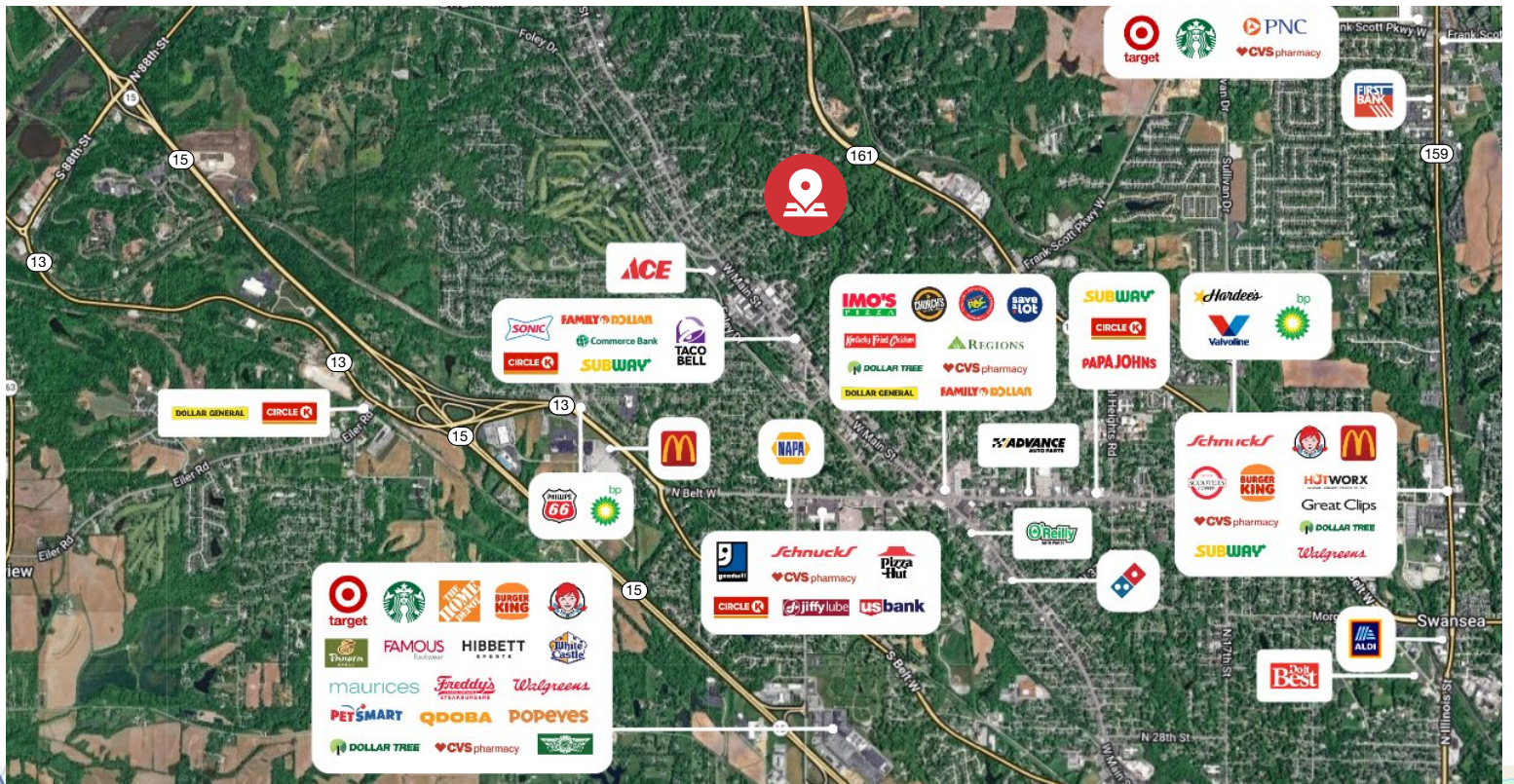
 **NEW Sale Price: \$2,950,000**

### Retreat Center | 34,500 SF

- Multiple conference rooms and offices
- Several dining areas and a full commercial kitchen
- Three-story, elevator-served dormitory with 62 private rooms and bathrooms
- Two detached residences/group homes
- Multiple garages and storage buildings
- Approximately 65 parking spaces







**Tony Salerno**

d (314) 994 - 2322  
 c (314) 703 - 6400  
 tsalerno@naidesco.com



**NAIDESCO**

8112 Maryland Ave, Suite 300  
 St. Louis, MO 63105  
 (314) 994 - 4800  
[naidesco.com](http://naidesco.com)

No warranty or representation, express or implied, is made as to the accuracy of the information contained herein, and the same is submitted subject to errors, omissions, changes in price, rental, or other conditions, prior sale, lease, or financing, or withdrawal without notice, and any special listing conditions imposed by our principals. No warranties or representations are made as to the condition of the property or any hazards contained therein, nor are any to be implied.