



Mix-Use
Property For Sale

193-14 Jamaica
Avenue

~~\$1,455,880~~
\$1,398,000

For More Information:

Rozita Soomekh- Results Powered by Rozita

Licensed Associate Real Estate Broker Douglas Elliman Commercial -
Long Island 516.344.7185 rozita.soomekh@elliman.com

Zdenka Sandy Peros

Licensed Associate Real Estate Salesperson Douglas Elliman Real
Estate Office: 516.681.2600 Mobile: 516.946.5530
ZdenkaSandy.Peros@elliman.com

 **Douglas Elliman**
Commercial

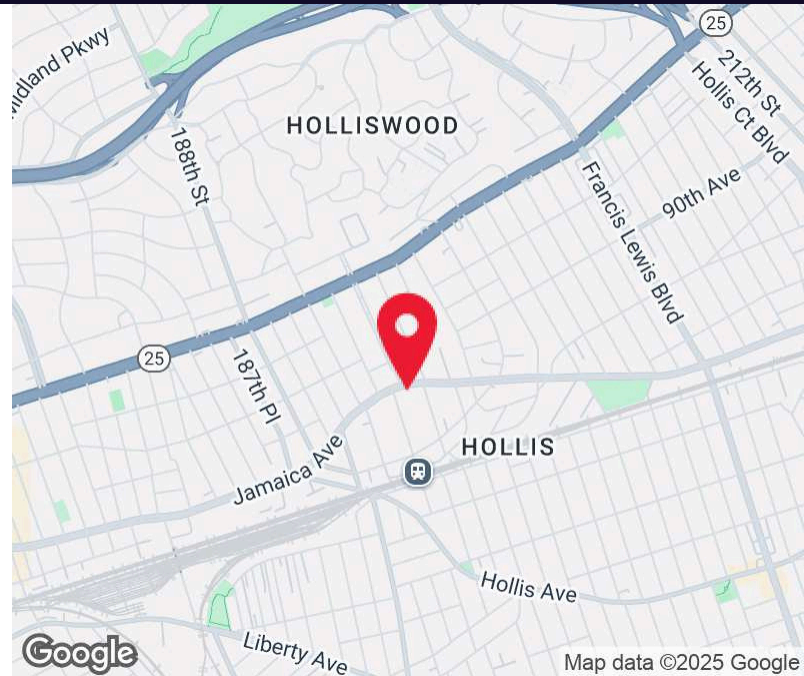
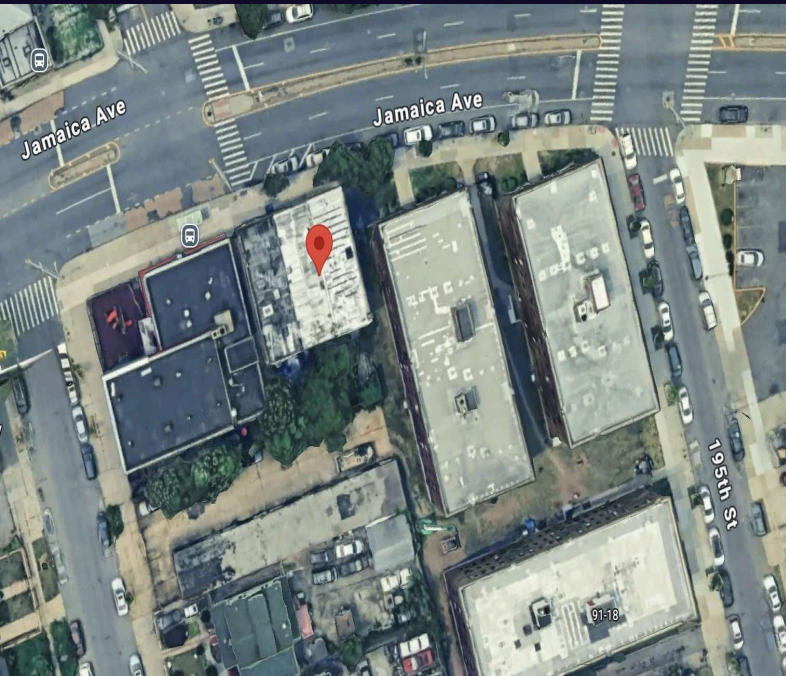
WWW.ELLIMANCOMMERCIAL.COM

THE PROPERTY CONTAINED WITHIN THIS DOCUMENT IS BEING EXCLUSIVELY REPRESENTED BY DOUGLAS ELLIMAN REAL ESTATE COMMERCIAL DIVISION, 550 SMITHTOWN BYPASS STE. 117 SMITHTOWN, NY 11787631.858.2405©2023DOUGLASELLIMANCOMMERCIAL OFLL.LLC.ALL MATERIAL PRESENTED HEREIN IS INTENDED FOR INFORMATION PURPOSES ONLY. WHILE THIS INFORMATION IS BELIEVED TO BE CORRECT, IT IS REPRESENTED SUBJECT TO ERRORS, OMISSIONS, CHANGES OR WITHDRAWAL WITHOUT NOTICE. ALL PROPERTY INFORMATION, INCLUDING BUT NOT LIMITED TO SQUARE FOOTAGE, ROOM COUNT, ZONING IN THE LISTING SHOULD BE VERIFIED BY YOUR OWN ATTORNEY, ARCHITECT OR ZONING EXPERT. IF YOUR PROPERTY IS CURRENTLY LISTED WITH ANOTHER REAL ESTATE BROKER, PLEASE DISREGARD THIS OFFER. IT IS NOT OUR INTENTION TO SOLICIT THE OFFERINGS OF OTHER REAL ESTATE BROKERS. WE COOPERATE WITH THEM FULLY. EQUAL HOUSING OPPORTUNITY.



Fully Renovated Mixed Use Investment Property For Sale

193-14 Jamaica Avenue Hollis, NY 11423



Offering Summary	
Sale Price:	\$1,398,000
Building Size:	4,400 SF
Lot Size:	1,873 SF
Number of Units:	3
Price / SF:	\$331.80
Cap Rate:	7.84%
Projected NOI:	\$96,400.00
Year Built:	1901
Renovated:	2025

Property Overview

Presenting a prime retail investment opportunity in Hollis, New York. This distinguished property features a 4,400 SF building with three units: two apartments with three bedrooms, two full bathrooms, a brand new kitchen plus new floors and one retail space with a backyard. Originally constructed in 1901, the building underwent a full renovation in 2025, seamlessly blending classic architectural charm with modern amenities. Situated in the vibrant Hollis area, this property presents a strategic and promising investment for retail entrepreneurs seeking a thriving location with strong foot traffic and community appeal. Don't miss this rare opportunity to secure a high-performing investment in a prime commercial location.

Property Highlights

- 4,400 SF building
- Built in 1901
- Renovated in 2025
- New Hot Water Tanks/New Roof

For More Information:

Rozita Soomekh- Results Powered by Rozita

Licensed Associate Real Estate Broker
 Douglas Elliman Commercial - Long Island
 5516.344.7185
 rozita.soomekh@elliman.com

Zdenka Sandy Peros

Licensed Associate Real Estate Salesperson
 Douglas Elliman Real Estate
 Office: 516.681.2600
 Mobile: 516.946.5530
 ZdenkaSandy.Peros@elliman.com



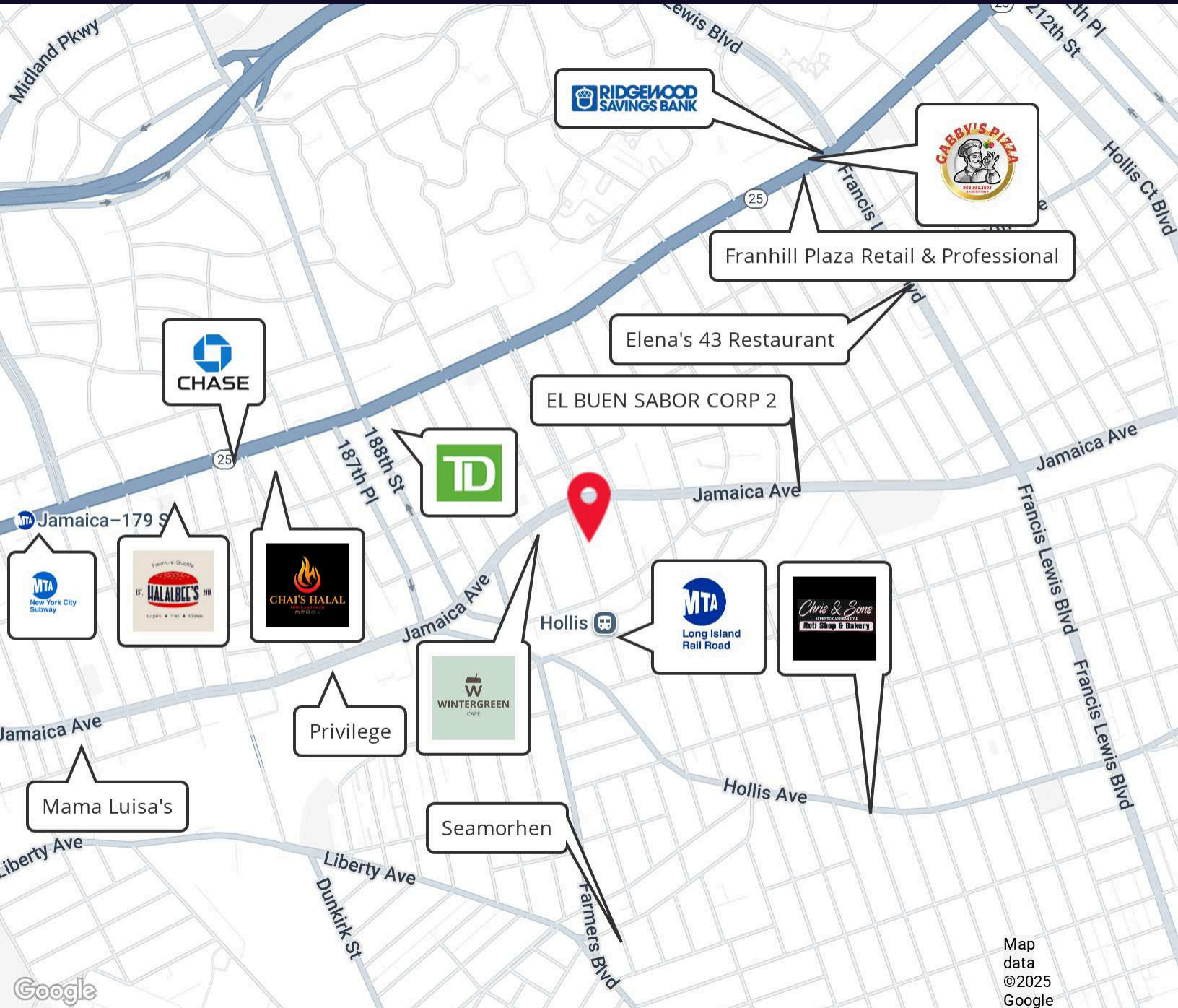
WWW.ELLIMANCOMMERCIAL.COM

THE PROPERTY CONTAINED WITHIN THIS DOCUMENT IS BEING EXCLUSIVELY REPRESENTED BY DOUGLAS ELLIMAN REAL ESTATE COMMERCIAL DIVISION, 550 SMITHTOWN BYPASS STE. 117 SMITHTOWN, NY 11787 631.859.2485 ©2025 DOUGLAS ELLIMAN COMMERCIAL OF LLC. ALL MATERIAL PRESENTED HEREIN IS INTENDED FOR INFORMATION PURPOSES ONLY. WHILE THIS INFORMATION IS BELIEVED TO BE CORRECT, IT IS REPRESENTED SUBJECT TO ERRORS, OMISSIONS, CHANGES OR WITHDRAWAL WITHOUT NOTICE. ALL PROPERTY INFORMATION INCLUDING, BUT NOT LIMITED TO SQUARE FOOTAGE, ROOM COUNT, ZONING IN THE LISTING SHOULD BE VERIFIED BY YOUR OWN ATTORNEY, ARCHITECT OR ZONING EXPERT. IF YOUR PROPERTY IS CURRENTLY LISTED WITH ANOTHER REAL ESTATE BROKER, PLEASE DISREGARD THIS OFFER. IT IS NOT OUR INTENTION TO SOLICIT THE OFFERINGS OF OTHER REAL ESTATE BROKERS. WE COOPERATE WITH THEM FULLY. EQUAL HOUSING OPPORTUNITY.



Fully Renovated Mixed Use Investment Property For Sale

193-14 Jamaica Avenue Hollis, NY 11423



Map
data
©2025
Google

For More Information:

Rozita Soomekh - Results Powered by Rozita

Licensed Associate Real Estate Broker
Douglas Elliman Commercial - Long Island
516.344.7185
rozita.soomekh@elliman.com



WWW.ELLIMANCOMMERCIAL.COM

THE PROPERTY CONTAINED WITHIN THIS DOCUMENT IS BEING EXCLUSIVELY REPRESENTED BY DOUGLAS ELLIMAN REAL ESTATE COMMERCIAL DIVISION, 550 SMITHTOWN BYPASS STE. 117 SMITHTOWN, NY 11787 631.859.2485 ©2025 DOUGLAS ELLIMAN COMMERCIAL OF LLC. ALL MATERIAL PRESENTED HEREIN IS INTENDED FOR INFORMATION PURPOSES ONLY. WHILE THIS INFORMATION IS BELIEVED TO BE CORRECT, IT IS REPRESENTED SUBJECT TO ERRORS, OMISSIONS, CHANGES OR WITHDRAWAL WITHOUT NOTICE. ALL PROPERTY INFORMATION INCLUDING, BUT NOT LIMITED TO SQUARE FOOTAGE, ROOM COUNT, ZONING IN THE LISTING SHOULD BE VERIFIED BY YOUR OWN ATTORNEY, ARCHITECT OR ZONING EXPERT. IF YOUR PROPERTY IS CURRENTLY LISTED WITH ANOTHER REAL ESTATE BROKER, PLEASE DISREGARD THIS OFFER. IT IS NOT OUR INTENTION TO SOLICIT THE OFFERINGS OF OTHER REAL ESTATE BROKERS. WE COOPERATE WITH THEM FULLY. EQUAL HOUSING OPPORTUNITY.

Fully Renovated Mixed Use Investment

Property For Sale



193-14 Jamaica Avenue Hollis, NY 11423

	Annual Rent	Occupied	Expire
Store Pharmacy	\$36,000.00	2024	2034
3 Bed/2 Full bath Apt	\$36,000.00	Vacant	-
3 Bed/2 Full Bath Apt	\$36,000.00	Vacant	-

Projected Gross Income \$108,000.00

Insurance \$ 7,000.00

Property Tax \$4,600.00

Projected Net Income \$96,400.00

For More Information:

Rozita Soomekh- Results Powered by Rozita

Licensed Associate Real Estate Broker
Douglas Elliman Commercial - Long Island
516.344.7185
rozita.soomekh@elliman.com

Zdenka Sandy Peros

Licensed Associate Real Estate Salesperson
Douglas Elliman Real Estate
Office: 516.681.2600
Mobile: 516.946.5530
ZdenkaSandy.Peros@elliman.com

 **Douglas Elliman**
Commercial

WWW.ELLIMANCOMMERCIAL.COM

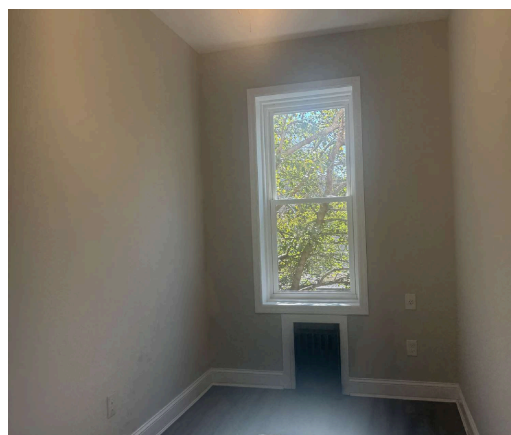
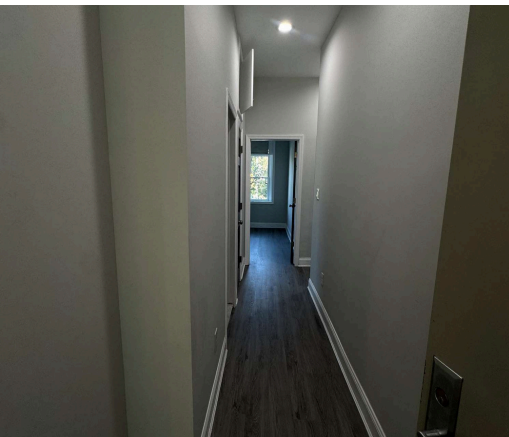
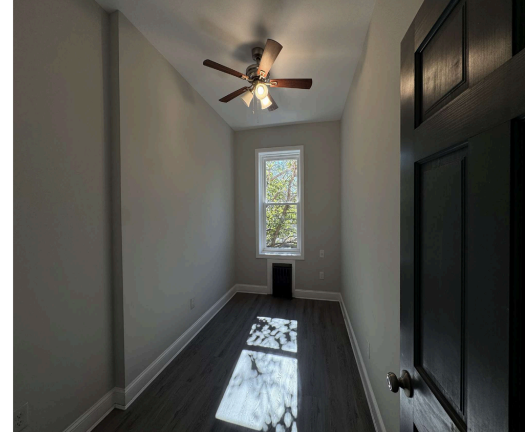
THE PROPERTY CONTAINED WITHIN THIS DOCUMENT IS BEING EXCLUSIVELY REPRESENTED BY DOUGLAS ELLIMAN REAL ESTATE COMMERCIAL DIVISION, 550 SMITHTOWN BYPASS STE. 117 SMITHTOWN, NY 11787 631.859.2455 ©2022 DOUGLAS ELLIMAN COMMERCIAL OF LLC. ALL MATERIAL PRESENTED HEREIN IS INTENDED FOR INFORMATION PURPOSES ONLY. WHILE THIS INFORMATION IS BELIEVED TO BE CORRECT, IT IS REPRESENTED SUBJECT TO ERRORS, OMISSIONS, CHANGES OR WITHDRAWAL WITHOUT NOTICE. ALL PROPERTY INFORMATION INCLUDING, BUT NOT LIMITED TO SQUARE FOOTAGE, ROOM COUNT, ZONING IN THE LISTING SHOULD BE VERIFIED BY YOUR OWN ATTORNEY, ARCHITECT OR ZONING EXPERT. IF YOUR PROPERTY IS CURRENTLY LISTED WITH ANOTHER REAL ESTATE BROKER, PLEASE DISREGARD THIS OFFER. IT IS NOT OUR INTENTION TO SOLICIT THE OFFERINGS OF OTHER REAL ESTATE BROKERS. WE COOPERATE WITH THEM FULLY. EQUAL HOUSING OPPORTUNITY.

Fully Renovated Mixed Use Investment

Property For Sale



193-14 Jamaica Avenue Hollis, NY 11423



For More Information:

Rozita Soomekh- Results Powered by Rozita

Licensed Associate Real Estate Broker
Douglas Elliman Commercial - Long Island
516.344.7185
rozita.soomekh@elliman.com

Zdenka Sandy Peros

Licensed Associate Real Estate Salesperson
Douglas Elliman Real Estate
Office: 516.681.2600
Mobile: 516.946.5530
ZdenkaSandy.Peros@elliman.com

 **Douglas Elliman**
Commercial

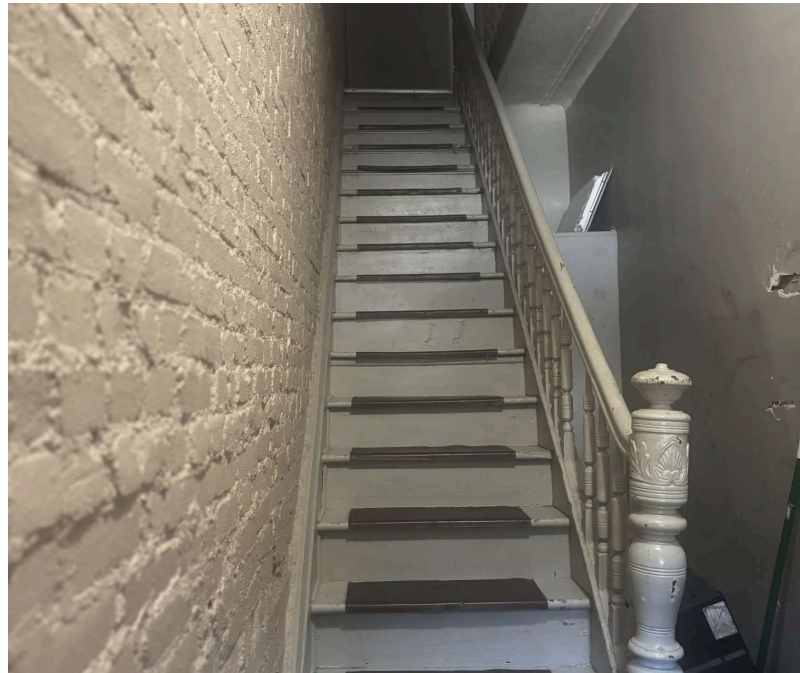
WWW.ELLIMANCOMMERCIAL.COM

THE PROPERTY CONTAINED WITHIN THIS DOCUMENT IS BEING EXCLUSIVELY REPRESENTED BY DOUGLAS ELLIMAN REAL ESTATE COMMERCIAL DIVISION, 550 SMITHTOWN BYPASS STE. 117 SMITHTOWN, NY 11787 631.859.2455 ©2022 DOUGLAS ELLIMAN COMMERCIAL OF LLC. ALL MATERIAL PRESENTED HEREIN IS INTENDED FOR INFORMATION PURPOSES ONLY. WHILE THIS INFORMATION IS BELIEVED TO BE CORRECT, IT IS REPRESENTED SUBJECT TO ERRORS, OMISSIONS, CHANGES OR WITHDRAWAL WITHOUT NOTICE. ALL PROPERTY INFORMATION INCLUDING, BUT NOT LIMITED TO SQUARE FOOTAGE, ROOM COUNT, ZONING IN THE LISTING SHOULD BE VERIFIED BY YOUR OWN ATTORNEY, ARCHITECT OR ZONING EXPERT. IF YOUR PROPERTY IS CURRENTLY LISTED WITH ANOTHER REAL ESTATE BROKER, PLEASE DISREGARD THIS OFFER. IT IS NOT OUR INTENTION TO SOLICIT THE OFFERINGS OF OTHER REAL ESTATE BROKERS. WE COOPERATE WITH THEM FULLY. EQUAL HOUSING OPPORTUNITY.

Fully Renovated Mixed Use Investment Property For Sale



193-14 Jamaica Avenue Hollis, NY 11423



For More Information:

Rozita Soomekh- Results Powered by Rozita

Licensed Associate Real Estate Broker
Douglas Elliman Commercial - Long Island
516.344.7185
rozita.soomekh@elliman.com

Zdenka Sandy Peros

Licensed Associate Real Estate Salesperson
Douglas Elliman Real Estate
Office: 516.681.2600
Mobile: 516.946.5530
ZdenkaSandy.Peros@elliman.com

 **Douglas Elliman**
Commercial

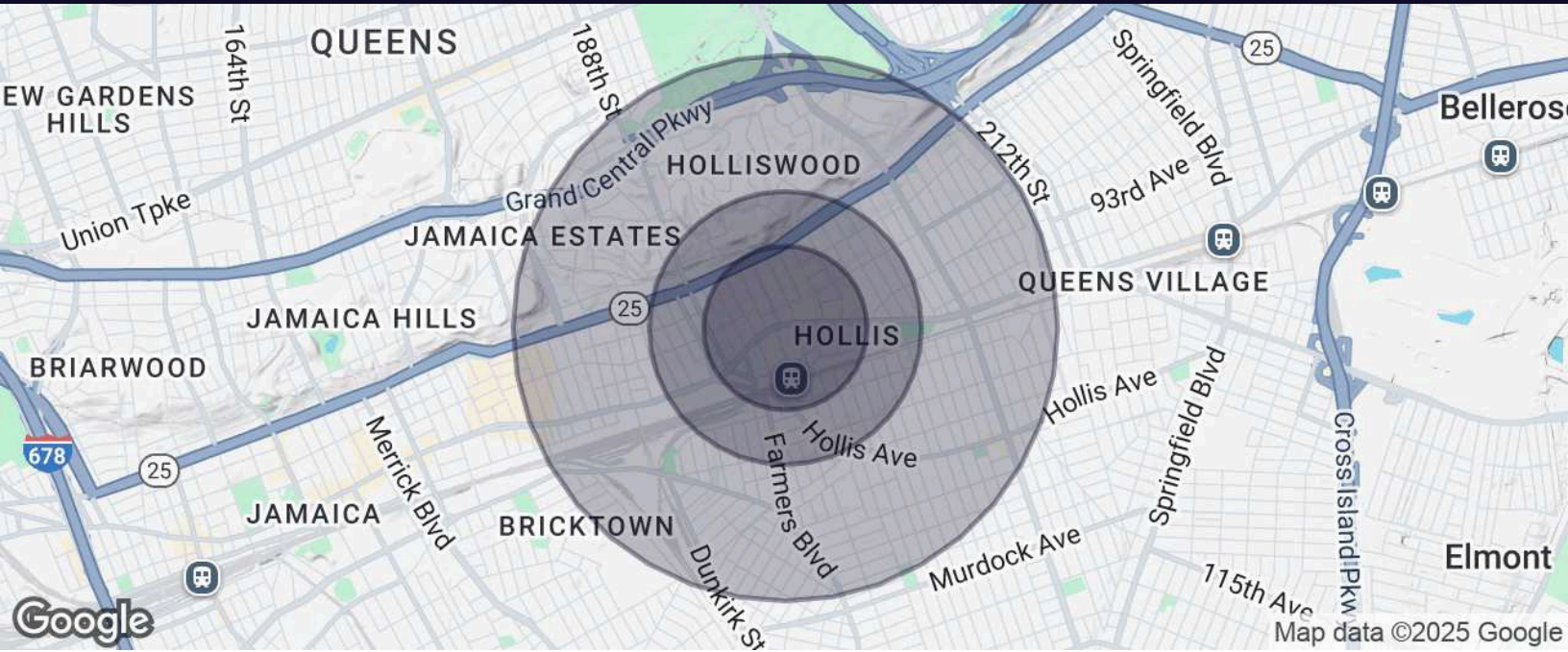
WWW.ELLIMANCOMMERCIAL.COM

THE PROPERTY CONTAINED WITHIN THIS DOCUMENT IS BEING EXCLUSIVELY REPRESENTED BY DOUGLAS ELLIMAN REAL ESTATE COMMERCIAL DIVISION, 550 SMITHTOWN BYPASS STE. 117 SMITHTOWN, NY 11787 631.859.2455 ©2022 DOUGLAS ELLIMAN COMMERCIAL OF LLC. ALL MATERIAL PRESENTED HEREIN IS INTENDED FOR INFORMATION PURPOSES ONLY. WHILE THIS INFORMATION IS BELIEVED TO BE CORRECT, IT IS REPRESENTED SUBJECT TO ERRORS, OMISSIONS, CHANGES OR WITHDRAWAL WITHOUT NOTICE. ALL PROPERTY INFORMATION INCLUDING, BUT NOT LIMITED TO SQUARE FOOTAGE, ROOM COUNT, ZONING IN THE LISTING SHOULD BE VERIFIED BY YOUR OWN ATTORNEY, ARCHITECT OR ZONING EXPERT. IF YOUR PROPERTY IS CURRENTLY LISTED WITH ANOTHER REAL ESTATE BROKER, PLEASE DISREGARD THIS OFFER. IT IS NOT OUR INTENTION TO SOLICIT THE OFFERINGS OF OTHER REAL ESTATE BROKERS. WE COOPERATE WITH THEM FULLY. EQUAL HOUSING OPPORTUNITY.



Fully Renovated Mixed Use Investment Property For Sale

193-14 Jamaica Avenue Hollis, NY 11423



Population	0.3 Miles	0.5 Miles	1 Mile
Total Population	8,114	20,048	68,219
Average Age	41	41	42
Average Age (Male)	40	40	41
Average Age (Female)	43	42	43

Households & Income	0.3 Miles	0.5 Miles	1 Mile
Total Households # of	2,540	5,998	21,118
Persons per HH Average	3.2	3.3	3.2
HH Income Average House	\$99,463	\$106,440	\$112,609
Value	\$904,489	\$827,493	\$782,234

For More Information:

Rozita Soomekh- Results Powered by Rozita

Licensed Associate Real Estate Broker
Douglas Elliman Commercial - Long Island
516.344.7185
rozita.soomekh@elliman.com

Zdenka Sandy Peros

Licensed Associate Real Estate Salesperson
Douglas Elliman Real Estate
Office: 516.681.2600
Mobile: 516.946.5530
ZdenkaSandy.Peros@elliman.com



WWW.ELLIMANCOMMERCIAL.COM

THE PROPERTY CONTAINED WITHIN THIS DOCUMENT IS BEING EXCLUSIVELY REPRESENTED BY DOUGLAS ELLIMAN REAL ESTATE COMMERCIAL DIVISION, 550 SMITHTOWN BYPASS STE. 117 SMITHTOWN, NY 11787 631.859.2465 ©2022 DOUGLAS ELLIMAN COMMERCIAL OF LLC. ALL MATERIAL PRESENTED HEREIN IS INTENDED FOR INFORMATION PURPOSES ONLY. WHILE THIS INFORMATION IS BELIEVED TO BE CORRECT, IT IS REPRESENTED SUBJECT TO ERRORS, OMISSIONS, CHANGES OR WITHDRAWAL WITHOUT NOTICE. ALL PROPERTY INFORMATION INCLUDING, BUT NOT LIMITED TO SQUARE FOOTAGE, ROOM COUNT, ZONING IN THE LISTING SHOULD BE VERIFIED BY YOUR OWN ATTORNEY, ARCHITECT OR ZONING EXPERT. IF YOUR PROPERTY IS CURRENTLY LISTED WITH ANOTHER REAL ESTATE BROKER, PLEASE DISREGARD THIS OFFER. IT IS NOT OUR INTENTION TO SOLICIT THE OFFERINGS OF OTHER REAL ESTATE BROKERS. WE COOPERATE WITH THEM FULLY. EQUAL HOUSING OPPORTUNITY.

WE ARE COMMERCIAL REAL ESTATE

Commercial real estate involves more than just property listings. To get the most effective results, you need to partner with a company that has a full complement of services and an in-depth team of professionals to help with all of your needs. Douglas Elliman's team of commercial real estate experts is committed to unrivaled performance standards when working with tenants, investors, purchasers and owners. We represent all major property types including office, industrial, retail, apartment and land. We treat each assignment with commitment and focus, from a single transaction in a local market to national and multi-market assignments. We help negotiate contracts, coordinate construction and provide both property management as well as ongoing advisory service to satisfy your changing real estate needs. Our breadth of market knowledge, unprecedented network and use of innovative technology extend to all types of property transactions.

For More Information:

[Rozita Soomekh-Results Powered by Rozita](#)

Licensed Associate Real Estate Broker

516.344.7185

rozita.soomekh@elliman.com

[Zdenka Sandy Peros](#)

Licensed Associate Real Estate Salesperson

Douglas Elliman Real Estate

Office: 516.681.2600

Mobile: 516.946.5530

ZdenkaSandy.Peros@elliman.com