



# GATEWAY 94

at Mt. Pleasant



## GATEWAY 94 AT MT. PLEASANT

247,105 SF Available For Lease

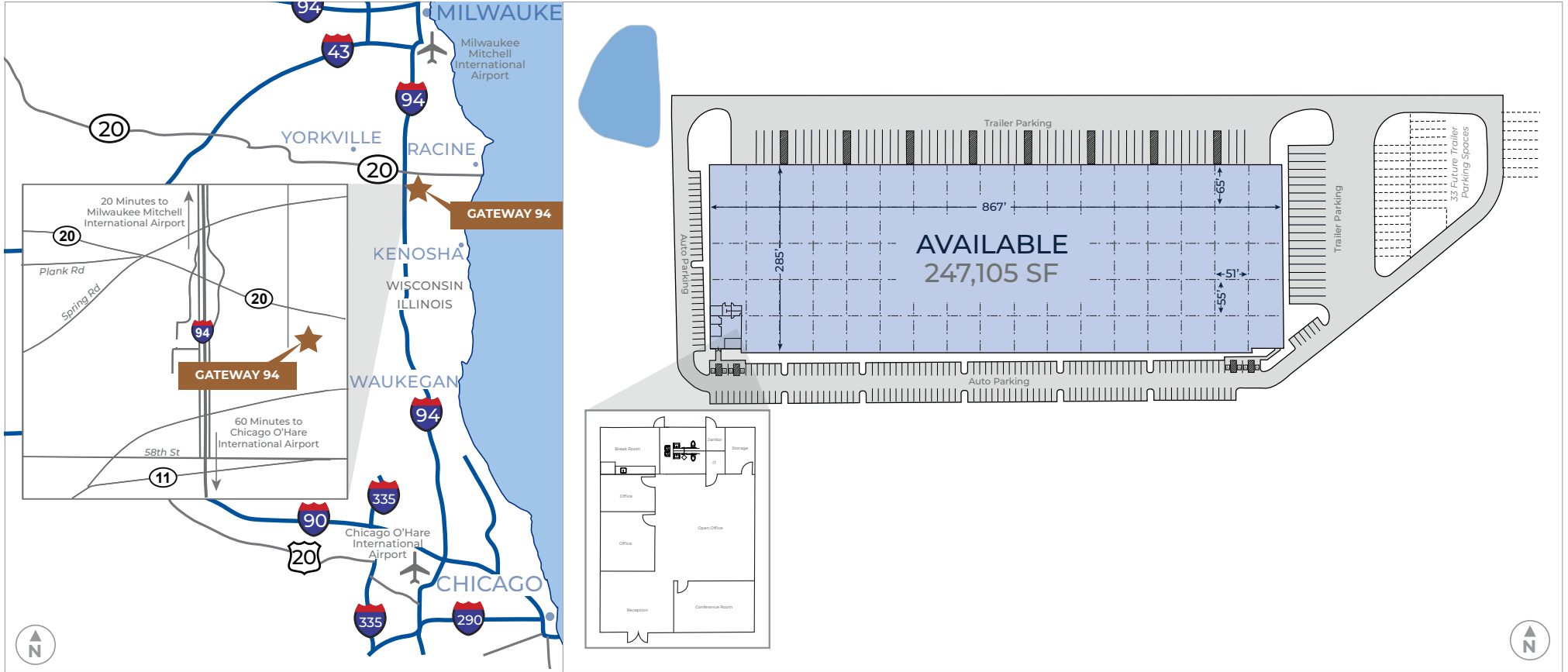
11907 MERIDIAN DRIVE | MT. PLEASANT, WI 53177

Gateway 94 at Mt. Pleasant is a warehouse facility ideal for distribution, assembly and light manufacturing situated within the Mt. Pleasant submarket of southeast Wisconsin. Well-located with excellent access to and from Interstate 94, the building totals 247,105 square feet and provides access to a large, highly skilled work force and diverse customer base.

# GATEWAY 94 AT MT. PLEASANT

11907 MERIDIAN DRIVE | MT. PLEASANT, WI 53177

## PROPERTY OVERVIEW



247,105 SF available on 19.10 acres



210' shared truck court



201 - auto parking spaces



2,500 SF office build out



LED lighting



ESFR sprinkler system



2 - drive-in doors



24 - dock doors



3,000 amps



51' x 55' bay spacing  
51' x 65' speed bay



52 - trailer parking spaces  
(33 - future trailer parking spaces)



32' clear height

### Development



### RACHEL AGBA-NOVAK

(847) 720-8982 (o) | (815) 341-8158 (c)  
rachel.agba-novak@hillwood.com

### Leasing



### KEITH PURITZ

(847) 720-1366 (o)  
keith.puritz@cushwake.com

### ERIC FISCHER

(847) 720-1369 (o)  
eric.fischer@cushwake.com

### MARK SAMUELS

(847) 720-1368 (o)  
marc.samuels@cushwake.com

# GATEWAY 94 AT MT. PLEASANT

11907 MERIDIAN DRIVE | MT. PLEASANT, WI 53177

## DRIVE TIMES



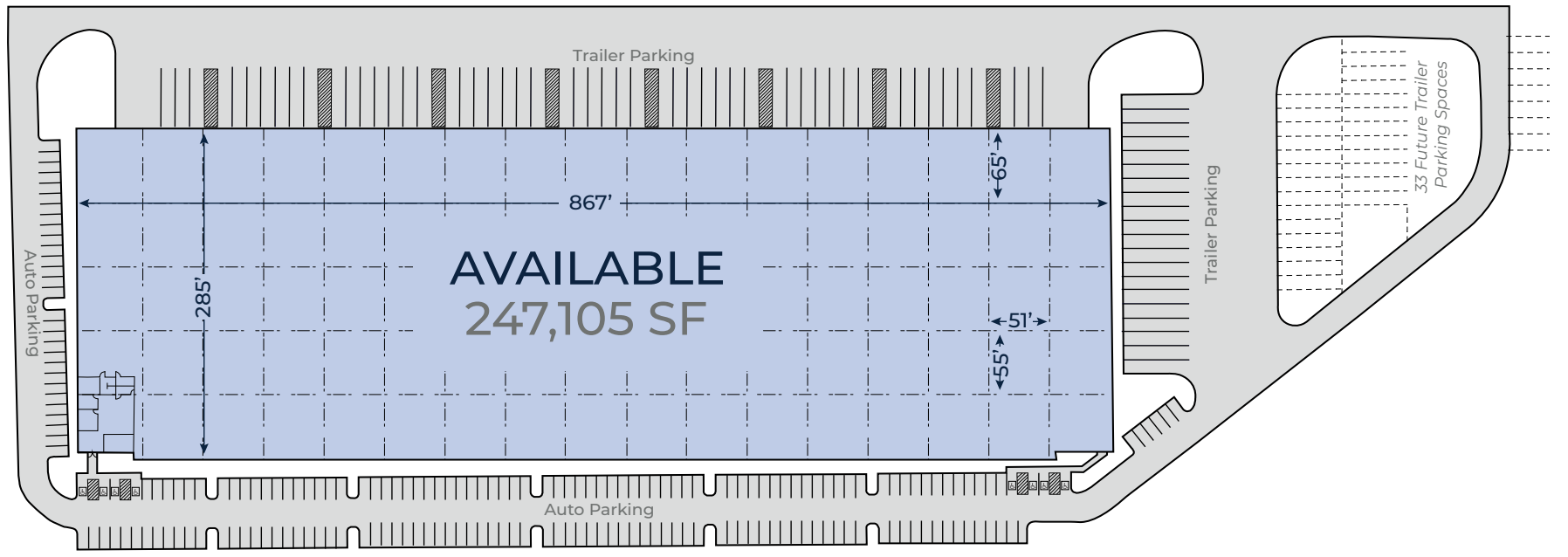


# GATEWAY 94 AT MT. PLEASANT

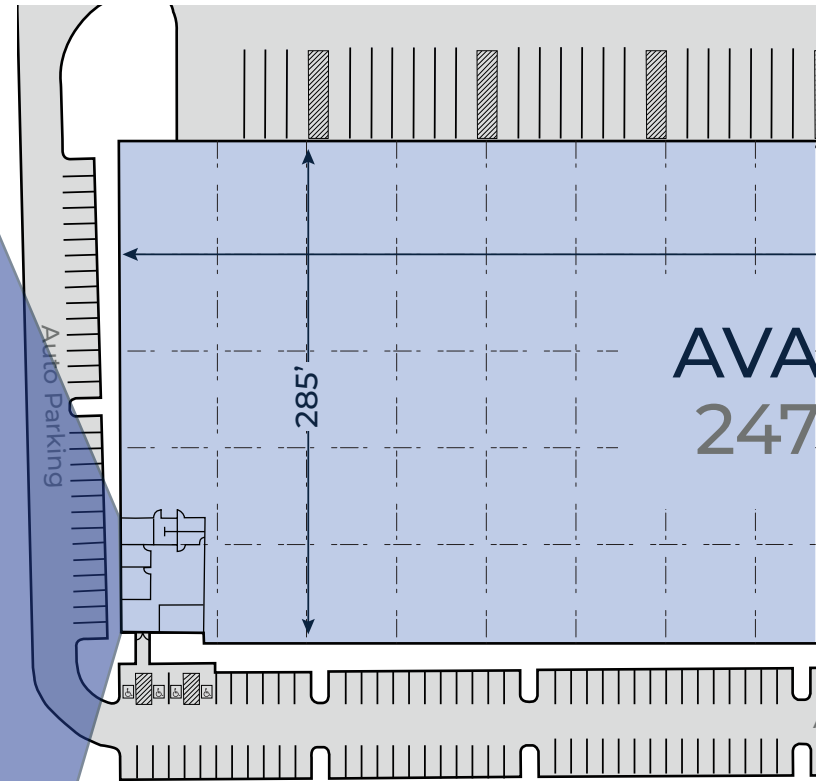
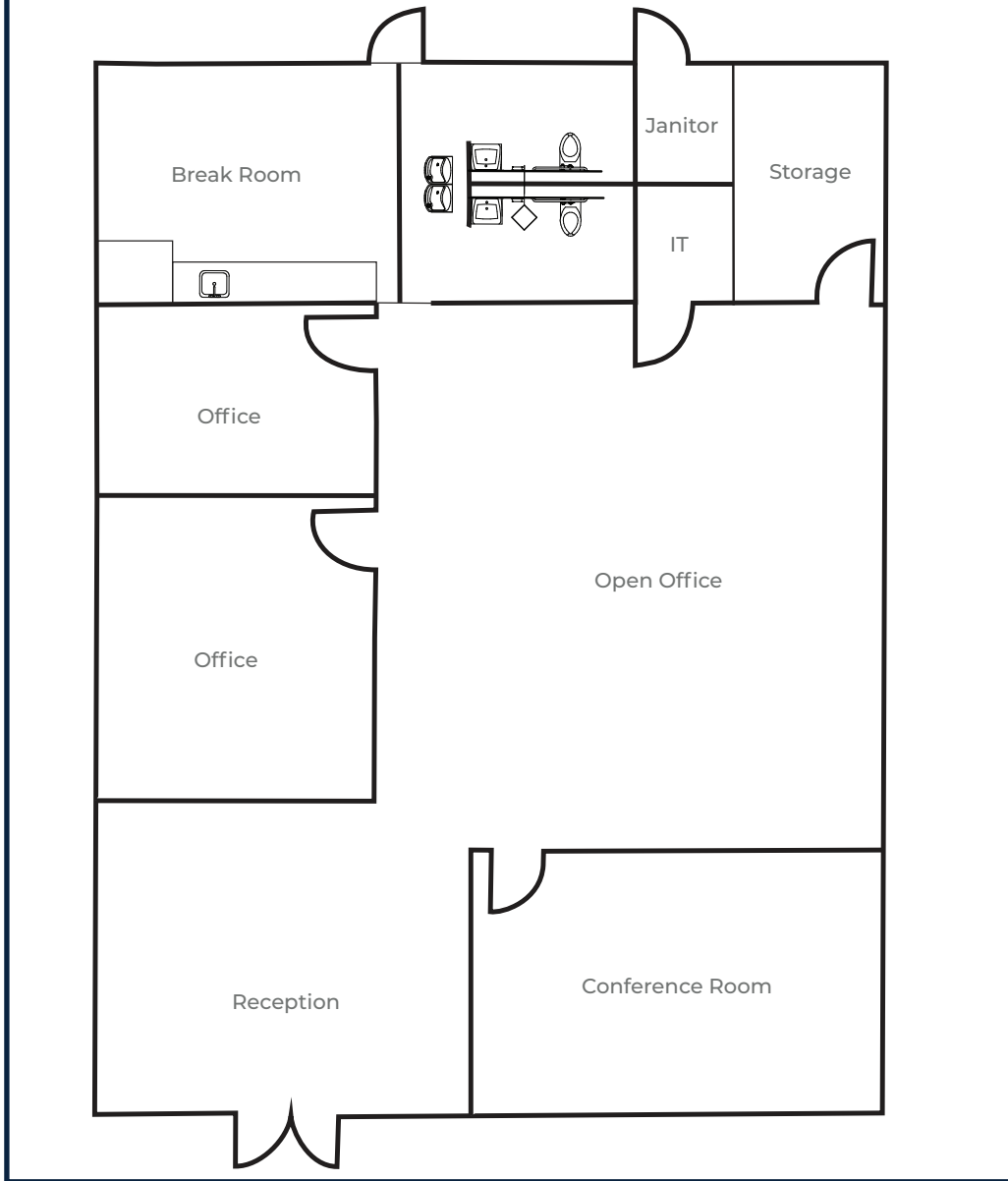
11907 MERIDIAN DRIVE | MT. PLEASANT, WI 53177

## AREA INFORMATION





# 2,500 SF OFFICE BUILD OUT



## GATEWAY 94 AT MT. PLEASANT

11907 MERIDIAN DRIVE | MT. PLEASANT, WI 53177

SPEC OFFICE SPACE



# GATEWAY 94

AT MT. PLEASANT

## CONTACT

### DEVELOPMENT



#### RACHEL AGBA-NOVAK

(847) 720-8982 (o) 9550 W. Higgins Rd | Ste 200  
(815) 341-8158 (c) Rosemont, IL 60018  
rachel.agba-novak@hillwood.com hillwood.com

### LEASING



#### KEITH PURITZ

(847) 720-1366 (o)  
keith.puritz@cushwake.com

#### ERIC FISCHER

(847) 720-1369 (o)  
eric.fischer@cushwake.com

#### MARC SAMUELS

(847) 720-1368 (o)  
marc.samuels@cushwake.com

9500 W. Bryn Mawr Ave | Ste 600  
Rosemont, IL 60018  
cushmanwakefield.com