

PRIME OFFICE FOR LEASE

SUNMARKE BUILDING

12900 STROH RANCH PLACE, PARKER, CO 80134

TREVEY
COMMERCIAL



PROPERTY FEATURES

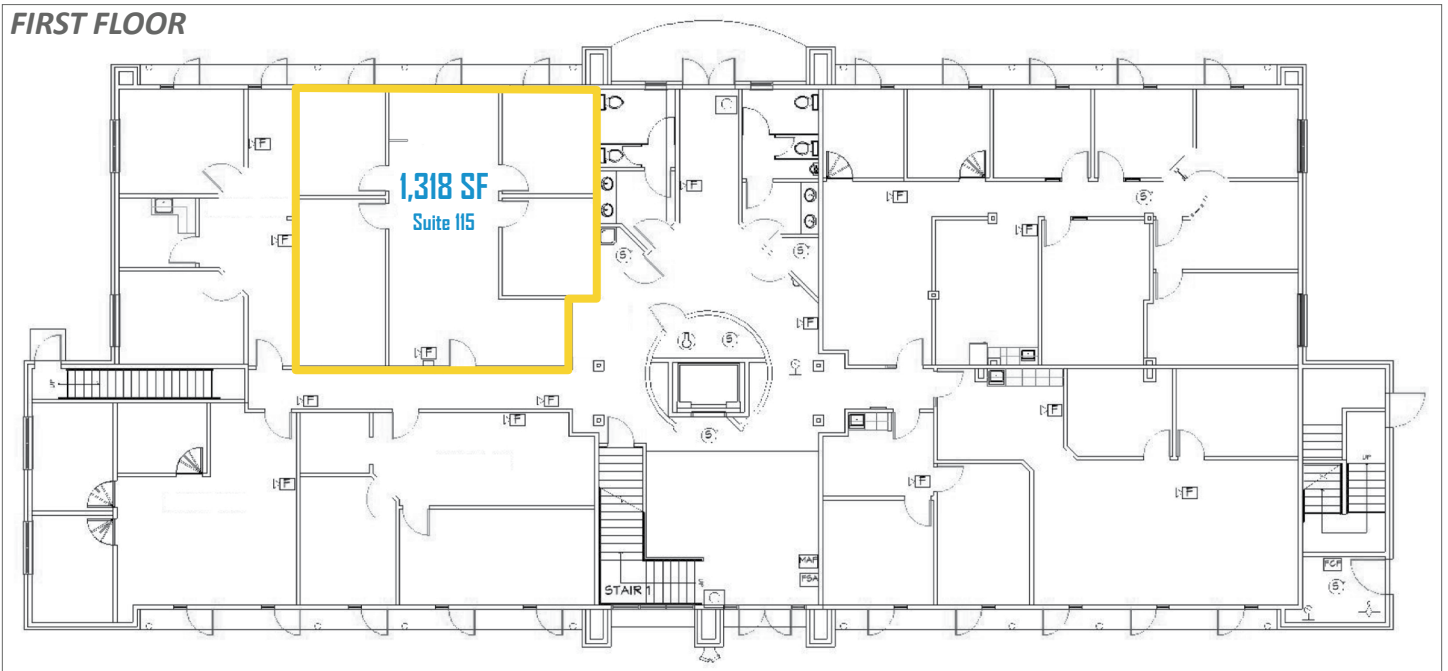
- **Suite 115 (±1,318 SF):** Featuring Four (4) Offices, Reception and Kitchenette - *Available Immediately*
- Amenities Include: Janitorial Services, High Speed Internet, 24-Hour Access / Secure Building
- On-site Property Management
- 1/2 Block Off of Parker Road on the West Side
- Adjacent to King Soopers Center, Bellco Credit Union, The UPS Store, Walgreens and Many More
- 7 Minutes to E-470, 15 Minutes to I-25, and 30 Minutes to Downtown Denver

PROPERTY DETAILS

AVAILABLE	• Suite 115: ±1,318 SF \$2,965.50 / Month
LEASE RATE	\$27.00 / SF MG (Modified Gross)
BUILDING SIZE	16,329 SF
Y.O.C.	2002
PARKING	4:1,000
CITY / COUNTY	Parker / Douglas
ZONING	Commercial

BUILDING FLOOR PLAN

FIRST FLOOR



BROKERAGE DISCLOSURE

Information contained herein has been obtained from sources believed reliable; however, no guarantee, warranty, or representation is made as to its accuracy. All information, including price and terms, is subject to change without notice. Please verify all information prior to reliance.