

# FOR SALE

RESTAURANT/BAR | \$1,299,000

2800 WOODBURN AVENUE, CINCINNATI, OH 45206



**NICK PESOLA**  
MANAGING PRINCIPAL  
513-250-5853  
NICK@PESOLAADVISORS.COM

**OLIVIA PAGE**  
SENIOR ADVISOR  
937-414-5779  
OLIVIA@3CRE.COM



**COLDWELL BANKER  
COMMERCIAL**

## ➤ THE OFFERING

Pesola Advisors Group is pleased to present the exceptional commercial space available at 2800 Woodburn Avenue, ideally situated on a high-visibility street in East Walnut Hills. Formerly operating as a bar and restaurant, this establishment is in turn-key condition and ready for immediate use. The property also features a fully-built out kitchen, restrooms and ample parking lots nearby, providing enhanced operational flexibility to accommodate a wide range of business types.

Located in the heart of East Walnut Hills, 2800 Woodburn Avenue sits within the historic DeSales Corner district, an architecturally rich and walkable area known for its vibrant mix of boutiques, restaurants, and cultural attractions. Just minutes from downtown Cincinnati, the property offers excellent visibility, access to major transit routes, and potential historic tax incentives, making it ideal for commercial or mixed-use development.

## ➤ PROPERTY HIGHLIGHTS

**Offered at: \$1,299,000**

**Total SqFt: 4,196 Sq. Ft.**

- Situated in the East Walnut Hills submarket
- Fully built-out restaurant and bar space
- Complete kitchen with 9-foot hood system
- On-site walk-in cooler
- Easy access to nearby street and paid lot parking
- Potential to lease adjacent patio space and additional storage space with large walk-in cooler





WOODBURN AVENUE

LEASABLE PATIO SPACE



→  
**HYDE PARK**

→  
**MADISON AVENUE**

**SUBJECT SITE**

**P** **PUBLIC PARKING**  
*Paid Lot*

↑  
**WOODBURN AVENUE**  
↓

←  
**WALNUT HILLS**

**TEQUILA**  
RESTAURANT/BAR

**Anjou**  
COCKTAIL BAR

**MOCHIKO**  
RESTAURANT

**6 'N THE MORNIN'**  
BREAKFAST RESTAURANT

**HEYDAY**  
RESTAURANT

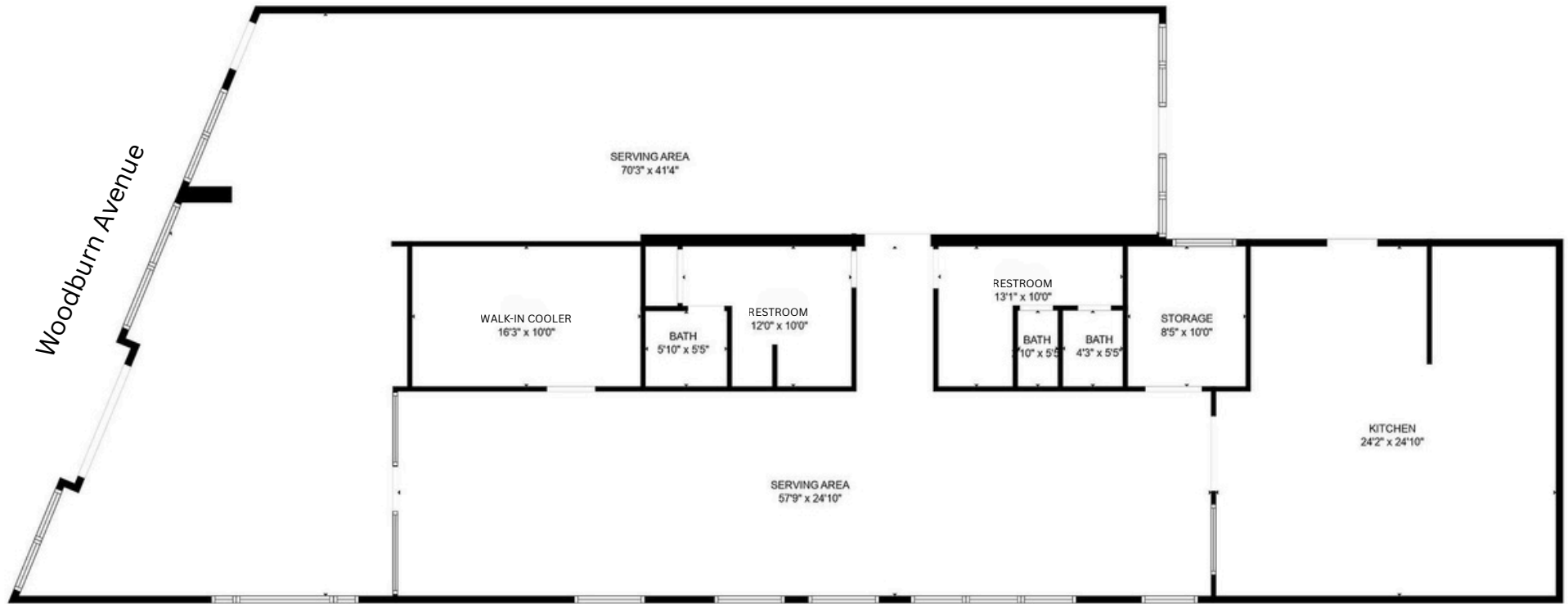
**TWENTIES**  
UPSCALE BAR

**rusk**  
UPSCALE BAR/RESTAURANT

**URBANA CAFE**  
COFFEE SHOP

# 2800 WOODBURN AVENUE

4,196 Square Feet









	1 MILE	3 MILE	5 MILE
POPULATION	16,415	164,548	314,371
AVERAGE HOUSEHOLD INCOME	\$78,597	\$90,436	\$83,231
NUMBER OF HOUSEHOLDS	8,486	74,481	143,230
MEDIAN AGE	37.5	32.8	34.5
TOTAL BUSINESSES	1,039	18,140	26,163
TOTAL EMPLOYEES	7,570	238,920	332,802

# EAST WALNUT HILLS

## SUBMARKET OF CINCINNATI

### LOCATION OVERVIEW

- Location: Just east of downtown Cincinnati; bordered by Walnut Hills, Evanston, and Hyde Park.
- Character: Historic, walkable neighborhood known for its preserved architecture, affluent residential base, and vibrant mixed-use corridors.

### COMMERCIAL DEVELOPMENTS

- *Peebles Apartments & Paramount Launch* - 94 Units
- *Kemper Lane Apartments* - 48 Units
- *Park Avenue Square* - 244 Units
- *Kingsley + Co. Affordable Housing Proposal* - 180 Units
- *Woodburn Exchange (Phase One)* - Mixed- Use Development

### LOCAL ECONOMY & BUSINESS ENVIRONMENT

- Local nodes like DeSales Corner and Woodburn Ave Historic District serve as business and social hubs with restaurants, cafés, bars, and annual street events.
- The commercial corridors of East Walnut Hills feature a vibrant and eclectic mix of small, independent businesses spanning food and drink, specialty retail, wellness, and professional services.



# Cincinnati

OHIO



## METRO AREA STATISTICS

**2.3 MM**  
POPULATION

**75K**  
HOUSEHOLD  
INCOME

**3.1%**  
UNEMPLOYMENT

## FORTUNE 500

NO. 24 - *KROGER*

NO. 51 - *PROCTER & GAMBLE*

NO. 56 - *GENERAL ELECTRIC*

NO. 314 - *WESTERN & SOUTHERN*

NO. 411 - *FIFTH THIRD*

NO. 473 - *CINTAS*

## CINCINNATI ACCOLADES

**Best City for Young Professionals**

Ranked #8 - Forbes (2023)

**Top 20 Best Places to Live in the U.S.**

Ranked #18 - U.S. News & World Report (2023)

**Best Mid-Size City for Job Growth**

Ranked #3 - National League of Cities (2023)

**Rated (A-) Overall Grade | Niche**

- Niche (2024)

**Cincinnati Children's ranked #1**

**Children's Hospital**

- US News & World Report



**NICK PESOLA**  
**MANAGING PRINCIPAL**

(513) 250-5853

[NICK@PESOLAADVISORS.COM](mailto:NICK@PESOLAADVISORS.COM)



**OLIVIA PAGE**  
**SENIOR COMMERCIAL ADVISOR**

(937) 414-5779

[OLIVIA@3CRE.COM](mailto:OLIVIA@3CRE.COM)

Pesola Advisors is a commercial real estate team with Coldwell Banker Commercial, specializing in strategic advisory, leasing, and investment sales. The group focuses on delivering tailored solutions to landlords, tenants, and investors by combining market expertise with a hands-on, deal-driven approach. Pesola Advisors is committed to maximizing value for clients through thoughtful execution, strong relationships, and a deep understanding of local market dynamics.



**PESOLA**  
ADVISORS GROUP



**COLDWELL BANKER**  
**COMMERCIAL**

