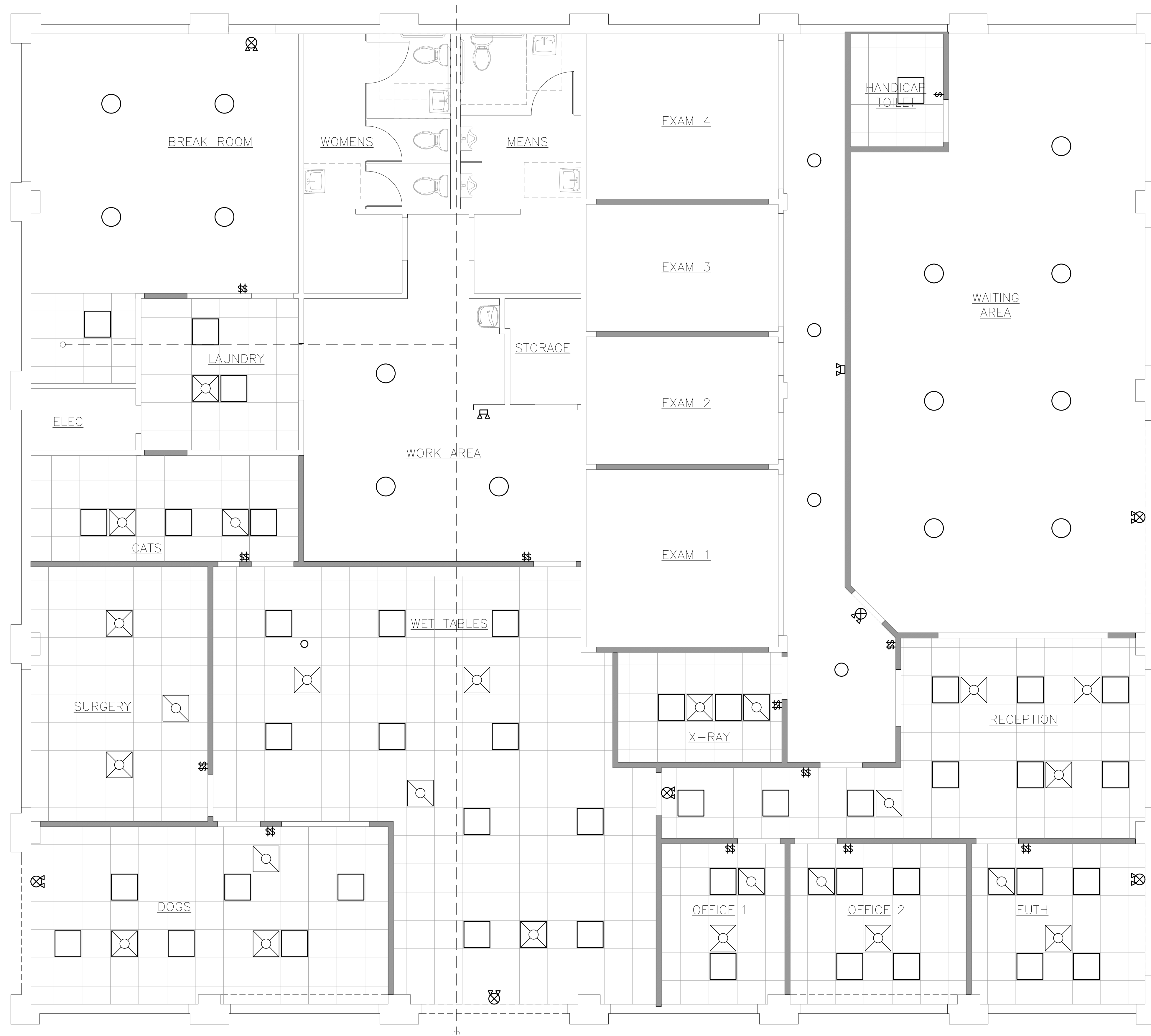


REVISIONS
1.
2.
3.
4.

TLC PetSnip, Inc.
425 S LAKE PARKER AVE
LAKELAND, FL 33801 POLK COUNTY
PROPOSED FLOOR PLAN

A PROPOSED FLOOR PLAN
SCALE: 1/4" = 1' - 0"



REVISIONS
1.
2.
3.
4.

TLC PetSnip, Inc.
425 S LAKE PARKER AVE
LAKELAND, FL 33801 POLK COUNTY
REFLECTED CEILING PLAN

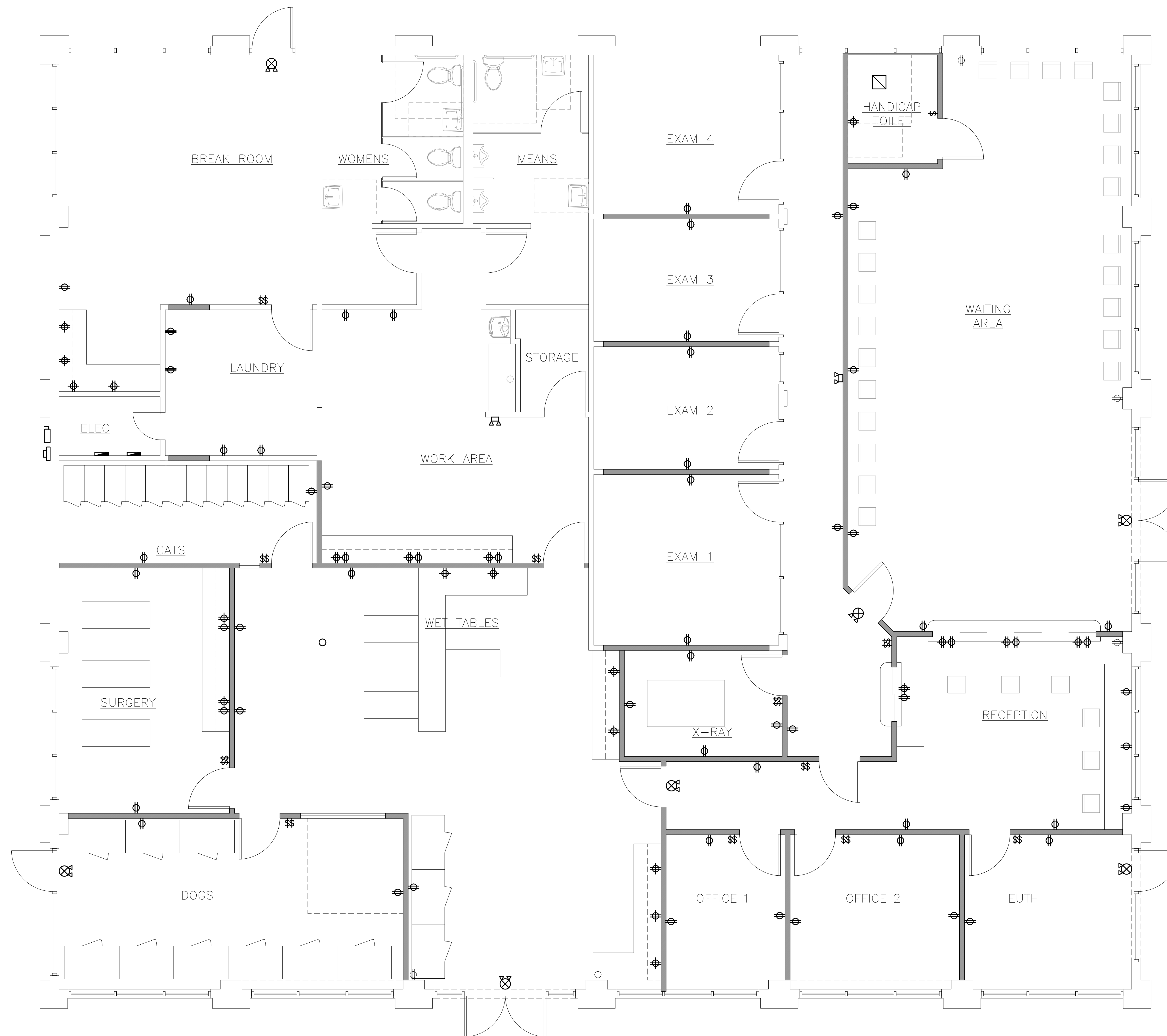
A REFLECTED CEILING PLAN
SCALE: 1/4" = 1' - 0"



TYPICAL MOUNTING HEIGHTS	
ITEM	MOUNTING HEIGHT
SWITCHES	46" A.F.F. TO CENTER
RECEPTACLES	16" A.F.F. TO CENTER
BATHROOM G.F.I. RECEPTACLES	48" A.F.F. TO CENTER
EXTERIOR W.P. G.F.I. RECEPTACLES	30" A.F.F. TO CENTER
EMERGENCY LIGHTS	84" A.F.F. TO TOP
EXIT LIGHTS - WALL MOUNTED	84" TO CENTER OR OVER DOOR
ELECTRICAL PANELS	72" A.F.F. TO TOP

NOTES:

- UNLESS NOTED ELSEWHERE ON THE CONTRACT DOCUMENTS, THIS LIST REPRESENTS THE TYPICAL MOUNTING HEIGHTS REQUIRED FOR THE DEVICES SHOWN.
- THE HEIGHTS INDICATED SHALL BE NOMINAL TO THE CENTER OF THE BOX, REQUIRING ONLY ONE BLOCK CUT FOR FLUSH MOUNTED DEVICES. MAINTAIN HEIGHT CONSISTENCY BETWEEN SURFACE AND FLUSH MOUNTED DEVICES.
- CONTRACTOR TO VERIFY FINAL LOCATIONS AND MOUNTING DEPTH OF ALL BOXES WITH OWNER, FURNITURE SUPPLIER, GENERAL CONTRACTOR AND ARCHITECT BEFORE ROUGH IN.



ELECTRICAL LEGEND

- | | | | |
|---|---|---|---|
| ⊕ | DUPLEX RECEPTACLE
COMMERCIAL GRADE 20A | ⤵ | HOME RUN TO PANEL
2 #12 W/ GND. U.N.O. OR
AS REQUIRED BY LOAD |
| ⊕ | GFI DUPLEX RECEPTACLE,
COMMERCIAL GRADE 20A | ⤵ | BRANCH CIRCUIT WIRING
2 #12 IN 1/2" C. OR
AS REQUIRED BY LOAD |
| ⊕ | GFI OR WATERPROOF AS
REQUIRED | ⬜ | ELECTRICAL PANEL |
| ⊕ | COUNTER HEIGHT DUPLEX
RECEPTACLE 44" AFF
GFI OR WP AS NOTED | ⬜ | DISCONNECT SWITCH
SIZE PER EQUIPMENT
REQUIREMENT |
| ⊕ | QUAD DUPLEX RECEPTACLE
COMMERCIAL GRADE | | |

ELECTRICAL PLAN KEY NOTES

- CEILING MOUNTED RECEPTACLE AND DATA FOR CEILING MOUNTED PROJECTOR. COORDINATE LOCATION WITH OWNER.
- PROVIDE JUNCTION BOX AND ROUGH-IN FOR SECURITY CAMERA BY OWNER. COORDINATE LOCATION WITH OWNER.
- COORDINATE DISCONNECT AND FUSE/BREAKER REQUIREMENTS FOR MECHANICAL UNITS WITH MECHANICAL CONTRACTOR AND MANUFACTURER'S.
- EMPTY CONDUIT TO DATA DEMARCATION LOCATION. COORDINATE WITH OWNER.

A ELECTRICAL PLAN
SCALE: 1/4" = 1' - 0"



REVISIONS

1.	
2.	
3.	
4.	

TLC PetSnip, Inc.
425 S LAKE PARKER AVE
LAKELAND, FL 33801 POLK COUNTY
ELECTRICAL PLAN

SHEET:

E11

DATE: 10/7/2025