

FOR SALE

1.02 Acres on Veterans Memorial Pkwy
Lake St. Louis, MO 63367

(I 70)

Veteran's Memorial Parkway



PROPERTY SUMMARY

LAND

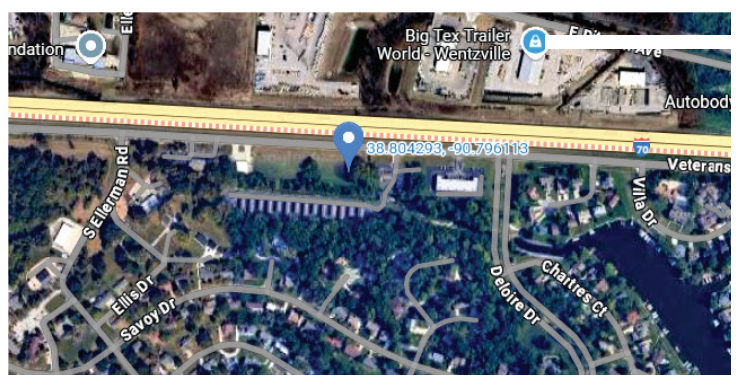
- Land Available for Office, Retail, Senior Housing, Restaurants, Gas Stations, and Medical use.
- 1.02 Acres.
- Zoned for PUD
- Utilities available
- Highway Visibility
- **SALE PRICE: \$8.75 psf**

Directions


I-70 West, exit 214 for Lake Saint Louis Blvd. Use the left two lanes to make a Left onto Lake St. Louis Blvd. At the Round-A-Bout take the 1st exit onto Veterans Memorial Pkwy. Then destination will be on the left.



Veteran's Memorial Parkway



 Listing Agent **Trevor Shockley**

 Cell **314-280-5037**

 **trevor@shockleycommercial.com**



501 First Capital Dr. Suite 5,
St. Charles MO 63301

 Office **636-946-9753**

 **www.shockleycommercial.com**