

AIRPARK EAST BUSINESS PARK

GREENSBORO

408, 410 & 412 Gallimore Dairy Rd
Greensboro, NC 27410



FOR LEASE

±10,500 - 25,200 SF



LEASED BY





408 GALLIMORE DAIRY ROAD - SUITE C

Available SF: 25,200 SF

Office SF: 3,742 SF

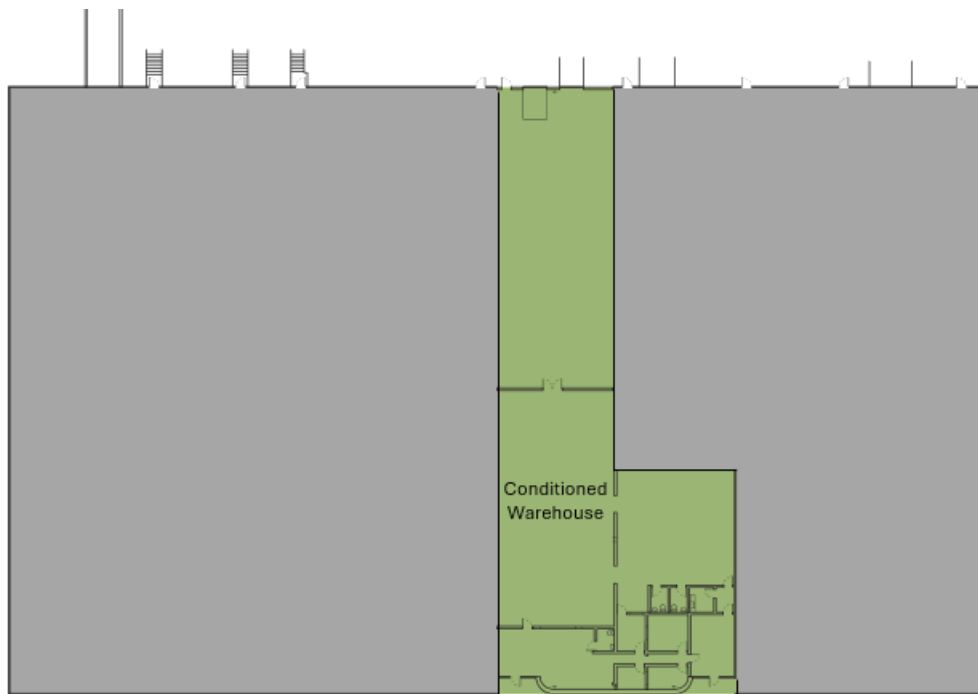
Clear Height: 21'

Column Spacing: 40' x 50'

Lighting: LED

Sprinkler: Wet System

Dock Doors: Six (6) 8' x 10'
Two (2) W/ Pit Leveler,
Three (3) W/Edge of Dock
One (1) Knock-Out Panel



410 GALLIMORE DAIRY ROAD - SUITE D

Available SF: 10,500 SF

Office SF: 1,575 SF

Clear Height: 21'

Column Spacing: 40' x 50'

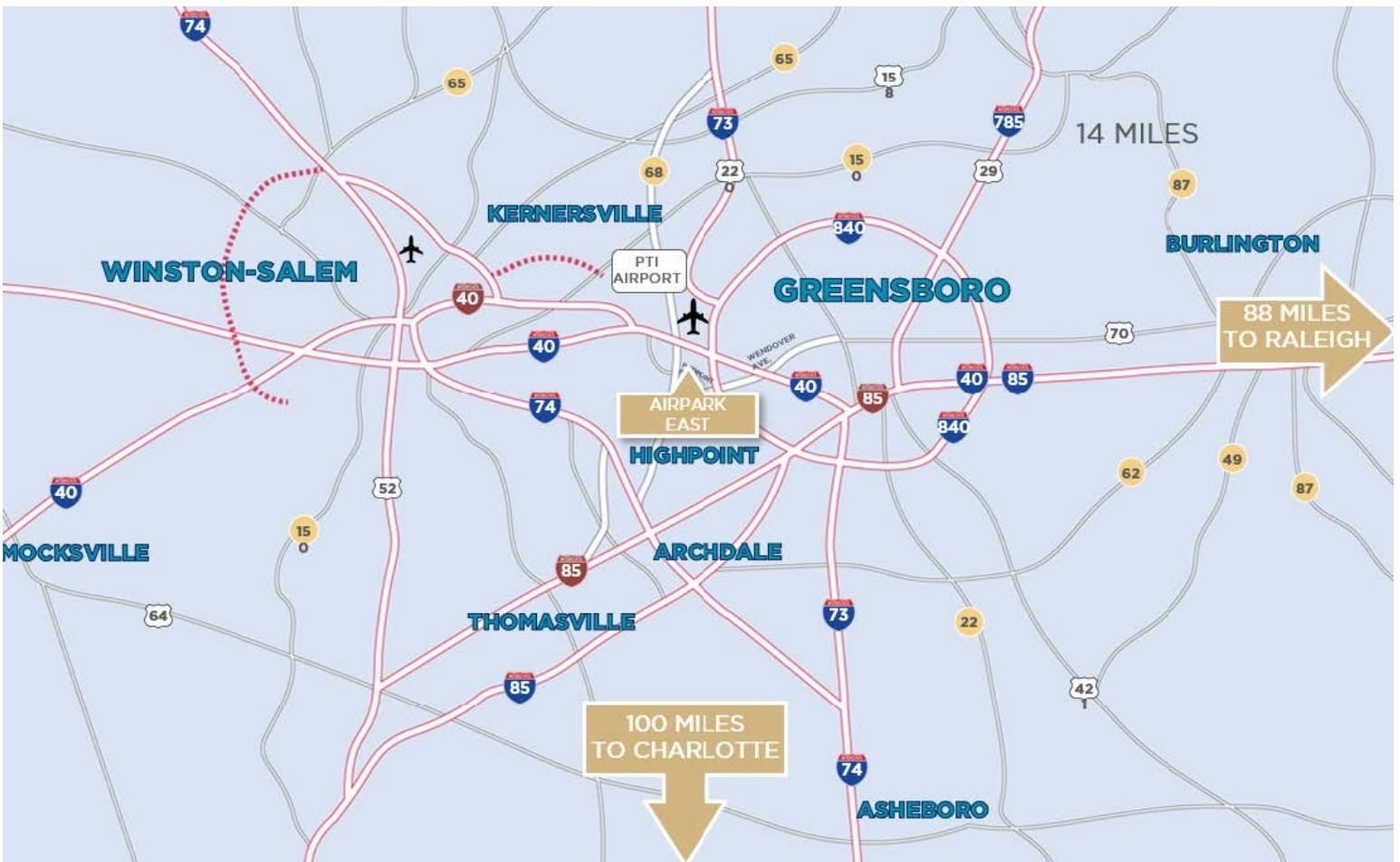
Lighting: LED

Sprinkler: Wet System

Dock Doors: One (1) 8' x 10' W/Pit Leveler

Drive-Up Ramp: One (1) 10' x 10'





CONTACT INFORMATION

408, 410 & 412 Gallimore Dairy Rd
Greensboro, NC 27410

Ryan Conboy, SIOR

ryan.conboy@cushwake.com
(336) 821-3832

Bobby Finch

bobby.finch@cushwake.com
(336) 812-3303

This document is for informational purposes only and does not constitute an offer or acceptance of a lease. Any lease agreement must be in writing and signed by the landlord. No representations or warranties are made except as expressly stated in a signed lease. Information is provided "as is" and may be subject to errors or change without notice.



LEASED BY

