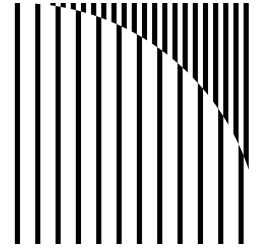


For Sale

24285 Smithtown Road, Shorewood



Prime Commercial Opportunity

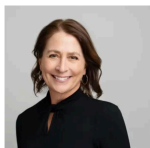
Elevate your business in one of the Twin Cities' most sought-after submarkets. This strategically located property offers the perfect blend of high-traffic exposure and neighborhood prestige.



Location	24285 Smithtown Road, Shorewood, MN 55331
Size	.40 Acres
2026 Taxes	\$13,480
Year Built	1959
PID Number	3311723140005
Possession	Immediately
Price	\$595,000

Property Details

- Unbeatable high-visibility location
- Over 14,000 vehicles per day
- Built-out community
- Thriving mix of long-standing local businesses
- Located in the heart of a dense residential area
- Rare opportunity in a low-supply commercial market – this is a unique chance to secure a footprint where competitors cannot
- Versatile 0.40-acre site
- A flexible canvas ready for your vision



Laura Hotvet
Compass Commercial
M: 612.816.7537
laura.hotvet@compass.com

COMPASS
COMMERCIAL