

North Scottsdale / Carefree Submarket

OFFICE SUITES FOR LEASE 270 - 1,080± RSF

8700 E PINNACLE PEAK ROAD | SUITES 209 & 212 | SCOTTSDALE, ARIZONA 85255

**PLENTY OF WINDOWS
FOR NATURAL LIGHTING!**

FEATURES

- Open flex space with restroom
- Built-in coffee nook with counter, sink, and closeable doors
- Closet equipped with lower cabinets, countertop, shelving
- Private outdoor patio
- Common conference room and kitchenette
- Zoned C-1, City of Scottsdale

FOR ADDITIONAL INFORMATION AND TO SCHEDULE A TOUR CONTACT:



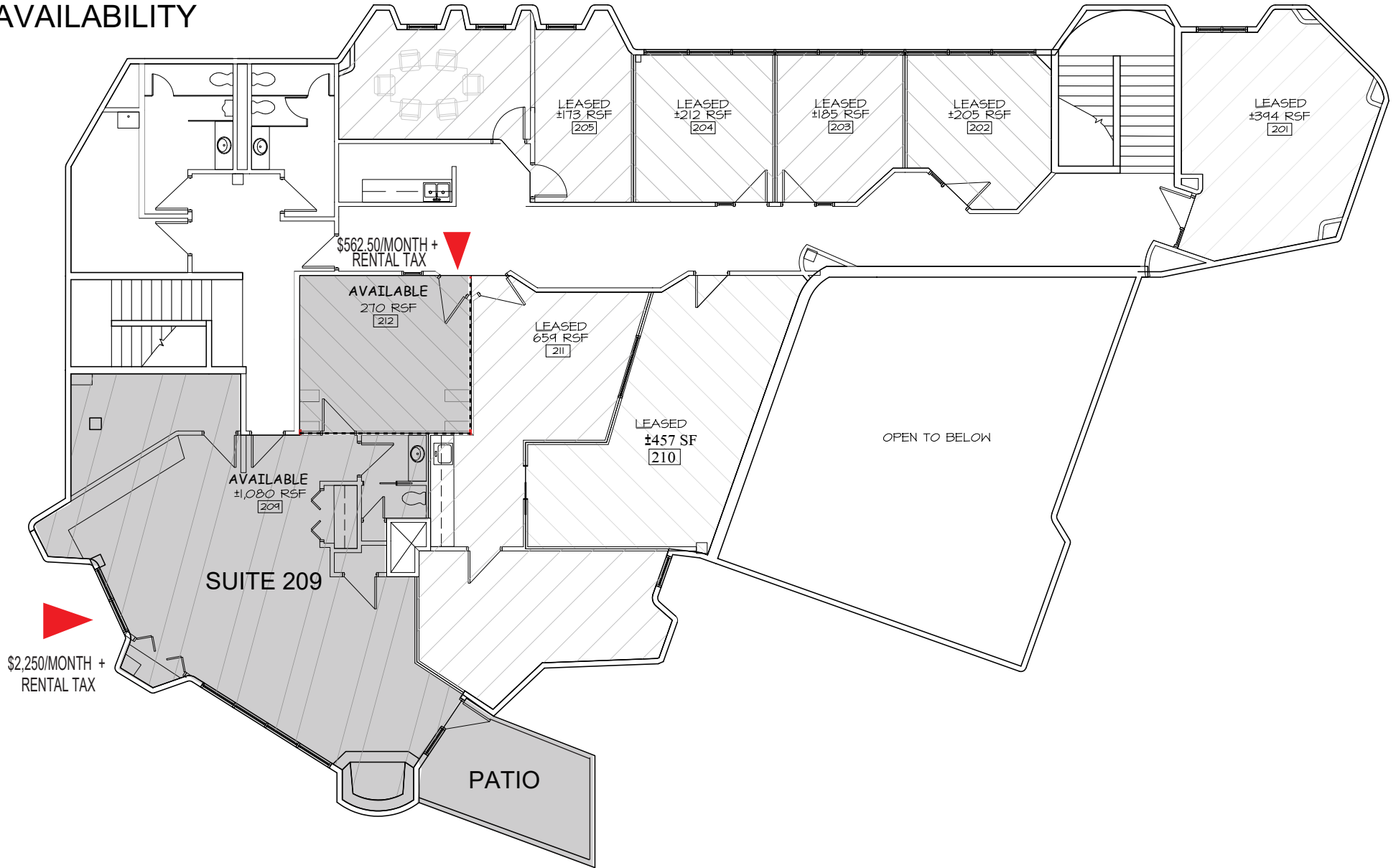
John Quatrini
Associate Broker
john@shellcommercial.com
O (480) 443-3992
C (602) 859-0506



Suzanne Enright
Senior Associate
suzanne@shellcommercial.com
O (480) 443-3992
C (602) 471-2981

 **SHELL**
Commercial Investment Real Estate
O 480 443 3992 16410 N 91st Street
Suite 112 Scottsdale, AZ 85260

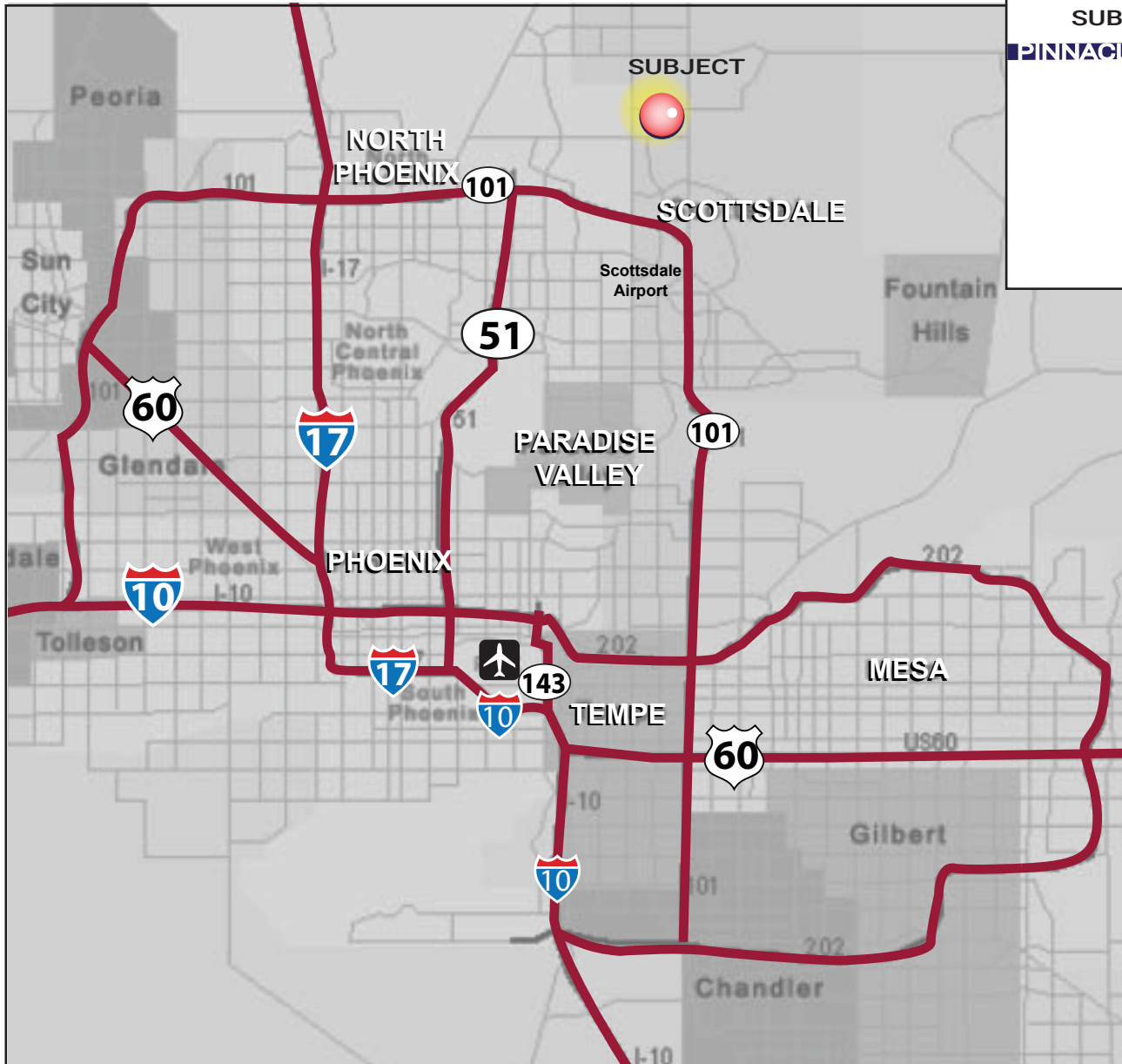
SECOND FLOOR
AVAILABILITY



NOT TO SCALE

All information furnished regarding property for sale, rental or financing is from sources deemed reliable, but no warranty or representation is made to the accuracy thereof and same is submitted to errors, omissions, change of price, rental or other conditions, prior to sale, lease or financing or withdrawal without notice. No liability of any kind is to be imposed on the broker herein. This information has been secured from sources deemed reliable, however, we make no warranties as to its accuracy.





SUBJECT 	LA MIRADA SHOPPING CENTER
PINNACLE PEAK RD 	
N PINNACLE RD 	DESERT VILLAGE SHOPPING CENTER

