

MAKE READY COMPLETE



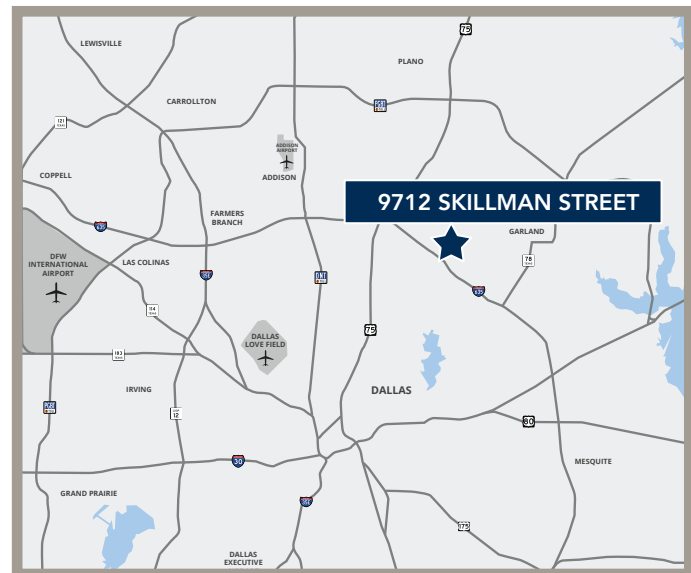
6,404 SF
AVAILABLE FOR LEASE

9712 SKILLMAN STREET

DALLAS, TEXAS 75243

PROPERTY HIGHLIGHTS

- Total Building SF: 61,629 SF
- Vacancy SF: 6,404 SF
- Clear Height: 16'
- Parking Ratio: 1.22/1,000 SF
- Year of Construction: 1980
- Easy access to I-635



CONTACTS

Weston Porter | 214.442.8933 | wporter@holtlunsford.com
Danny Phillips | 972.585.5102 | dphillips@holtlunsford.com

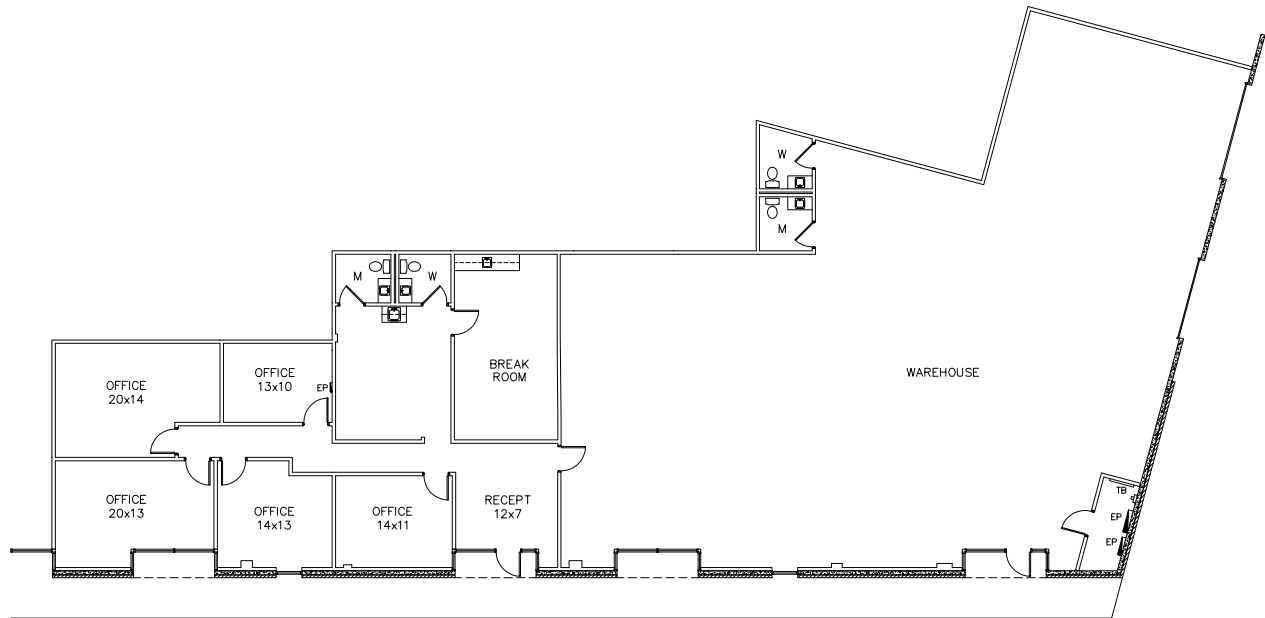


This information is deemed reliable, however Holt Lunsford Commercial makes no guarantees, warranties or representation as to the completeness or accuracy thereof.

9712 SKILLMAN STREET

DALLAS, TEXAS 75243

FLOOR PLAN



SUITE 9712 SPECS

- Vacancy SF: 6,404 SF
- Office SF: 2,202 SF
- Warehouse SF: 4,202 SF
- Two (2) Grade Level Doors
- Clear Height: 16'

CONTACTS

Weston Porter | 214.442.8933 | wporter@holtlunsford.com
Danny Phillips | 972.585.5102 | dphillips@holtlunsford.com





CONTACTS

Weston Porter | 214.442.8933 | wporter@holtlunsford.com
Danny Phillips | 972.585.5102 | dphillips@holtlunsford.com



This information is deemed reliable, however Holt Lunsford Commercial makes no guarantees, warranties or representation as to the completeness or accuracy thereof.

