

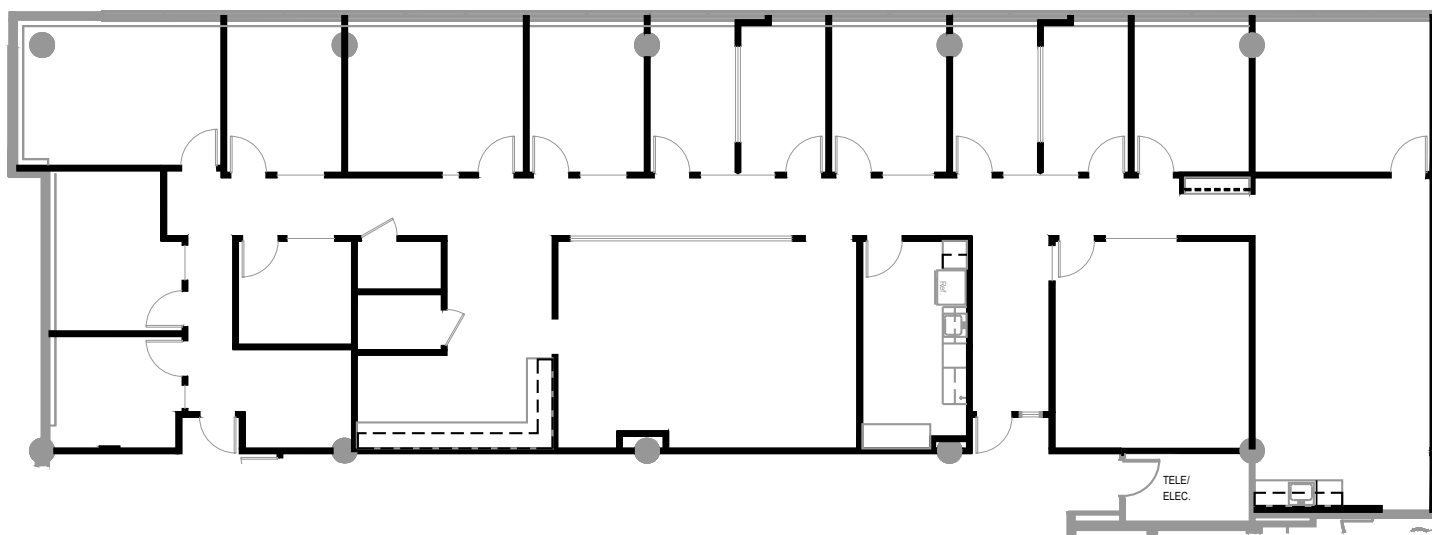
OFFICE SPACE FOR LEASE

455 SHERMAN STREET

DENVER, COLORADO 80203

SUITE 210
±4,843 RSF

AVAILABLE
Q4 2026



SUITE	SIZE	LAYOUT	AVAILABILITY
210	±4,834 RSF	14 offices (11 on glass), 2 conference rooms, reception area, kitchen & break area, open workstation area, copy center area, storage rooms. access to restrooms, elevators and stairs	Available Q4 2026

JR BITZER

303 501 8778

jrbitzer@lee-associates.com