

FOR LEASE - NORTHBROOK PROFESSIONAL CENTER



1929 N WASHINGTON ST, SUITE UU, BISMARCK

PROPERTY DESCRIPTION

Discover an outstanding leasing opportunity located within the highly visible Northbrook Professional Center, which sees 14,435 vehicles per day along N Washington Street! With access to common restrooms and ample parking in a spacious lot, as well as signage opportunities and impressive accessibility from I-94, tenants can enjoy the convenience of this prime space that is poised to accommodate diverse business needs.

PROPERTY HIGHLIGHTS

- High Traffic Location in the Northbrook Professional Center on North Washington Street
- One Room Office Suite
- Windows into Main Walkway
- Just Off Busy South Entrance Corridor
- Neutral Commercial Grade Carpet
- Common Restrooms
- Generous Parking in Large Lot
- 14,435 Vehicles Per Day on Washington St

OFFERING SUMMARY

Lease Rate:	\$25.00 PSF
Lease Space:	310 USF 384 RSF
Availability:	September 2026
Parking:	Large Lot
Traffic Count:	14,435 Vehicles Per Day

NEARBY BUSINESSES

Anne Carlsen Center	Rustic Petals Florist
Advanced Bodywork & Massage	Smart Weight Nutrition & Fitness Studio
Arco Gas Station	Thrifty White Pharmacy
China Garden	Transitions Yoga
Papa Johns Pizza	Wide Eyed Coffee



George Yineman
Associate Broker/Commercial REALTOR®
George@risepropertybrokers.com
c: 701.319.3000

All information herein has been obtained from sources deemed reliable. No warranty or guarantee is made as to the accuracy of the information.

RISE PROPERTY BROKERS

1010 E Central Ave
Bismarck, ND 58501

o: 701.222.0232

risepropertybrokers.com

SUITE UU PHOTOS



George Yineman
Associate Broker/Commercial REALTOR®
George@risepropertybrokers.com
c: 701.319.3000

*All information herein has been obtained from sources deemed reliable.
No warranty or guarantee is made as to the accuracy of the information.*

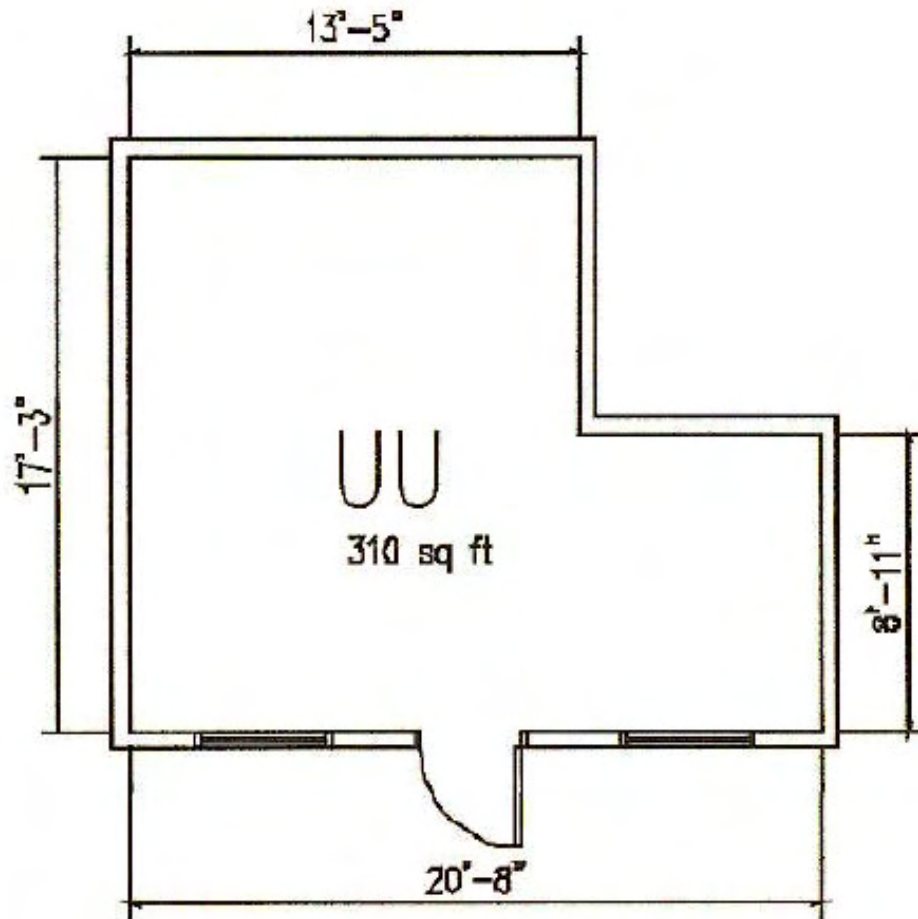
RISE PROPERTY BROKERS

1010 E Central Ave
Bismarck, ND 58501

o: 701.222.0232

risepropertybrokers.com

SUITE UU FLOOR PLAN



George Yineman
Associate Broker/Commercial REALTOR®
George@risepropertybrokers.com
c: 701.319.3000

*All information herein has been obtained from sources deemed reliable.
No warranty or guarantee is made as to the accuracy of the information.*

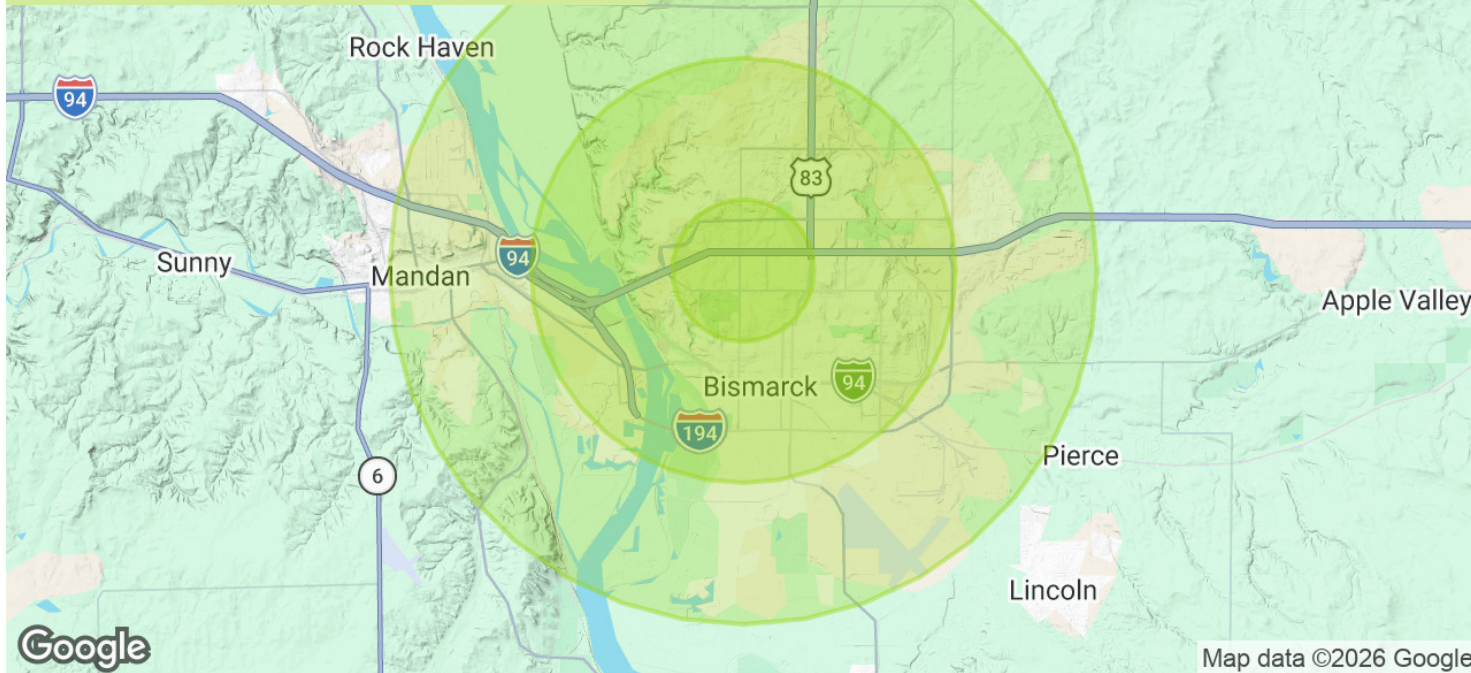
RISE PROPERTY BROKERS

1010 E Central Ave
Bismarck, ND 58501

o: 701.222.0232

risepropertybrokers.com

DEMOGRAPHIC SUMMARY



POPULATION

	1 MILE	3 MILES	5 MILES
Total Population	12,299	68,161	98,183
Average Age	41	41	40

HOUSEHOLDS & INCOME

	1 MILE	3 MILES	5 MILES
Total Households	5,801	29,836	41,784
# of Persons per HH	2.1	2.3	2.3
Average HH Income	\$86,540	\$93,639	\$95,899
Average House Value	\$272,651	\$311,850	\$312,276

TRAFFIC COUNTS

N Washington Street	14,435/day
---------------------	------------

2020 American Community Survey (ACS)



George Yineman
 Associate Broker/Commercial REALTOR®
 George@risepropertybrokers.com
 c: 701.319.3000

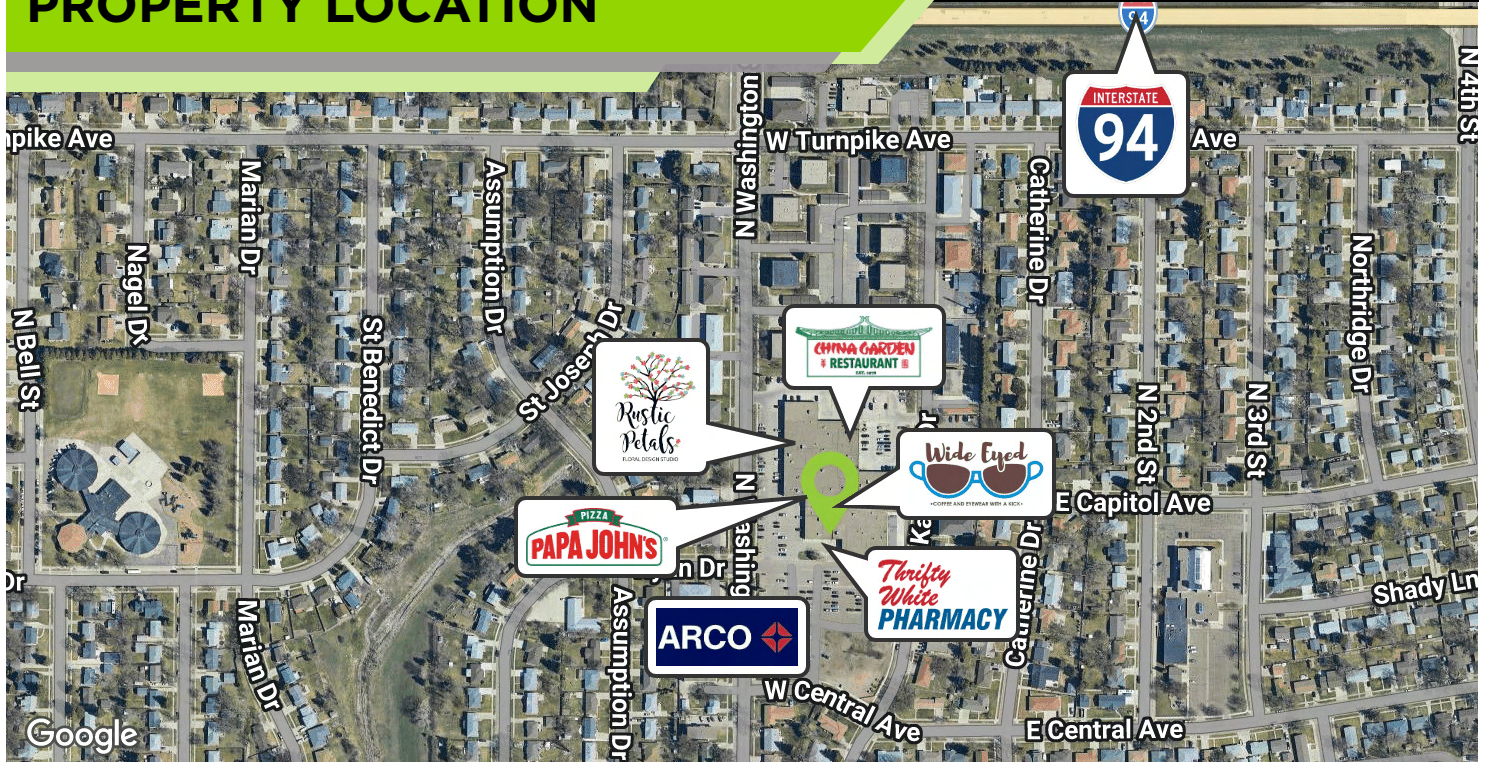
RISE PROPERTY BROKERS

1010 E Central Ave
 Bismarck, ND 58501
 o: 701.222.0232

risepropertybrokers.com

All information herein has been obtained from sources deemed reliable.
 No warranty or guarantee is made as to the accuracy of the information.

PROPERTY LOCATION



LOCATION OVERVIEW

Great North Bismarck Location!

On High Traffic North Washington Street

Easy Access from I-94

Large Parking Lot with Front Door Parking



George Yineman
Associate Broker/Commercial REALTOR®

George@risepropertybrokers.com
c: 701.319.3000

*All information herein has been obtained from sources deemed reliable.
No warranty or guarantee is made as to the accuracy of the information.*

RISE PROPERTY BROKERS

1010 E Central Ave
Bismarck, ND 58501

o: 701.222.0232

risepropertybrokers.com



COMMERCIAL REAL ESTATE AT AN ELEVATED LEVEL



George Yineman

Associate Broker / Commercial REALTOR®

701.319.3000

THE RISE TEAM



Adam Geiger

Broker / President

701.425.9427



George Yineman

**Associate Broker /
Commercial REALTOR®**

701.319.3000



Jon Lee

**Broker Associate /
Commercial REALTOR®**

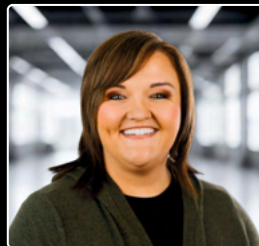
701.400.4445



Regina Yineman

VP of Operations / REALTOR®

701.471.3140



Maleah Nelsen

**Licensed Agent /
Marketing Specialist**

701.301.0259



Fred Koenig

Commercial REALTOR®

701.226.7206



Tyrus Jangula

**Sales Assistant /
Commercial Agent**

701.390.2909