

FOR LEASE

RETAIL/OFFICE

**7131 NE Glisan St.
Portland, OR 97213**

- Micro-tenanting options for smaller retail spaces
- Local owners committed to community integration
- Historic character repurposed for modern creative use
- Flexible configurations and demisement

Terrific opportunity to be one of the first tenants in this exciting, high visibility Montavilla neighborhood project.

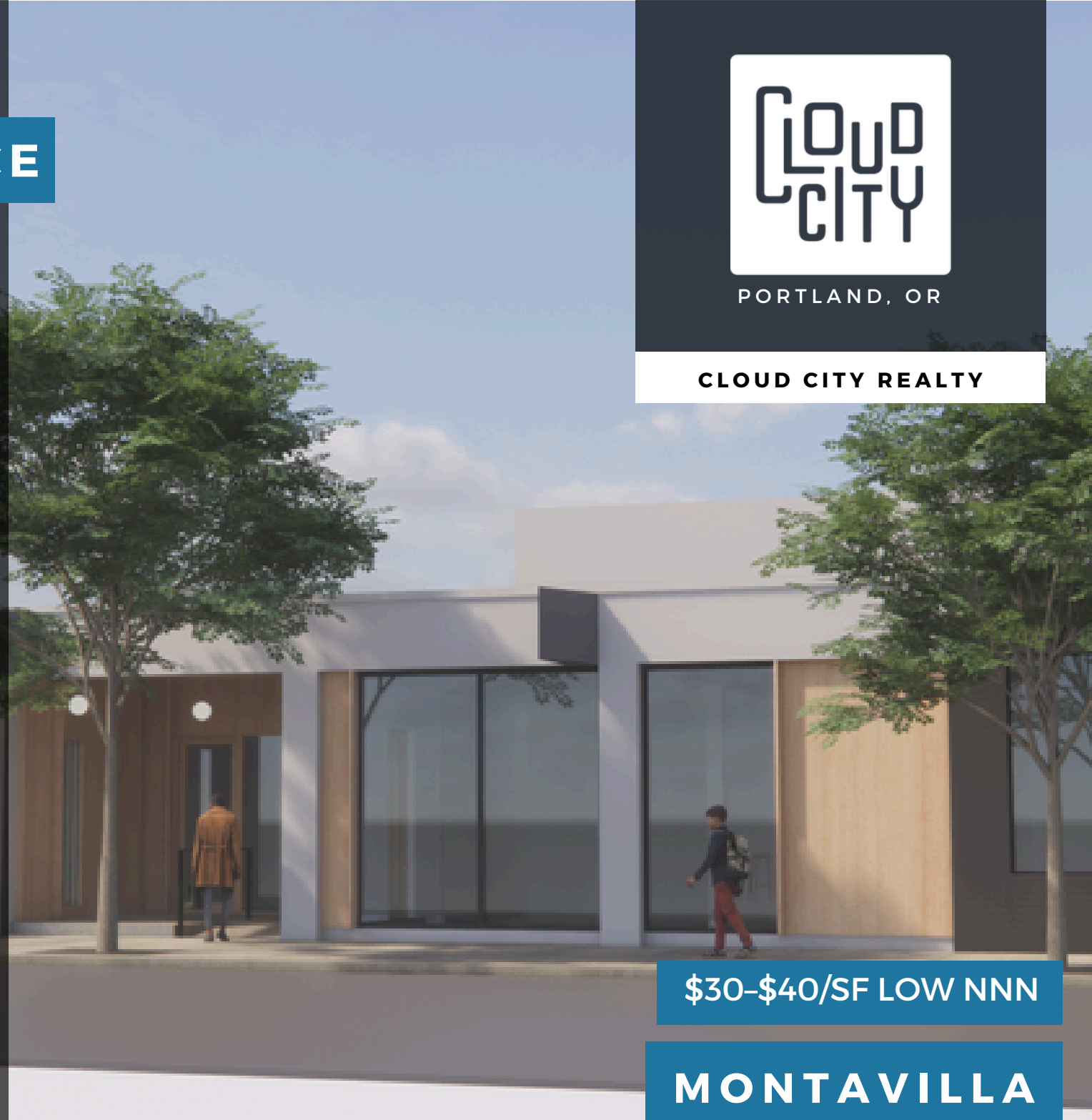


JJ HEWITT
Commercial Broker
503-502-0379
jj@cloudcityrealty.com



PORTLAND, OR

CLOUD CITY REALTY



\$30-\$40/SF LOW NNN

MONTAVILLA

BUILDING HIGHLIGHTS



Spaces Available

- Retail
- Flex / Maker Space
- Office / Personal services
- Cafe / Restaurant

Configurations

- Street front and interior
- Entrances on NE Glisan St or NE 72nd Ave
- Outside patio / dining / shared space possibilities
- Units accessible from shared central hallway
- Rear entrance access
- Corner location offering varied frontage options



Cloud City Realty
6838 NE Sandy Blvd
Portland, OR 97213
www.cloudcityrealty.com
971-339-1456



**BUILDING
HIGHLIGHTS**



NE 72nd Ave



Cloud City Realty
6838 NE Sandy Blvd
Portland, OR 97213
www.cloudcityrealty.com
971-339-1456



BUILDING HIGHLIGHTS

72nd Ave

NE Glisan St



Cloud City Realty
6838 NE Sandy Blvd
Portland, OR 97213
www.cloudcityrealty.com
971-339-1456





Neighborhood Highlights

