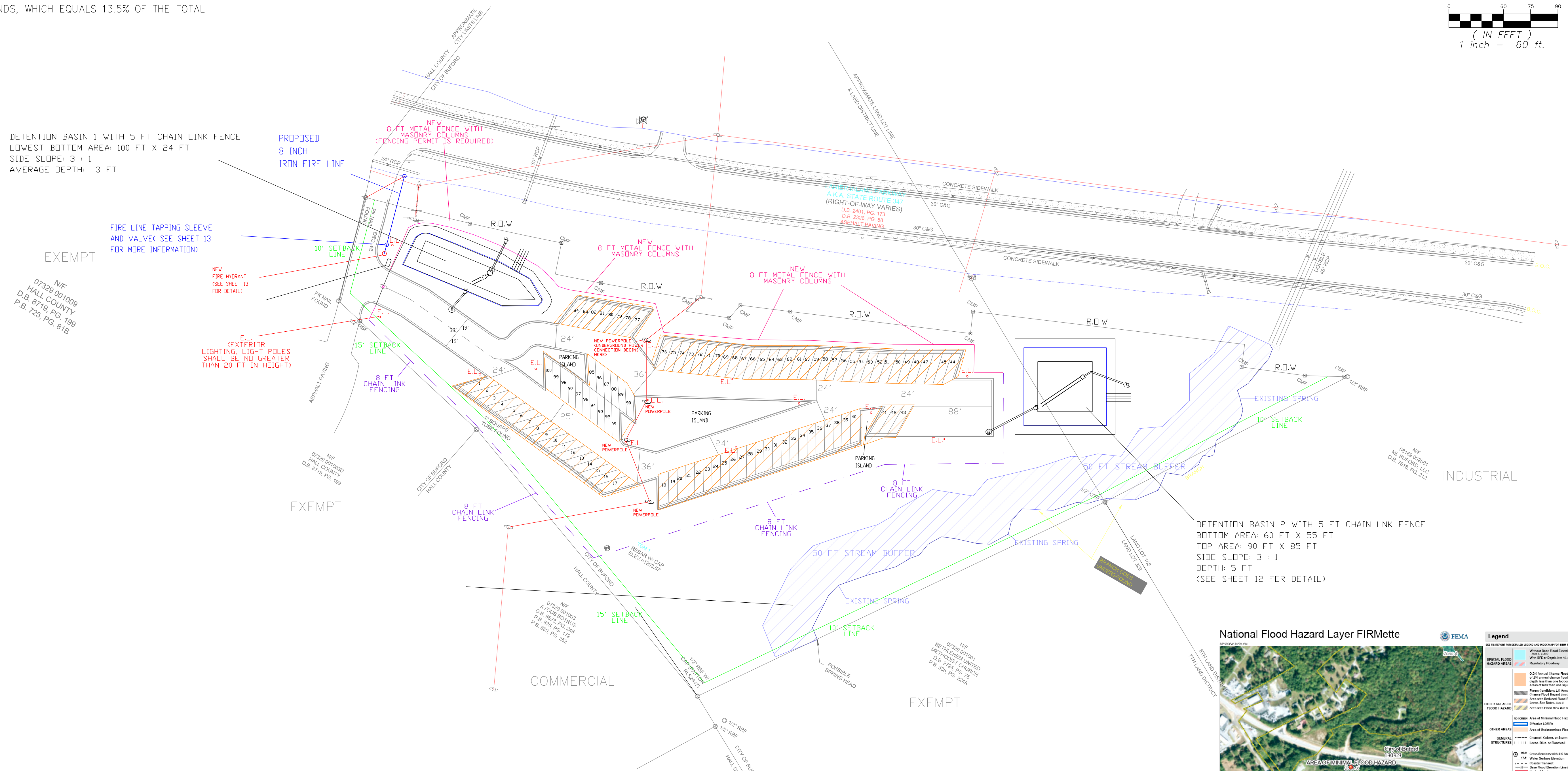
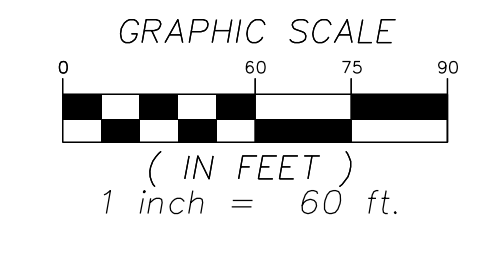
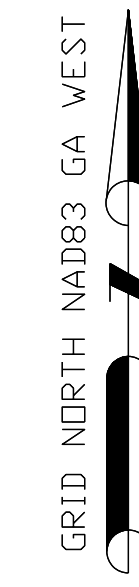


GENERAL LAYOUT FOR LANIER ISLANDS PARKWAY RV/BOAT STORAGE FACILITY

GENERAL LAYOUT NOTES:

1. NO CERTIFICATE OF OCCUPANCY WILL BE ISSUED UNTIL ALL SITE IMPROVEMENTS HAVE BEEN COMPLETED.
2. SIGNS, LOCATION, NUMBER, AND SIZE ARE NOT APPROVED UNDER THIS PERMIT. A SEPERATE PERMIT IS REQUIRED FOR EACH SIGN.
3. ALL CONSTRUCTION SHALL COMPLY WITH CITY OF BUFORD STANDARDS AND SPECIFICATIONS.
4. PARKING SIZE DIMENSIONS ARE 35 FT LONG BY 10 FT WIDE.
5. A SEPERATE PERMIT WILL BE REQUIRED FOR THE INSTALLATION OF THE FENCE AND PARKING CANOPY.
6. THERE ARE 4 PARKING ISLANDS. THERE IS APPROX. 0.228 ACRES OF DEDICATED PARKING ISLANDS, WHICH EQUALS 13.5% OF THE TOTAL AREA.



DETENTION BASIN 1 WITH 5 FT CHAIN LINK FENCE
LOWEST BOTTOM AREA: 100 FT X 24 FT
SIDE SLOPE: 3 : 1
AVERAGE DEPTH: 3 FT

FIRE LINE TAPPING SLEEVE
AND VALVE SEE SHEET 13
FOR MORE INFORMATION

EXEMPT
NIF
07328 001009
HALL COUNTY
D.B. 8719, PG. 199
P.B. 725, PG. 818

NEW FIRE HYDRANT
(SEE SHEET 13
FOR DETAIL)

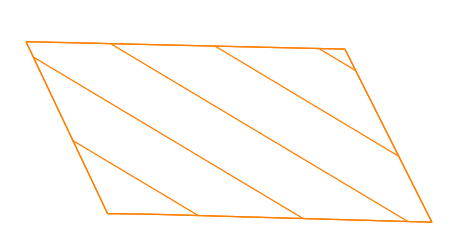
EL (EXTERIOR
LIGHTING, LIGHT POLES
SHALL BE NO GREATER
THAN 20 FT IN HEIGHT)

EXEMPT
NIF
07328 001009
HALL COUNTY
D.B. 8719, PG. 199
P.B. 725, PG. 818

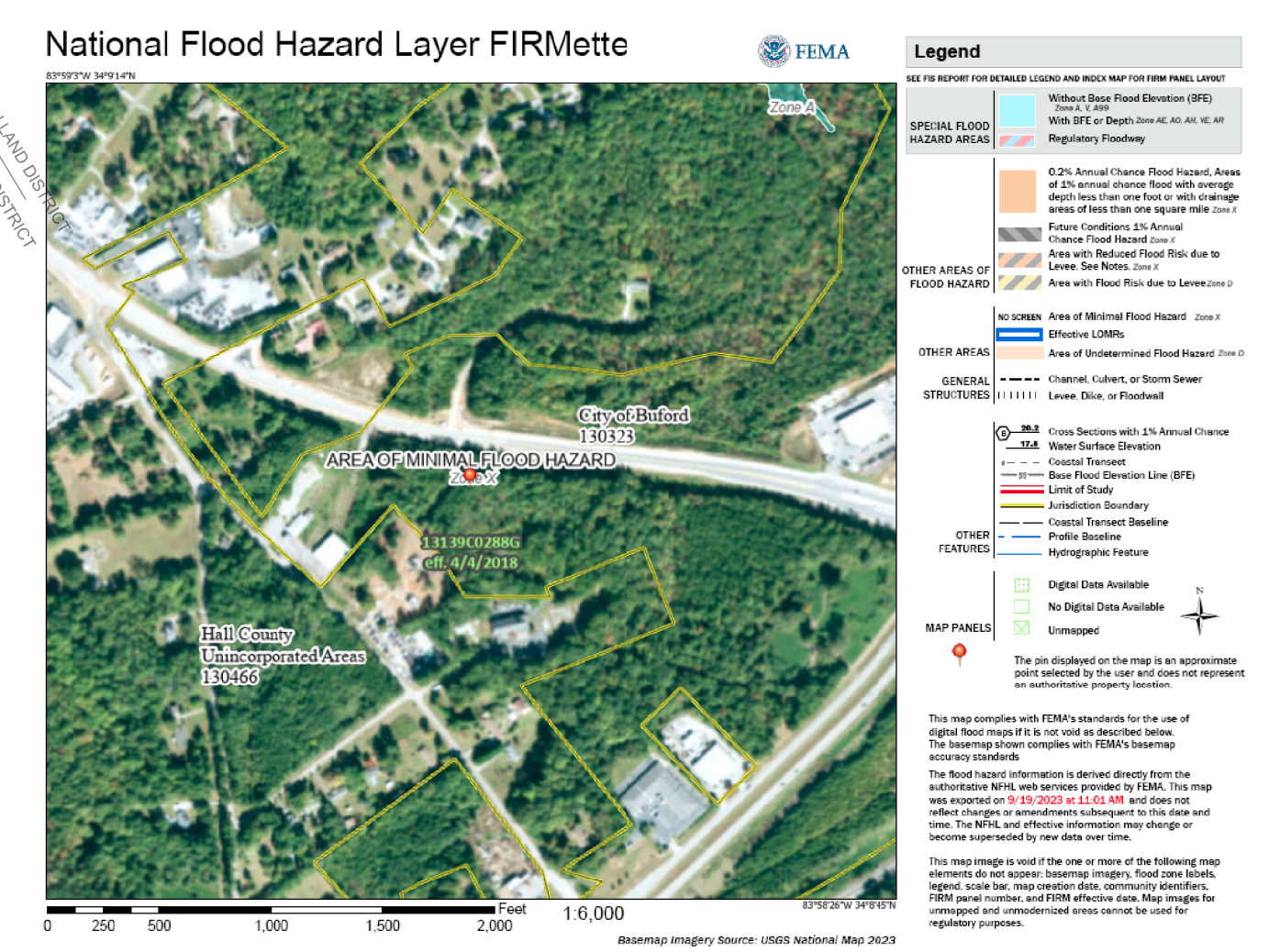
EXEMPT
NIF
07328 001003
HALL COUNTY
D.B. 8719, PG. 199
P.B. 725, PG. 818

EXEMPT
NIF
07328 001001
HALL COUNTY
D.B. 8719, PG. 199
P.B. 725, PG. 818

DETENTION BASIN 2 WITH 5 FT CHAIN LNK FENCE
BOTTOM AREA: 60 FT X 55 FT
TOP AREA: 90 FT X 85 FT
SIDE SLOPE: 3 : 1
DEPTH: 5 FT
(SEE SHEET 12 FOR DETAIL)



DESIGNATES THE LOCATION OF A CANOPY
OVER THE PARKING SPACES (A SEPERATE
PERMIT IS REQUIRED FOR INSTALLATION)



24 HOUR EMERGENCY CONTACT TORRIS J. BABBS, P.E.
PHONE NO. 770.878.2338

DESIGN PROFESSIONAL: MR. TORRIS J. BABBS, P.E.
LEVEL 2 CERTIFICATION NUMBER: 60725

REVISIONS		
NO.	DATE	BY

PREPARED BY:
BABBS ENGINEERING CONSULTANTS, LLC

FINAL STABILIZATION PHASE
5574 LANIER ISLANDS PKWY. BUFORD GA. 30518
OWNER MR. JUAN JIMENEZ
PREPARED FOR: CITY OF BUFORD, GA.

SCALE:	1:60
DWN	KJP
CHK	TJB
APP	TJB
FILE:	
PROJ:	PR900PCPE082022
DATE:	11/13/23
SHEET	2 OF 17

