

# Concept Plan

## Sapulpa Development Land

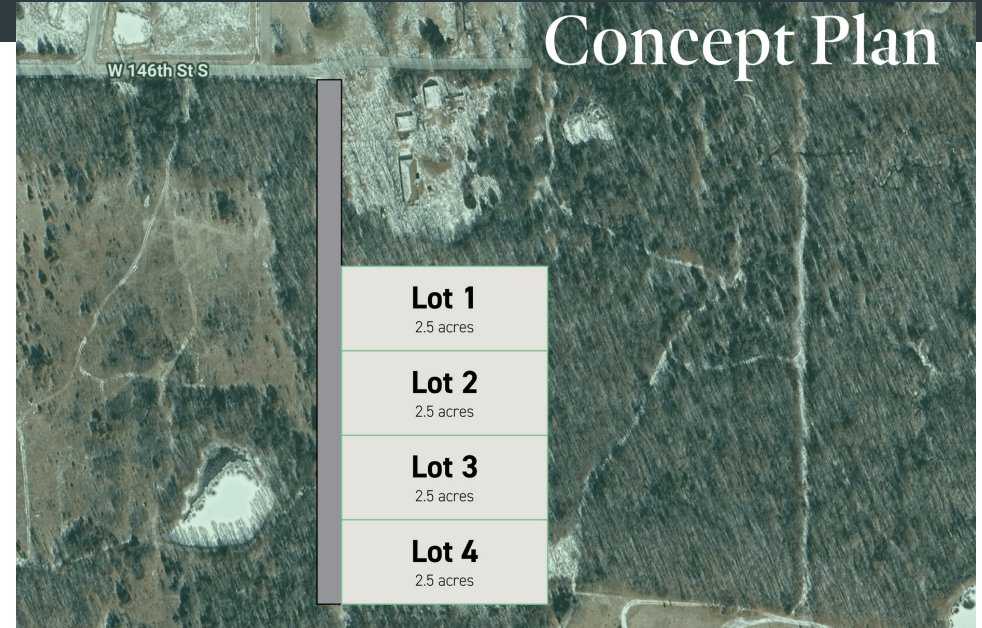
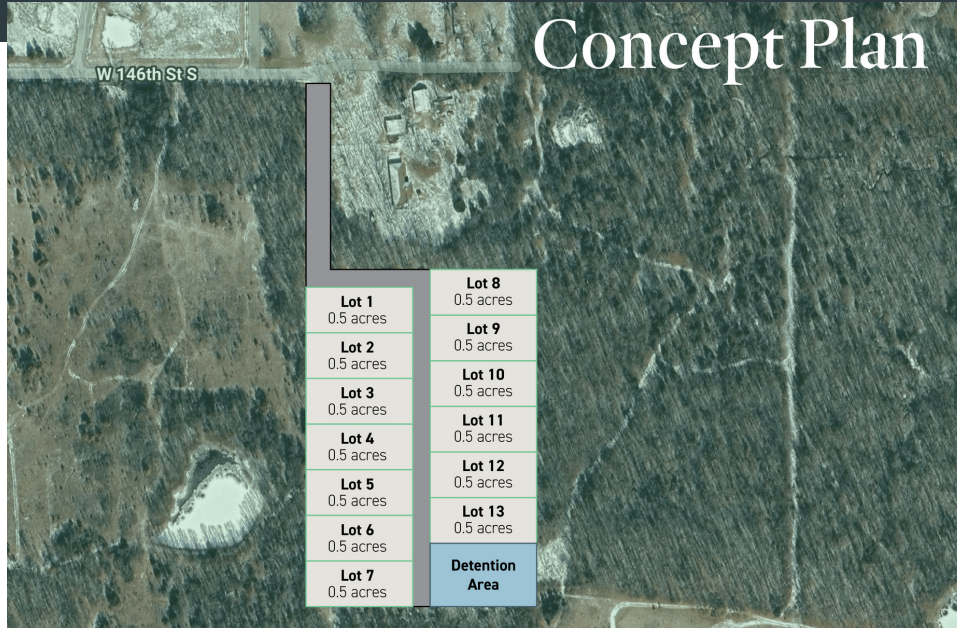
Hickory Hollow  
14811 S 106th W Ave,  
Sapulpa, OK 74066



Drew Dossey, CCIM  
Senior Vice President  
918.740.7707  
ddossey@mcgrawcp.com

**MCP** MCGRAW  
COMMERCIAL  
PROPERTIES

# Property Summary



## Property Description

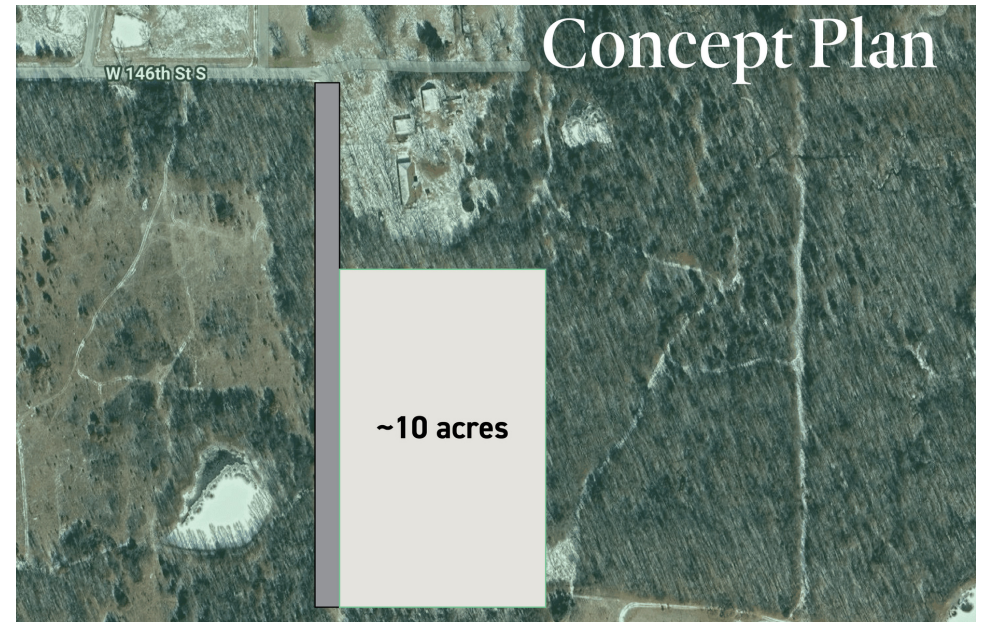
Currently operating mobile home park on ~10 acres in Sapulpa Oklahoma. 6" water line to site. Ideal for an infill subdivision.

## Property Highlights

- 6" water line
- Lonestar Schools

## Offering Summary

<b>Sale Price:</b>	\$350,000
<b>Lot Size:</b>	10.04 Acres



# Contact

**Drew Dossey, CCIM**

Senior Vice President

918.740.7707

[ddossey@mcgrawcp.com](mailto:ddossey@mcgrawcp.com)

**MCP** MCGRAW  
COMMERCIAL  
PROPERTIES

MCP - McGraw Commercial Properties

4105 S. Rockford Ave.

Tulsa, OK 74105

[mcgrawcp.com](http://mcgrawcp.com)

<b>Lot 1</b> 0.5 acres	<b>Lot 8</b> 0.5 acres
<b>Lot 2</b> 0.5 acres	<b>Lot 9</b> 0.5 acres
<b>Lot 3</b> 0.5 acres	<b>Lot 10</b> 0.5 acres
<b>Lot 4</b> 0.5 acres	<b>Lot 11</b> 0.5 acres
<b>Lot 5</b> 0.5 acres	<b>Lot 12</b> 0.5 acres
<b>Lot 6</b> 0.5 acres	<b>Lot 13</b> 0.5 acres
<b>Lot 7</b> 0.5 acres	<b>Detention Area</b>

DISCLAIMER: This information has been obtained from sources deemed reliable. MCP has not verified this data for accuracy and assumes no responsibility for errors or omissions in any content. You and / or your advisors should conduct a thorough, independent investigation of the property to confirm all information and the suitability of the property for your needs.

Map data ©2025 Imagery ©2025 Airbus,  
Maxar Technologies