

OFFICE OR MEDICAL OFFICE FOR SUBLEASE/SALE

# 9404 HIGHWAY 78

LADSON, SC 29456



**BRIDGE  
COMMERCIAL**



**Base Rental Rate:** 32.00/RSF, NNN

**Available SF:** 3,000 - 6,390 SF

**Address:** 9404 Highway 78  
Ladson, SC 29456

**Premises:** Suite 200

**TI Allowance:** Negotiable

**MARK MATTISON** SIOR, CCIM

+1 843 437 1545

mark.mattison@bridge-commercial.com

**MATT JOHNSON**

+1 985 237 2580

matt.johnson@bridge-commercial.com

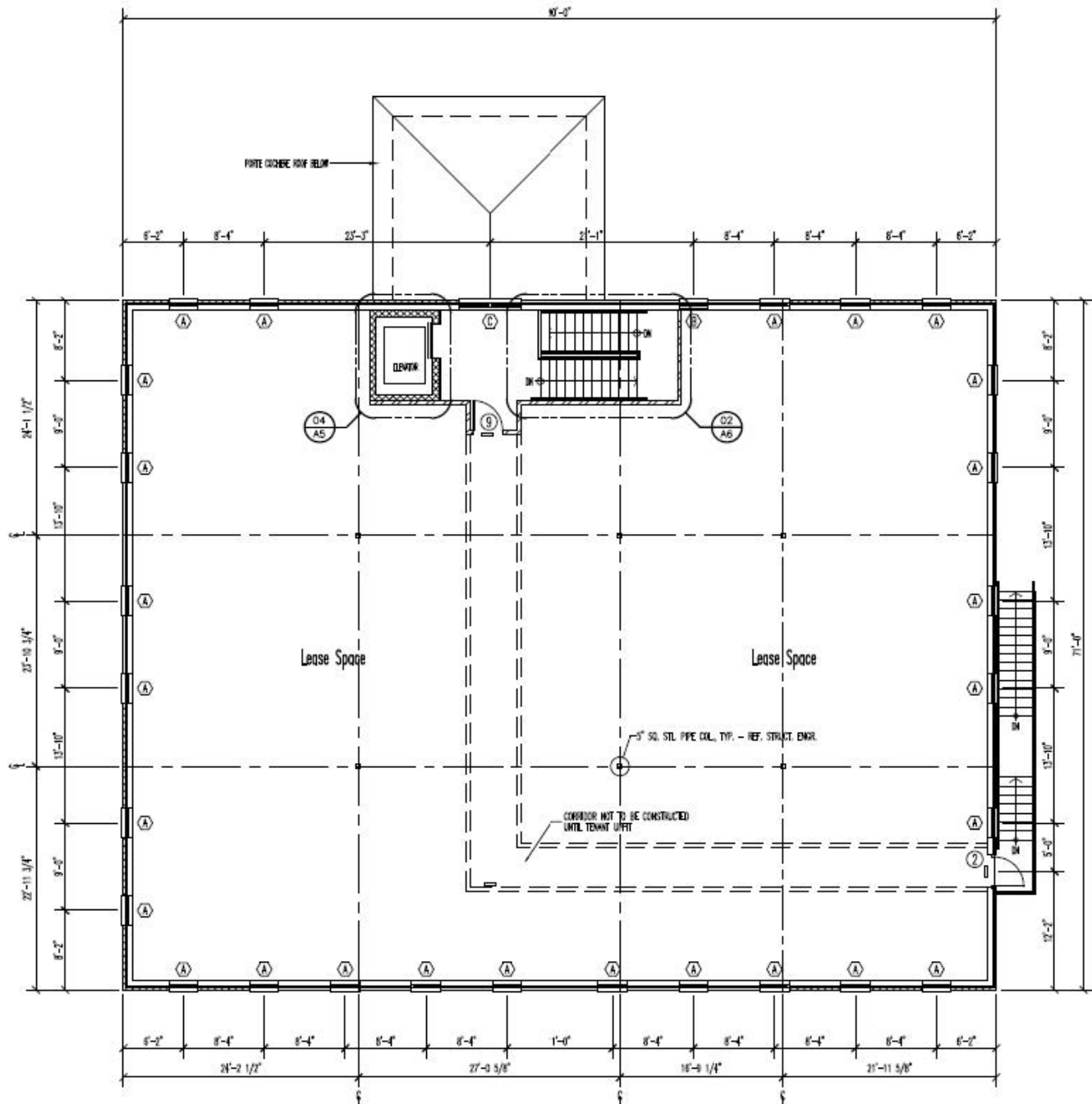
Bridge Commercial makes no guarantees, representations or warranties of any kind, expressed or implied, including warranties of content, accuracy and reliability. Any interested party should do their own research as to the accuracy of the information. Bridge Commercial excludes warranties arising out of this document and excludes all liability for loss and damages arising out of this document.

[WWW.BRIDGE-COMMERCIAL.COM](http://WWW.BRIDGE-COMMERCIAL.COM)

# 9404 Highway 78

Ladson, SC 29456

## FLOOR PLAN



# 9404 Highway 78

Ladson, SC 29456

NEARBY AMENITIES



SOUTH CAROLINA DEPARTMENT OF MOTOR VEHICLES

9404 HIGHWAY 78

FUTURE REGIONAL HOSPITAL

# 9404 Highway 78

Ladson, SC 29456

LOCATION



**BRIDGE**  
COMMERCIAL



OFFICE OR MEDICAL OFFICE FOR SUBLEASE/SALE

# 9404 HIGHWAY 78

LADSON, SC 29456



**BRIDGE  
COMMERCIAL**



**Base Rental Rate:** 32.00/RSF, NNN

**Available SF:** 3,000 - 6,390 SF

**Address:** 9404 Highway 78  
Ladson, SC 29456

**Premises:** Suite 200

**TI Allowance:** Negotiable

**MARK MATTISON** SIOR, CCIM  
+1 843 437 1545  
mark.mattison@bridge-commercial.com

**MATT JOHNSON**  
+1 985 237 2580  
matt.johnson@bridge-commercial.com

Bridge Commercial makes no guarantees, representations or warranties of any kind, expressed or implied, including warranties of content, accuracy and reliability. Any interested party should do their own research as to the accuracy of the information. Bridge Commercial excludes warranties arising out of this document and excludes all liability for loss and damages arising out of this document.