

992 RANGEVIEW ROAD FOR LEASE



Total Area	20,400 SF	Asking Rate	\$4.25* PSF
Office Area	1,875 SF	TMI	\$2.55 PSF 2014
Clear Height	16'		
Shipping	1 Truck Level (10x10) 1 Drive In (10x10)		
Power	400 Amps	- Well Maintained Freestanding Building	
Possession	June 1 2015	- Fluorescent Lights in Warehouse	
Zoning	E2-21	- Good Parking & Power	
		- Great Access to Highways and Amenities	
		- *Rent To Escalate	

KEN DONNELLY**
BROKER
kdonnelly@indusite.com

LARRY D'ORSAY*SIOR
EXECUTIVE VICE PRESIDENT
ldorsay@indusite.com

JEFF STARKEY**
BROKER OF RECORD
jstarkey@indusite.com

MATT D'ORSAY*SIOR
SENIOR VICE PRESIDENT
mdorsay@indusite.com

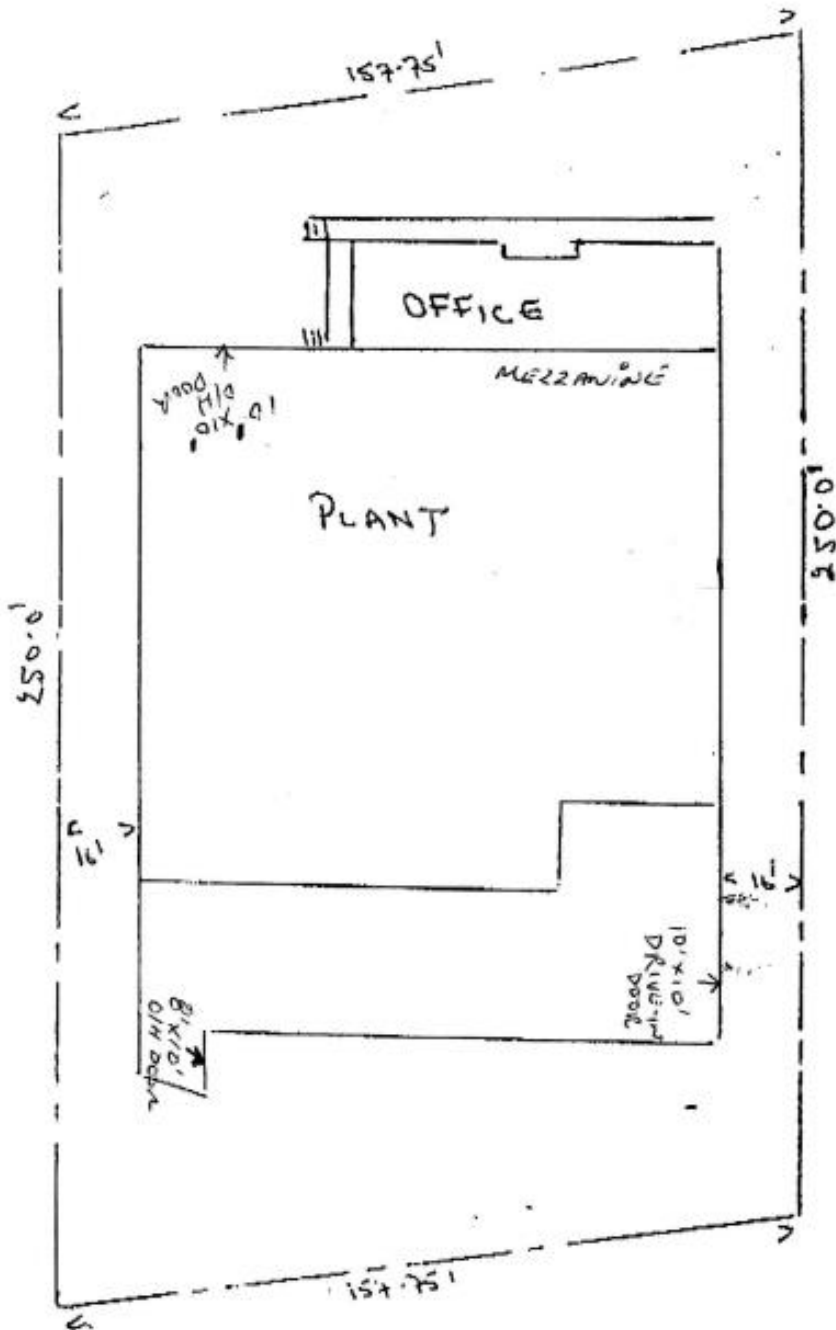


Sales Rep, Broker***

1015 Matheson Boulevard East, Suite 11 | Mississauga, ON L4W 3A4 | T: 905.624-3500 F: 905.624.2636 | WWW.INDUSITE.COM

ALL INFORMATION FURNISHED REGARDING PROPERTY FOR SALE OR LEASE IS FROM SOURCES DEEMED RELIABLE BUT NO WARRANTY OR REPRESENTATION IS MADE AS TO THE ACCURACY THEREOF AND THE SAME SUBMITTED SUBJECT TO ERRORS, OMISSIONS, CHANGE OF PRICE, RENTAL, OR OTHER CONDITIONS, PRIOR SALE OR LEASE, OR WITHDRAWAL WITHOUT NOTICE

992 RANGEVIEW ROAD FOR LEASE



1015 Matheson Boulevard East, Suite 11 | Mississauga, ON L4W 3A4 | T: 905.624-3500 F: 905.624.2636 | WWW.INDUSITE.COM

ALL INFORMATION FURNISHED REGARDING PROPERTY FOR SALE OR LEASE IS FROM SOURCES DEEMED RELIABLE BUT NO WARRANTY OR REPRESENTATION IS MADE AS TO THE ACCURACY THEREOF AND THE SAME SUBMITTED SUBJECT TO ERRORS, OMISSIONS, CHANGE OF PRICE, RENTAL, OR OTHER CONDITIONS, PRIOR SALE OR LEASE, OR WITHDRAWAL WITHOUT NOTICE

992 RANGEVIEW ROAD FOR LEASE



1015 Matheson Boulevard East, Suite 11 | Mississauga, ON L4W 3A4 | T: 905.624-3500 F: 905.624.2636 | WWW.INDUSITE.COM

ALL INFORMATION FURNISHED REGARDING PROPERTY FOR SALE OR LEASE IS FROM SOURCES DEEMED RELIABLE BUT NO WARRANTY OR REPRESENTATION IS MADE AS TO THE ACCURACY THEREOF AND THE SAME SUBMITTED SUBJECT TO ERRORS, OMISSIONS, CHANGE OF PRICE, RENTAL, OR OTHER CONDITIONS, PRIOR SALE OR LEASE, OR WITHDRAWAL WITHOUT NOTICE