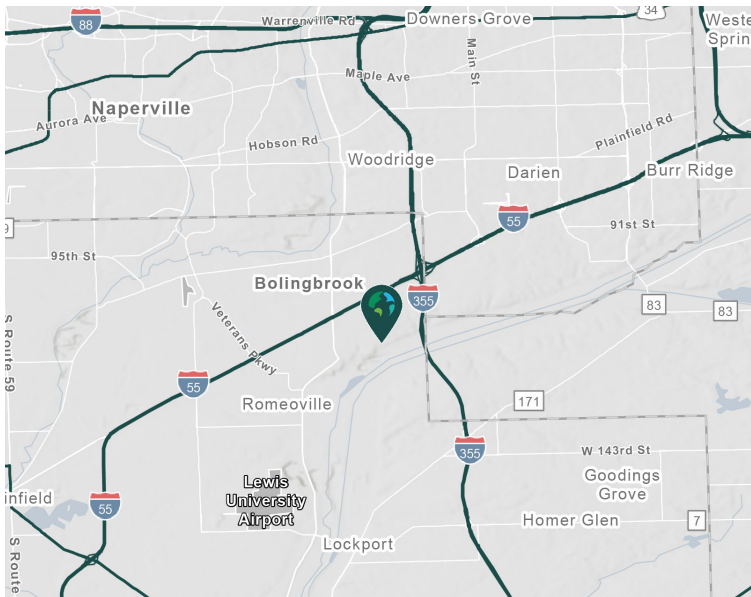


# 506,777 SF (Divisible)

**821 Bluff Rd.  
Romeoville, IL**

Prologis Romeoville



- Close proximity to I-55 & I-355 via Joliet Rd or Route 53
- Centrally located to BNSF, Union Pacific, CSX Intermodal facilities
- Low Will County taxes

## Property Features

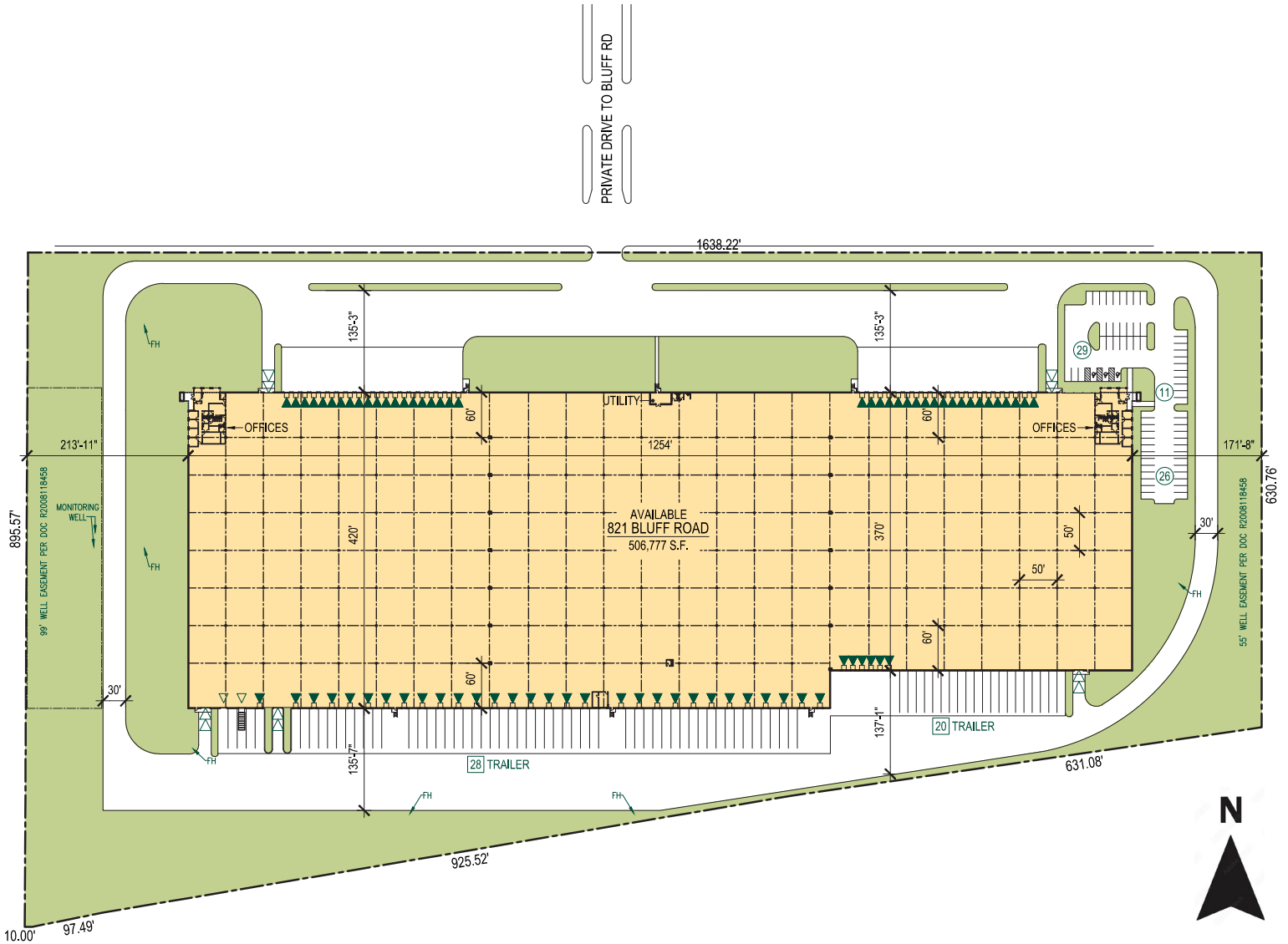
<b>Available Space</b>	506,777 SF
<b>Divisible To</b>	147,657 SF
<b>Office SF</b>	Unit A - 3,519 SF Unit B - 3,519 SF
<b>Clear Height</b>	32'
<b>Column Spacing</b>	50' x 50'
<b>Dock Doors</b>	79 (Expandable)
<b>Drive-in Doors</b>	5
<b>Trailer Parking Spaces</b>	48 (Expandable)
<b>Car Parking Spaces</b>	66 (Expandable)
<b>Sprinkler</b>	ESFR
<b>Lighting</b>	LED Motion Sensor



Unlock the full potential of your warehouse with one strategic, single-source partner.



## Full Building Site Plan



## CBRE

**CBRE**  
**Traci Payette**  
 traci.payette@cbre.com  
 ph +1 630 573 7104  
 cell +1 847 732 1214

**CBRE**  
**Stephanie Park**  
 stephanie.park@cbre.com  
 ph +1 630 573 7121  
 cell +1 773 415 0321

**CBRE**  
**Rowan McDonnell**  
 rowan.mcdonnell@cbre.com  
 ph +1 630 368 5840  
 cell +1 773 951 4045

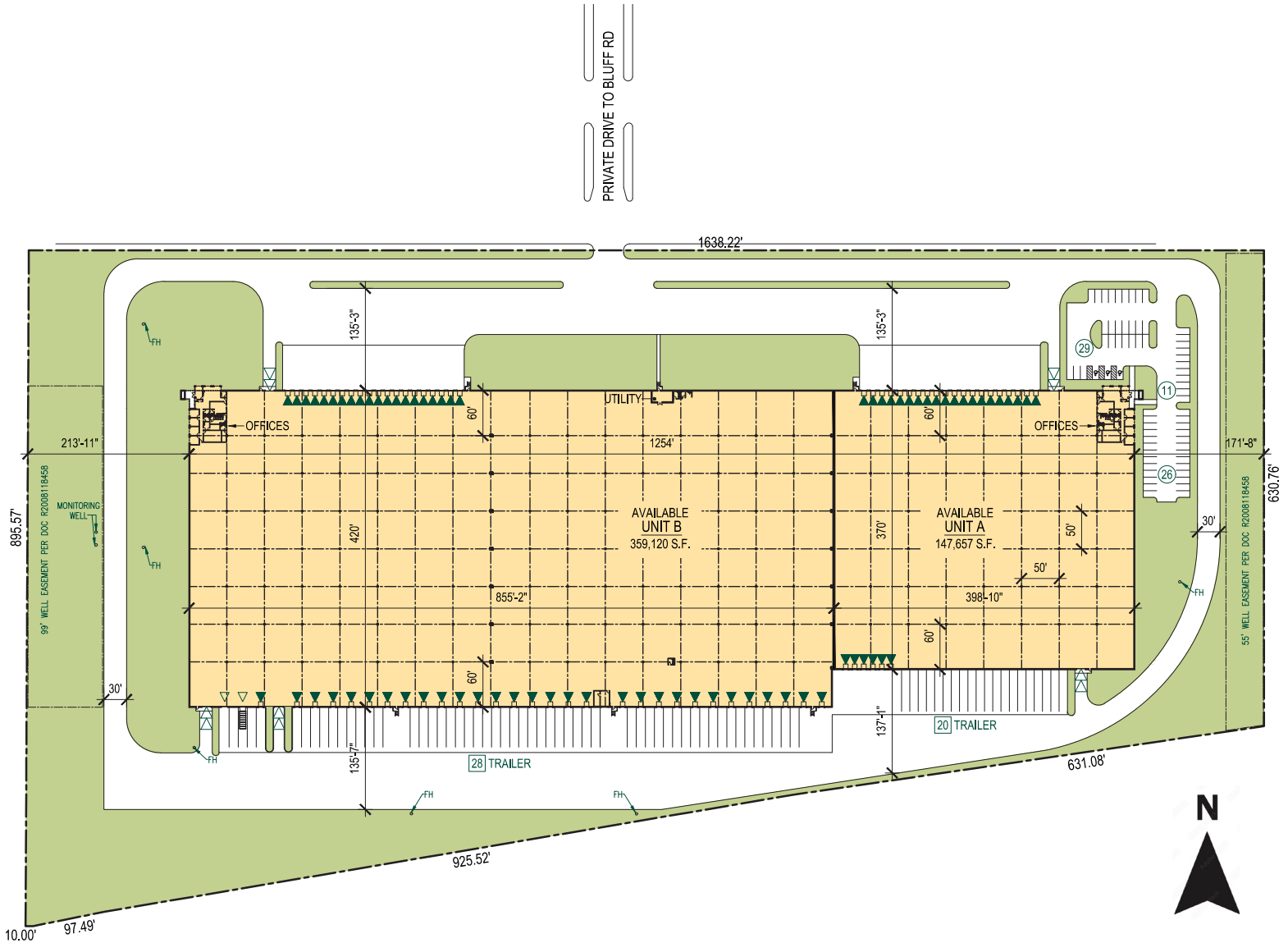
**PROLOGIS**  
**Trevor Jeske**  
 tjeske@prologis.com  
 cell +1 248 212 9014



Unlock the full potential of your warehouse with one strategic, single-source partner.



## Demised Site Plan



## CBRE

**CBRE**  
**Traci Payette**  
 traci.payette@cbre.com  
 ph +1 630 573 7104  
 cell +1 847 732 1214

**CBRE**  
**Stephanie Park**  
 stephanie.park@cbre.com  
 ph +1 630 573 7121  
 cell +1 773 415 0321

**CBRE**  
**Rowan McDonnell**  
 rowan.mcdonnell@cbre.com  
 ph +1 630 368 5840  
 cell +1 773 951 4045

**PROLOGIS**  
**Trevor Jeske**  
 tjjeske@prologis.com  
 cell +1 248 212 9014



Unlock the full potential of your warehouse with one strategic, single-source partner.



## CBRE

**CBRE**  
**Traci Payette**  
traci.payette@cbre.com  
ph +1 630 573 7104  
cell +1 847 732 1214

**CBRE**  
**Stephanie Park**  
stephanie.park@cbre.com  
ph +1 630 573 7121  
cell +1 773 415 0321

**CBRE**  
**Rowan McDonnell**  
rowan.mcdonnell@cbre.com  
ph +1 630 368 5840  
cell +1 773 951 4045

**PROLOGIS**  
**Trevor Jeske**  
tjeske@prologis.com  
cell +1 248 212 9014