

FOR LEASE

TURN-KEY PHYSIO/WELLNESS SPACE IN PRIME WHITE ROCK LOCATION

101A - 1440 George Street
White Rock, BC

GEORGE RICHMOND, Personal Real Estate Corporation
Commercial Sale and Leasing
Cell: 604-786-1094
george@commercialpropertiesgroup.ca



**COMMERCIAL
PROPERTIES
GROUP**

Office Line: 778-366-2640
www.commercialpropertiesgroup.ca

REBECCA MACLEOD, Personal Real Estate Corporation
Commercial Sale and Leasing
Cell: 778-316-3092
rebecca@commercialpropertiesgroup.ca

PROPERTY OVERVIEW



Commercial Properties Group is pleased to present a turnkey ground-floor physiotherapy and wellness clinic for lease at 101A-1440 George Street in the heart of White Rock's city centre. This 2,789 SF space is fully improved and move-in ready, ideally configured for physiotherapy, medical, or allied health uses. The layout includes seven treatment rooms, a professional reception area, staff room, washroom, kitchen, and two private change rooms, along with designated areas for consultation and administrative functions. Previously operating as a physiotherapy clinic, the unit is equally well suited for medical specialists, massage therapy, dental, veterinary, fitness, professional services, or retail. The premises offer four dedicated parking stalls and benefit from ample street parking. Situated in a high-visibility location surrounded by new high-rise developments and with easy transit access, this is a rare opportunity to secure a highly functional, street-front commercial space in one of White Rock's rapidly growing areas. Asking \$35.00 PSF net, plus \$16.00 PSF additional rent. Available for immediate possession.



CR-2 - Lower Town Centre Area
Commercial/Residential Zone**



Size: 2,789 SF*



Availability: Immediately



Parking: 4 exclusive stalls plus streetside parking available



Signage: Opportunities available



Asking Rent: \$35.00



Access: Centrally located

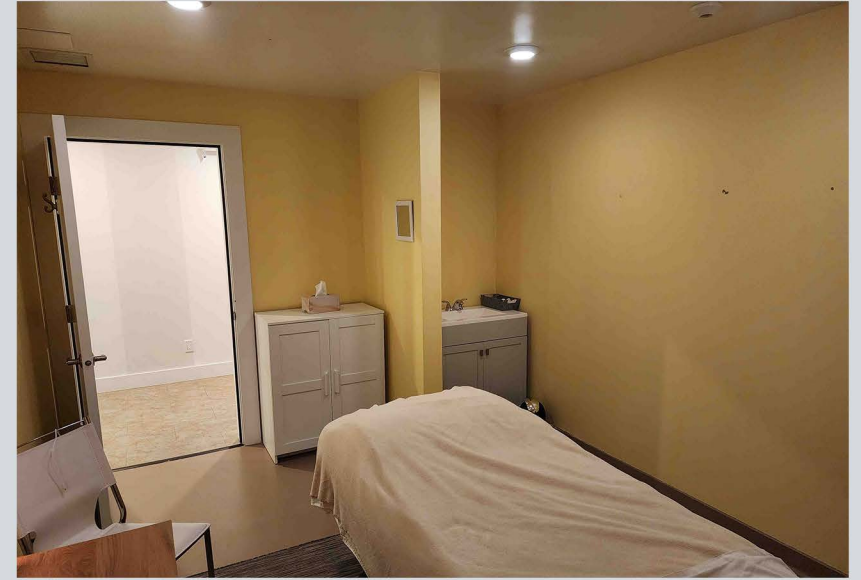


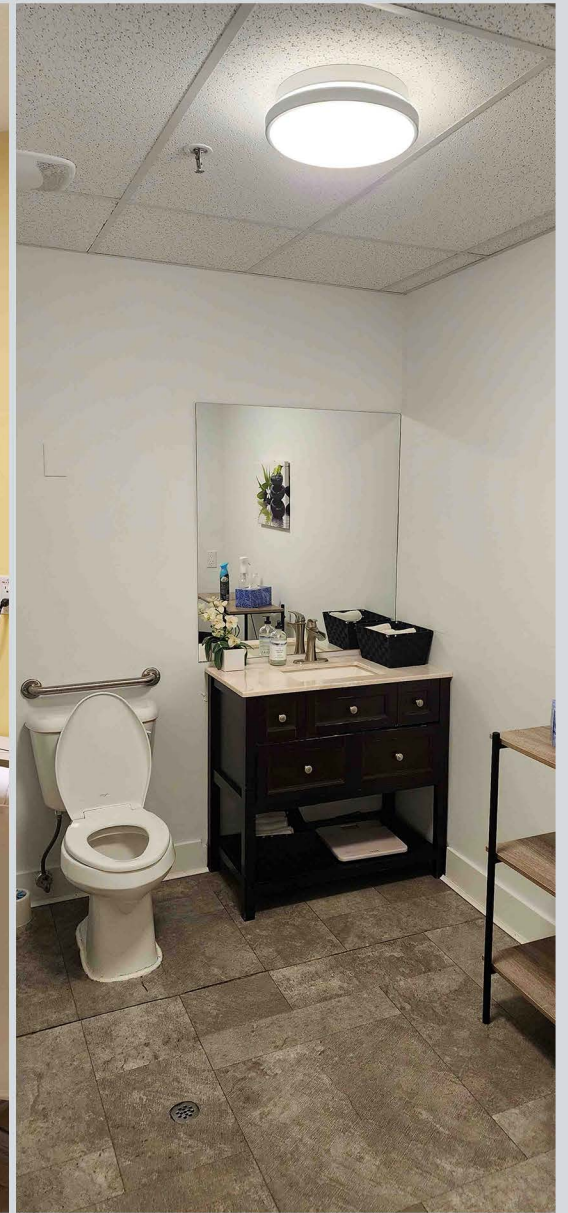
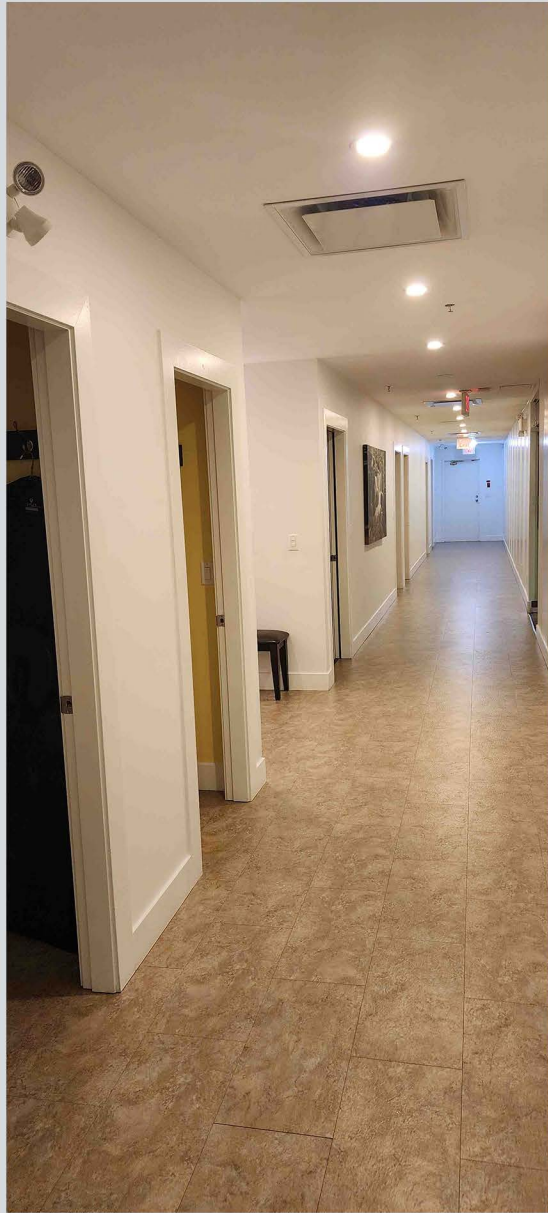
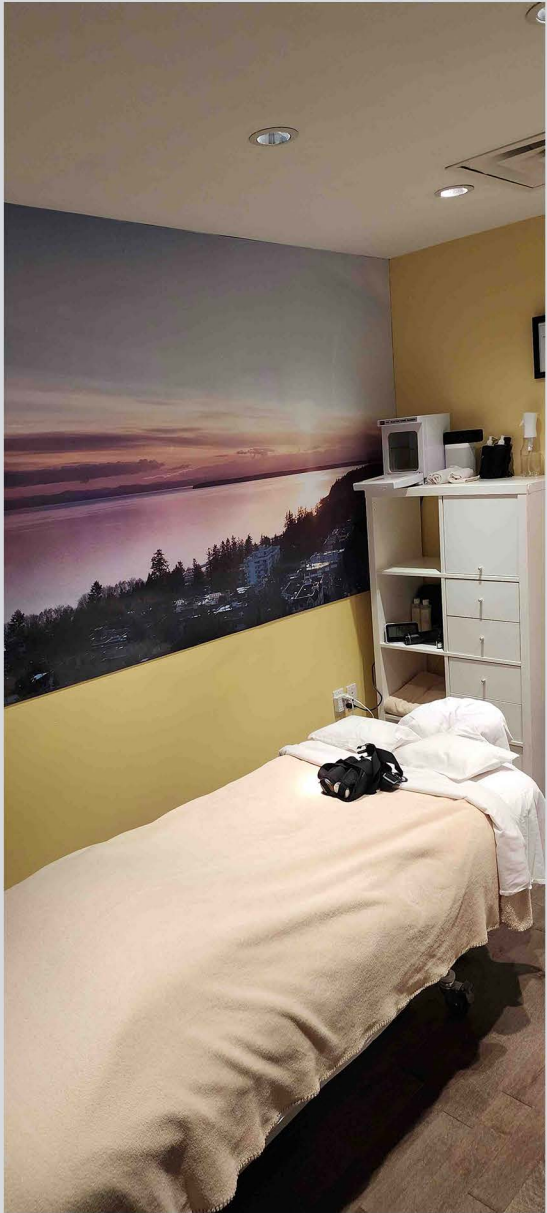
Additional Rent: \$16.50 PSF

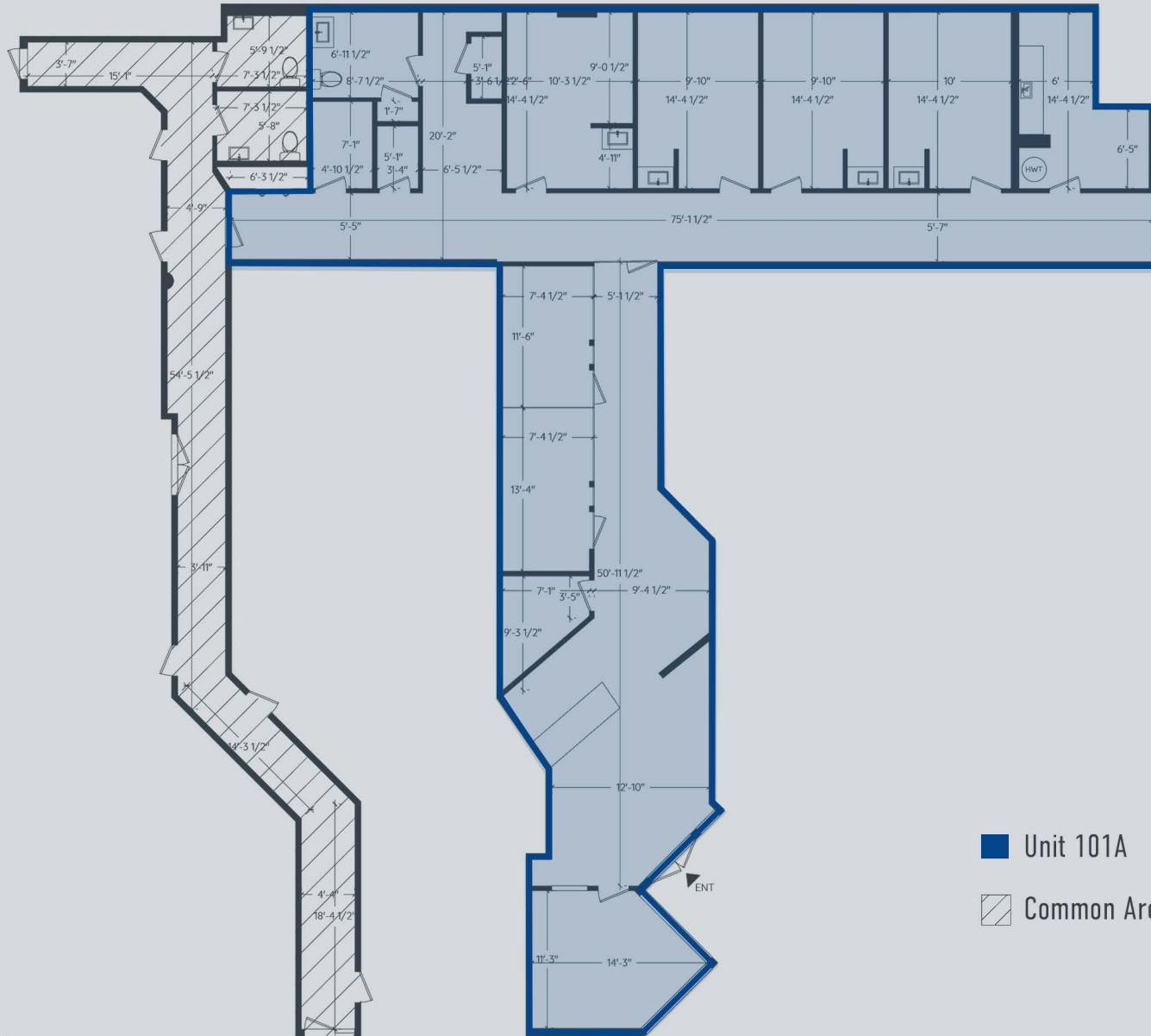


101A - 1440 George St, White Rock BC

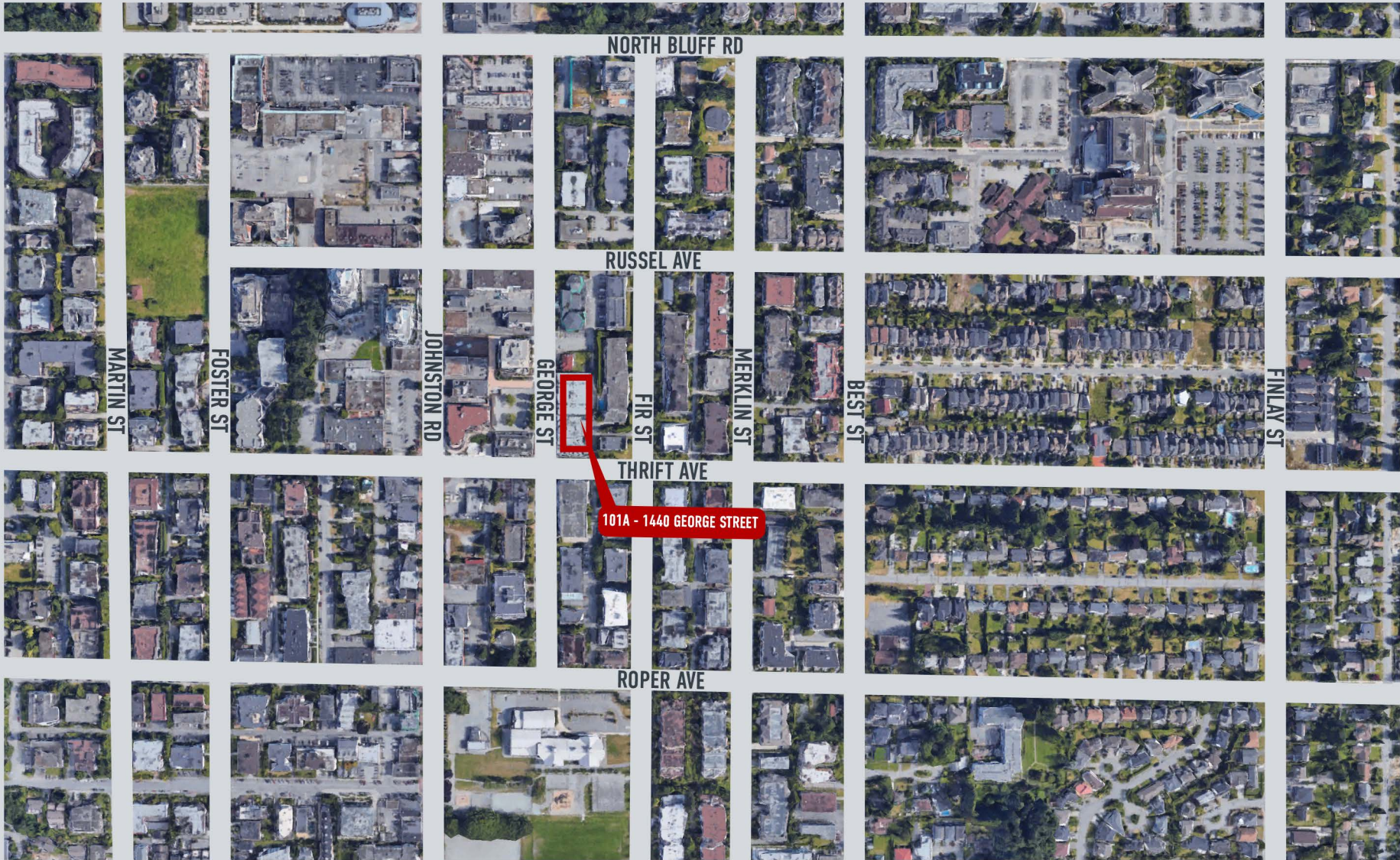
*Unit of measurement provided by the Landlord. Subject to verification should the tenant deem it necessary. **Zoning: Tenant is responsible for verifying possible uses as per the zoning.







- Unit 101A
- Common Area



101A - 1440 GEORGE STREET

CONTACT US



GEORGE RICHMOND, PREC*

Commercial Sale and Leasing

*Personal Real Estate Corporation

Cell: 604-786-1094

george@commercialpropertiesgroup.ca

Office Line: 778-366-2640

www.commercialpropertiesgroup.ca

REBECCA MACLEOD, PREC*

Commercial Sale and Leasing

*Personal Real Estate Corporation

Cell: 778-316-3092

rebecca@commercialpropertiesgroup.ca

RE/MAX
COMMERCIAL

©2025 Re/Max Commercial Advantage All Rights Reserved. E&O.E. All rights reserved. The information contained in this communication is strictly confidential. This information has been obtained from sources believed to be reliable but has not been verified. No warranty or representation, express or implied, is made as to the condition of the property (or properties) referenced herein or as to the accuracy or completeness of the information contained herein, and same is submitted subject to errors, omissions, change of price, rental or other conditions, withdrawal without notice, and to any special listing conditions imposed by the property owner(s). Any projections, opinions or estimates are subject to uncertainty and do not signify current or future property performance.