

CRAWFORD AUSTIN INDUSTRIAL

330 E. 40TH ST.
LUBBOCK, TX 79404

WAREHOUSE SPACE
FOR LEASE



DETAILED SUMMARY

LEASE RATE	\$1,200/month + utilities
SUITE SF	2,100 SF
OHD's	1 drive in 10'X12' doors
RESTROOMS	1

PROPERTY COMMENTS

Grade level 2,100 SF unit available for lease. Concrete construction building. . Rear gas fired heaters for warehouse. Office/ showroom area built out in 2016. Approximately 600 SF of office/showroom and 1,500 SF warehouse. New lighting and whiteboxed warehouse area. Please no game room or entertainment use inquiries.



Wilkerson

PROPERTIES INC.

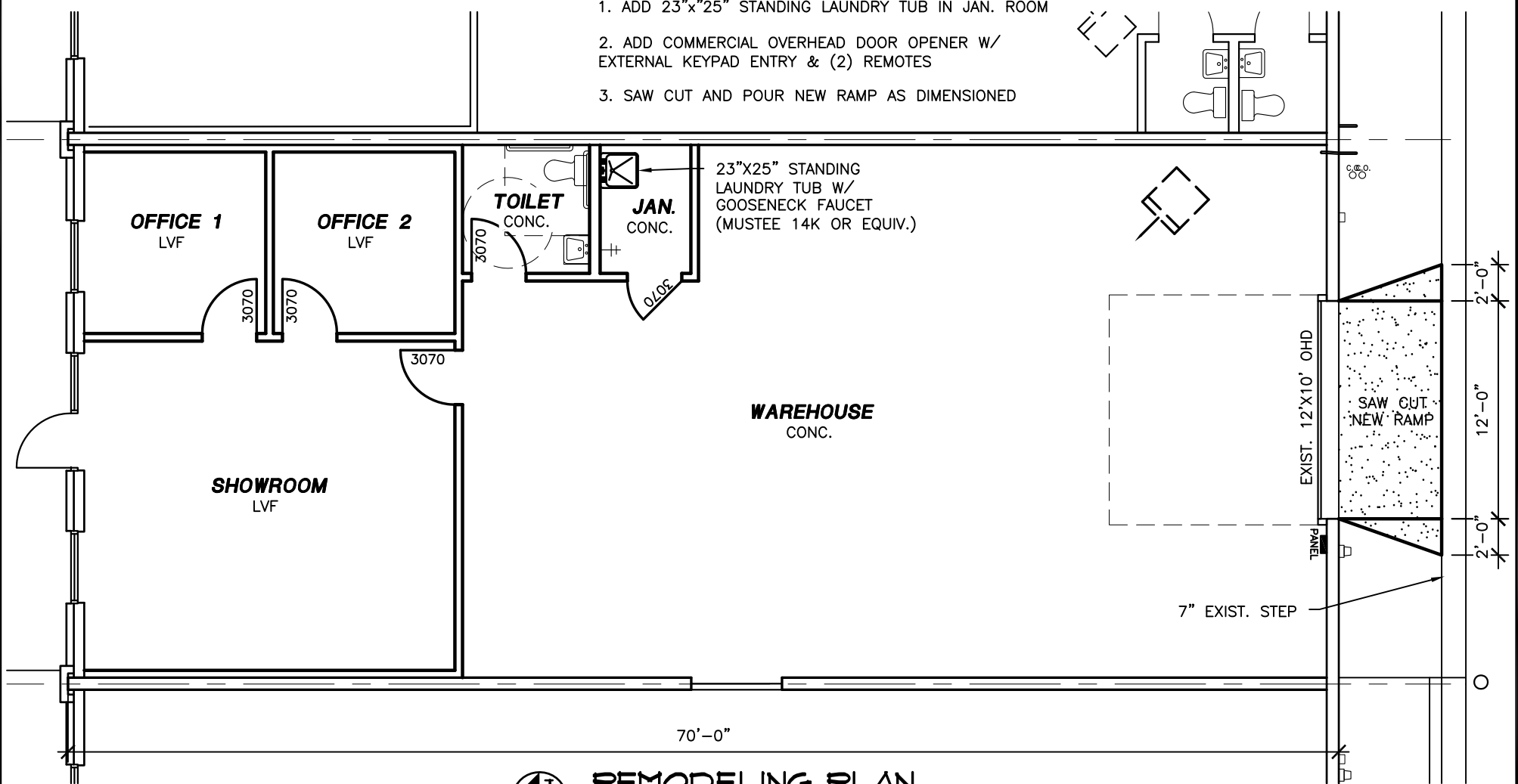
Commercial & Industrial Real Estate Services

Will Wilkerson 214.843.8221

will@wilkersonproperties.com

LANDLORD IMPROVEMENTS

1. ADD 23"x25" STANDING LAUNDRY TUB IN JAN. ROOM
2. ADD COMMERCIAL OVERHEAD DOOR OPENER W/ EXTERNAL KEYPAD ENTRY & (2) REMOTES
3. SAW CUT AND POUR NEW RAMP AS DIMENSIONED



REMODELING PLAN

SCALE: 1/8" = 1'-0"

EXHIBIT "B"



Commercial & Industrial
Development, Management & Brokerage
Phone: (806) 474-2223
Fax: (806) 474-2216
501 E. 66th Street
Lubbock, Texas 79404

Crawford-Austin Industrial
330 East 40th Street
Lubbock, Texas 79404

Date: 06/21/2015
Drawn by: JWT
Checked by:

Rev:

A1