

NOW LEASING: LELAND INNOVATION PARK

75,000 SF AVAILABLE, 5,000 SF MINIMUM

LELAND, NORTH CAROLINA | BRUNSWICK COUNTY





OUR TEAM

WILL LEONARD, SIOR

Senior Vice President

+ 1 910.344.1015 direct

+ 1 910.233.5351 mobile

wleonard@capefearcommercial.com

KEITH AUSTIN

Senior Vice President

+ 1 910.344.1003 direct

+ 1 910.352.3660 mobile

keith@capefearcommercial.com



102 Autumn Hall Drive | Suite 210 |

Wilmington, NC 28403

p. 910.344.1000 f. 910.344.1020

capefearcommercial.com



SUMMARY

Now Preleasing—Up to 75,000 SF (5,000—20,000 SF) available for lease, in Leland Innovation Park, a premier light industrial and distribution hub in Brunswick County, North Carolina. The total project will be 175,200 SF between three buildings.

Strategically positioned just off US Highway 74/76 with two (2) immediate access points to I-140 (Wilmington Bypass), the site offers unparalleled connectivity to the Greater Wilmington area and all major distribution networks. This proven industrial corridor is home to established operations such as Coca-Cola’s regional distribution center, Bradford Products, Victaulic, Adam’s Beverages’ regional distribution center, and the future home of US MgO’s sheathing panel manufacturing facility. The Park provides seamless access to regional, state, and national markets.

The property is zoned Innovation District (ID) by the Town of Leland, supporting industrial, R & D, and distribution related uses. Utilities include public water and sewer through Brunswick County, Piedmont Natural Gas, and fiber internet capabilities. Additional conceptual development plans are available upon request.

LOCATION	Leland Innovation Park Industrial Boulevard Leland, Brunswick County, NC 28451
PARCEL ID	0280000874
ZONING	ID—Innovation District—Town of Leland
SPACE DESCRIPTION	First generation modern tilt-wall flex/industrial space for lease in increments of 5,000 SF up to 75,000 SF The building consists of 15 bays, 5,000 SF each. Each unit is equipped with a 14’ x 16’ grade-level drive-in door and 20’ clear ceiling height. Column spacing is 50’ x 50’. Full wet piped ESFR fire suppression system, 6 inch reinforced slab. Approximately 130 parking spaces will be delivered with the first building. 5,000 SF turnkey spaces with office buildout available at delivery
UTILITIES	Water and sewer available through Brunswick County. Piedmont Natural Gas is also available along with fiber internet capabilities.
PRICE	\$16.00 PSF NNN. <i>Please inquire regarding lease rates for larger spaces.</i>

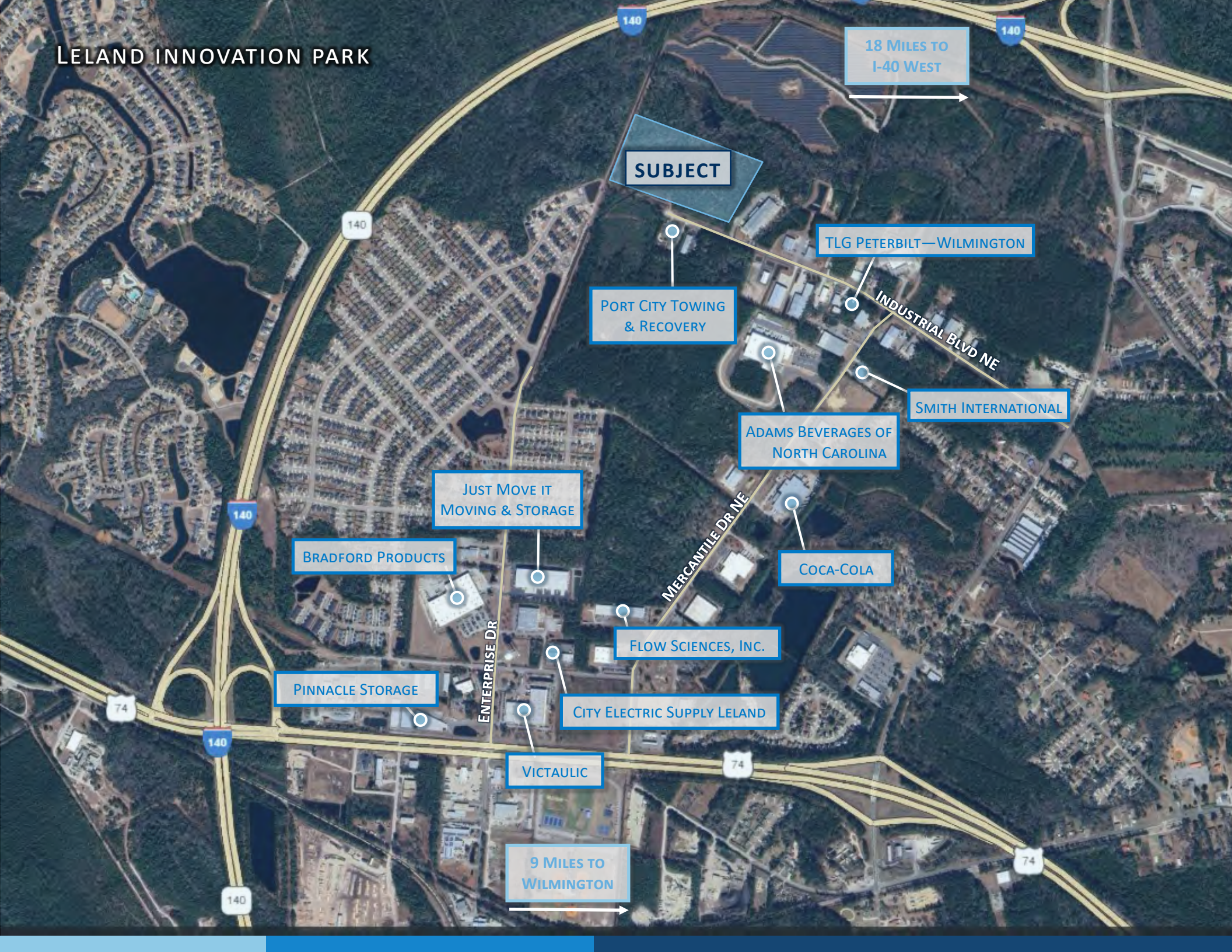


MARKET SUMMARY

- + Innovation District zoning by the Town of Leland attracts skilled labor and technical jobs in close proximity to retail and personal-service businesses.
- + Leland, NC is experiencing robust population growth, fueled by the coastal migration phenomenon of inbound moves to the Southeastern region.
- + Leland Innovation Park hosts the region's largest concentration of world-class companies, including Coca Cola, Adams Beverages, Victaulic, Bradford Products, TLG Peterbilt, Source one & Flow Sciences.
- + Located just off Highway 74/76 with two close access points to I-140 in a proven industrial corridor with successful neighboring tenants.
- + Unparalleled access to all parts of the Greater Wilmington area



LELAND INNOVATION PARK



SUBJECT

18 MILES TO
I-40 WEST

TLG PETERBILT—WILMINGTON

PORT CITY TOWING
& RECOVERY

INDUSTRIAL BLVD NE

SMITH INTERNATIONAL

ADAMS BEVERAGES OF
NORTH CAROLINA

JUST MOVE IT
MOVING & STORAGE

BRADFORD PRODUCTS

COCA-COLA

MERCANTILE DR NE

FLOW SCIENCES, INC.

PINNACLE STORAGE

CITY ELECTRIC SUPPLY LELAND

VICTAULIC

9 MILES TO
WILMINGTON

140

140

140

140

74

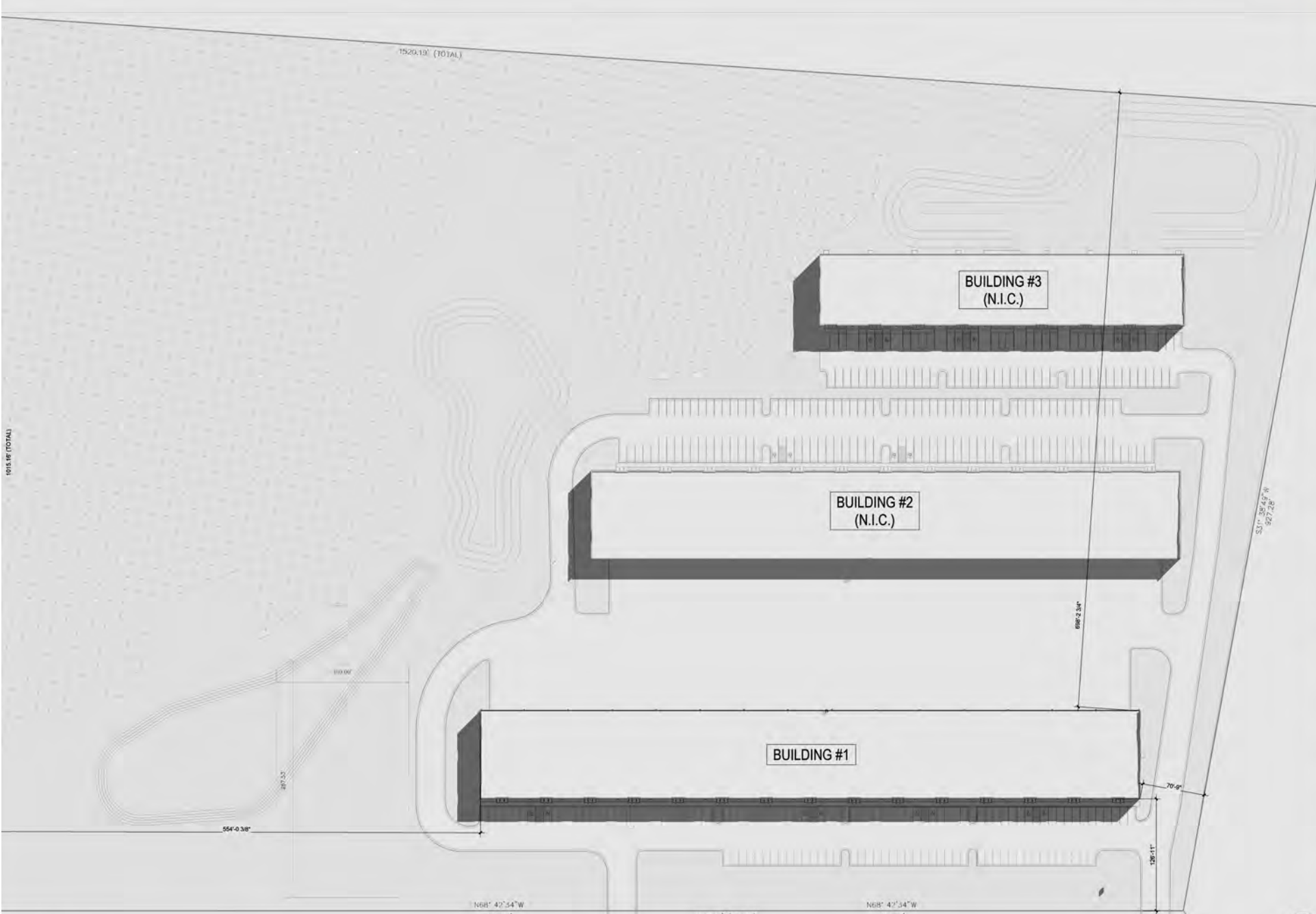
140

140

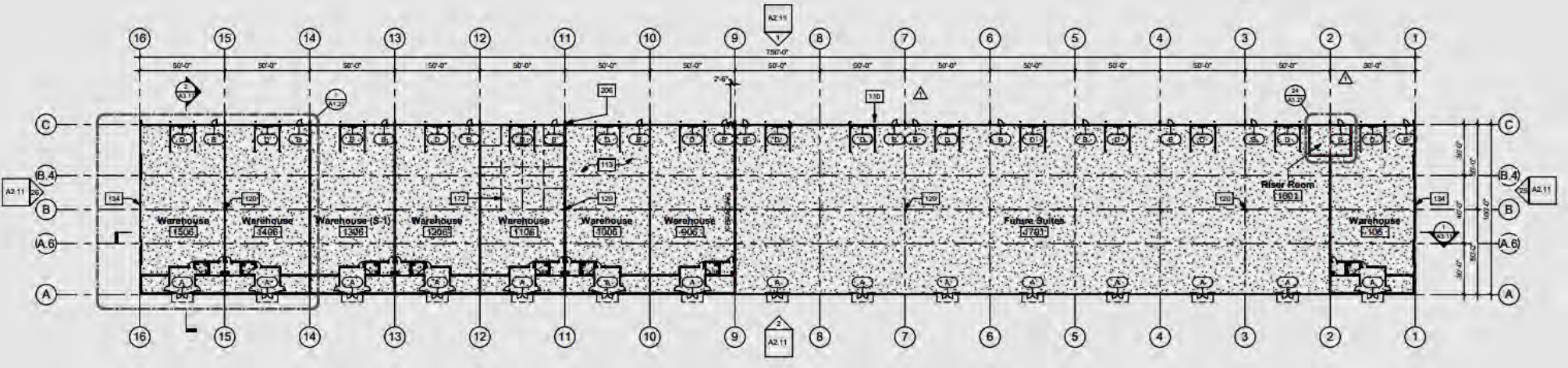
74

74

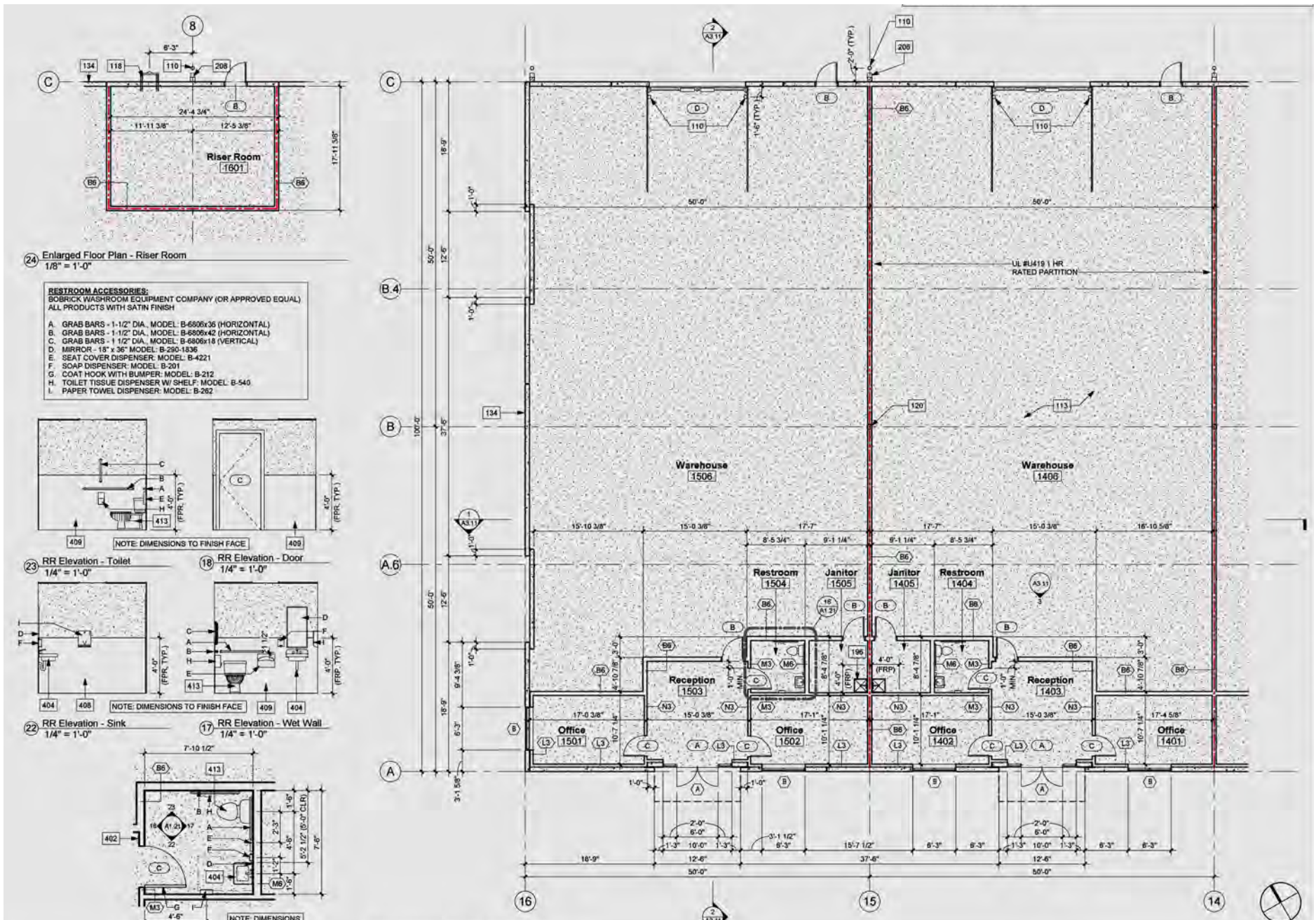
SITE PLAN



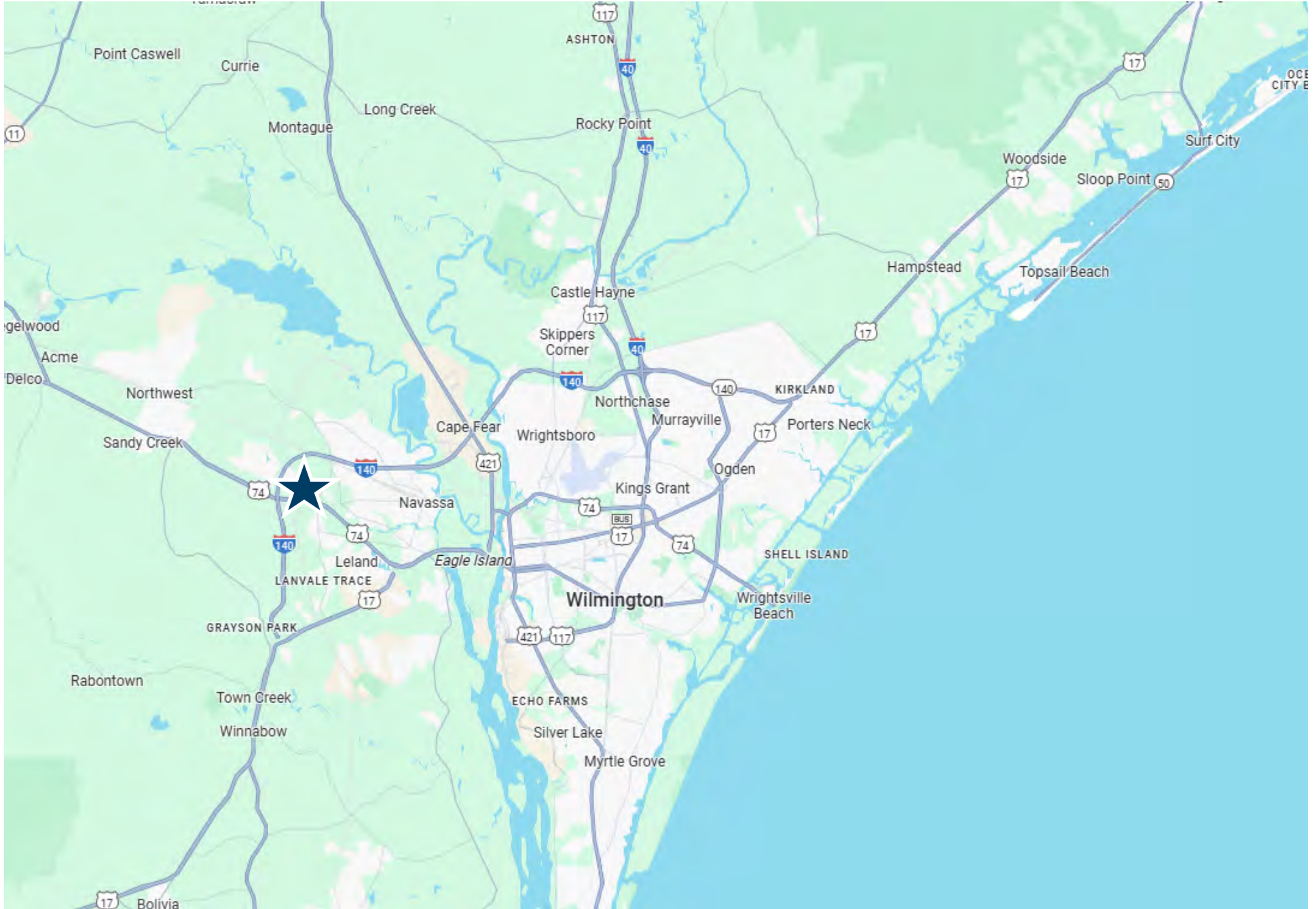
FLOORPLAN



FLOORPLAN



LOCATION MAP



MARKET OVERVIEW

Wilmington, North Carolina



Wilmington, North Carolina

Wilmington is a dynamic and thriving coastal community situated between the Cape Fear River and Atlantic Ocean in New Hanover County, North Carolina. It is the largest city in southeastern North Carolina and the eighth largest city in the state, as well as the principal city in the Wilmington Metropolitan Statistical Area (MSA).

As the cultural and business center of southeastern North Carolina, Wilmington boasts a charming historic district and lively arts scene. Points of interest include the Cape Fear Museum, the Cameron Arts Museum, Thalian Hall Center for the Performing Arts, Cape Fear Community College's Wilson Center, World War II Memorial Battleship USS North Carolina and the Bellamy Mansion, one of North Carolina's finest examples of historic antebellum architecture. The city plays host to one of the largest domestic television and movie production facilities outside of California and has an inviting business climate, which has attracted major employers such as GE-Hitachi Nuclear Energy, GE Aviation Corning, MegaCorp and Thermo Fisher Scientific. Furthermore, as North Carolina's largest port city, Wilmington serves as the backbone of state international trade.

With a beautiful riverfront, miles of unspoiled beaches and great local seafood restaurants, Wilmington offers the best of a casual, coastal lifestyle. It also boasts the appeal of a small, contemporary city with its global business opportunities and newly revitalized downtown. Top-notch medical facilities, award-winning institutions of higher learning and various entertainment/recreation options also make Wilmington an attractive choice for residents and visitors alike.

Wilmington MSA by The Numbers

Population	467,031
Median Age	46.4
Households	203,962
Average Household Size	2.25
Housing Units	257,560
Average Household Income	\$103,982
Median Household Income	\$75,596
Median Net Worth	\$274,166
Median Disposable Income	\$60,445
Education	40.5% Bachelor's/Grad/Prof Degree 30.2% Some College/Associate's Degree 23.6 High School Degree 5.7% No Diploma
Total Businesses	19,541
Total Employees	191,325
Employment	62.3% White Collar 19.3% Blue Collar 18.3% Services
Unemployment Rate	3.6%

Source:

ESRI forecasts for 2024 and 2029. Census Bureau 2020 decennial Census in 2020 geographies.



AWARDS & ACCOLADES

America's Best Riverfront Town
USA Today

#8 Best City For Tourists
ValuePenguin

#7 Most Fun, Affordable City
Bloomberg Business Week

#1 Best Place To Retire in North Carolina
Expedia.com

#32 On List of Best Places For Business & Careers
Forbes

America's 13 Hottest Up-and-Coming Coffee Cultures
Expedia.com

#25 Best Small Town Honeymoon Destinations in the U.S.
VacationIdea Dream Vacation Magazine

#3 Top Destinations on the Rise
Trip Advisor

#2 Best City to Start A Business in the U.S.
Nerd Wallet

Named to List of Coolest American Towns
Jetsetter Magazine

A Top 10 Small Foodie City
Yelp

#1 Best AI Fresco Dining Neighborhood
USA Today

A 2022 "Top Performing City" in Terms of Economic Growth
Milken Institute

Charming Under-the-Radar Southern Cities Worth Exploring
U.S. News & World Report

#18 City for Cost of Doing Business
Forbes

Best Places To Live for Triathletes
Triathlete Magazine

Top 10 City for Recent Grads
Livability

Among Best Cities for Beer Drinkers
SmartAsset

Azalea Festival Named #5 Best Flower Festival
USA Today

Wrightsville Beach Named to List of South's Best Beaches
Southern Living

Named to List of 20 Coolest Beach Towns in America
MatadorNetwork.com



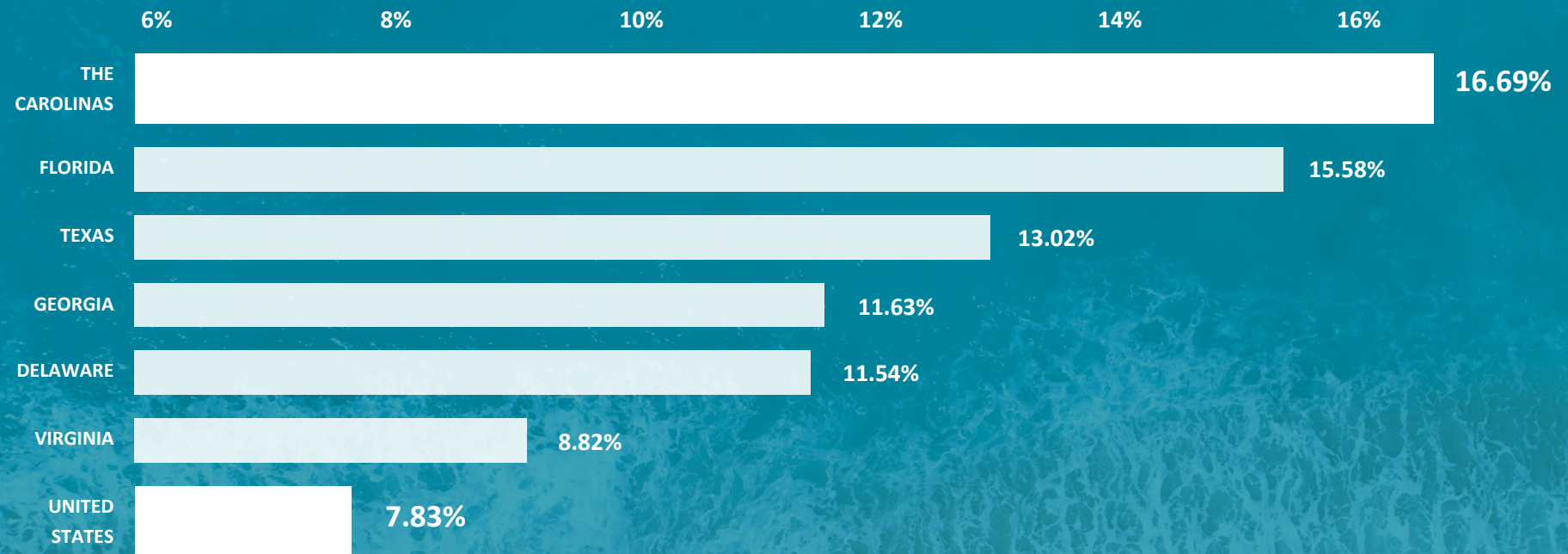
THE COASTAL MIGRATION PHENOMENON

The Southeast is leading the nation in population growth. Coastal cities like Wilmington and Myrtle Beach are at the forefront of the surge.

Wilmington has benefited from disproportionately strong in-migration trends that are taking hold in other Southeastern coastal markets. The area's high-quality standard of living, attractive/moderate climate, favorable business environment, diverse economy, first-class healthcare options and abundant lifestyle amenities are major draws for those contemplating relocation.

Population and in-migration trends are important metrics that portend future apartment demand and rent growth trajectories.

Percent change in population, 2010-2021



NOTE: Population growth includes only coastal counties for above referenced states. United States population growth includes both coastal and inland counties.

Source: National Ocean Economic Program

THE COASTAL MIGRATION PHENOMENON

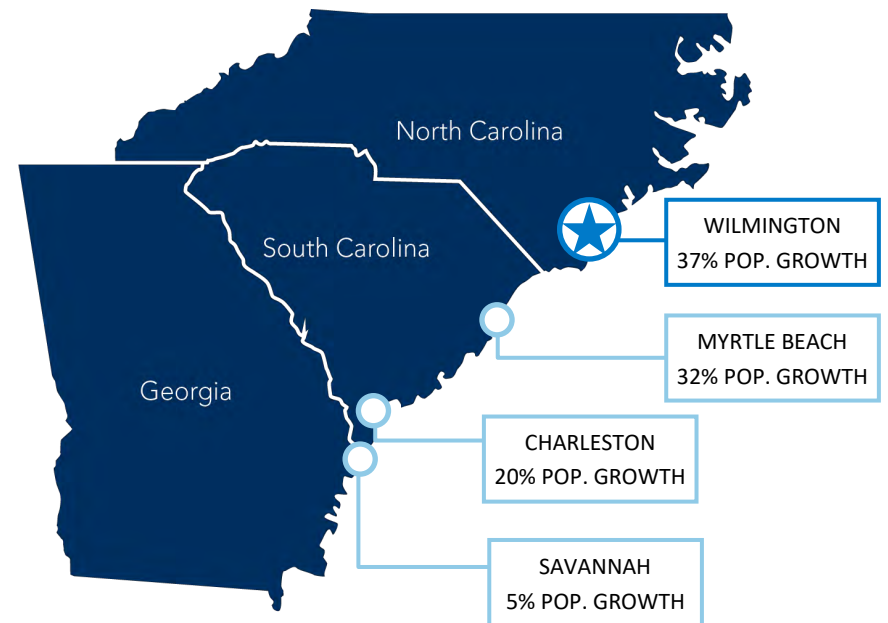
The Southeast is leading the nation in population growth. Coastal cities like Wilmington and Myrtle Beach are at the forefront of the surge.

Wilmington has benefited from disproportionately strong in-migration trends that are taking hold in other Southeastern coastal markets. The area's high-quality standard of living, attractive/moderate climate, favorable business environment, diverse economy, first-class healthcare options and abundant lifestyle amenities are major draws for those contemplating relocation.

Population and in-migration trends are important metrics that portend future apartment demand and rent growth trajectories.

Continued out-sized population growth along Southeastern coastal counties will spur more apartment demand and lead to out-sized rent growth and asset appreciation.

- + 81.3% of the population lives in coastal states on 57% of the nation's land area.
- + 36.9% of the population can be found in counties adjacent to water, and these counties occupy less than 18% of the nation's land.
- + Overall U.S. population growth between 2004 and 2021 was 48.2 million people.
- + 78.1% of the growth occurred in the coastal states and 26.8% in shore-adjacent counties.



Wilmington realized the largest % population increase in the nation post pandemic in 2020.

– United Van Lines 2021

Wilmington continued this trend in 2022 as the #1 MSA in Inbound Migration.

– United Van Lines 2022

Novant Health / NHRMC
is the 9th largest hospital in
NC & has a \$1 billion annual
economic impact



GROWING & DIVERSIFIED ECONOMY

Tremendous population growth over the past few years has stimulated the local economy, which has become increasingly more diversified. The medical, manufacturing, pharmaceutical/biotech, education, tourism and transportation industries are well represented and attract a talented workforce with a strong demographic profile.

MEDICAL



Novant Health / NHRMC

- 7,000 employees / 560 physicians
- 3 campuses
- 855 licensed beds
- 9th largest hospital in NC
- \$1 billion annual economic impact



Wilmington Health

- 870 employees across 22 locations in the greater Wilmington area
- Largest private, multi-specialty group practice in Southeastern NC



Well Care Home Health

- 590 Wilmington-based employees
- Leading home care assistance, rehabilitation and nursing organization

MANUFACTURING



General Electric

- 2,175 employees across GE Aviation and GE Hitachi locations
- GE Hitachi: provider of advanced reactors and nuclear services
- GE Aviation: provider of jet engines and systems for commercial and military aircraft



Corning

- 1,000 total employees
- World's largest optical fiber manufacturing facility



PHARMACEUTICALS / BIOTECH



ThermoFisher Scientific

- 1,700 total employees
- CRO serving pharmaceutical, medical, biotechnology, academic and government



Alcami

- 455 total employees
- Pharmaceutical product contract development and manufacturing





BANKING / FINTECH



Live Oak Bank

- 660 employees
- Headquartered in Midtown submarket of Wilmington



Live Oak Bank

- 660 employees
- Headquartered in Landfall/Mayfaire submarket of Wilmington



Apiture

- 320 employees
- Headquartered in Landfall/Mayfaire submarket of Wilmington

“ The city (Wilmington) has become a FinTech and banking hub over the past few years, sparking the growth of a new class of tech startup founders. ”

– Hypepotamus | Jan 2021

FILM & PRODUCTION

The City of Wilmington has been dubbed “Hollywood East” and “Wilmywood” due to its longstanding ties to the film industry, which have been strengthened in recent years due to financial incentives that have been made available to filmmakers by the State of North Carolina.

Cinespace Wilmington

- One of the largest domestic television and movie production facilities outside of California
- 152,000 SF of production space on 10 column-free sound stages
- The facility has played host to numerous film, television and commercial projects, including: Iron Man 3, We’re the Millers, The Conjuring, Nights in Rodanthe, Dawson’s Creek, One Tree Hill and Eastbound and Down.



TOURISM

Wilmington Tourism

- Provides 6,470 jobs
- Supports a payroll of ~\$150M
- New Hanover ranked 7th among all NC counties in visitor spending in 2021
- In 2022, visitors to New Hanover County spent 41.23% more than in 2020



EDUCATION



UNC Wilmington

- 18,030 undergraduate/graduate students
- 2,540 total faculty/admin staff
- Offers 58 bachelor degree programs and 37 graduate programs – including a Ph.D. in marine biology – one of only three such programs offered on the Atlantic Coast



New Hanover County Public Schools

- Primary public school system
- 4,443 total employees / 26, 131 students



Cape Fear Community College

- NC's 5th largest community college
- 18,030 students employees
- 2,540 faculty/admin staff
- Offers over 60 technical degree programs of study, as well as two-year college transfer degrees and a wide variety of adult education and continuing education classes New Hanover County Schools for lifelong learning



TRANSPORTATION



Port of Wilmington

- Busiest port in North Carolina
- Strategically located on the East Coast within 700 miles of more than 70% of the U.S. industrial base
- Operated by the North Carolina State Ports Authority
- Offers terminal facilities serving container, bulk breakbulk and ro-ro cargo operations
- Features a deep 42-foot navigational channel, nine berths with 6,768 feet of wharf frontage, four post-Panamax container cranes and three neo-Panamax container cranes.



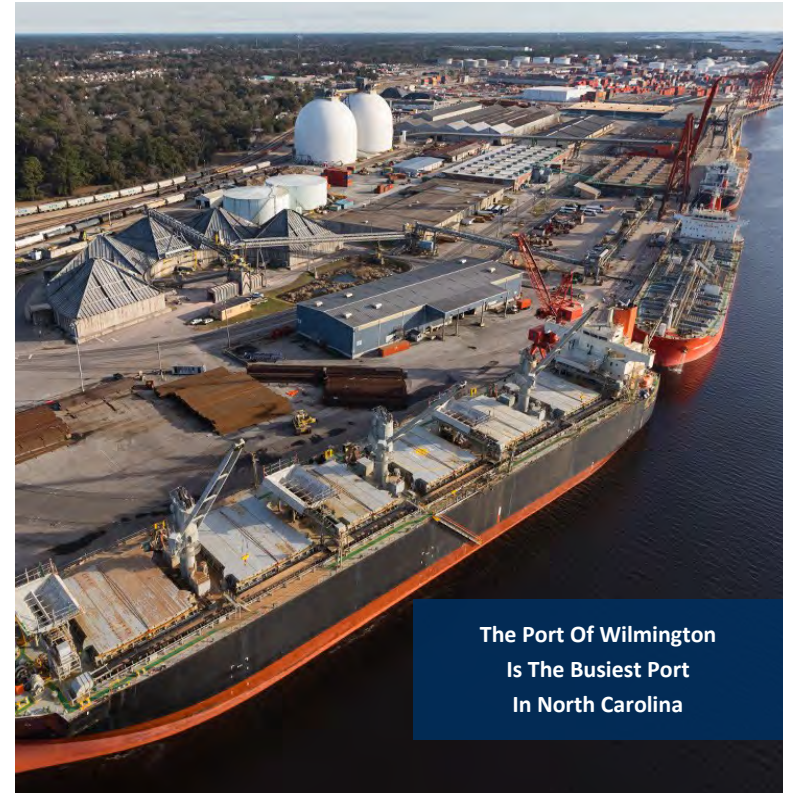
MegaCorp

- Premier logistics firm headquartered in the Landfall/ Mayfaire submarket of Wilmington
- 375 current employees
- Committed to 300 additional hires over next 5 years



ILM Airport

- 5th largest airport in NC
- 16,385 jobs
- \$2.25 billion economic impact annually
- \$68M terminal expansion opened in '22, increasing passenger capacity 50%
- Record high of 106,167 passengers in Aug'22



The Port Of Wilmington
Is The Busiest Port
In North Carolina



ILM Airport
5th Largest Airport In NC



102 Autumn Hall Drive | Suite 210 | Wilmington, NC 28403

p. 910.344.1000 f. 910.344.1020

capefearcommercial.com

© 2023 Cape Fear Commercial, LLC. All rights reserved. The information contained in the following Marketing Brochure is proprietary and strictly confidential. It is intended to be reviewed only by the party receiving it from Cape Fear Commercial and should not be made available to any other person or entity without the written consent of Cape Fear Commercial. This Marketing Brochure has been prepared to provide summary, unverified information to prospective purchasers, and to establish only a preliminary level of interest in the Subject property. The information contained herein is not a substitute for a thorough due diligence investigation. Cape Fear Commercial has not made any investigation, and makes no warranty or representation, with respect to the income or expenses for the Subject property, the future projected financial performance of the property, the size and square footage of the property and improvements, the presence or absence of contaminate substances, PCB's or asbestos, the compliance with State and Federal regulations, the physical condition of the improvements thereon, or the financial condition or the business prospects of any tenant's plans or intentions to continue its occupancy of the Subject property. The information contained in this Marketing Brochure has been obtained from sources we believe to be reliable; however, Cape Fear Commercial has not verified, and will not verify, any of the information contained herein, nor has Cape Fear Commercial conducted any investigation regarding these matters and makes no warranty or representation whatsoever regarding the accuracy or completeness of the Information provided. All potential buyers must take appropriate measures to verify all of the information set forth herein.