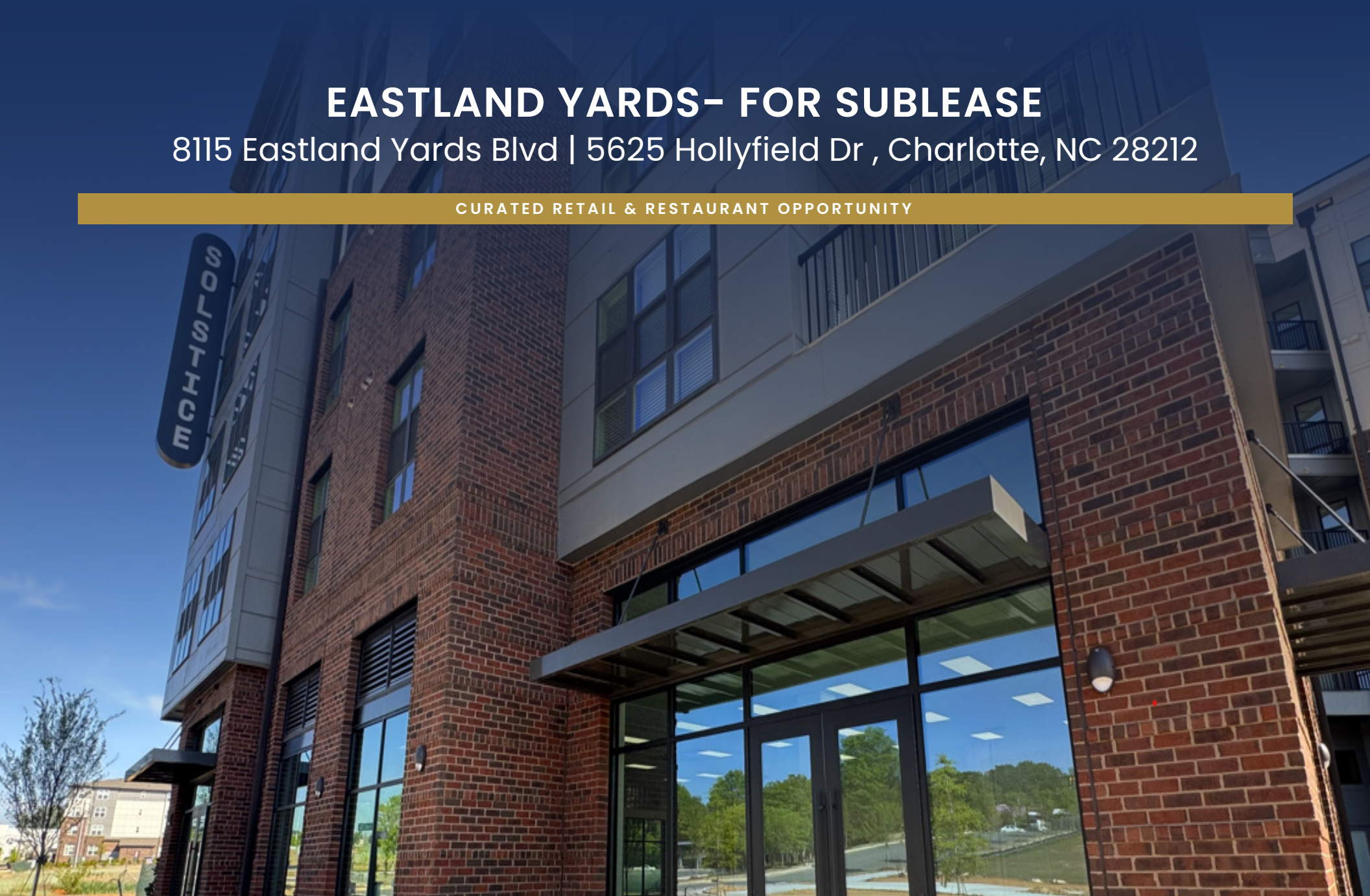


EASTLAND YARDS- FOR SUBLEASE

8115 Eastland Yards Blvd | 5625 Hollyfield Dr , Charlotte, NC 28212

CURATED RETAIL & RESTAURANT OPPORTUNITY



ELENA JI

Senior Associate
704.317.1944
elena@firstearlypartners.com

ANDRE COLLINS, SIOR, CCIM

Founding Partner
704.317.1946
andre@firstearlypartners.com

FIRST & EARLY
— PARTNERS —
COMMERCIAL REAL ESTATE ADVISORS

PROPERTY OVERVIEW



PROPERTY DESCRIPTION

Position your concept at the heart of East Charlotte's most anticipated mixed-use redevelopment. Eastland Yards offers newly delivered, first-generation retail and restaurant space designed to serve a vibrant and growing community. Delivered in warm vanilla shell condition, the available suites provide maximum flexibility for buildout, allowing tenants to create a tailored customer experience. The project is intentionally curated to attract dynamic retail and culinary operators that reflect the diversity and culture of the surrounding neighborhood. Available spaces include: ±4,164 RSF (divisible) – 8115 Eastland Yards Blvd and ±3,796 RSF – 5625 Hollyfield Drive

OFFERING SUMMARY

Lease Rate:	Contact Broker
Lease Type:	Triple Net- NNN+(TICAM)
Number of Units:	2
Available SF:	±3,776 - 4,164 SF
Condition:	First Generation Warm Vanilla Shell
Grease Interceptor:	1,000 Gallon Installed
Delivery:	Available Now

ELENA JI

Senior Associate
704.317.1944
elena@firstearlypartners.com

ANDRE COLLINS, SIOR, CCIM

Founding Partner
704.317.1946
andre@firstearlypartners.com

PROPERTY HIGHLIGHTS

Building Name	Eastland Yards
Use:	Retail / Restaurant
Signage:	Building Façade & Canopy Signage Available
Ceiling height	14'–16'+ clear heights across available suites
Parking:	Surface & Structured Parking Available
Year Built	2025

Strategically located in East Charlotte, the property benefits from strong connectivity to Central Avenue and surrounding residential neighborhoods, providing consistent local traffic and a built-in customer base. Surrounded by a diverse and growing population, the area continues to see public and private investment, positioning Eastland Yards as a key destination for culturally relevant retail and culinary experiences.



- Two distinct retail opportunities: End-cap configurations
- Suite 101 | featuring wrap-around frontage and maximum exposure
- Suite 121 | offering expansive storefront frontage (50'+) for strong brand visibility
- First-generation warm vanilla shell, allowing full customization
- Flexible layouts with subdivision potential to accommodate a range of users
- Potential outdoor patio seating enhancing customer experience
- Strong connectivity to surrounding residential neighborhoods
- Built-in customer base supported by a growing and diverse population

ELENA JI

Senior Associate
704.317.1944
elena@firstearlypartners.com

ANDRE COLLINS, SIOR, CCIM

Founding Partner
704.317.1946
andre@firstearlypartners.com

AVAILABLE SPACES

LEASE INFORMATION

Location:	End-Cap	Lease Term:	Negotiable
Total Space:	3,776 - 4,164 SF	Lease Rate:	Contact Broker

AVAILABLE SPACES

SUITE	TENANT	SIZE (SF)	DESCRIPTION
8115 Eastland Yards Blvd, Suite 101	Available	4,164 SF	Standalone feel with long continuous frontage Prominent end-cap retail space with multi-directional exposure Expansive storefront with wrap-around visibility High-impact signage opportunities along Eastland Yards Blvd Ideal for flagship retail, restaurant, or experiential concepts
5625 Hollyfield Drive, Suite 121	Available	3,776 SF	Strong linear frontage (50'+) ideal for branding and display Efficient layout with excellent storefront visibility Façade and canopy signage available Well-suited for retail, service, or dining users

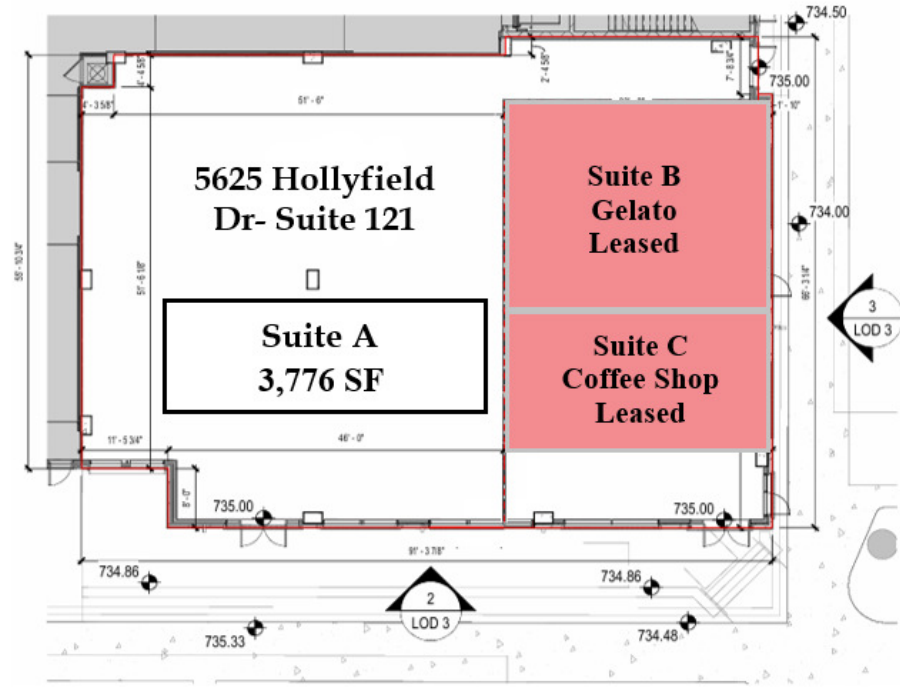
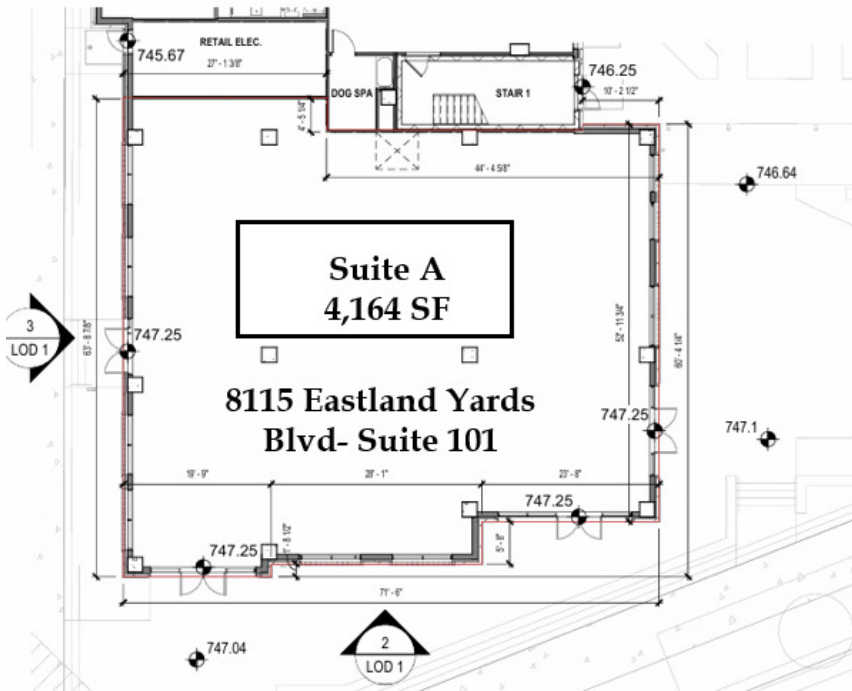
ELENA JI

Senior Associate
704.317.1944
elena@firstearlypartners.com

ANDRE COLLINS, SIOR, CCIM

Founding Partner
704.317.1946
andre@firstearlypartners.com

FLOOR PLANS



ELENA JI
Senior Associate
704.317.1944
elena@firstearlypartners.com

ANDRE COLLINS, SIOR, CCIM
Founding Partner
704.317.1946
andre@firstearlypartners.com

8115 EASTLAND YARDS BOULEVARD, CHARLOTTE, NC 28212

ADDITIONAL PHOTOS



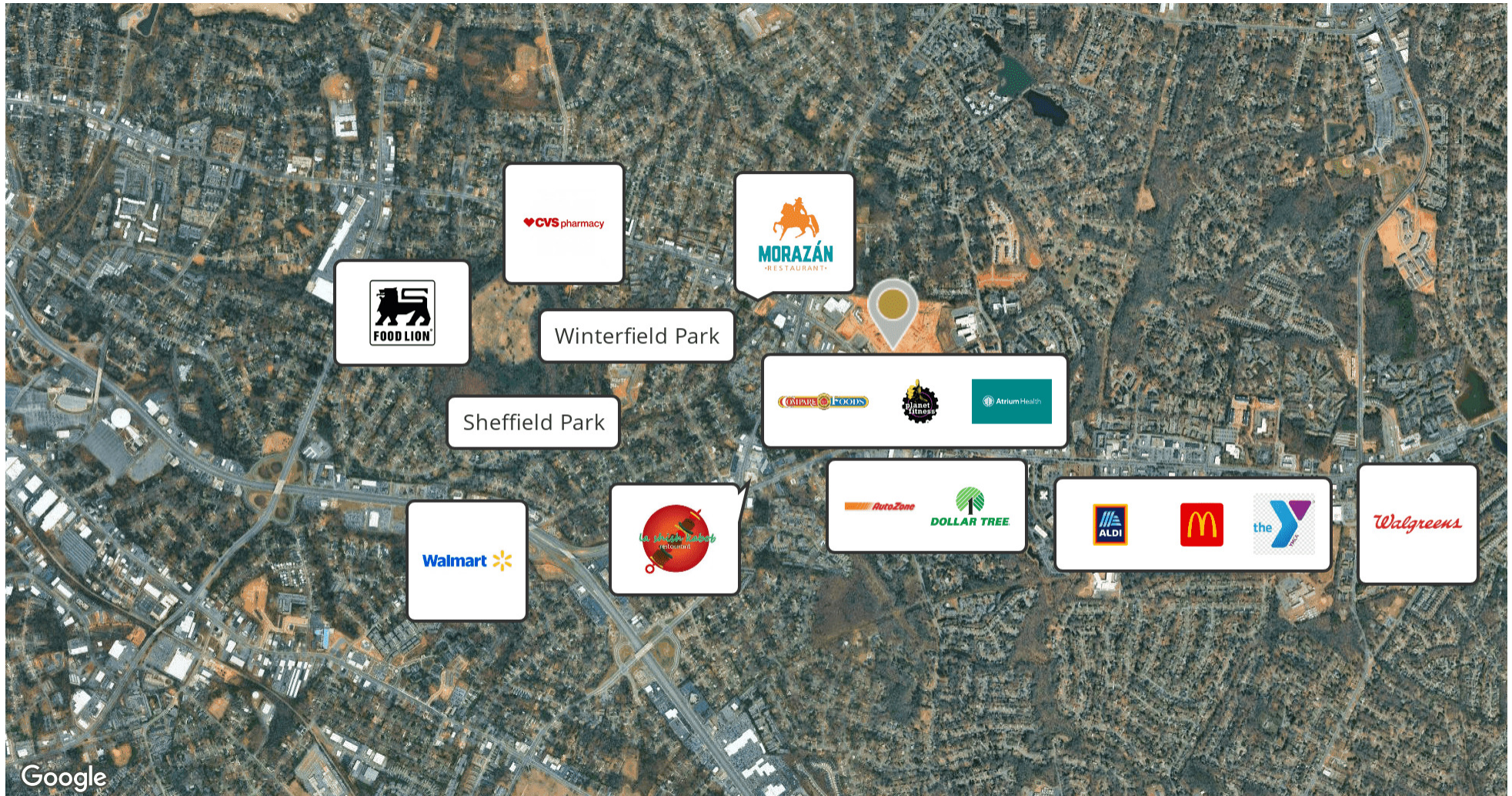
ELENA JI

Senior Associate
704.317.1944
elena@firstearlypartners.com

ANDRE COLLINS, SIOR, CCIM

Founding Partner
704.317.1946
andre@firstearlypartners.com

RETAILER MAP



ELENA JI
Senior Associate
704.317.1944
elena@firstearlypartners.com

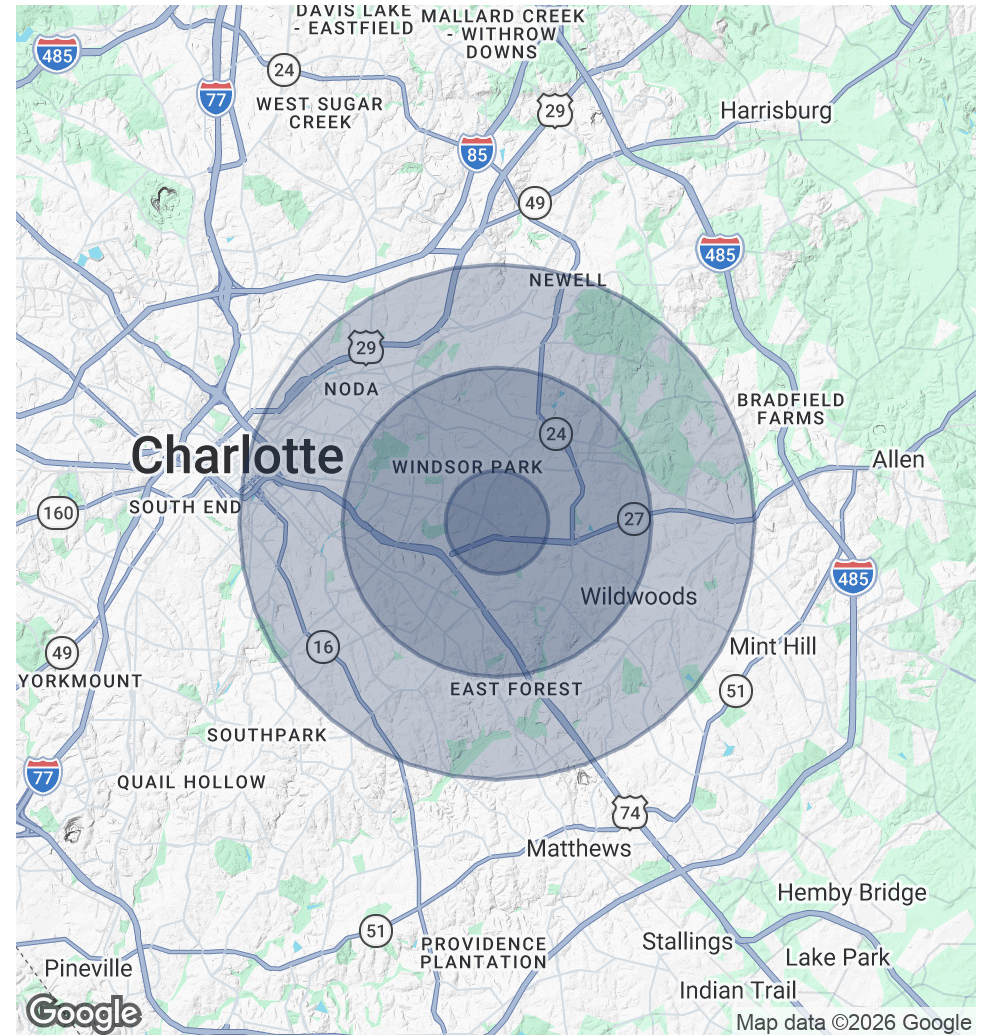
ANDRE COLLINS, SIOR, CCIM
Founding Partner
704.317.1946
andre@firstearlypartners.com

DEMOGRAPHICS

POPULATION	1 MILE	3 MILES	5 MILES
Total Population	17,432	119,386	267,368
Average Age	31.6	33.7	35.1
Average Age (Male)	27.7	33.0	34.2
Average Age (Female)	34.2	34.6	35.9

HOUSEHOLDS & INCOME	1 MILE	3 MILES	5 MILES
Total Households	6,187	45,970	106,468
# of Persons per HH	2.8	2.6	2.5
Average HH Income	\$67,334	\$80,453	\$113,462
Average House Value	\$265,203	\$321,782	\$469,982

2023 American Community Survey (ACS)



ELENA JI
 Senior Associate
 704.317.1944
elena@firstearlypartners.com

ANDRE COLLINS, SIOR, CCIM
 Founding Partner
 704.317.1944
andre@firstearlypartners.com

CURATED TENANT VISION



Eastland Yards is thoughtfully designed to attract a curated mix of retail and culinary operators that enhance and reflect the surrounding community. The redevelopment features a pedestrian-friendly environment with activated storefronts and outdoor engagement, positioning Eastland Yards as a premier destination for retail and dining.

WE ARE SEEKING:

Established local and regional restaurant operators

Chef-driven and culturally relevant dining concepts

Boutique retail and service-oriented brands

Operators with a strong identity and proven track record

ELENA JI

Senior Associate
704.317.1944
elena@firstearlypartners.com

ANDRE COLLINS, SIOR, CCIM

Founding Partner
704.317.1946
andre@firstearlypartners.com

DISCLOSURE AND DISCLAIMER

DISCLOSURE:

1. ACCURACY OF INFORMATION:

While every effort has been made to ensure the accuracy of the information provided in this brochure/flyer, including but not limited to property details, specifications, and/or financial projections, we do not guarantee its completeness or accuracy. Prospective buyers/tenants are advised to conduct their own due diligence and verify all information independently.

2. AVAILABILITY AND PRICING:

The availability of the property and the pricing information contained herein are subject to change without notice. We do not guarantee the availability of the property or the accuracy of the pricing information provided in this brochure/flyer.

3. THIRD-PARTY INFORMATION:

Certain information contained in this brochure/flyer may have been obtained from third-party sources, including but not limited to property owners, landlords, tenants, and public records. We make no representations or warranties regarding the accuracy or reliability of such third-party information.

4. LEGAL AND FINANCIAL ADVICE:

This brochure/flyer is for informational purposes only and does not constitute legal, financial, or investment advice. Prospective buyers/tenants are strongly encouraged to consult with their own legal, financial, and real estate advisors before entering into any lease agreement or making any investment decisions.

DISCLAIMER:

1. NO WARRANTY:

All information provided in this brochure/flyer is provided "as is" without any warranty of any kind, either express or implied, including but not limited to warranties of merchantability, fitness for a particular purpose, or noninfringement.

2. LIMITATION OF LIABILITY:

In no event shall we be liable for any direct, indirect, incidental, special, exemplary, or consequential damages (including but not limited to lost profits, business interruption, or loss of data) arising out of or in connection with the use or inability to use the information provided in this brochure/flyer, even if we have been advised of the possibility of such damages.

3. THIRD-PARTY LINKS:

This brochure/flyer may contain links to third-party websites or resources. We are not responsible for the availability, content, or accuracy of such third-party sites or resources and do not endorse any products, services, or opinions expressed therein.

4. JURISDICTION:

This disclosure and disclaimer shall be governed by and construed in accordance with the laws of North Carolina, without regard to its conflict of law principles.

ELENA JI

Senior Associate
704.317.1944
elena@firstearlypartners.com

ANDRE COLLINS, SIOR, CCIM

Founding Partner
704.317.1946
andre@firstearlypartners.com